

179 - 181 HIGH STREET, HAMPTON HILL

ACOUSTIC DESIGN STATEMENT

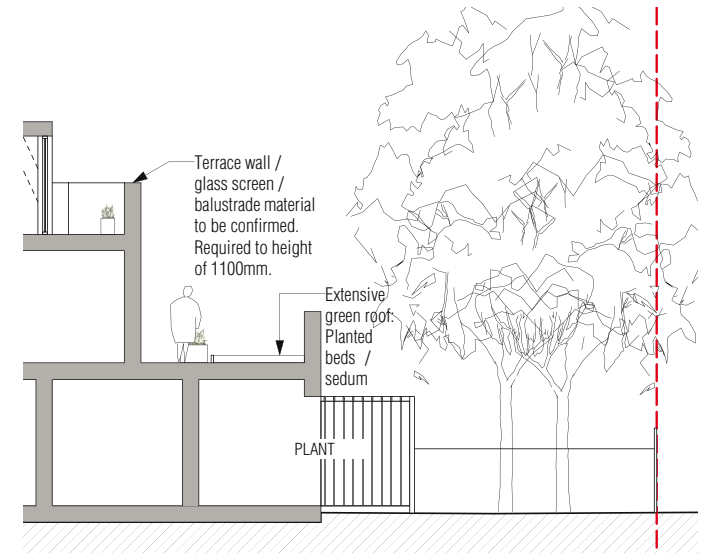
METHODS TO HELP MINIMISE ACOUSTIC IMPACT

The plant space has been designed to sit partially internally and partially externally in order for the equipment housed to have access to free air flow. The external space to the rear of the proposed retail space will be accessible from inside the retail store, with external access for maintenance

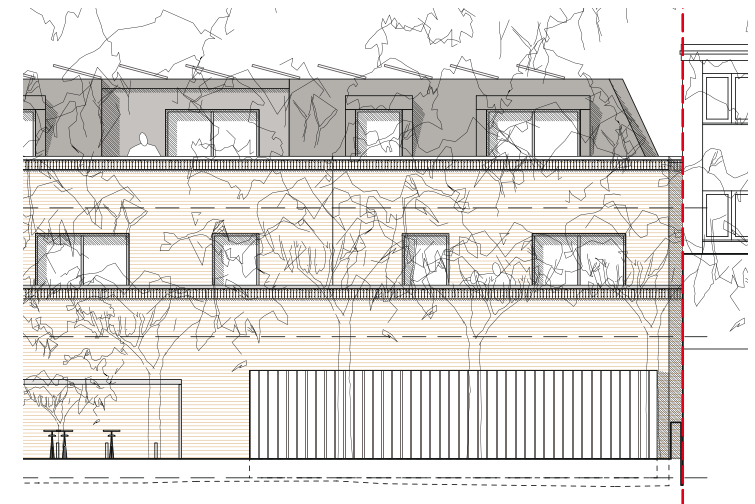
The specification of the plant equipment is yet to be fixed and will be decided as part of the detailed design phase. It is appreciated that the noise design requirements would be conditioned as part of a planning approval. The scheme will comply with the measures set within this condition, including commissioning an acoustic test and report to ensure the condition has been met.

The design and location of the plant space has been designed to minimise disruption to both the existing neighbouring and proposed new residential properties. The nearest residential property is set back 6m from the proposed plant area and the terrace balustrade will further reduce any visual and acoustic impact.

An acoustic louvre screen has been proposed to protect the plant space from the communal garden area. This screen provides an acoustic and visual barrier. The acoustic louvers are used to reduce any mechanical equipment noise from the proposed plant space while not inhibiting the passage of fresh air flow.



Section through proposed plant area



Elevation of plant area

EXAMPLES OF ACOUSTIC LOUVERS

