

**NOTES**

To be read in conjunction with the following drawing series:  
 010,020,030,110,120,200,300,800.

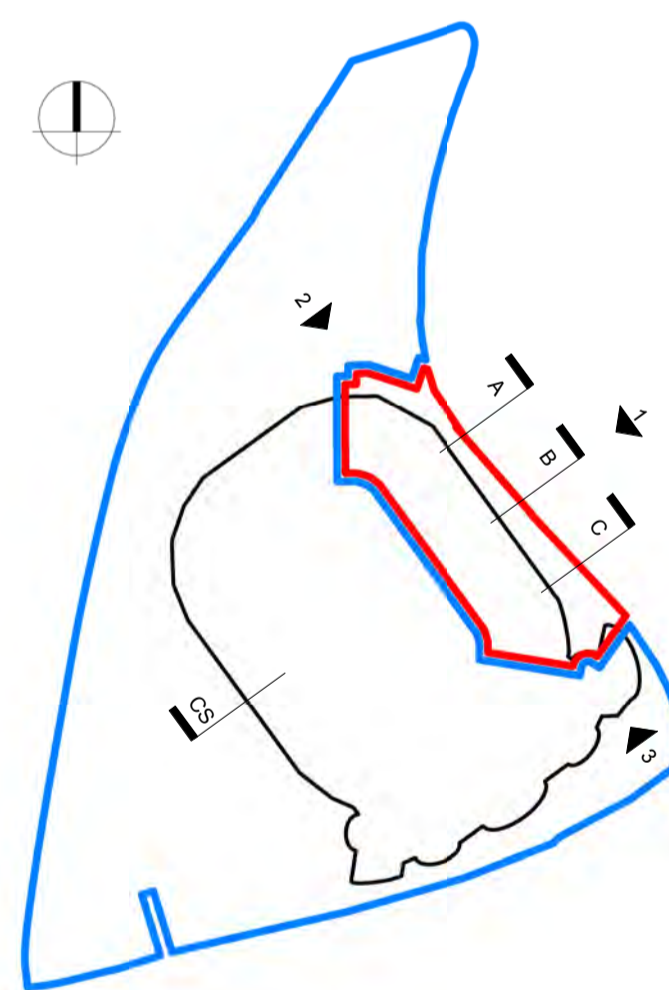
**KEY**

- Existing fence & turnstile line
  - Tarmac
  - Existing concrete block paving (see image 1 drawing 006)
  - Proposed concrete block paving to match existing at south stand
  - Proposed small concrete block paving (similar to south stand, see image 2 drawing 006)
  - Resin bonded aggregate with integrated uplights (similar to south stand, see image 3 drawing 006)
- NOTE: PLEASE REFER TO DRAWING 007 FOR LANDSCAPE SECTIONS

**KEY**

- Development Boundary
- Site Ownership Boundary
- Area out of scope

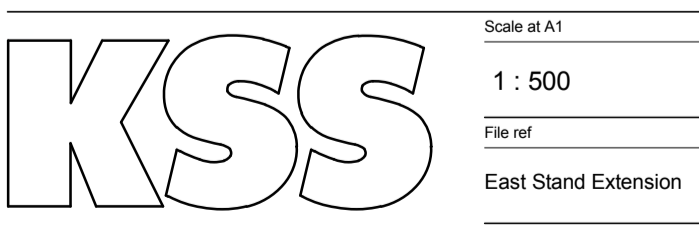
**KEY PLAN**



**PLANNING**

Client  
 RFU  
 Project  
**TWICKENHAM STADIUM  
 EAST STAND EXTENSION**

Drawing title  
**PROPOSED EXTERNAL LANDSCAPING  
 L01 PLAN**



Scale at A1  
**1 : 500**  
 File ref  
 East Stand Extension  
 Drawn by Date drawn  
 ML 10.06.16  
 Checked by Date checked  
 PY 10.06.16

Project number Drawing number Revision  
**15735 006 P01**

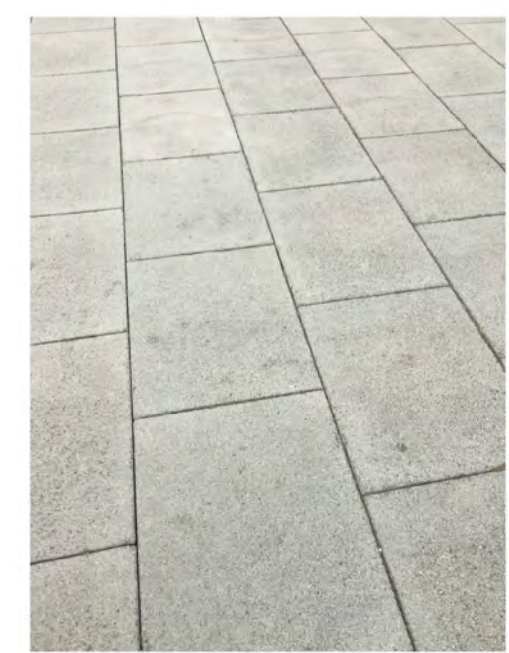


IMAGE 1 - EXISTING CONCRETE BLOCK PAVING AT SOUTH STAND

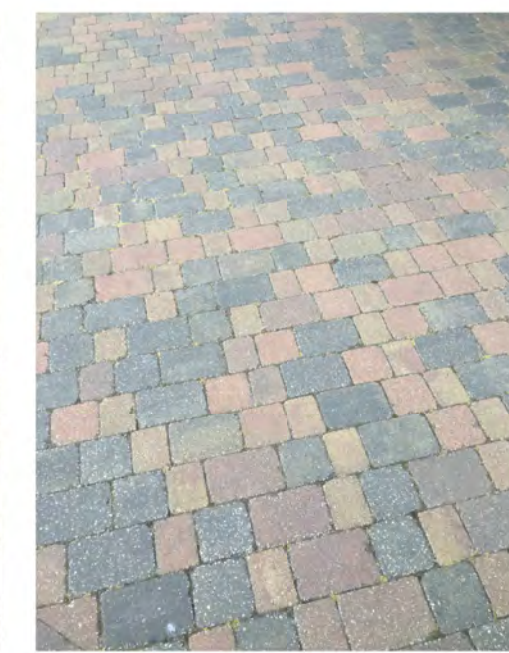


IMAGE 2 - EXISTING SMALL CONCRETE BLOCK PAVING AT SOUTH STAND

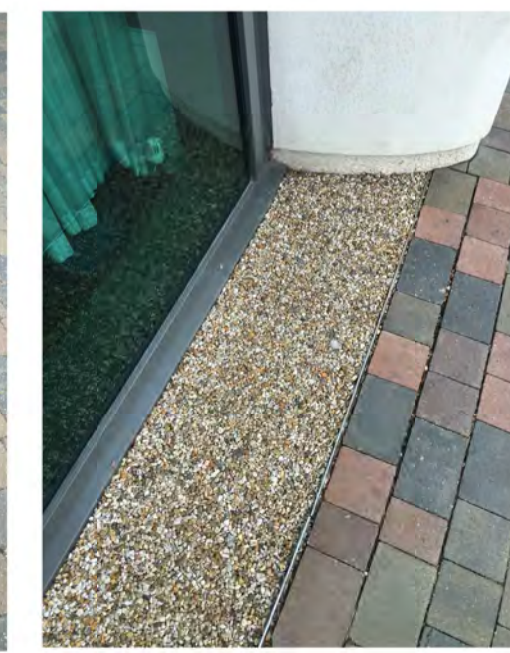


IMAGE 3 - EXISTING RESIN BONDED AGGREGATE AT SOUTH STAND

