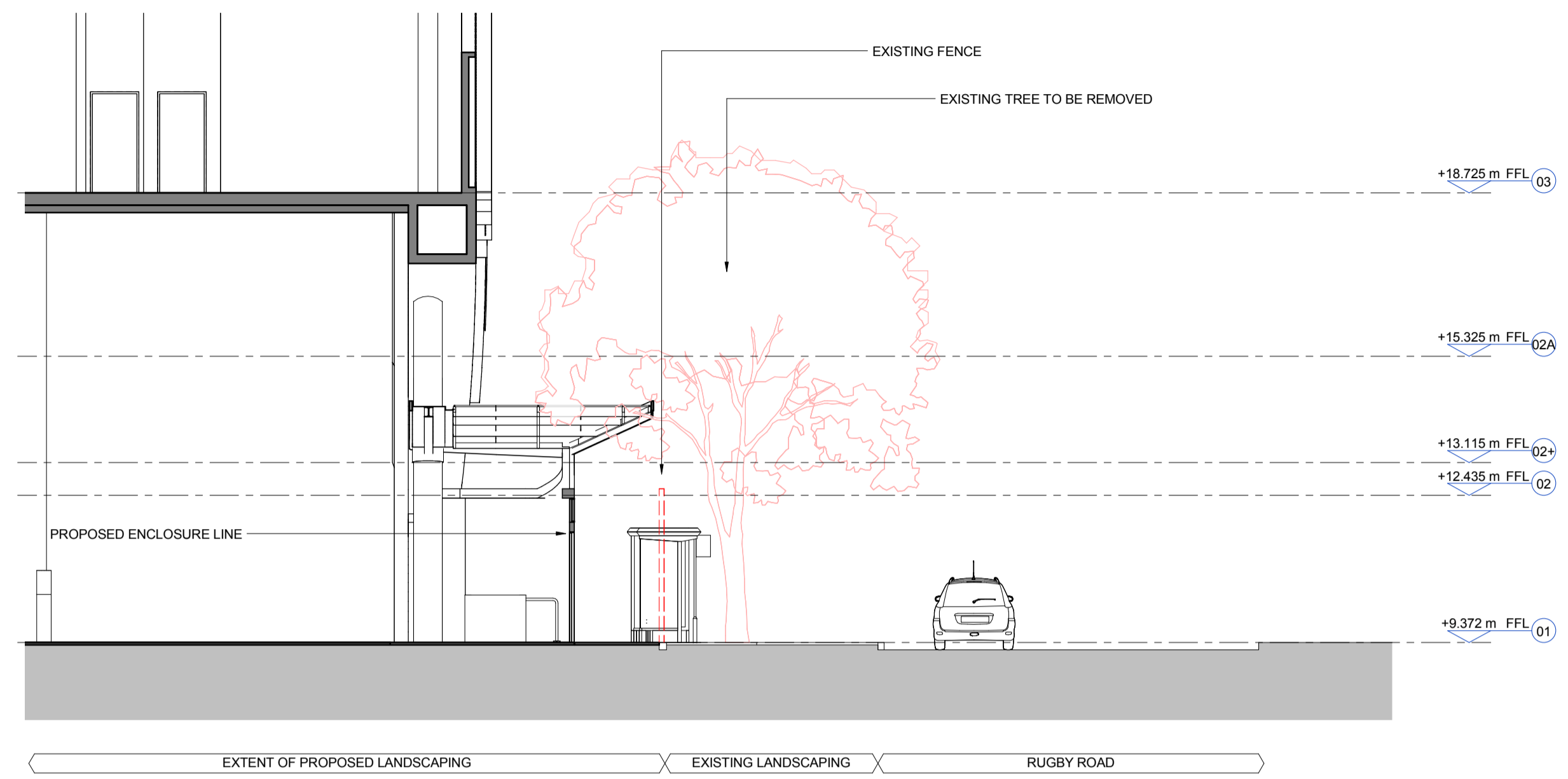
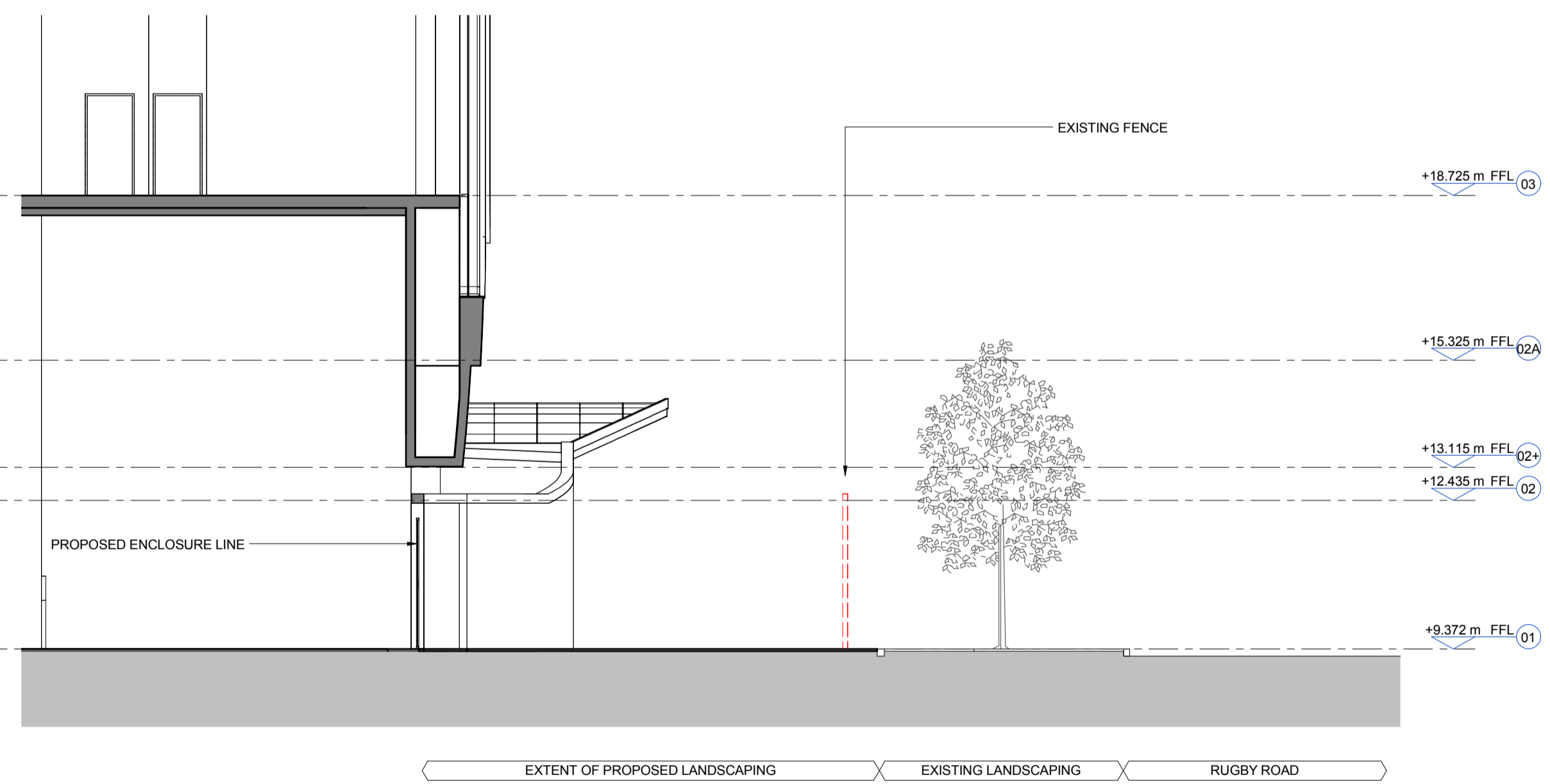


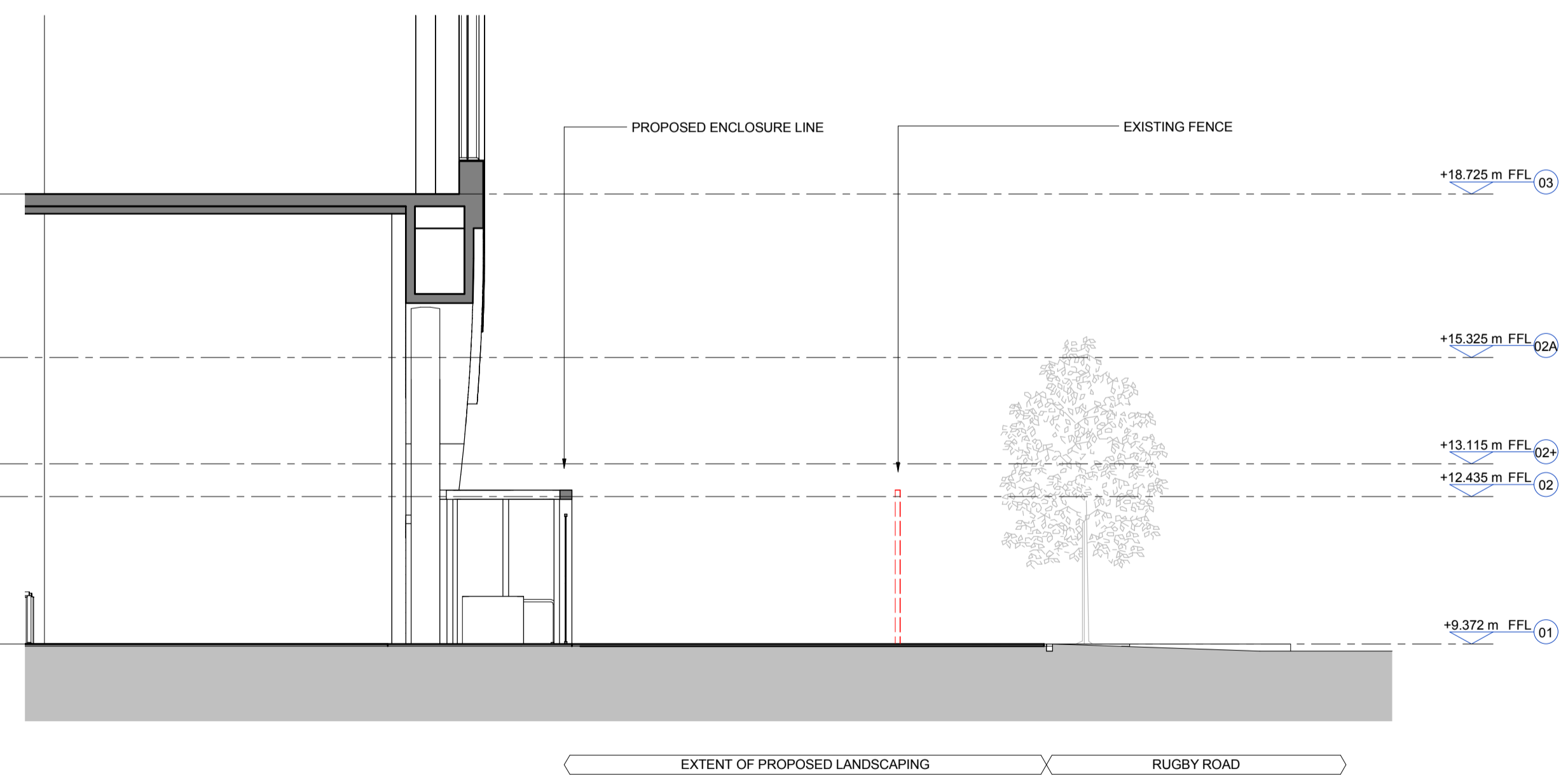
1 SECTION
 LANDSCAPE SECTION 1 1: 100



2 SECTION
 LANDSCAPE SECTION 2 1: 100



3 SECTION
 LANDSCAPE SECTION 3 1: 100

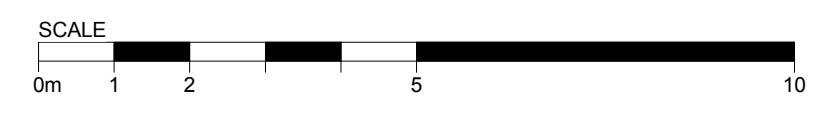


4 SECTION
 LANDSCAPE SECTION 4 1: 100

NOTES
 To be read in conjunction with the following drawing series:
 010.020.030.110, 120, 200, 300, 800.

PLANNING
 Client
 RFU
 Project
 TWICKENHAM STADIUM
 EAST STAND EXTENSION
 Drawing title
 PROPOSED LANDSCAPING SECTIONS

KSS Scale at A1
 1 : 100
 File ref
 East Stand Extension
 Drawn by Date drawn
 London 1 James Street London W1U 1DR T+44(0)20 7907 2222 F+44(0)20 7907 2299
 Sevenoaks 7 Blighs Walk Sevenoaks TN13 1DB T+44(0)20 7907 2222 F+44(0)1732 467 841
 ML 10.06.16
 Checked by Date checked
 PY 10.06.16



Project number	Drawing number	Revision
15735	007	P01