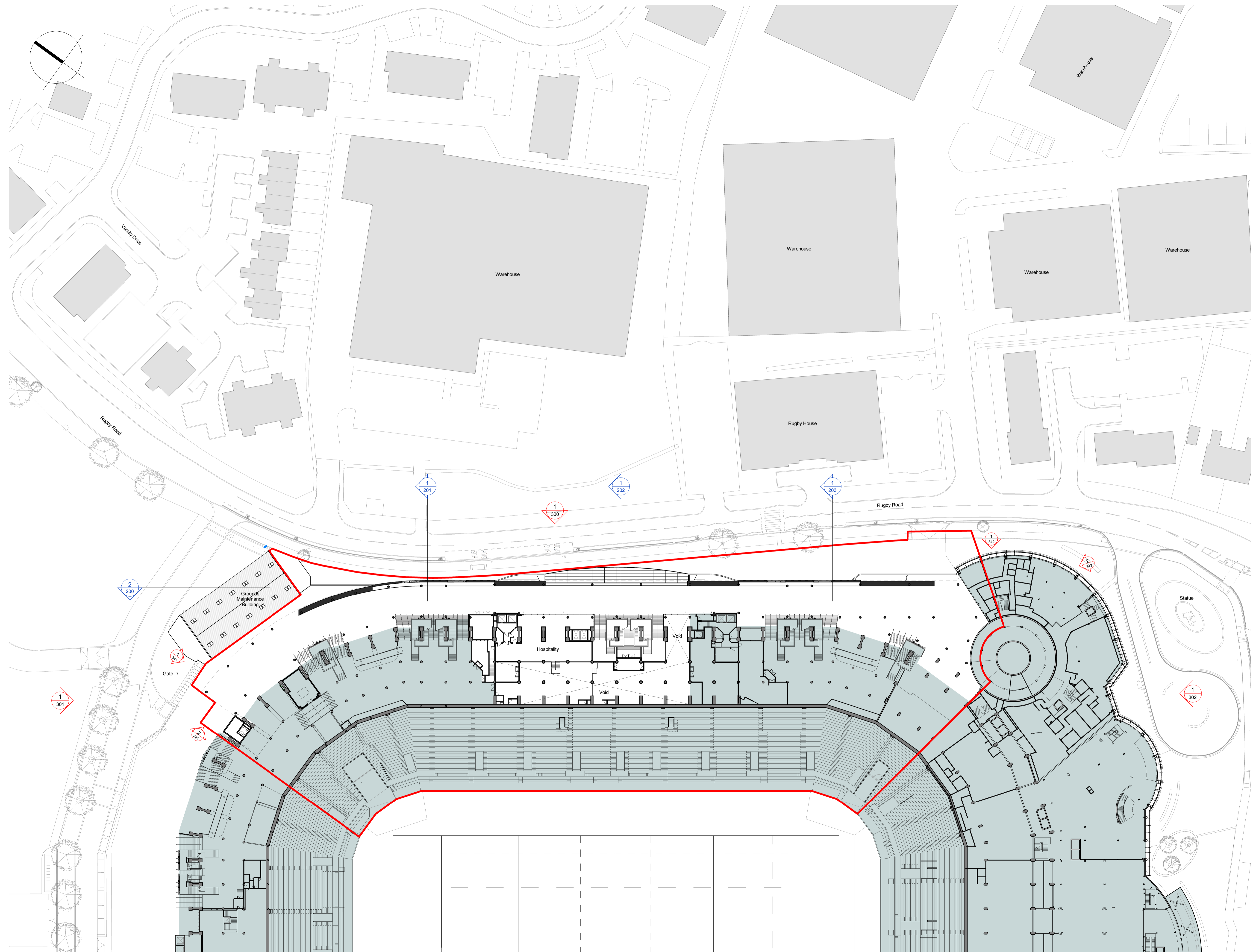


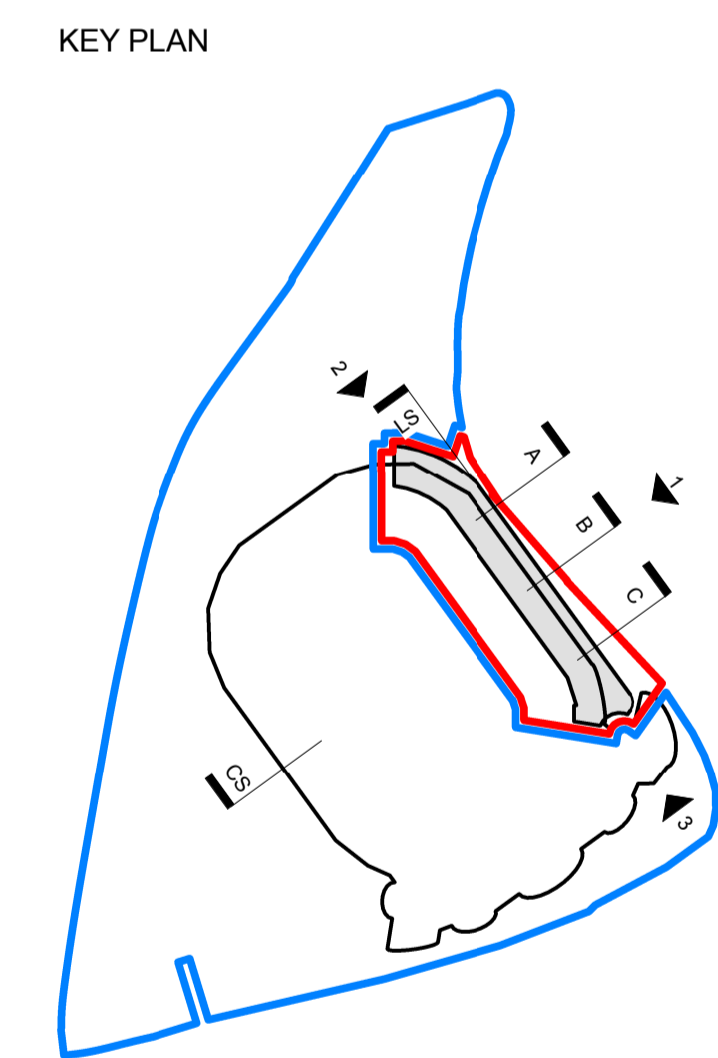
Revisions	PLANNING ISSUE	AE	PY
P01 28.06.16	PLANNING ISSUE	AE	PY
P02 14.07.16	REVISED PLANNING ISSUE	KI	PY



**NOTES**  
 This is an indicative plan for context purposes only.  
 To be read in conjunction with the following drawing series:  
 001,010,020,030,110,200,300,800.  
 All colours denote hospitality and support areas as note on the drawings.

**KEY**

- Development Boundary
- Site Ownership Boundary
- Area out of scope (The areas marked grey are those parts of the stadium, at this level, where no physical works are proposed).



**PLANNING**

Client  
 RFU

Project  
 TWICKENHAM STADIUM  
 EAST STAND EXTENSION

Drawing title  
 LEVEL 2A CONTEXT PLAN  
 PLANNING

**KSS** Scale at A1  
 1 : 500

File ref  
 East Stand Extension

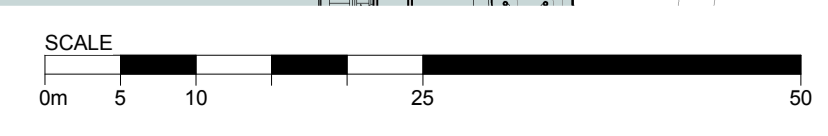
Drawn by  
 Date drawn

Checked by  
 Date checked

London  
 1 James Street  
 London W1U 1DR  
 T+44(0)20 7907 2222  
 F+44(0)20 7907 2299

Sevenoaks  
 7 Blighs Walk  
 Sevenoaks TN13 1DB  
 T+44(0)20 7907 2222  
 F+44(0)1732 467 841

NK 10.06.16  
 PY 14.07.16



Project number	Drawing number	Revision
15735	122	P02