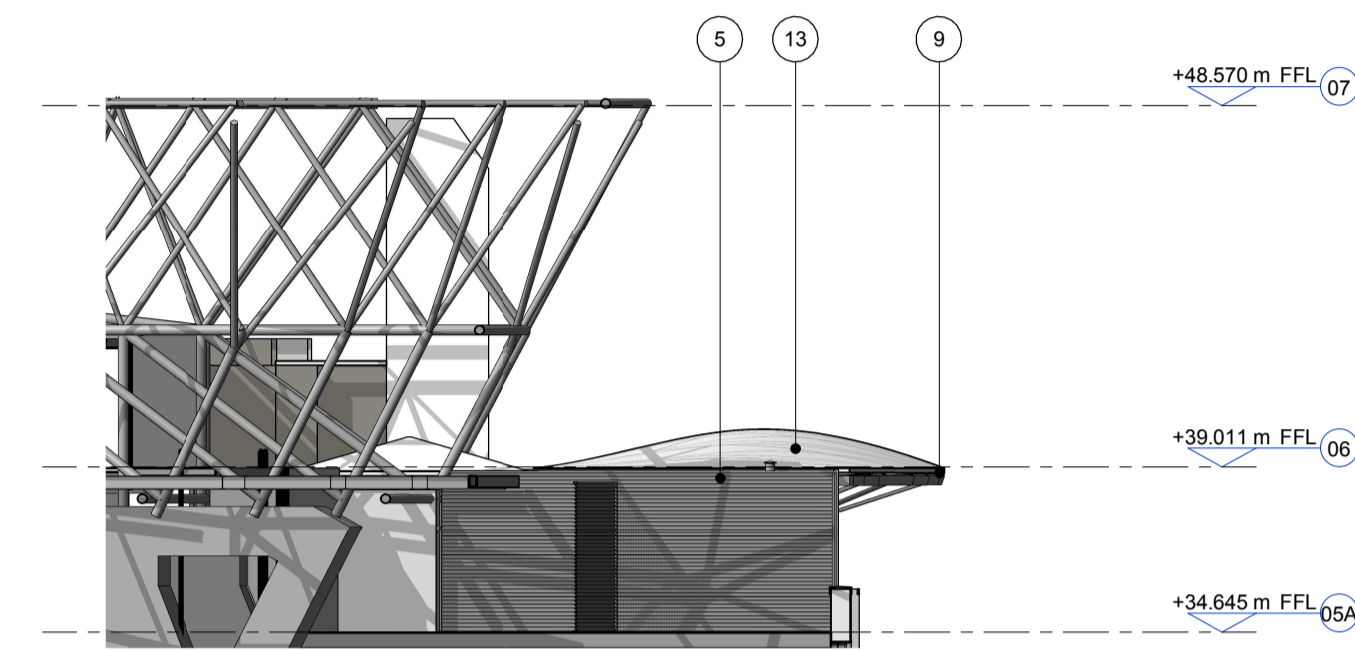
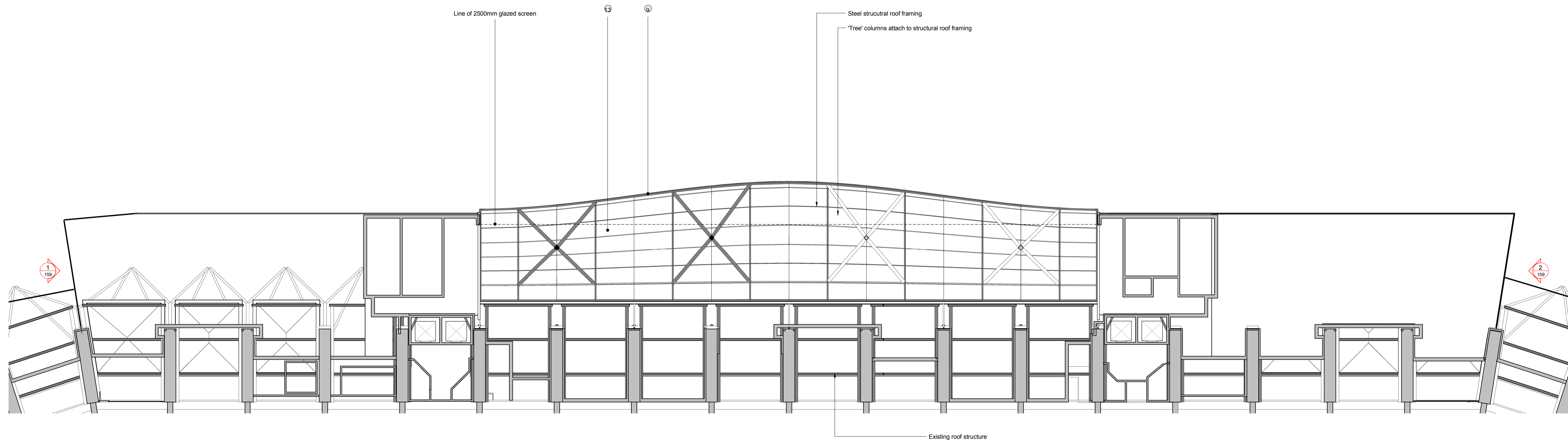


1 ELEVATION
 LEVEL 5A NORTH ELEVATION 1:200



2 ELEVATION
 LEVEL 5A SOUTH ELEVATION 1:200



3 PLAN
 LEVEL 5A REFLECTED CEILING PLAN 1:200

- 1 ALUMINIUM SHINGLE RAINSCREEN CLADDING
- 2 DOUBLED GLAZED CURTAIN WALL SYSTEM WITH SOLAR CONTROL AND TINTED GLASS - COLOUR LIGHT GREEN
- 3 GLAZED BACK PAINTED SPANDREL PANEL INFILLS TO CURTAIN WALLING
- 4 PORCELAIN RAINSCREEN CLADDING
- 5 PPC LOUVRES DARK GREY
- 6 SILICONE JOINTS TO MULLIONS AND TRANSOMS
- 7 PPC ALUMINIUM FINIS TO CURTAIN WALL MULLIONS COLOUR TO MATCH CURTAIN WALL FRAME
- 8 PORCELAIN SOLID PANELS WITH EXPRESSED HORIZONTAL PATTERN AND PORCELAIN TOP PANEL WITH SLOTTED HOLES TO ALLOW THE MECHANICAL VENTILATION
- 9 PRESSED ALUMINIUM ROOF EDGE PROFILE (WHITE COLOUR)
- 10 PRESSED METAL VERTICAL FINIS (WHITE COLOUR)
- 11 PPC METAL FLASHING TO THE TOP OF THE TURNSTILES AND GATES FASCIA EDGE
- 12 LAMINATED GLAZED SCREEN TO 2.5M ABOVE FFL WITH GALVANIZED VERTICALS
- 13 STANDING SEAM ROOF
- 14 PPC MONORAIL SYSTEM TO PERIMETER EDGE FOR CLEANING AND MAINTENANCE VIA ABSAILING
- 15 GLAZED DOOR FOR SERVICE ACCESS
- 16 STAINLESS STEEL CABLES GUARDING
- 17 PORCELAIN TILES WITH EXPRESSED HORIZONTAL PATTERN
- 18 STANDING SEAM CANOPY WITH ALUMINIUM SOFFIT PANELS
- 19 WHITE PAINTED CIRCULAR HOLLOW SECTION STEEL PERIMETER COLUMNS
- 20 PRESSED METAL FLASHING DETAIL TO ROOF PARAPET - COLOUR TO MATCH LOUVRES
- 21 PRESSED METAL FLASHING DETAIL TO WINDOWS REVEALS COLOUR TO MATCH CURTAIN WALL FRAMING
- 22 EXIT GATES WITH GALVANISED AND POWDER COATED DOUBLE MESH INFILL PANELS
- 23 HPL RAINSCREEN CLADDING
- 24 WAYFINDING TO TURNSTILES AND GATES
- 25 GALVANISED AND POWDER COATED DOUBLE MESH SECURITY FENCING WITH VERTICAL POST
- 26 FIBRE CEMENT BOARD

NOTES
 To be read in conjunction with the following drawing series:
 010,020,030,110,120,200,300,800.

PLANNING
 Client _____
 RFU _____
 Project _____
**TWICKENHAM STADIUM
 EAST STAND EXTENSION**
 Drawing title _____
LEVEL 5A TERRACE UNDERSIDE RCP

KSS Scale at A1
 As indicated
 File ref _____
 East Stand Extension
 Drawn by _____ Date drawn _____

London 1 James Street London W1U 1DR
 T+44(0)20 7907 2222 F+44(0)20 7907 2299
 Sevenoaks 7 Blighs Walk Sevenoaks TN13 1DB
 T+44(0)20 7907 2222 F+44(0)1732 467 841

Project number 15735 Drawing number 159 Revision P01

Drawn by KI Date drawn 08.07.16
 Checked by PY Date checked 14.07.16