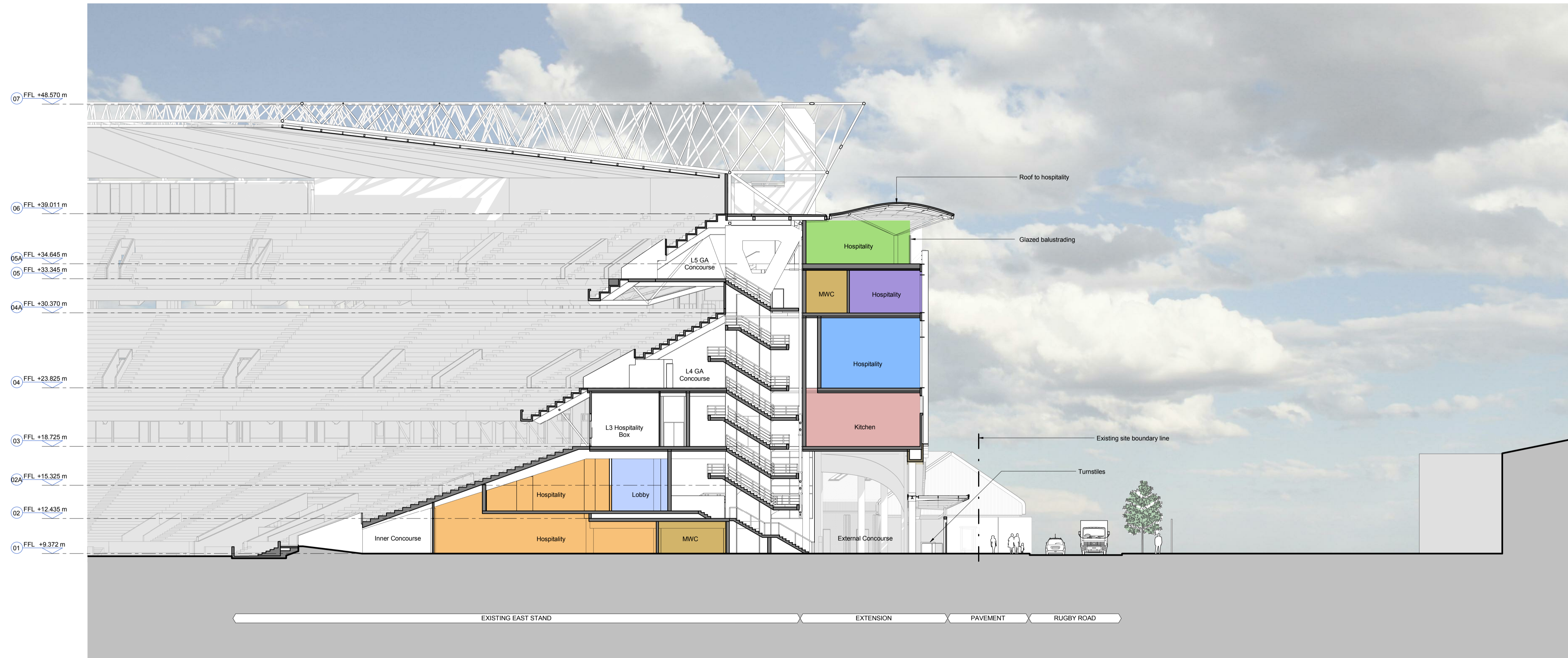


Revisions		
P01 28.06.16	PLANNING ISSUE	AE PY
P02 14.07.16	REVISED PLANNING ISSUE	KI PY



1 SECTION
 B SECTION GA
 1 : 200

NOTES

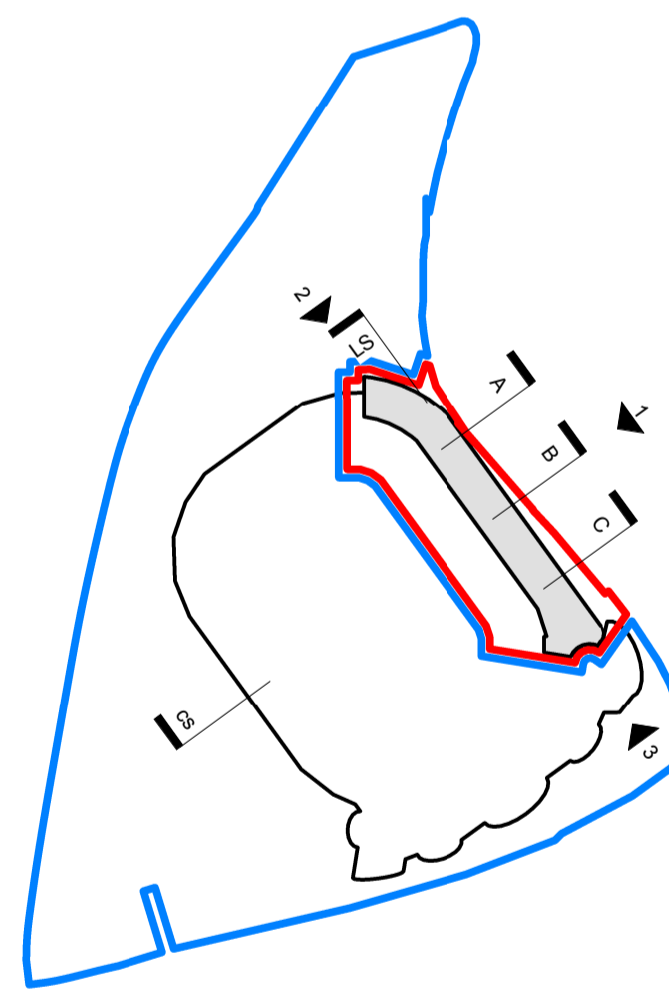
To be read in conjunction with the following drawing series:
 001, 010, 020, 030, 110, 120, 200, 300, 800.

All colours denote hospitality and support areas as note on the drawings.

KEY

- Development Boundary
- Site Ownership Boundary

KEY PLAN



PLANNING	
Client	RFU
Project	TWICKENHAM STADIUM EAST STAND EXTENSION
Drawing title	GA SECTION B

KSS Scale at A1
 1 : 200
 File ref
 East Stand Extension
 Drawn by Date drawn
 Checked by Date checked

London 1 James Street London W1U 1DR T+44(0)20 7907 2222 F+44(0)20 7907 2299	Sevenoaks 7 Bilgys Walk Sevenoaks TN13 1DB T+44(0)20 7907 2222 F+44(0)1732 467 841	KI 10.06.16
		PY 14.07.16

Project number	Drawing number	Revision
15735	202	P02