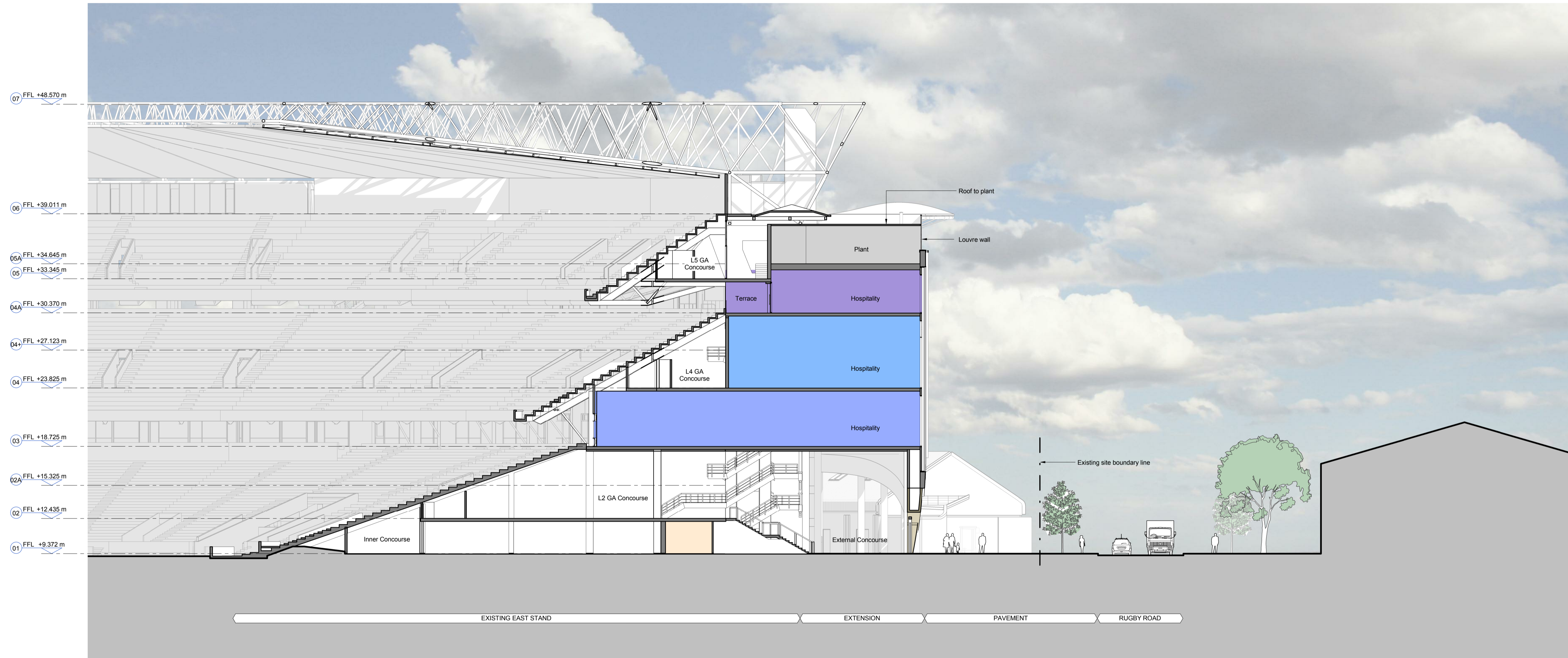


Revisions		
P01 28.06.16	PLANNING ISSUE	AE PY
P02 14.07.16	REVISED PLANNING ISSUE	KI PY



**1 SECTION**  
 C SECTION GA  
 1 : 200

**NOTES**

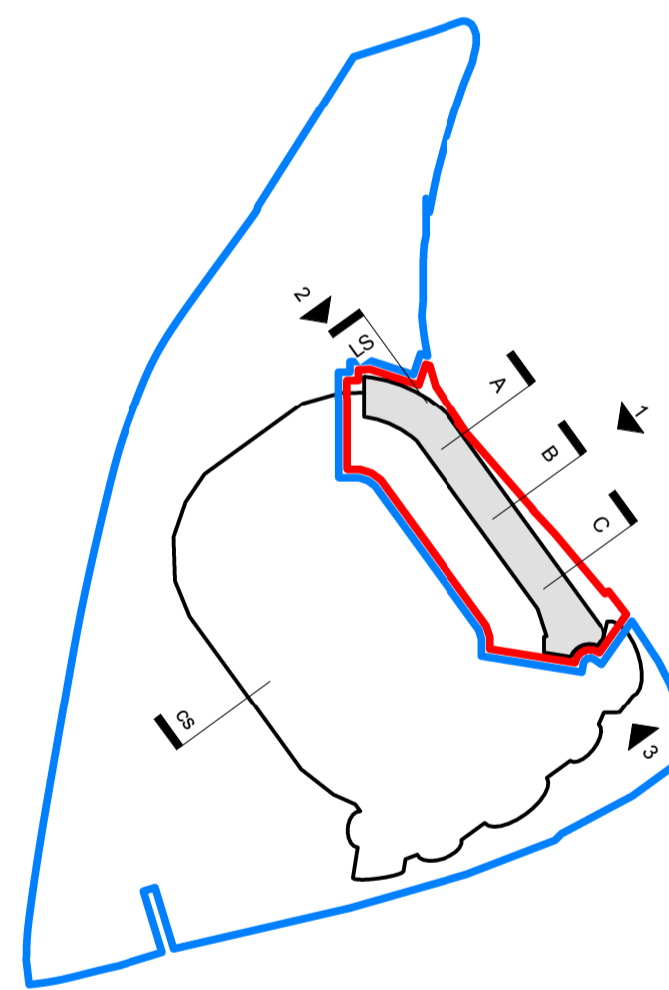
To be read in conjunction with the following drawing series:  
 001,010,020,030,110,120,200,300,800.

All colours denote hospitality and support areas as note on the drawings.

**KEY**

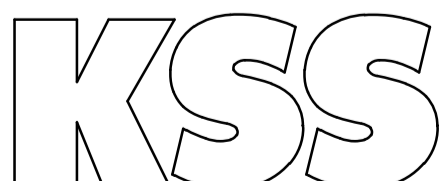
- Development Boundary
- Site Ownership Boundary

**KEY PLAN**



**PLANNING**

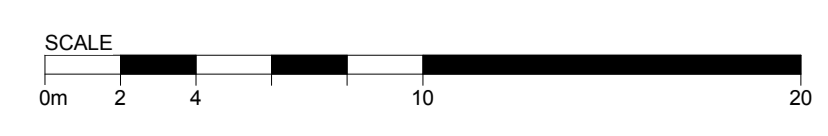
Client  
 RFU  
 Project  
**TWICKENHAM STADIUM  
 EAST STAND EXTENSION**  
 Drawing title  
**GA SECTION C**



London  
 1 James Street  
 London W1U 1DR  
 T+44(0)20 7907 2222  
 F+44(0)20 7907 2299

Sevenoaks  
 7 Bilghs Walk  
 Sevenoaks TN13 1DB  
 T+44(0)20 7907 2222  
 F+44(0)1732 467 841

Scale at A1	1 : 200
File ref	East Stand Extension
Drawn by	Date drawn
KI	10.06.16
Checked by	Date checked
PY	14.07.16



Project number	Drawing number	Revision
15735	203	P02