

## **Appendix 3: Proposed Site Plan and Drainage Layout**



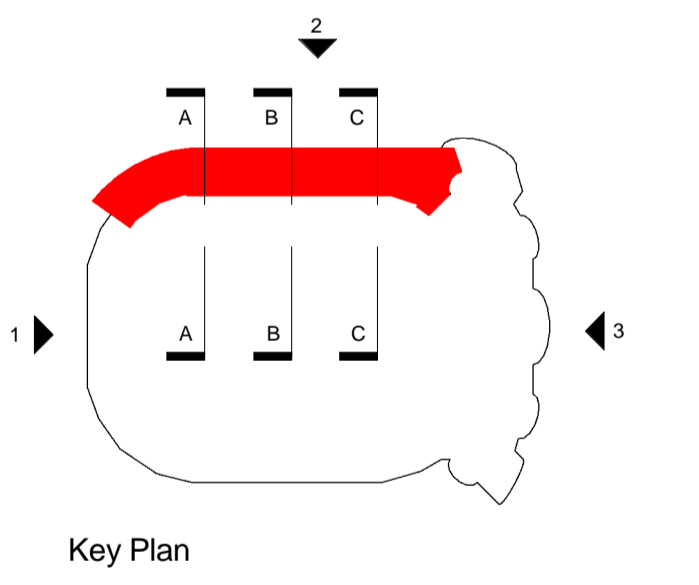
**Health and Safety Information**  
 In addition to the hazards/risks normally associated with the types of work detailed on this drawing, please note the following:

- Construction
- Maintenance / Cleaning / Operation
- Decommissioning / Demolition

**Revisions**

Revision	Initial Issue	AE	PY
A	29.04.16	Initial Issue	AE PY
B	06.05.16	General Updates	AE PY
C	20.05.16	General Updates	AE PY
D	26.05.16	General Updates	AE PY
E	31.05.16	General Updates	NK PY
F	09.06.16	Fencing line revised	LP JB

- NOTES:**
- These drawings are based on record drawings received from the RFU. We cannot verify the accuracy of the existing structure shown and any works will need to be properly surveyed prior to construction.
  - These drawings are issued for use in backgrounds to help with the production of project drawings only and for information and should not be noted as KSS issue. They are used at your own risk.
  - For details of proposed works refer to KSS drawings and information.
  - All information to read in conjunction with M&E and Structural Engineers' details.



**FOR COMMENT**

Client  
RFU

Project  
**TWICKENHAM STADIUM  
EAST STAND EXTENSION**

Drawing title  
**LEVEL 1**

Scale at A1  
1 : 500

File ref  
East Stand Extension

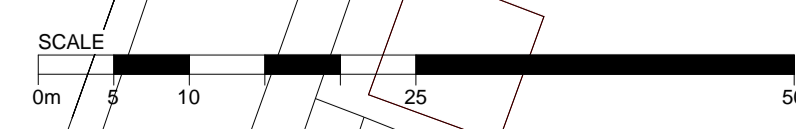
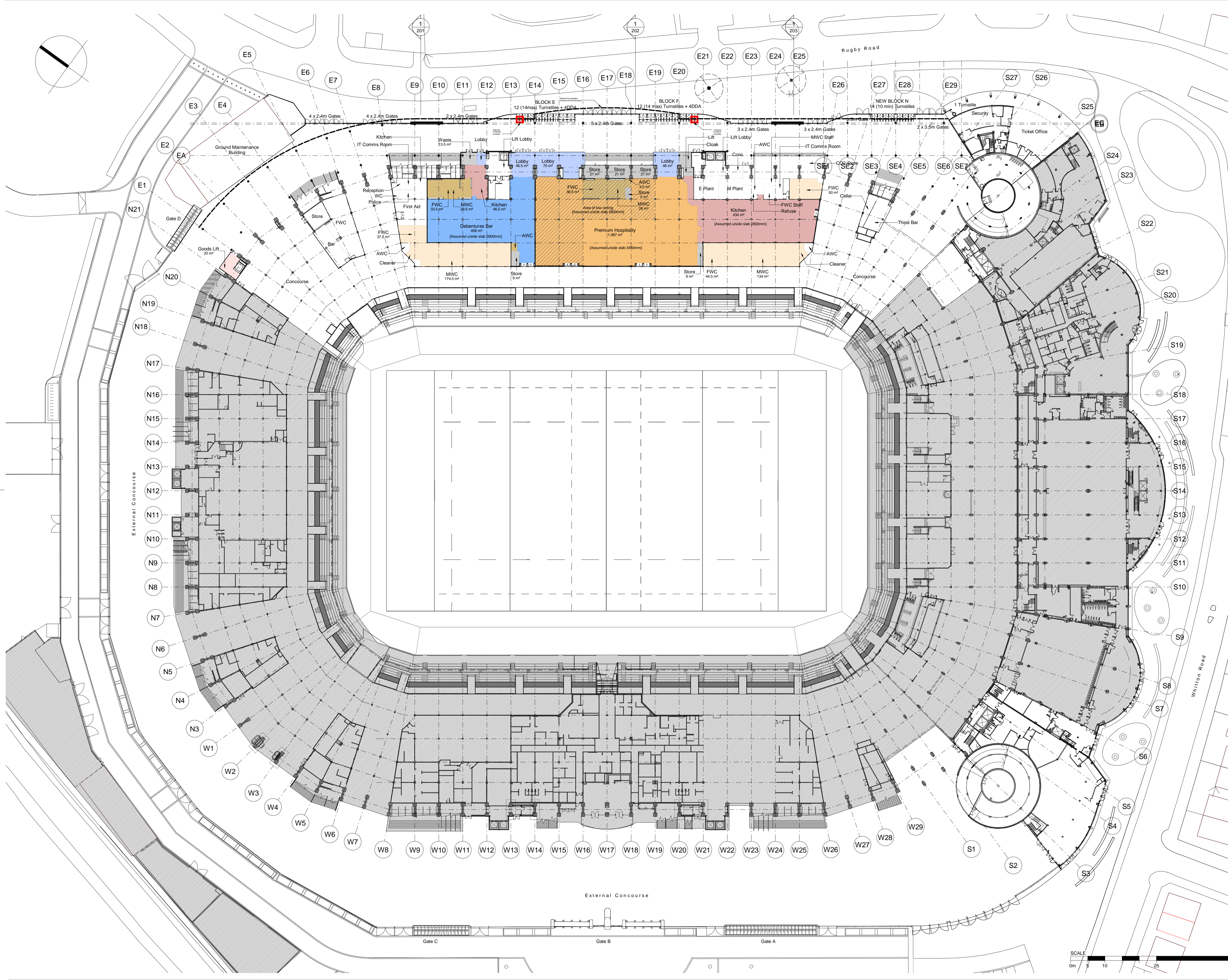
Drawn by  
Date drawn

Checked by  
Date checked

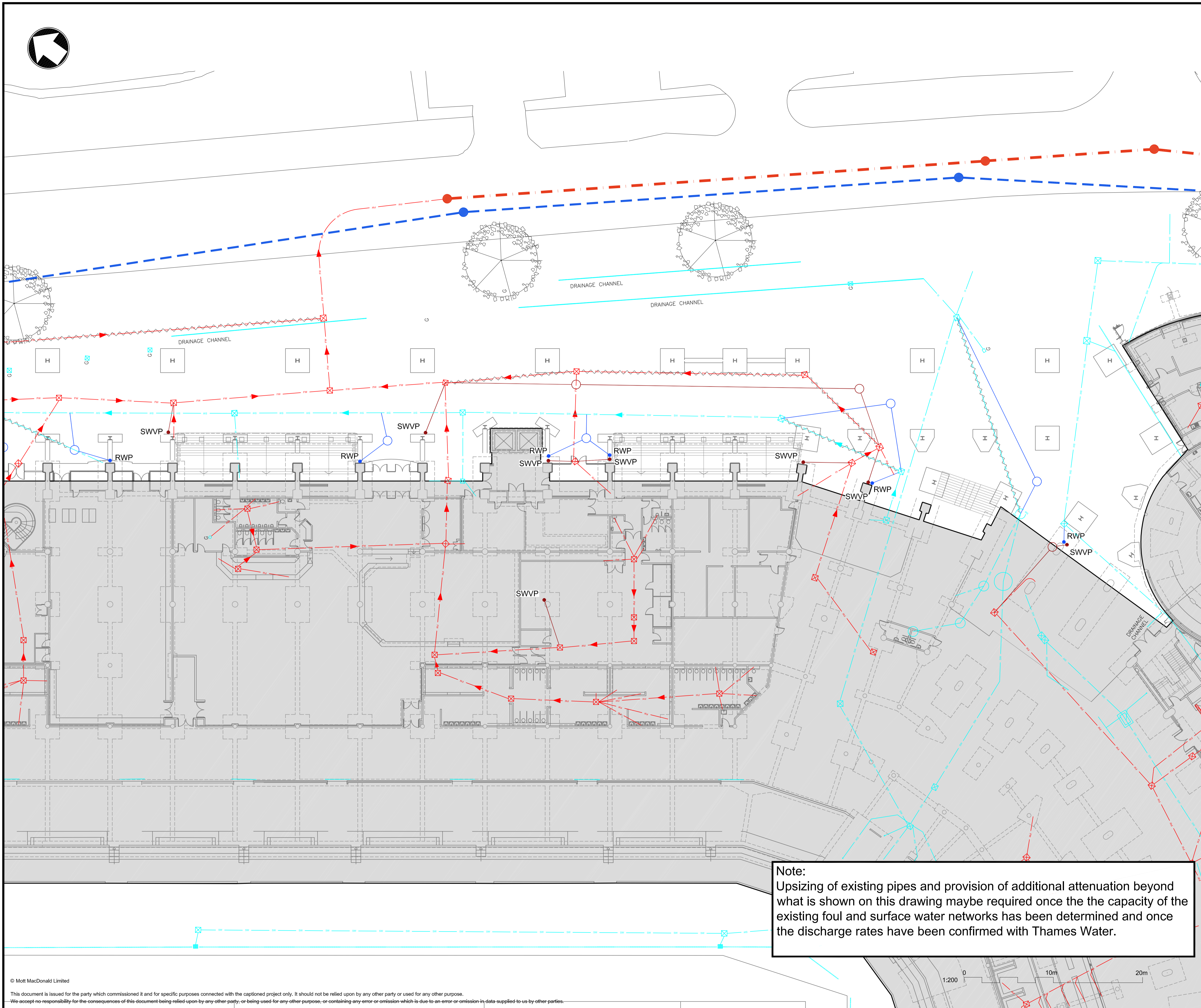
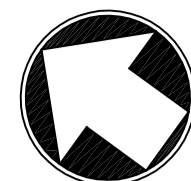
Project number  
Drawing number  
Revision

15735 SK100 F

**Work in progress**







- Notes**
1. Do not scale from this drawing.
  2. All dimensions are in millimeters unless otherwise stated.
  3. All levels are in metres above ordnance datum.
  4. This drawing to be read in conjunction with all other contract drawings.
  5. All work to be carried out in accordance with issued specification.
  6. All invert levels refer to outgoing pipe unless otherwise indicated on drawings.
  7. Invert levels, dimensions and locations of existing sewers and manholes affecting the works to be verified and assessed for suitability prior to commencement, particularly at points of connection.
  8. All underground drainage to be vitrified clay to BS EN 295, concrete to BS EN 5911 or structural wall plastic pipes to BS EN 13476.
  9. The contractor is to take measures to ensure that the new and existing drainage system is adequately protected from damage during the construction period.
  10. All abandoned sewerage to be removed and excavations backfilled with selected engineered fill.
  11. All private drainage within the site to comply with the requirements of BS EN 752:2008 and the Building Regulations Part H.
  12. Pipes with less than 600mm cover to be surrounded in concrete. Pipes with more than 600mm cover a Class S bed and surround is required.

- Key to symbols**
- Existing Private Surface Water Sewer
  - Existing Private Foul Water Sewer
  - Existing Private Surface Water Manhole
  - Existing Private Foul Water Manhole
  - Existing Public Surface Water Sewer
  - Existing Public Foul Water Sewer
  - Existing Public Surface Water Manhole
  - Existing Public Foul Water Manhole
  - Abandoned Private Surface Water Sewer
  - Abandoned Private Foul Water Sewer
  - Approximate Line of Historical Watercourse
  - Proposed Private Surface Water Drainage
  - Proposed Private Foul Water Drainage
  - Proposed Private Surface Water Manhole
  - Proposed Private Foul Water Manhole
  - RWP Proposed Rainwater Downpipe
  - SWVP Proposed Foul Pop-up

**Reference drawings**

Rev	Date	Drawn	Description	Ch'k'd	App'd
P02	19/05/16	CC	Stage 2 Issue	AS	RF
P01	13/05/16	CC	Preliminary Issue	AS	RF

**Mott MacDonald**

10 Fleet Place  
London  
EC4M 7RB  
GB

T (0)20 7651 0300  
F  
W www.mottmac.com

**Client**

**RFU**

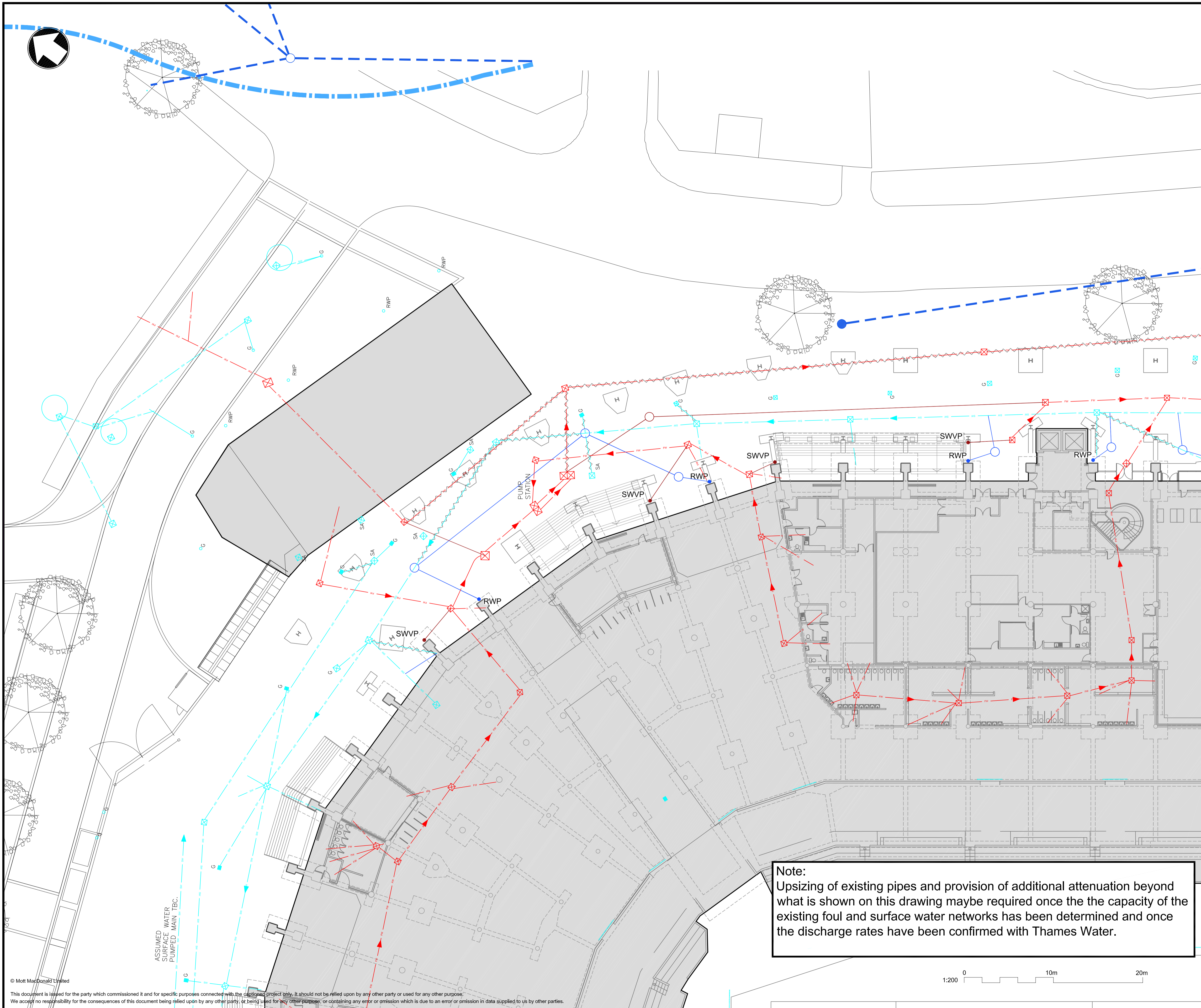
**Title**

Twickenham Stadium  
East Stand Development  
Proposed Below Ground  
Drainage Layout  
Sheet 1 of 2

Designed	A Sims	Eng check	A Sims
Drawn	C Chau	Coordination	A Sims
Dwg check	A Sims	Approved	R Foord
Scale at A1	Status	Rev	Security
1:200	PRE	P2	STD
Drawing Number			
366764-MMD-00-XX-SK-C-0001			

**Note:**  
Upsizing of existing pipes and provision of additional attenuation beyond what is shown on this drawing maybe required once the the capacity of the existing foul and surface water networks has been determined and once the discharge rates have been confirmed with Thames Water.





- Notes
1. Do not scale from this drawing.
  2. All dimensions are in millimeters unless otherwise stated.
  3. All levels are in metres above ordnance datum.
  4. This drawing is to be read in conjunction with all other contract drawings.
  5. All work to be carried out in accordance with issued specification.
  6. All invert levels refer to outgoing pipe unless otherwise indicated on drawings.
  7. Invert levels, dimensions and locations of existing sewers and manholes affecting the works to be verified and assessed for suitability prior to commencement, particularly at points of connection.
  8. All underground drainage to be verified clay to BS EN 295, concrete to BS EN 5911 or structural wall plastic pipes to BS EN 13476.
  9. The contractor is to take measures to ensure that the new and existing drainage system is adequately protected from damage during the construction period.
  10. All abandoned sewerage to be removed and excavations backfilled with selected engineered fill.
  11. All private drainage within the site to comply with the requirements of BS EN 752:2008 and the Building Regulations Part H.
  12. Pipes with less than 600mm cover to be surrounded in concrete. Pipes with more than 600mm cover a Class S bed and surround is required.

- Key to symbols
- Existing Private Surface Water Sewer
  - Existing Private Foul Water Sewer
  - Existing Private Surface Water Manhole
  - Existing Private Foul Water Manhole
  - Existing Public Surface Water Sewer
  - Existing Public Foul Water Sewer
  - Existing Public Surface Water Manhole
  - Existing Public Foul Water Manhole
  - Abandoned Private Surface Water Sewer
  - Abandoned Private Foul Water Sewer
  - Approximate Line of Historical Watercourse
  - Proposed Private Surface Water Drainage
  - Proposed Private Foul Water Drainage
  - Proposed Private Surface Water Manhole
  - Proposed Private Foul Water Manhole
  - Proposed Rainwater Downpipe
  - Proposed Foul Pop-up

Reference drawings

P02	19/05/16	CC	Stage 2 Issue	AS	-
P01	13/05/16	CC	Preliminary Issue	AS	-
Rev	Date	Drawn	Description	Ch'k'd	App'd

10 Fleet Place  
London  
EC4M 7RB  
GB  
T (0)20 7651 0300  
F www.mottmac.com

Client

Title  
**Twickenham Stadium  
 East Stand Development  
 Proposed Below Ground  
 Drainage Layout  
 Sheet 2 of 2**

Designed	A Sims	Eng check	A Sims
Drawn	C Chau	Coordination	A Sims
Dwg check	A Sims	Approved	R Foord
Scale at A1	Status	Rev	Security
1:200	PRE	P2	STD
Drawing Number 366764-MMD-00-XX-SK-C-0002			

Note:  
 Upsizing of existing pipes and provision of additional attenuation beyond what is shown on this drawing maybe required once the the capacity of the existing foul and surface water networks has been determined and once the discharge rates have been confirmed with Thames Water.

