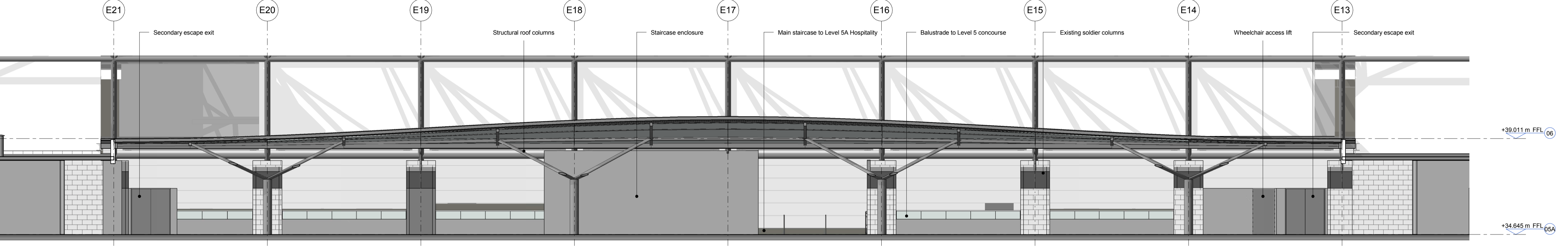
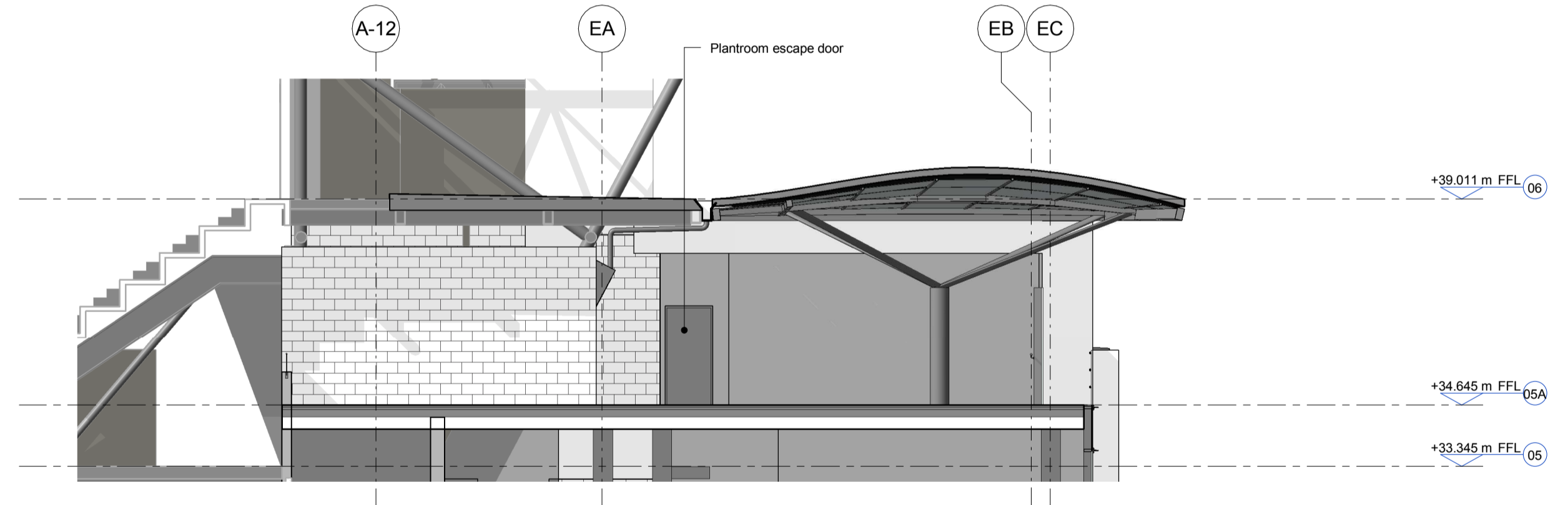


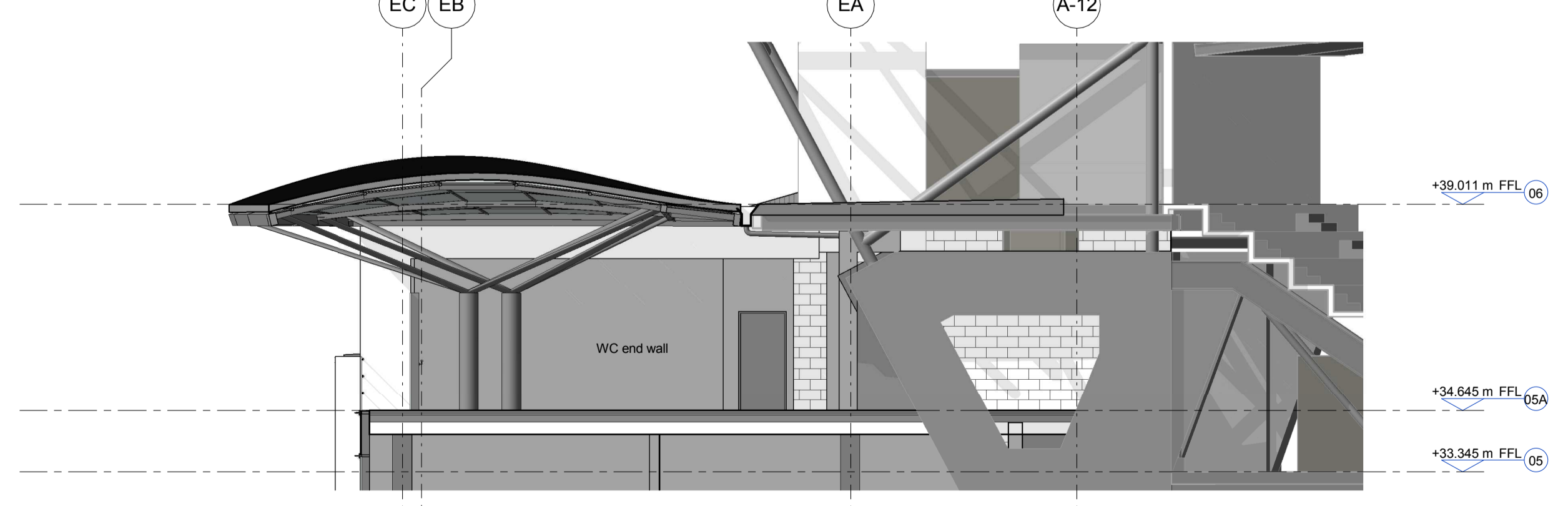
1 SECTION
 LEVEL 5A INTERIOR ELEVATION LOOKING EAST 1:100



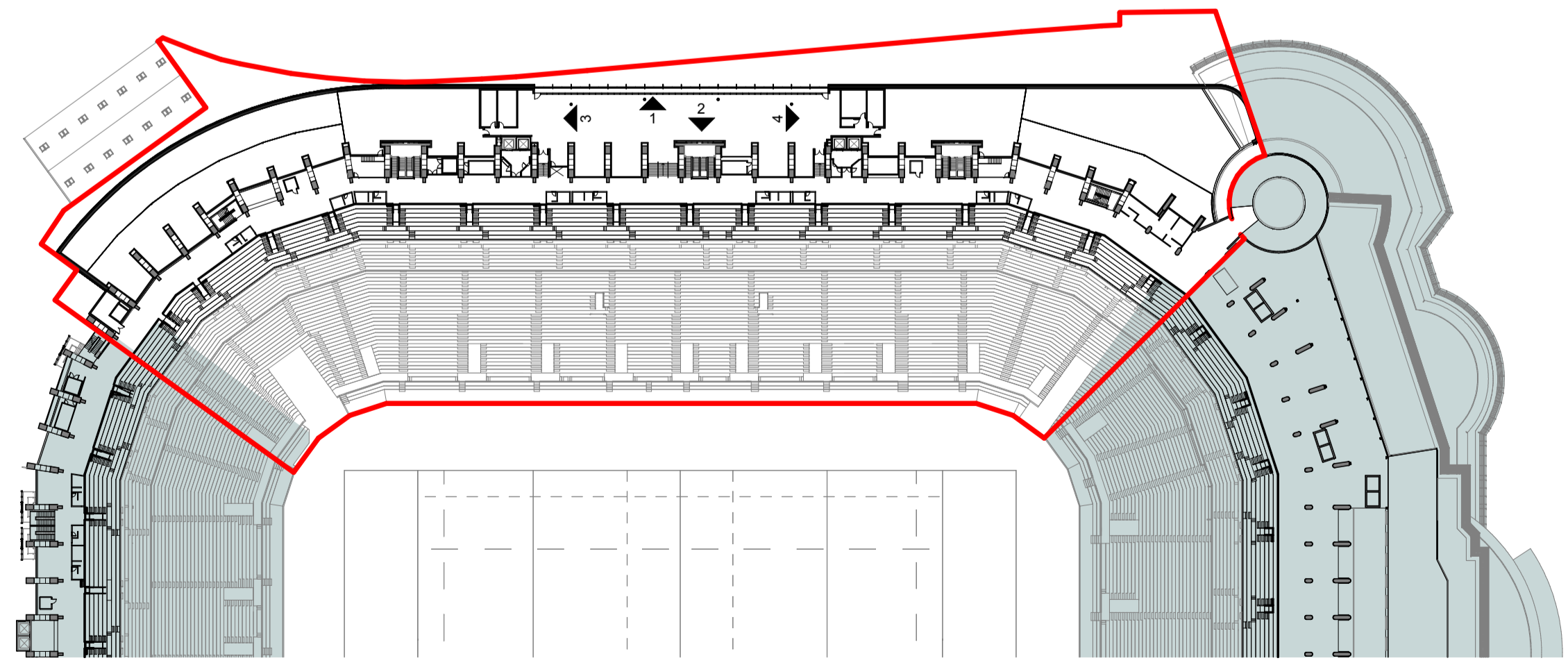
2 SECTION
 LEVEL 5A INTERIOR ELEVATION LOOKING WEST 1:100



3 SECTION
 LEVEL 5A INTERIOR ELEVATION LOOKING NORTH 1:100



4 SECTION
 LEVEL 5A INTERIOR ELEVATION LOOKING SOUTH 1:100



5 PLAN
 LEVEL 5A PLAN - KEY 1:1000

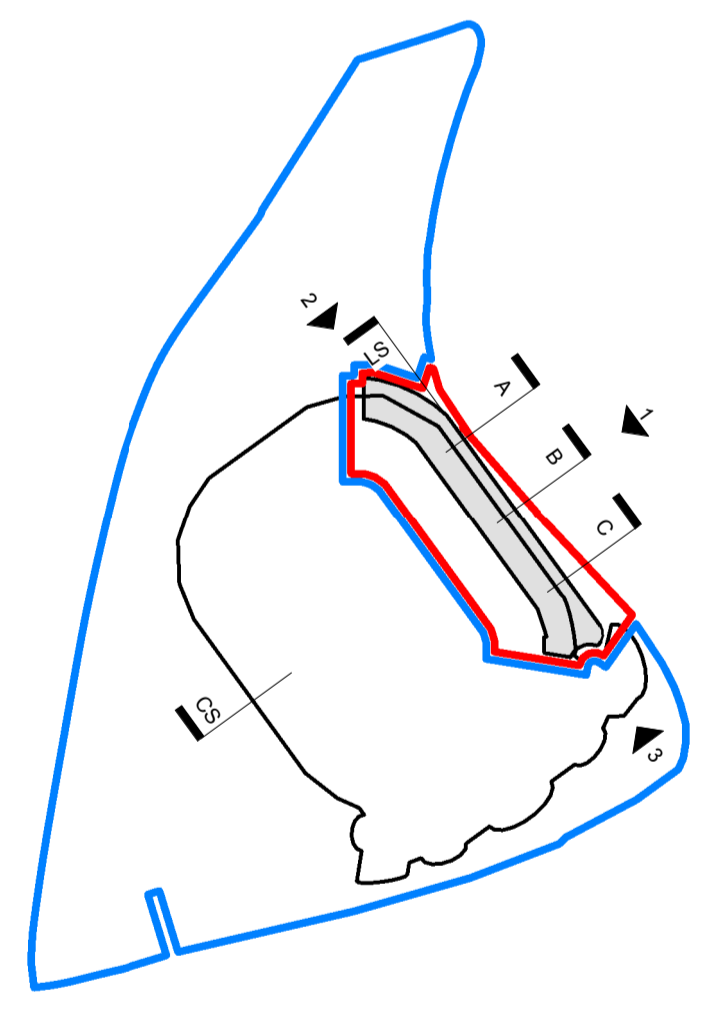
NOTES

To be read in conjunction with the following drawing series:
 001,010,020,030,110,120,200,800.

KEY

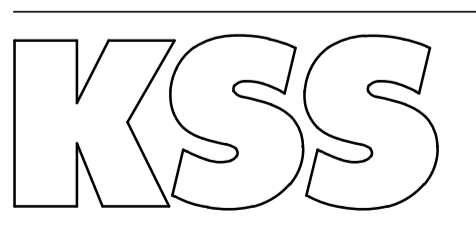
- Development Boundary
- Site Ownership Boundary

KEY PLAN



PLANNING

Client	
RFU	
Project	
TWICKENHAM STADIUM EAST STAND EXTENSION	
Drawing title	
LEVEL 5A TERRACE ELEVATIONS	



London 1 James Street London W1U 1DR T+44(0)20 7907 2222 F+44(0)20 7907 2299	Sevenoaks 7 Blighs Walk Sevenoaks TN13 1DB T+44(0)20 7907 2222 F+44(0)1732 467 841	Scale at A1 As indicated File ref East Stand Extension Drawn by Date drawn	KI 22.07.16
Project number 15735	Drawing number 346	Checked by PY	Date checked 22.07.16
Revision P01			

