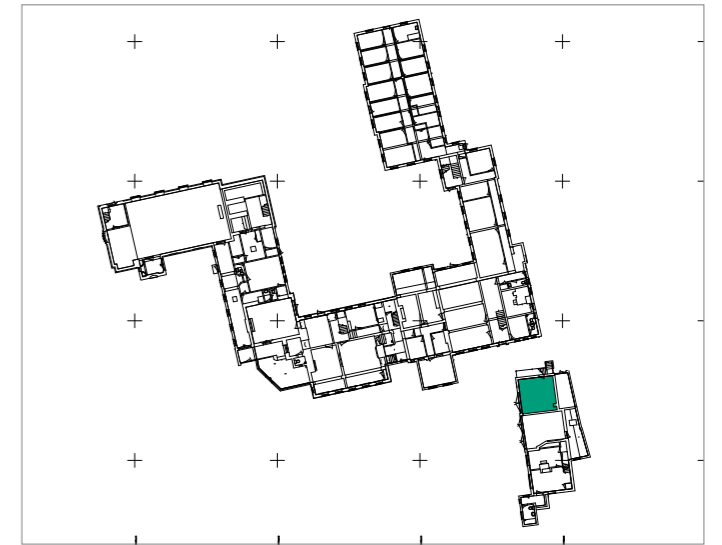
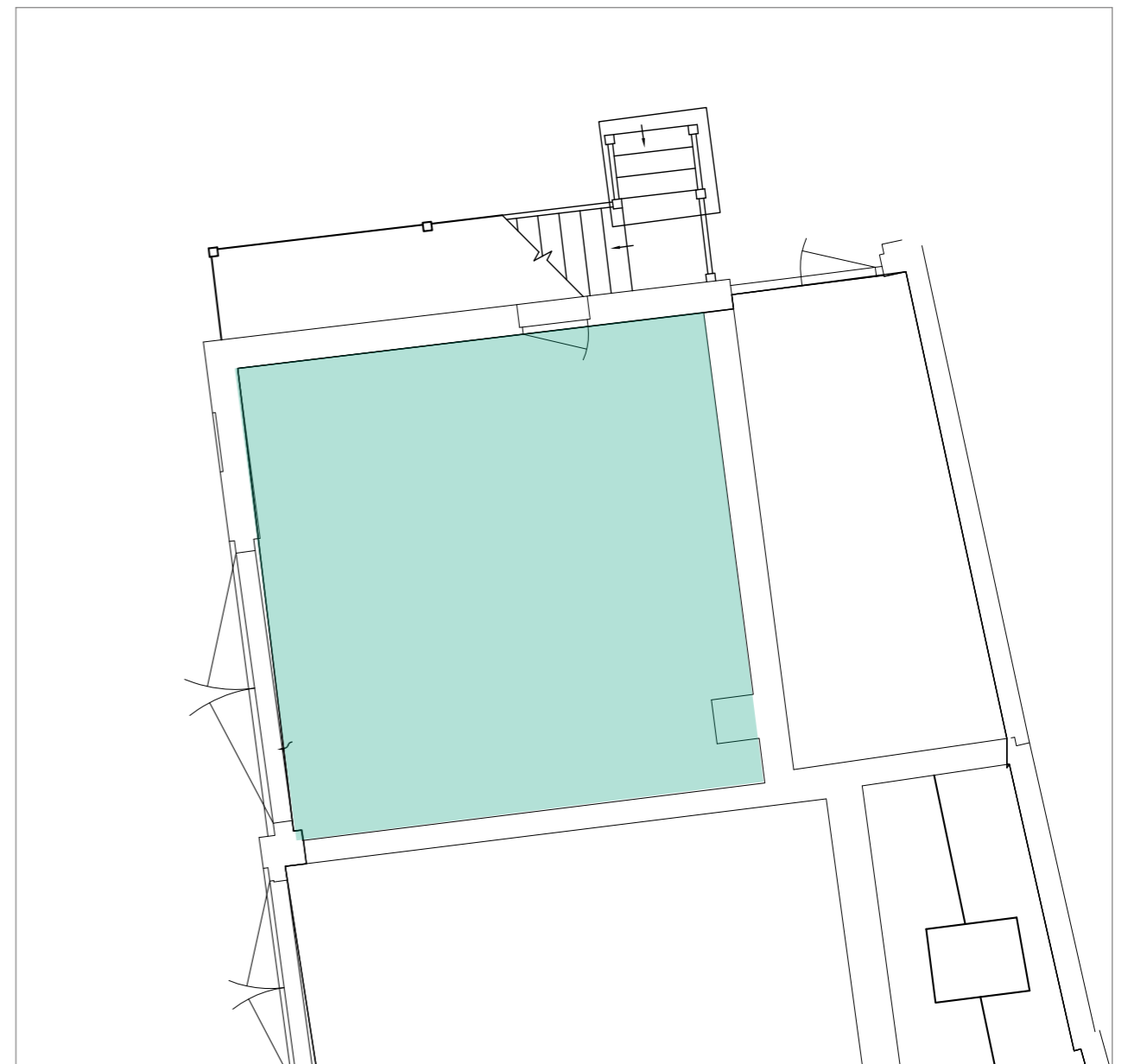


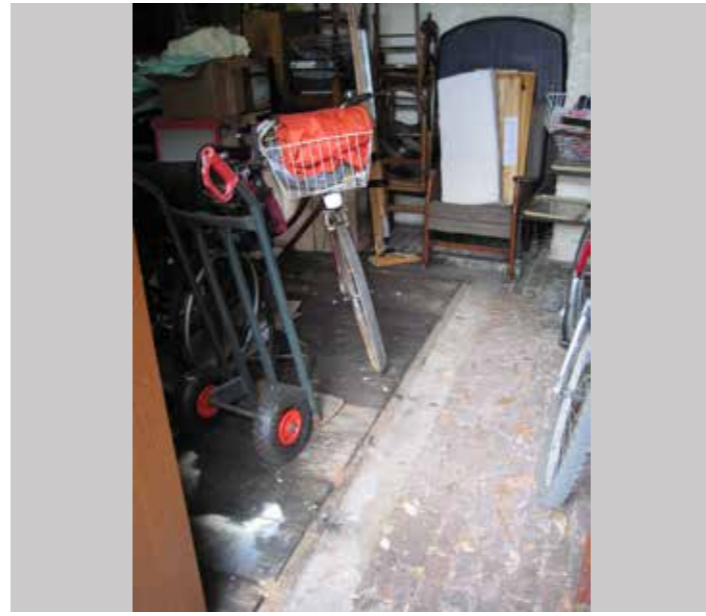
GROUND FLOOR - The Cottage		PRP
Project AA6250 St Michael's Convent, Ham		
Schedule No. 1	Revision: 1	Date: August 2016
Location Gst1.0		
Description <ul style="list-style-type: none"> • Demolition of external stairs at north end. • Internal partition walls between Gst 1.0, 2.0, 6.0 to be removed. • Existing timber doors removed and new glazed door and screen inserted to opening with replacement sliding timber shutters (refer to external sheets). 		

Gst1.0



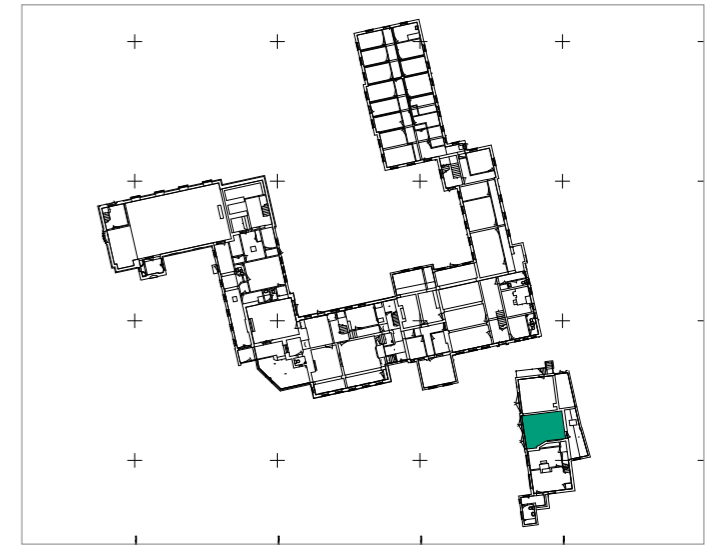
Key



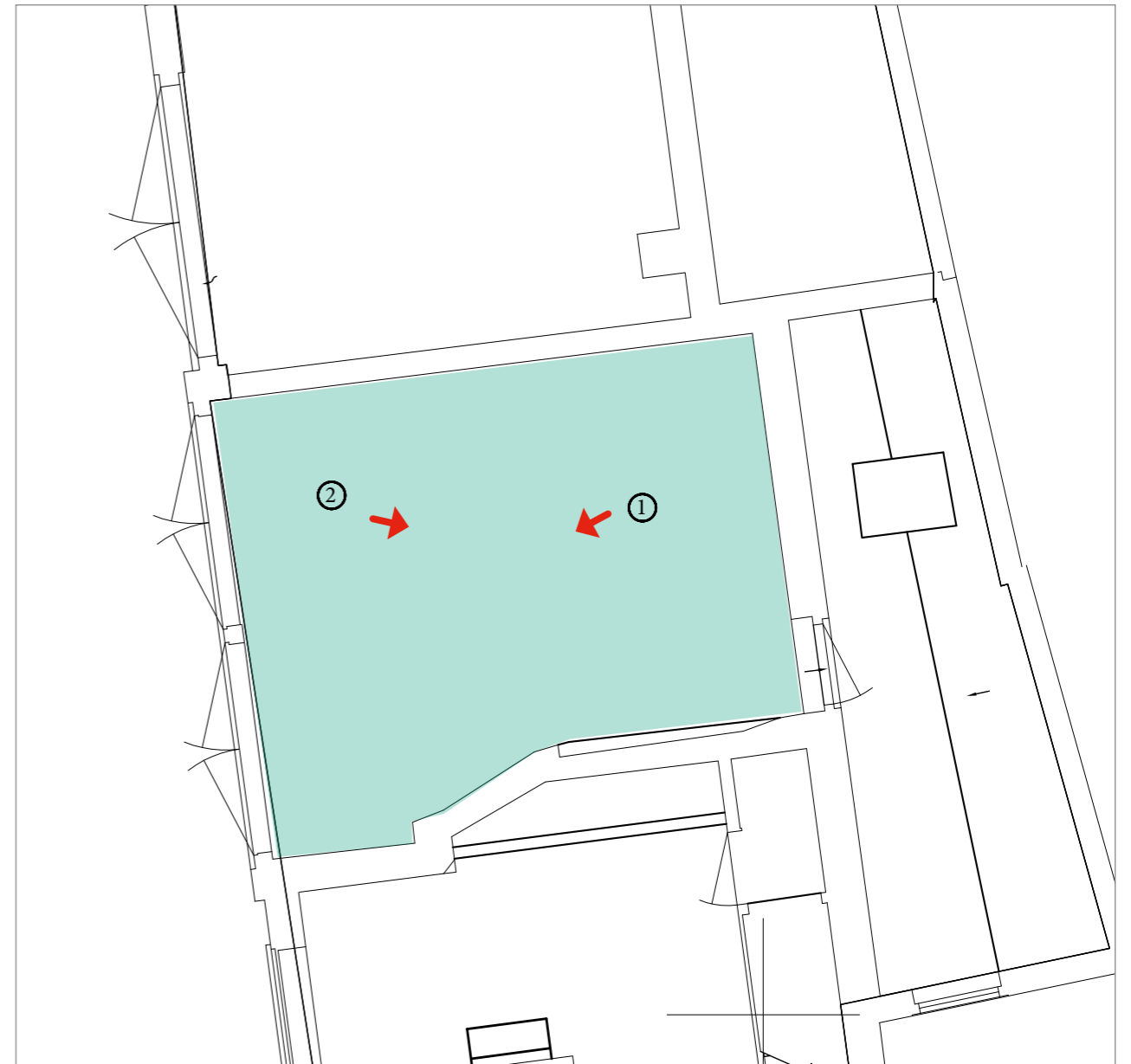


GROUND FLOOR - The Cottage		PRP
Project AA6250 St Michael's Convent, Ham		
Schedule No. 1	Revision: 1	Date: August 2016
Location Gst2.0		
Description <ul style="list-style-type: none"> • Internal partition walls between Gst 1.0, 2.0, 6.0 to be removed. • Existing canted wall between the former garage and residential accommodation (Gst 2.0 and 3.0) retained, opening formed within existing recess. • New staircase inserted • Door opening made in existing wall between Gst 2.0 and Gst .5.0 with new door to form wc. 		

Gst2.0



Key



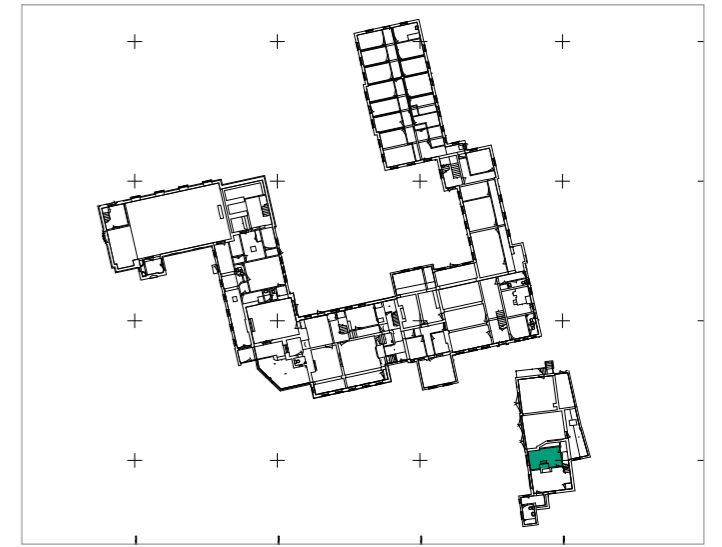


View 1

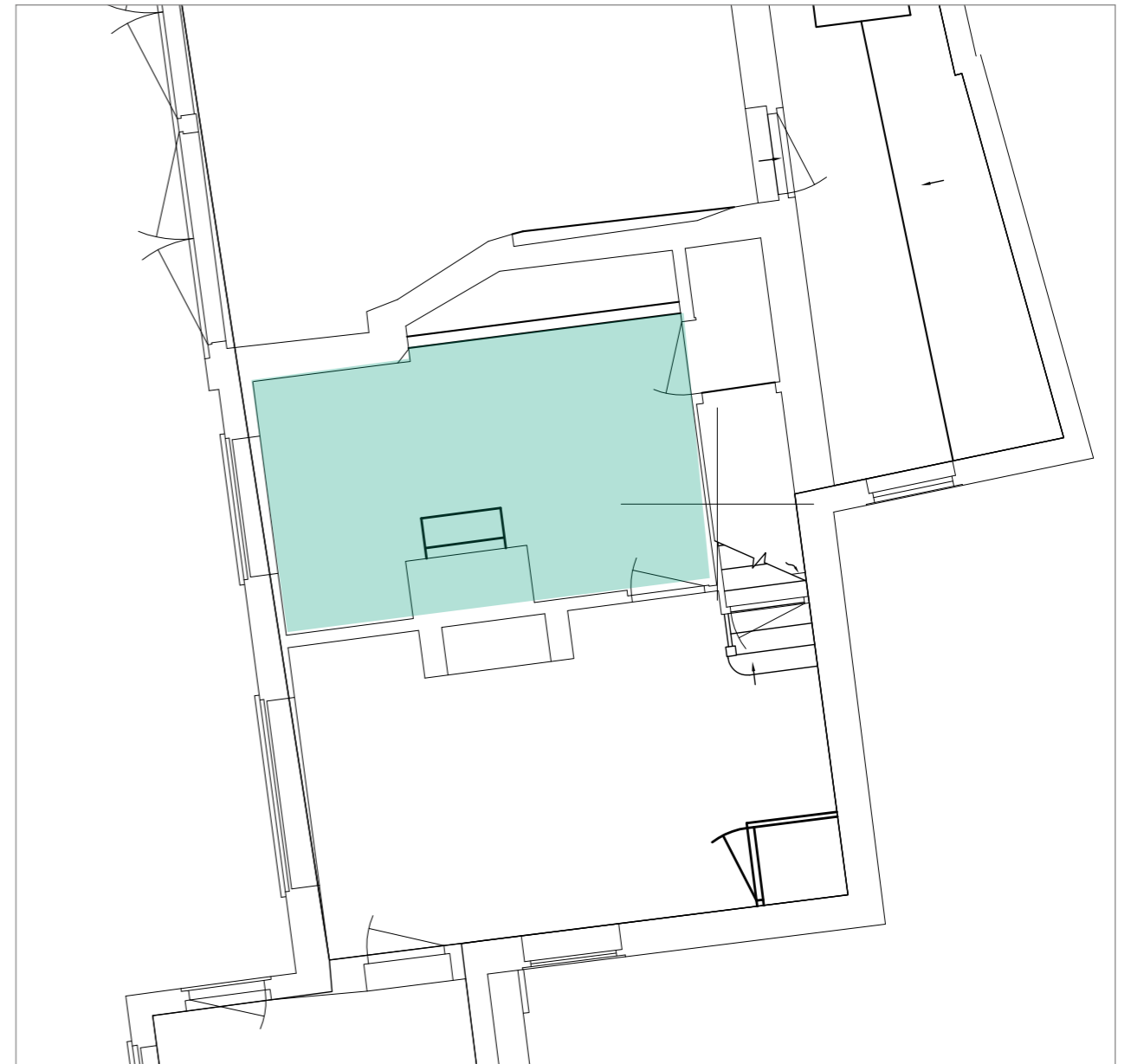
View 2

GROUND FLOOR - The Cottage		PRP
Project AA6250 St Michael's Convent, Ham		
Schedule No. 1	Revision: 1	Date: August 2016
Location Gst3.0		
Description <ul style="list-style-type: none"> Existing canted wall between the former garage and residential accommodation (Gst 2.0 and 3.0) retained, opening formed within existing recess. Internal partition walls between Gst 3.0 and 4.0 to be removed. Central chimney breast retained. 		

Gst3.0



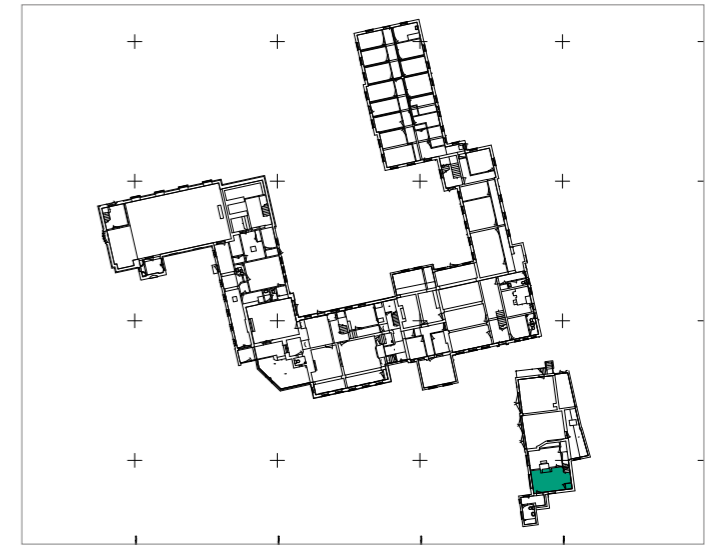
Key



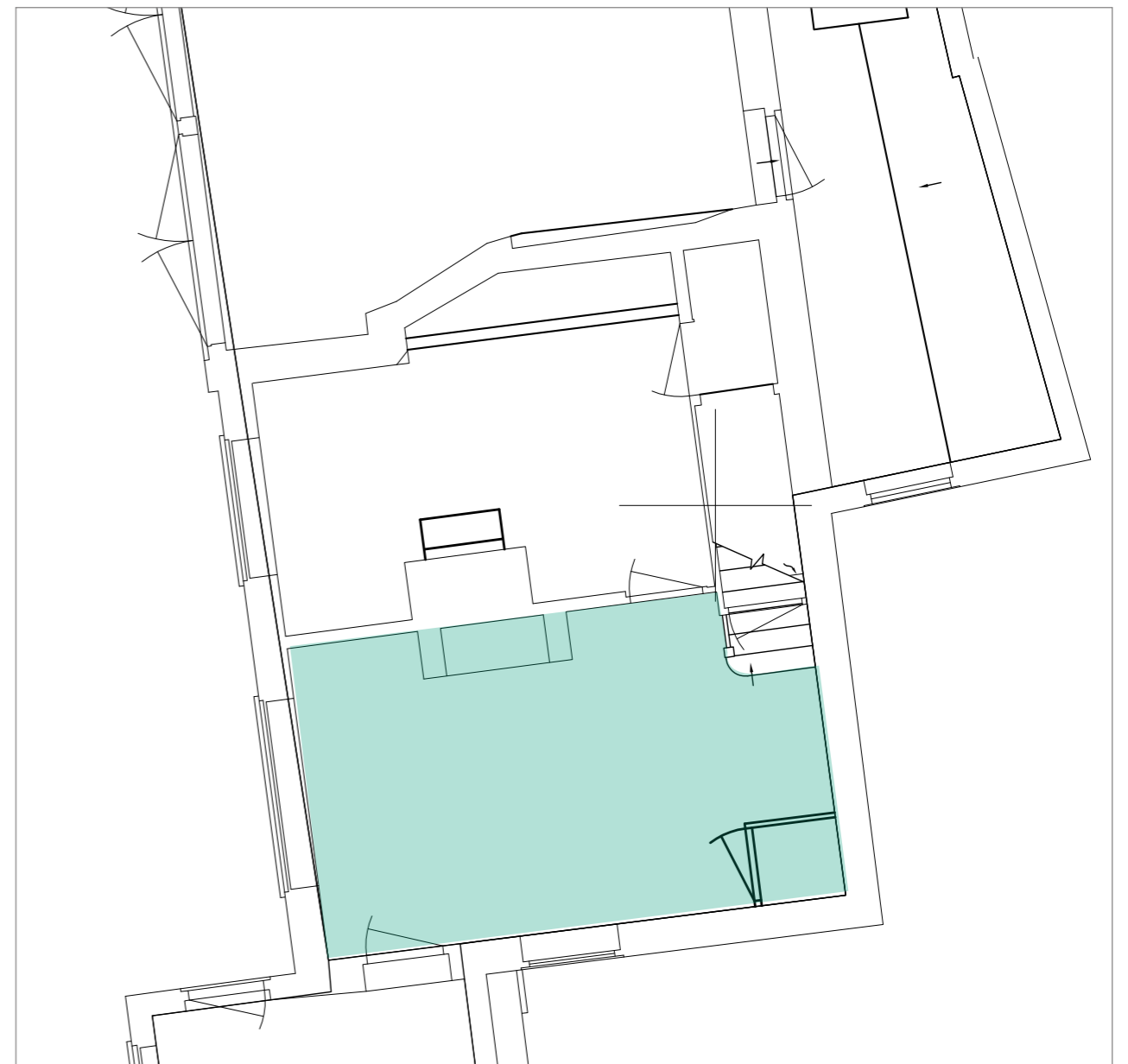


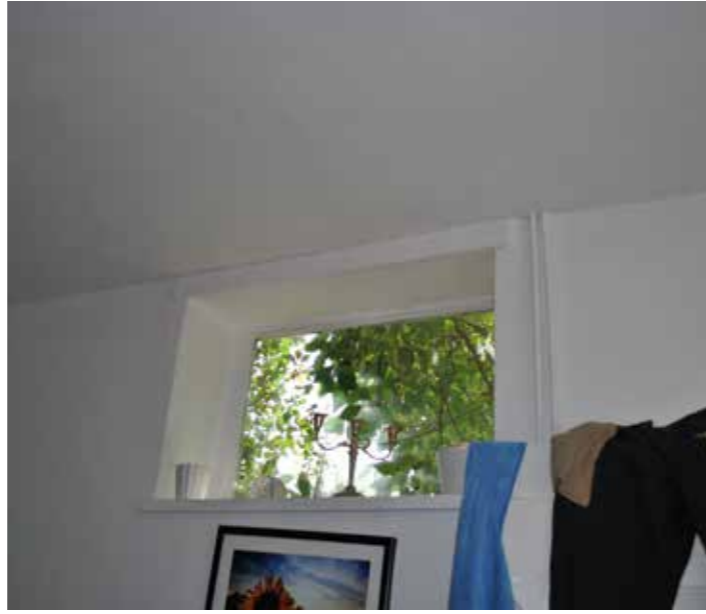
GROUND FLOOR - The Cottage		PRP
Project AA6250 St Michael's Convent, Ham		
Schedule No. 1	Revision: 1	Date: August 2016
Location Gst4.0		
Description <ul style="list-style-type: none"> • Internal partition walls between Gst 3.0 and 4.0 to be removed. Central chimney breast retained. • Existing stairs removed and repositioned in Gst2.0 • Remove cupboard walls and doors on South wall 		

Gst4.0



Key





GROUND FLOOR - The Cottage



Project AA6250 St Michael's Convent, Ham

Schedule No. 1

Revision: 1

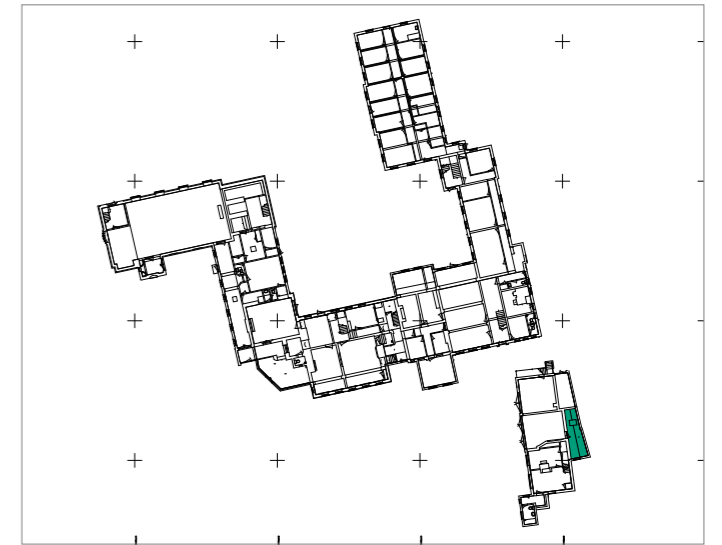
Date: August 2016

Location Gst5.0

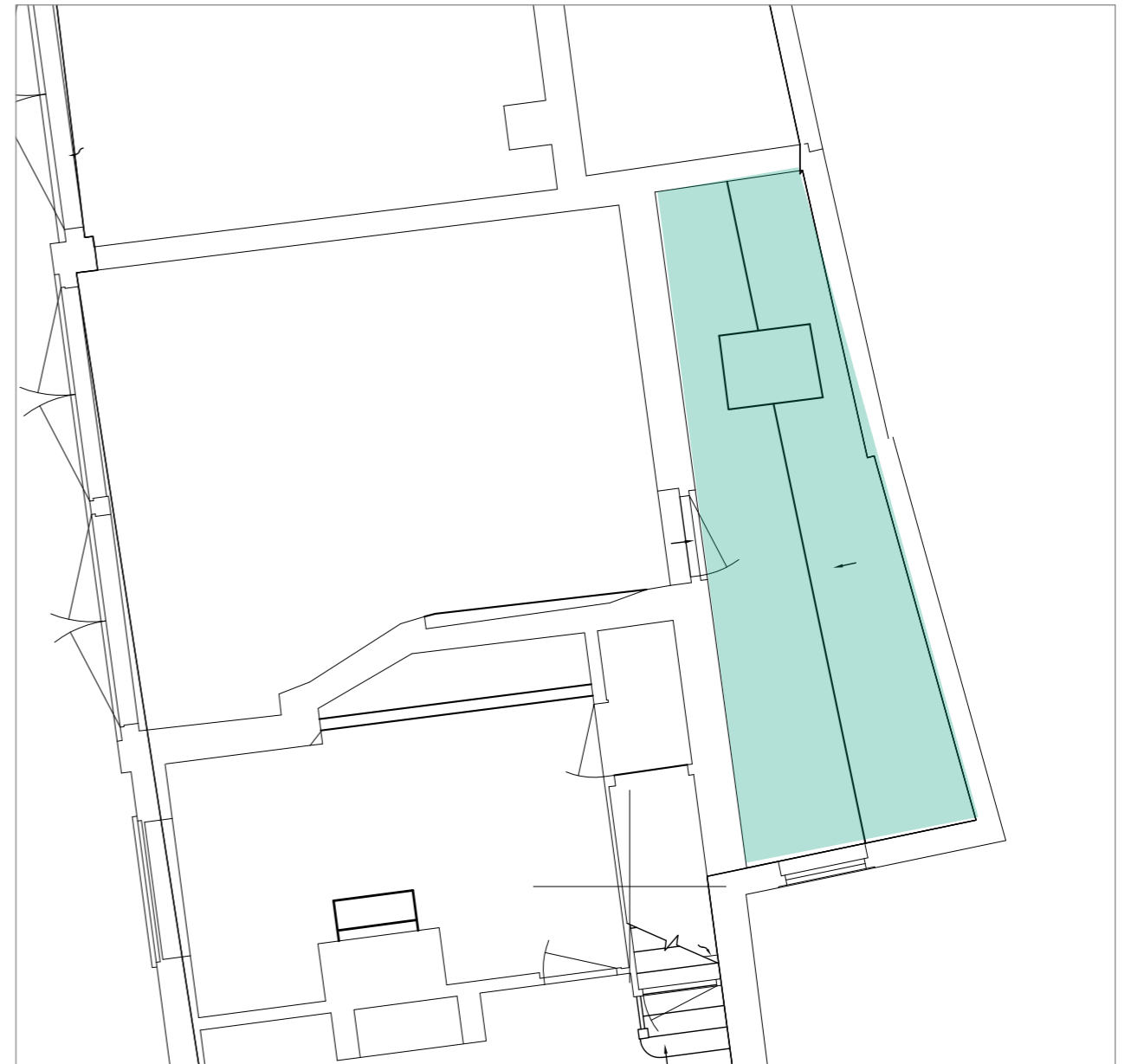
Description

- Internal partition walls inserted in Gst 5.0 to provide wc, store and utility.

Gst5.0



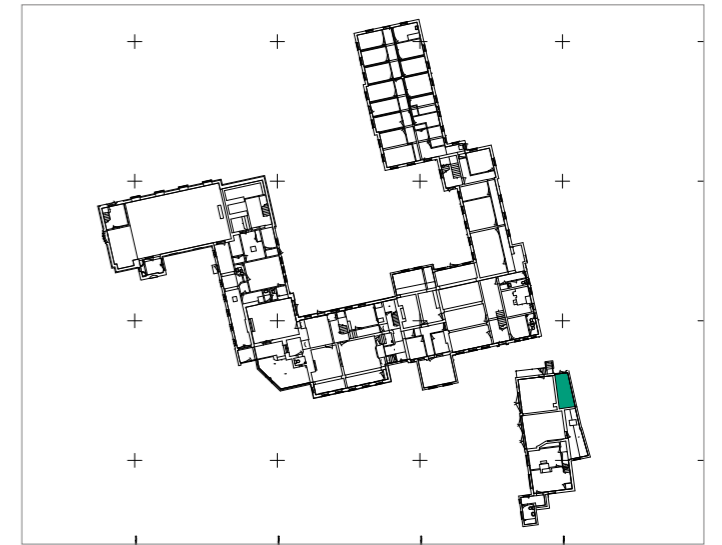
Key



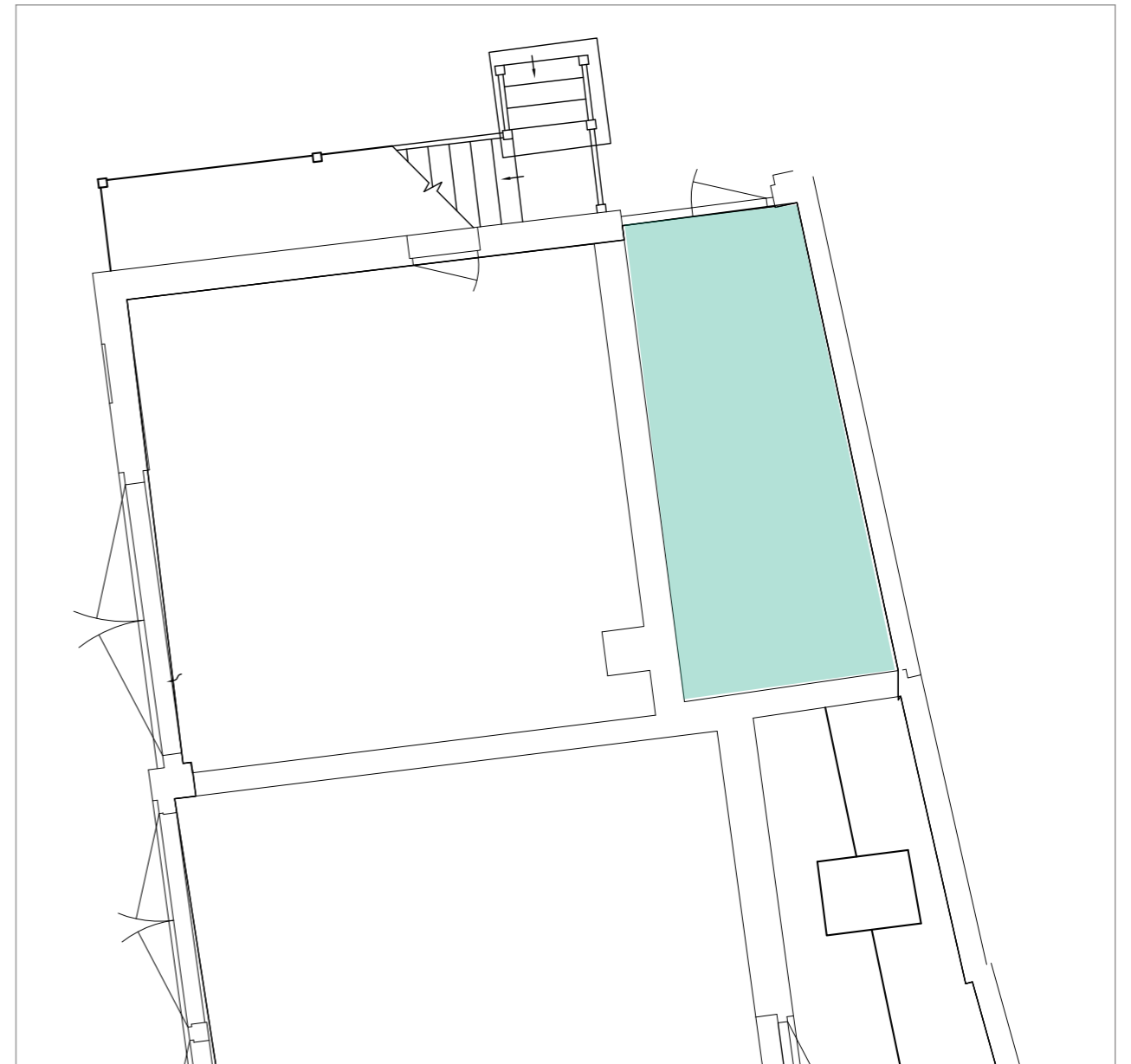


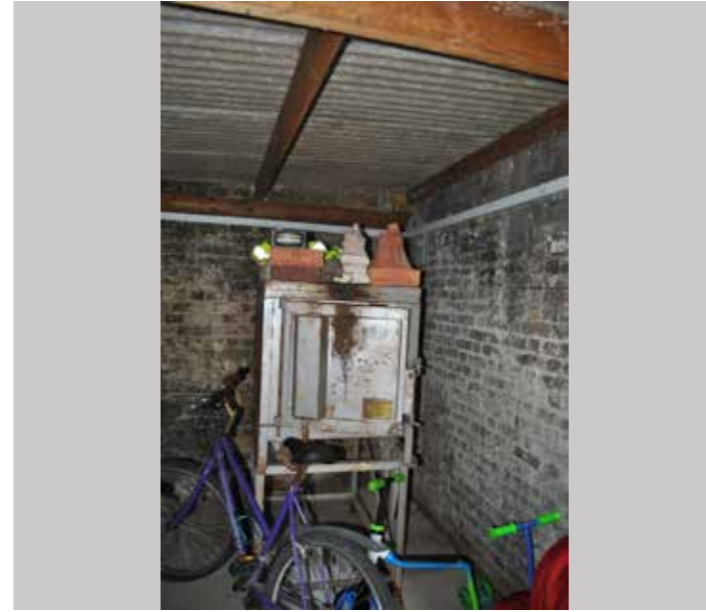
GROUND FLOOR - The Cottage		PRP
Project AA6250 St Michael's Convent, Ham		
Schedule No. 1	Revision: 1	Date: August 2016
Location Gst6.0		
Description <ul style="list-style-type: none">Reroofing of single storey outbuilding		

Gst6.0



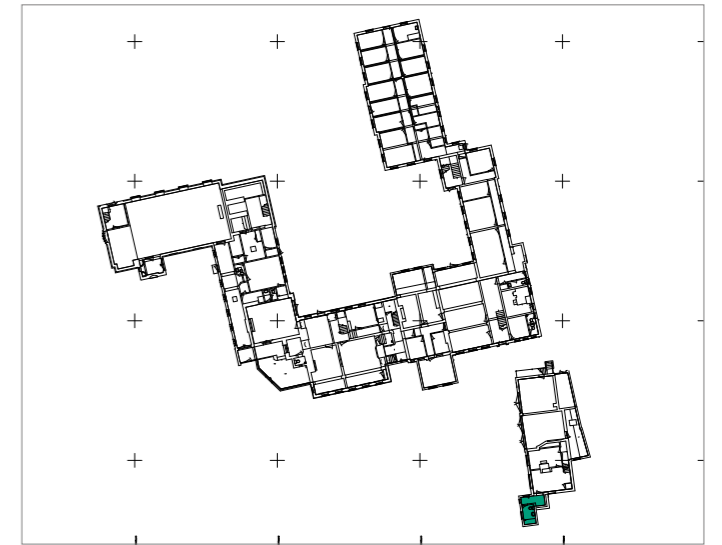
Key



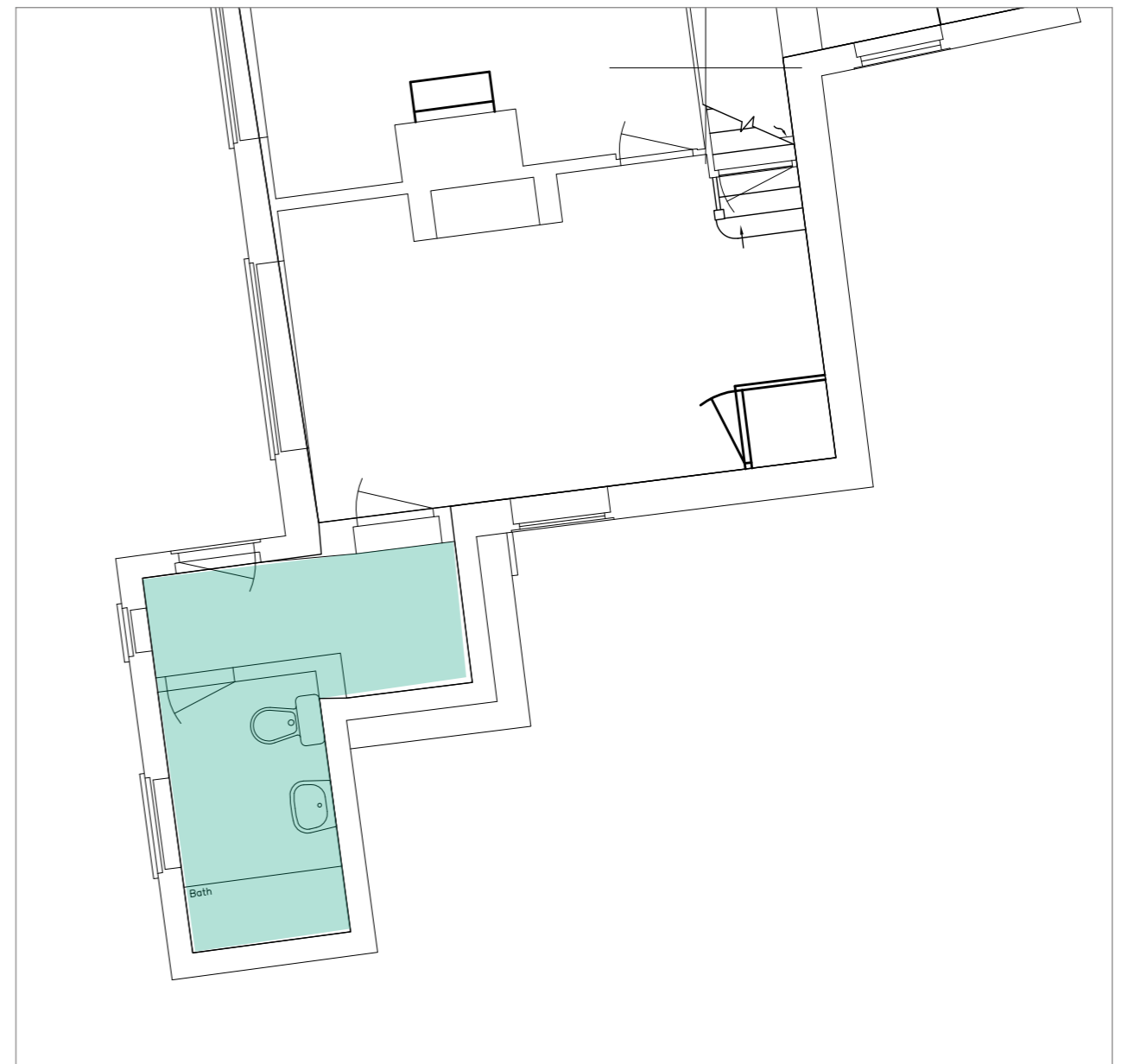


GROUND FLOOR - The Cottage		PRP
Project AA6250 St Michael's Convent, Ham		
Schedule No. 1	Revision: 1	Date: August 2016
Location Gst7.0		
Description <ul style="list-style-type: none">Demolition of single storey porch (Gst 7.0) at the south west corner.		

Gst7.0

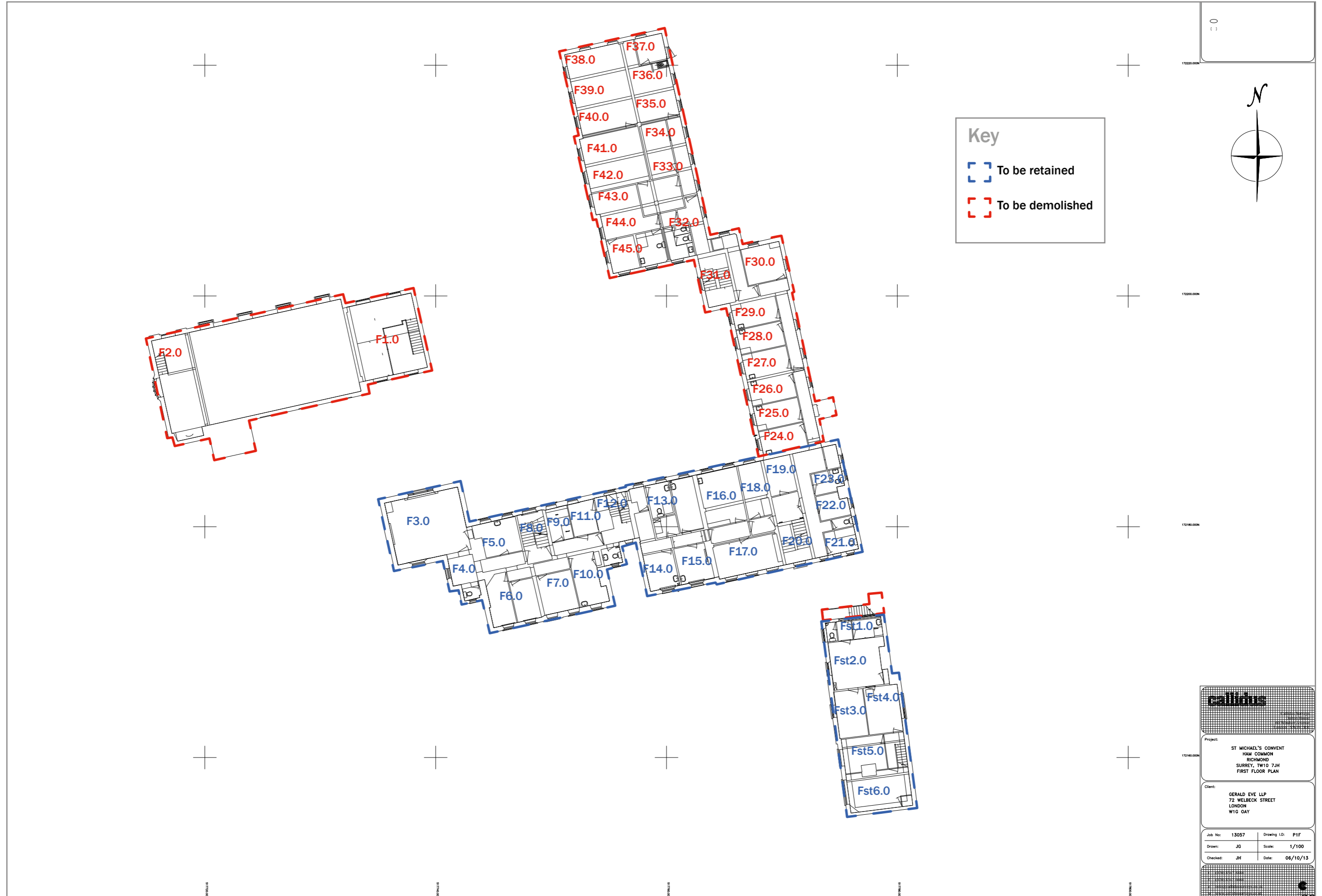


Key





FIRST FLOOR



Key

- To be retained
- To be demolished

callidus

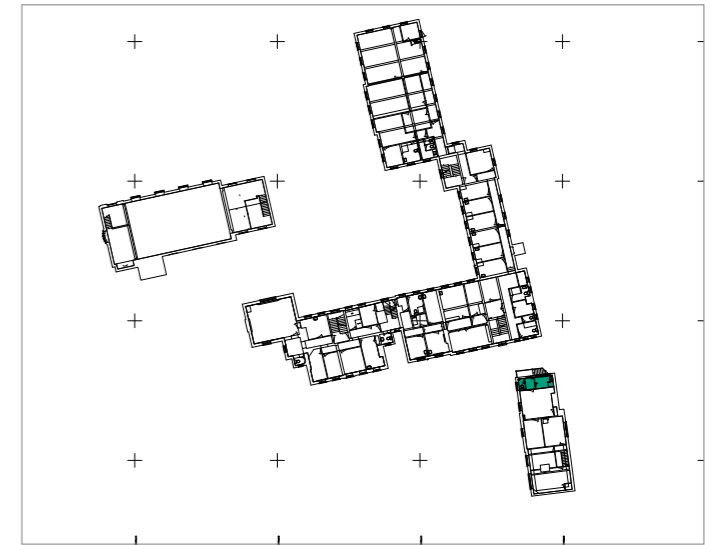
Project:
ST MICHAEL'S CONVENT
HAM COMMON
RICHMOND
SURREY, TW10 7JH
FIRST FLOOR PLAN

Client:
GERALD EVE LLP
72 WELBECK STREET
LONDON
W1G 0AY

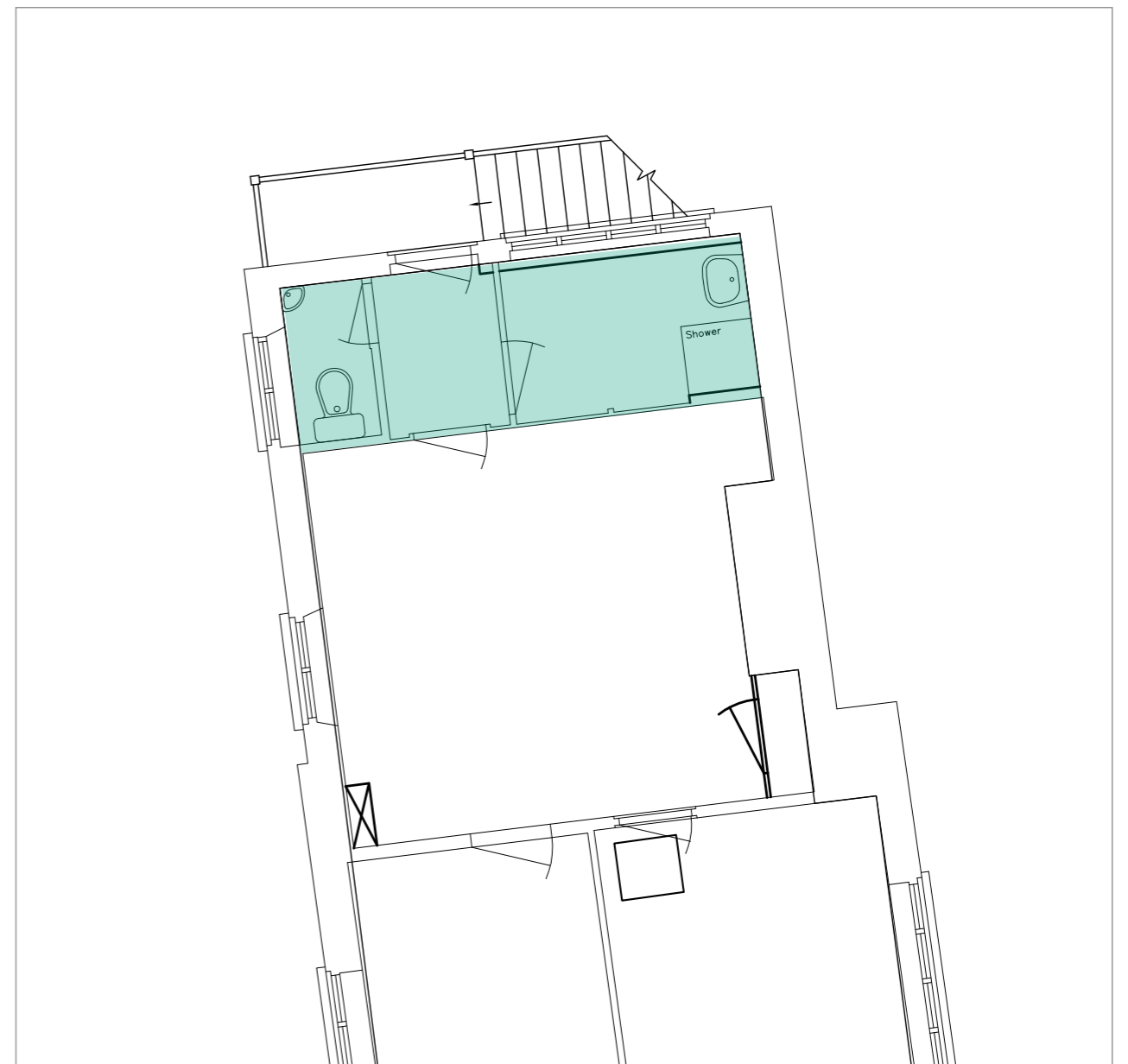
Job No: 13057	Drawing ID: P1F
Drawn: JG	Scale: 1/100
Checked: JH	Date: 06/10/13

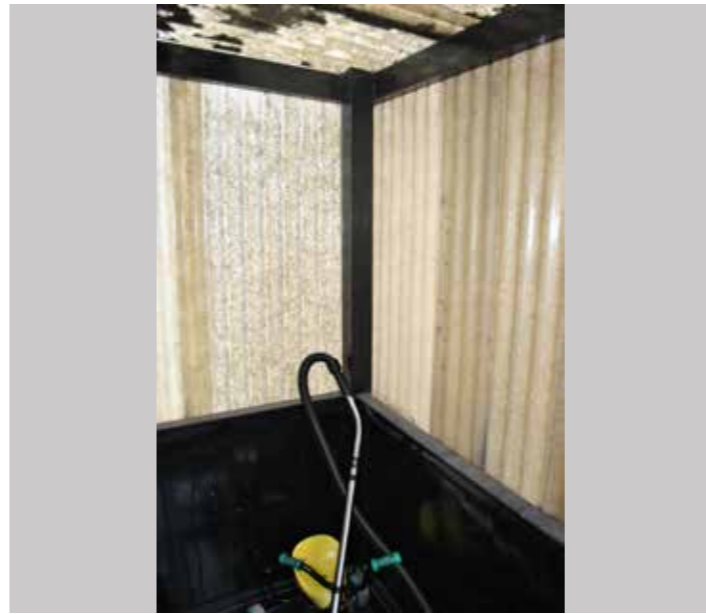
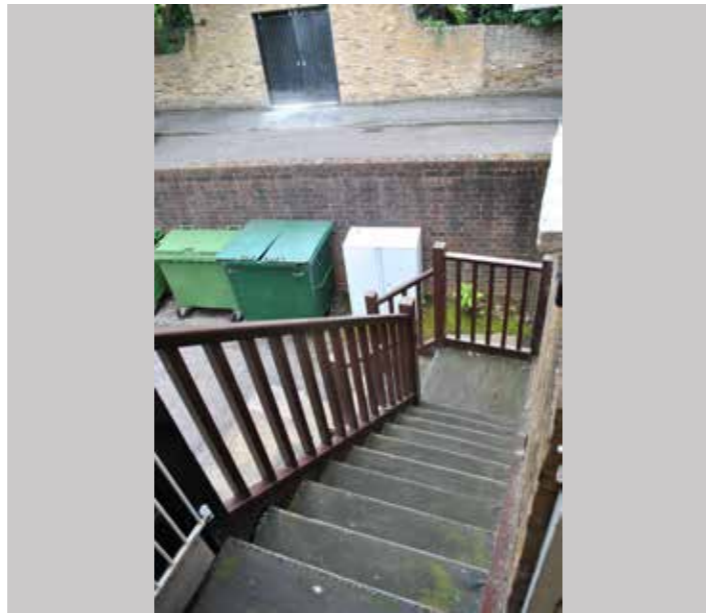
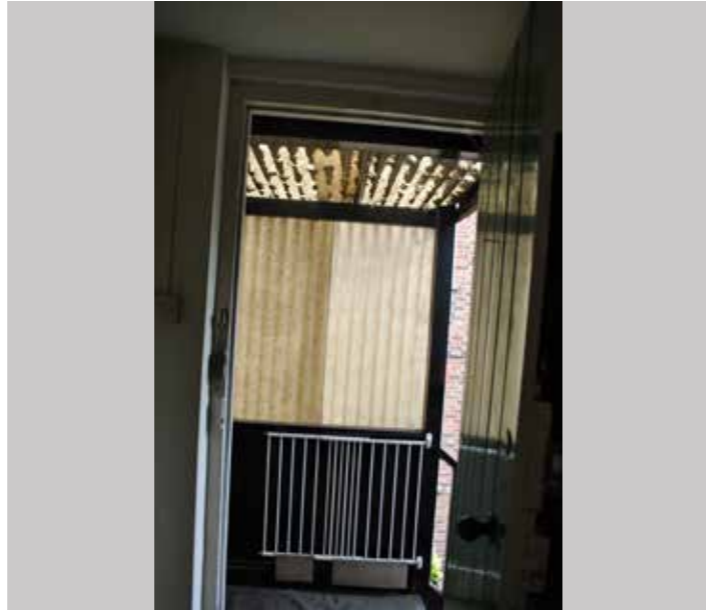
FIRST FLOOR - The Cottage		PRP
Project AA6250 St Michael's Convent, Ham		
Schedule No. 1	Revision: 1	Date: August 2016
Location Fst1.0		
Description <ul style="list-style-type: none"> • Demolition of external stairs at north end adjacent to Fst1.0 • Removal of sanitary fittings • Partition wall between Fst1.0 and Fst2.0 removed 		

Fst1.0



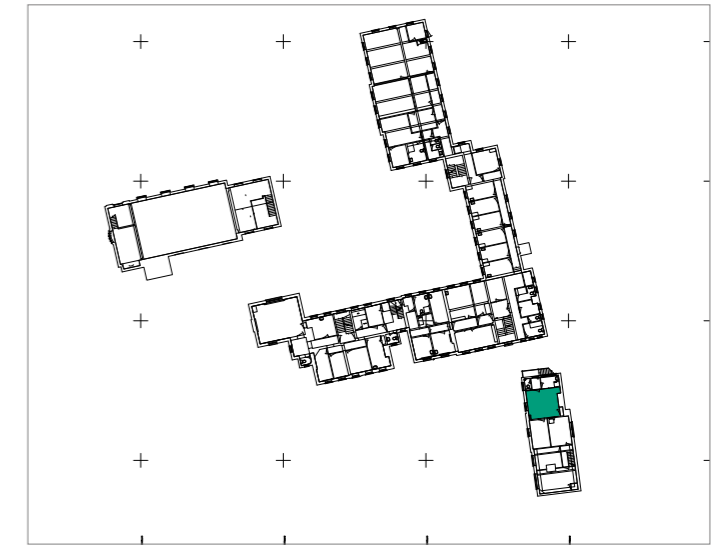
Key



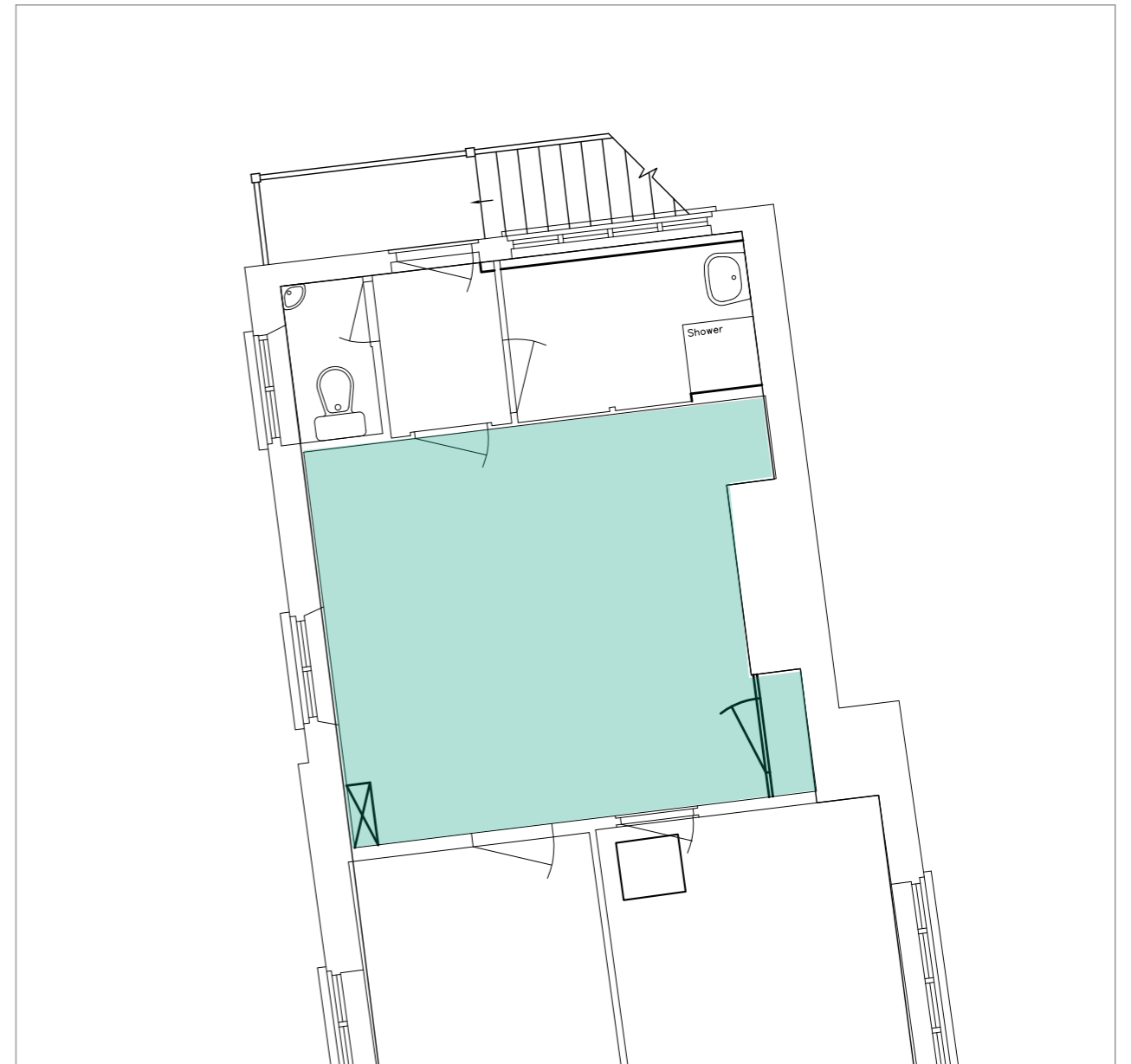


FIRST FLOOR - The Cottage		PRP	
Project AA6250 St Michael's Convent, Ham			
Schedule No. 1	Revision: 1	Date: August 2016	
Location Fst2.0			
Description <ul style="list-style-type: none"> • Partition wall between Fst1.0 and Fst2.0 removed • Internal partition walls between Fst 2.0, 3.0, 4.0, 5.0, 6.0 to be removed. New partitions inserted to provide bedroom and bathroom accommodation. 			

Fst2.0



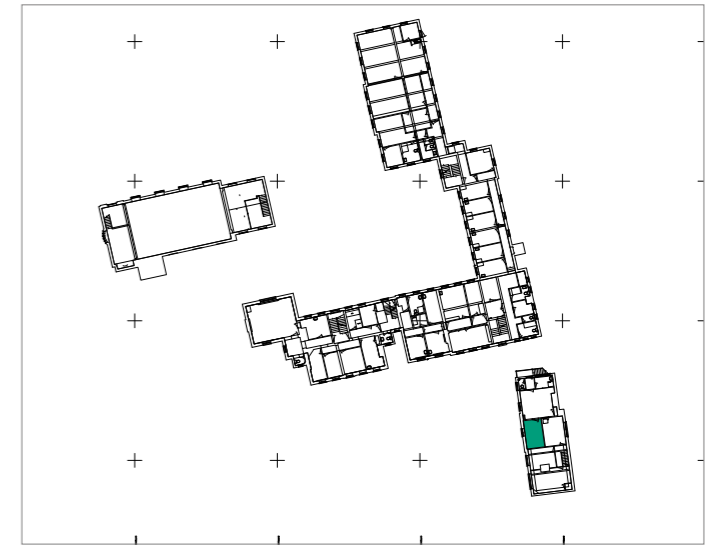
Key



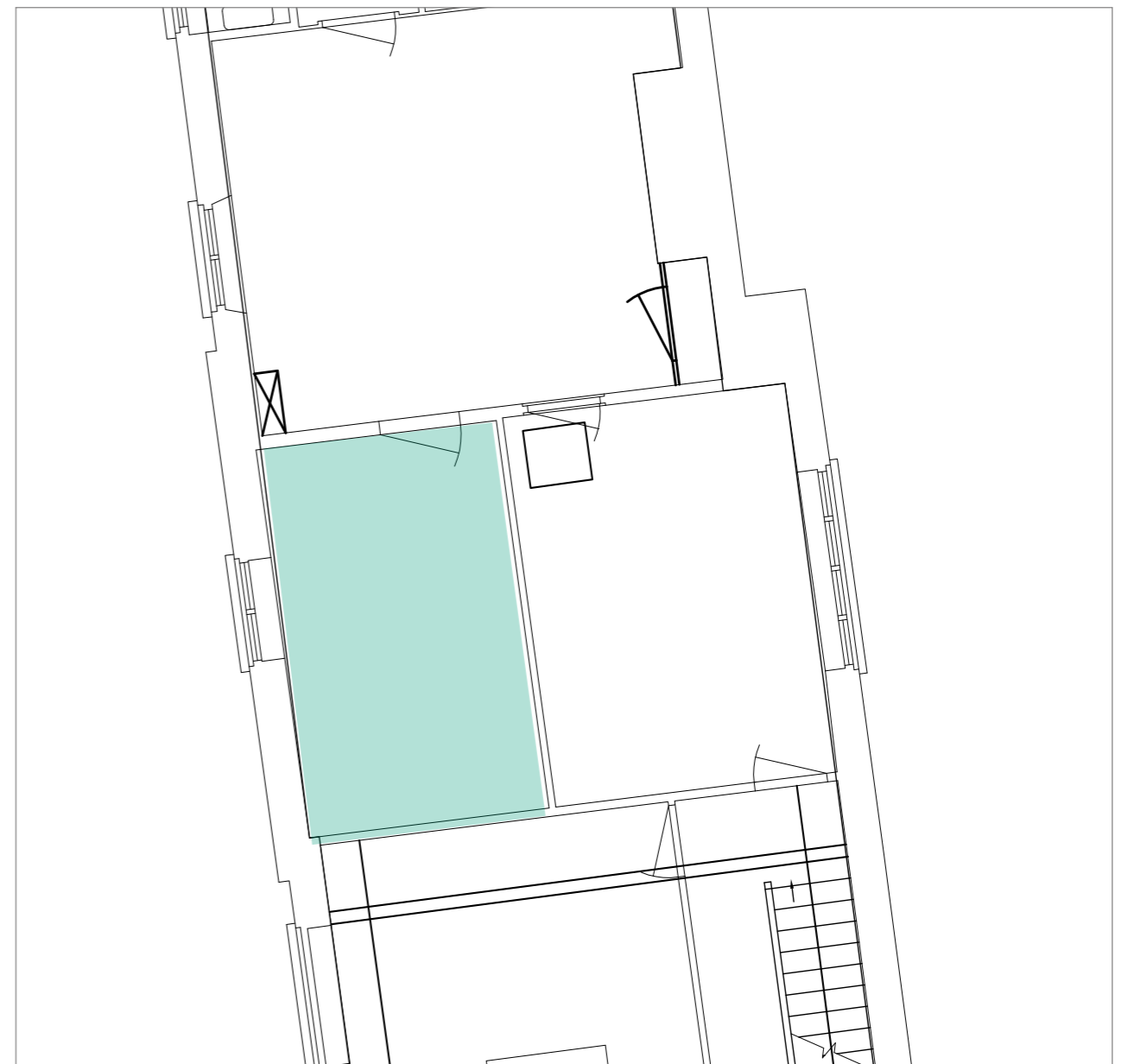


FIRST FLOOR - The Cottage		PRP
Project AA6250 St Michael's Convent, Ham		
Schedule No. 1	Revision: 1	Date: August 2016
Location Fst3.0		
Description <ul style="list-style-type: none">Internal partition walls between Fst 2.0, 3.0, 4.0, 5.0, 6.0 to be removed. New partitions inserted to provide bedroom and bathroom accommodation.		

Fst3.0



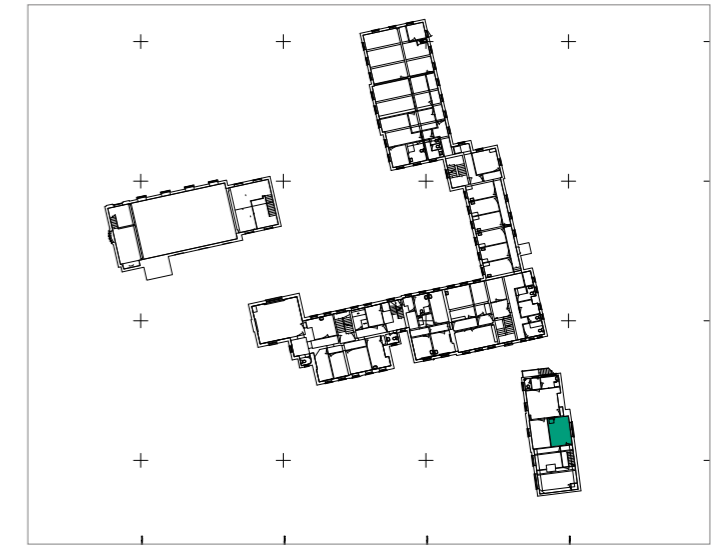
Key



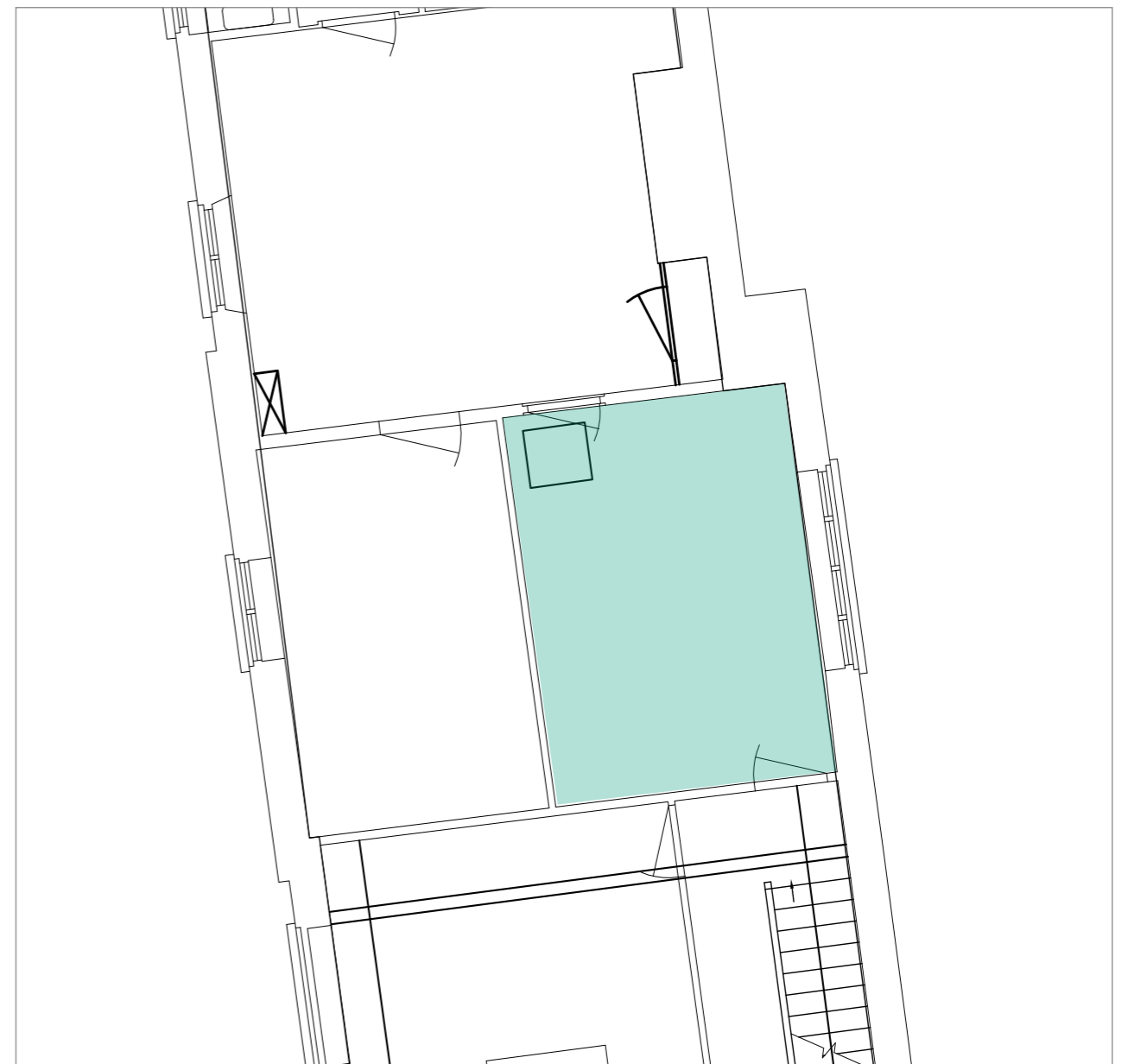


FIRST FLOOR - The Cottage		PRP	
Project AA6250 St Michael's Convent, Ham			
Schedule No. 1	Revision: 1	Date: August 2016	
Location Fst4.0			
<p>Description.</p> <ul style="list-style-type: none"> Internal partition walls between Fst 2.0, 3.0, 4.0, 5.0, 6.0 to be removed. New partitions inserted to provide bedroom and bathroom accommodation. Stairway inserted on East wall. 			

Fst4.0



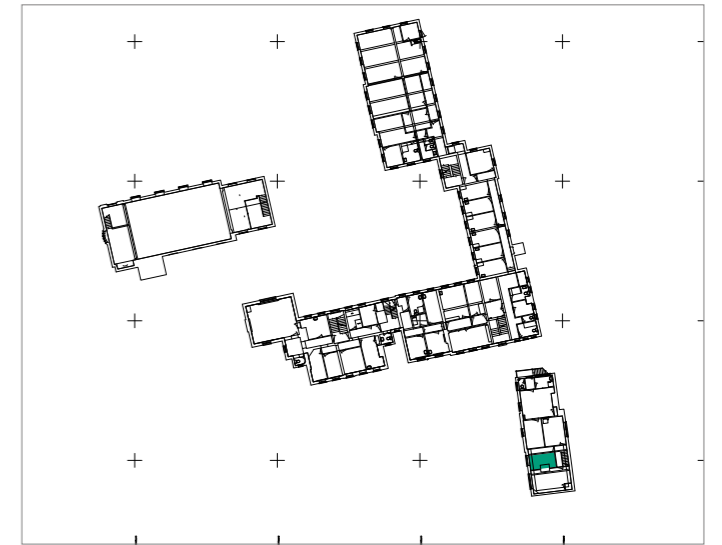
Key



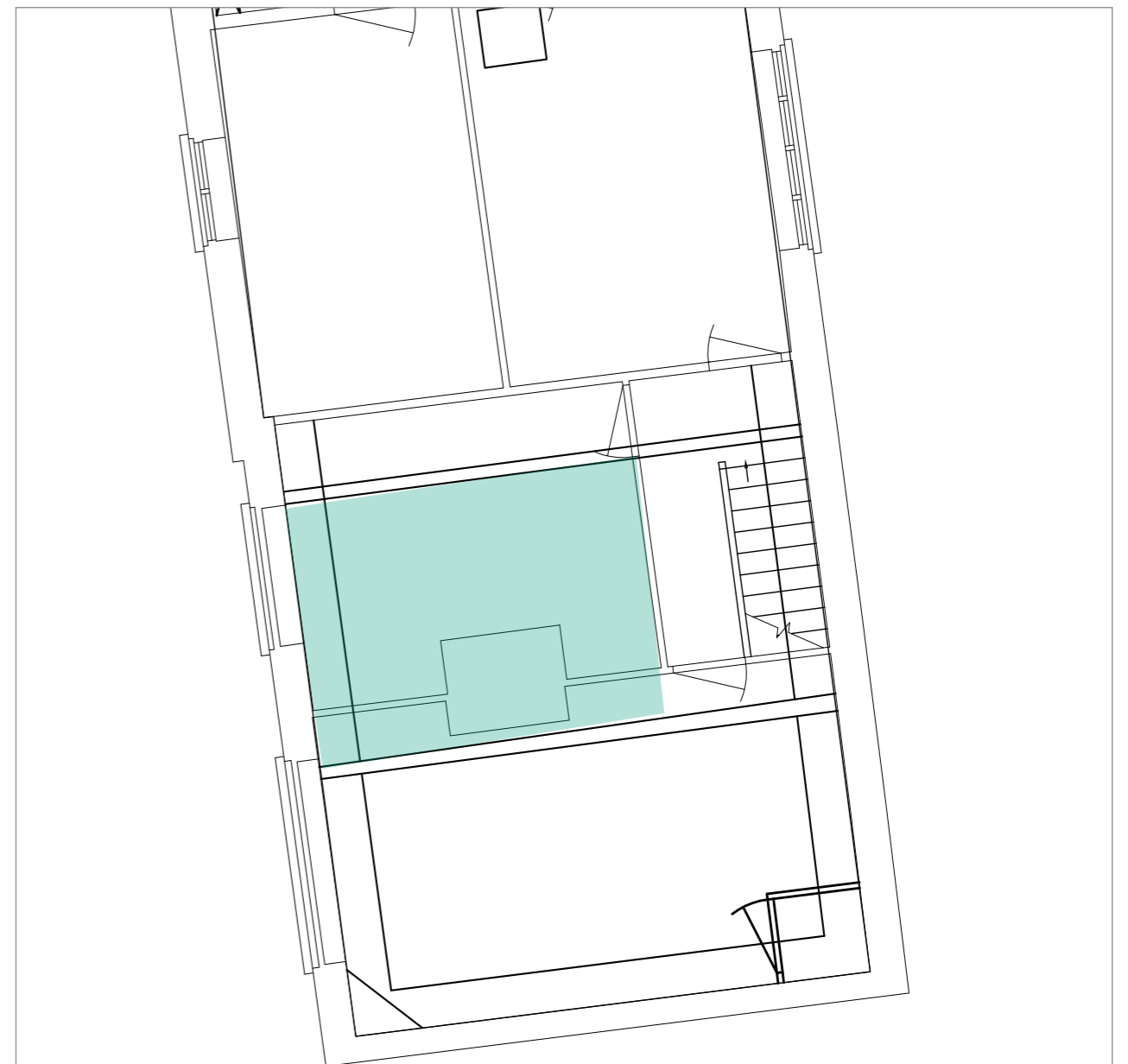


FIRST FLOOR - The Cottage		PRP	
Project AA6250 St Michael's Convent, Ham			
Schedule No. 1	Revision: 1	Date: August 2016	
Location Fst5.0			
<p>Description</p> <ul style="list-style-type: none"> • Internal partition walls between Fst 2.0, 3.0, 4.0, 5.0, 6.0 to be removed. New partitions inserted to provide bedroom and bathroom accommodation. • Central chimney breast retained. • Existing stairs removed and replaced. 			

Fst5.0



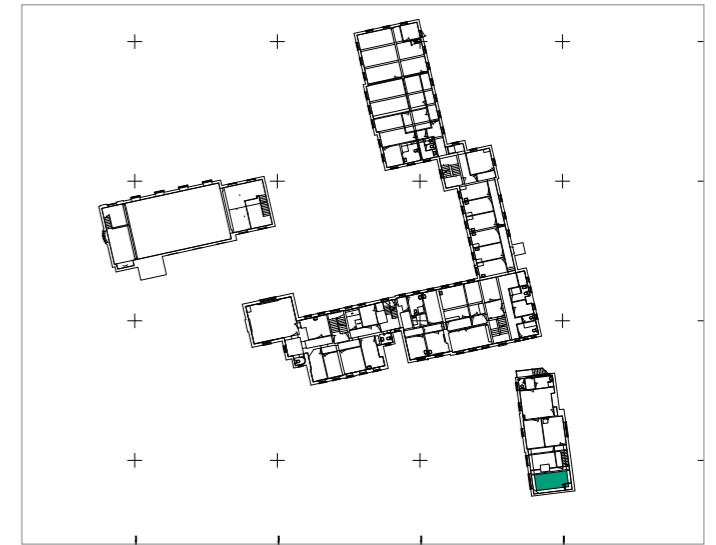
Key



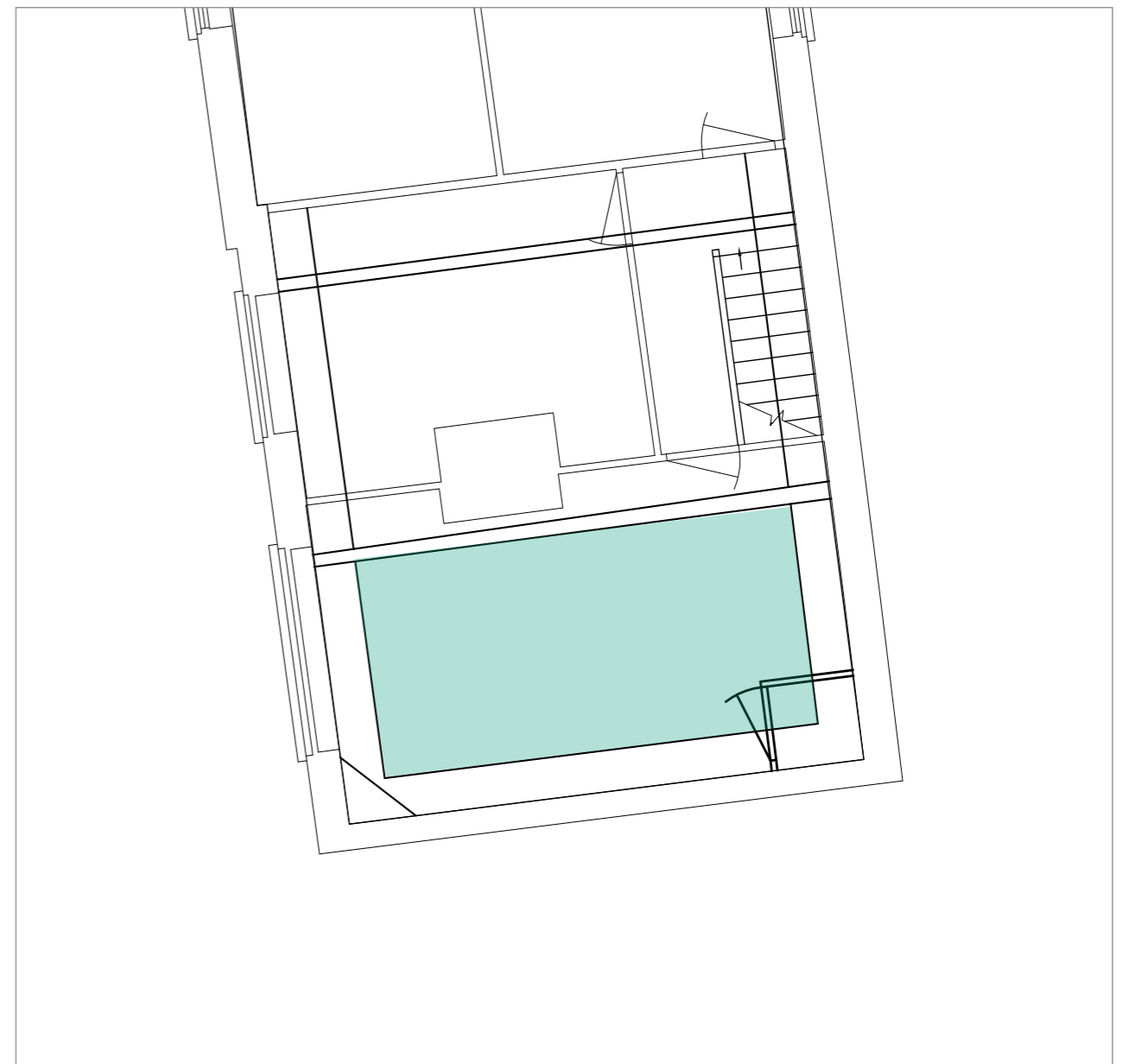


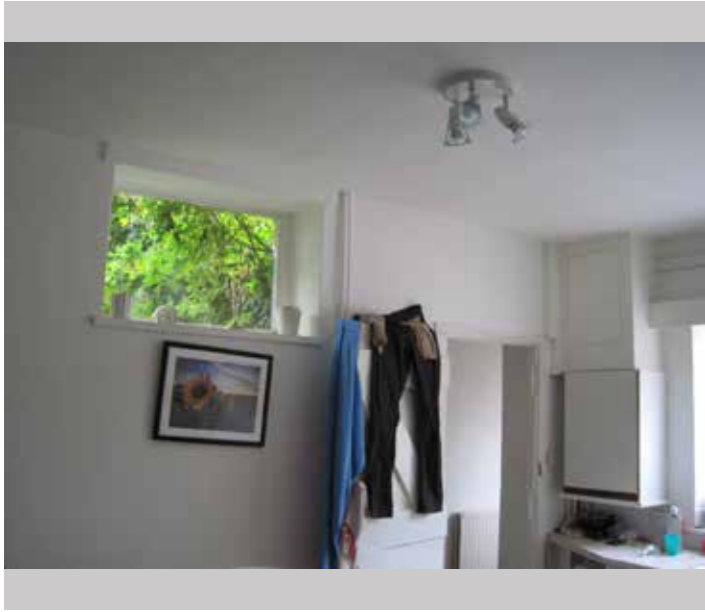
FIRST FLOOR - The Cottage		PRP	
Project AA6250 St Michael's Convent, Ham			
Schedule No. 1	Revision: 1	Date: August 2016	
Location Fst F6.0			
Description <ul style="list-style-type: none"> • Internal partition walls between Fst 2.0, 3.0, 4.0, 5.0, 6.0 to be removed. New partitions inserted to provide bedroom and bathroom accommodation. • Central chimney breast retained. • Existing stairs removed and replaced. • All plastic windows to be replaced with timber 			

Fst6.0



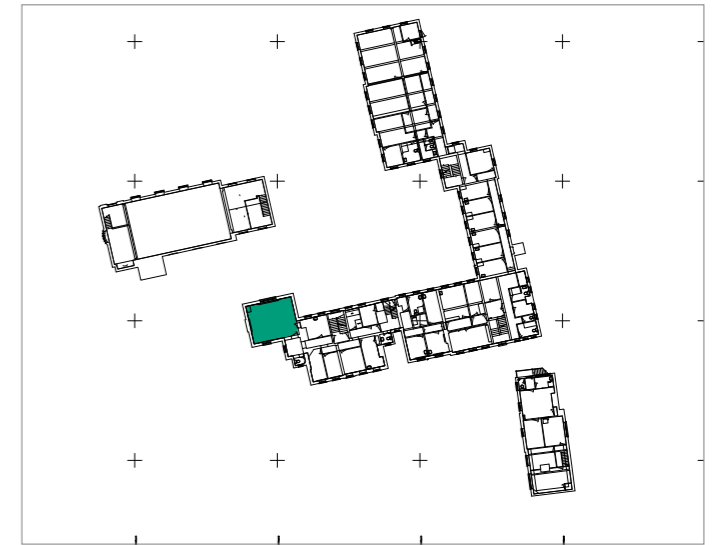
Key



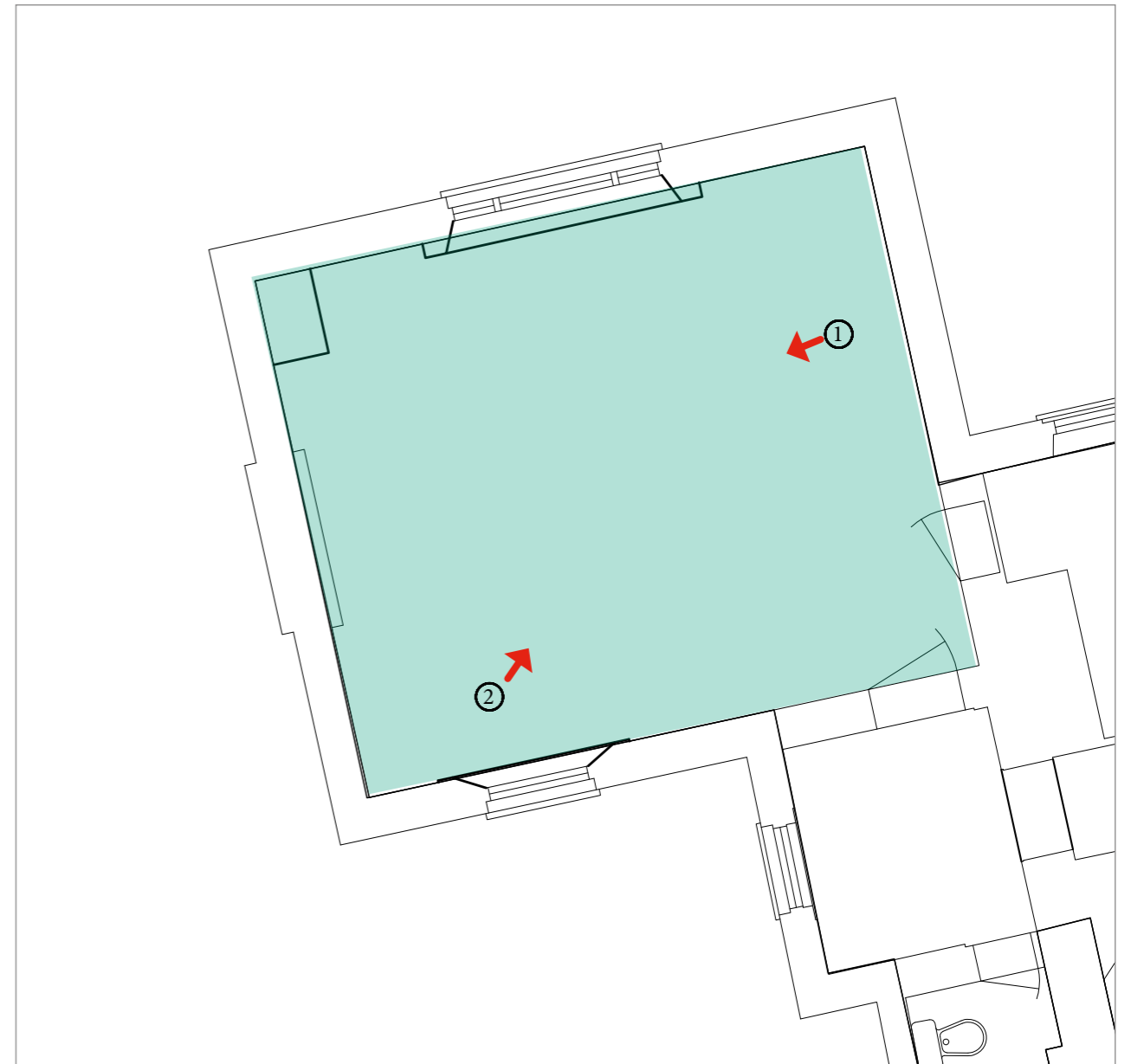


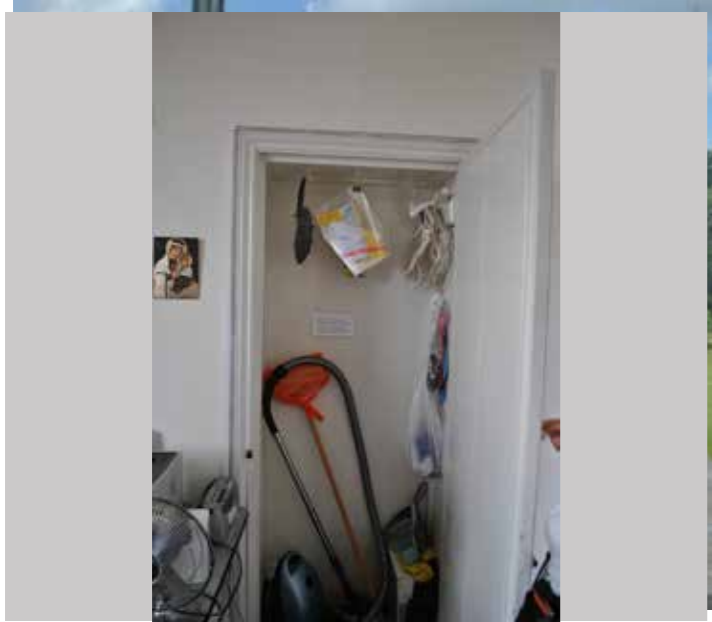
FIRST FLOOR North West block		
Project AA6250 St Michael's Convent, Ham		
Schedule No. 1	Revision: 1	Date: August 2016
Location F3.0		
<p>Description</p> <p>Room F3</p> <ul style="list-style-type: none"> • Architectural features retained (e.g. skirtings, window shutters, coving) • Opening to F5.0 closed and new wall inserted • No other alterations. 		

F3.0



Key





View 1



View 2