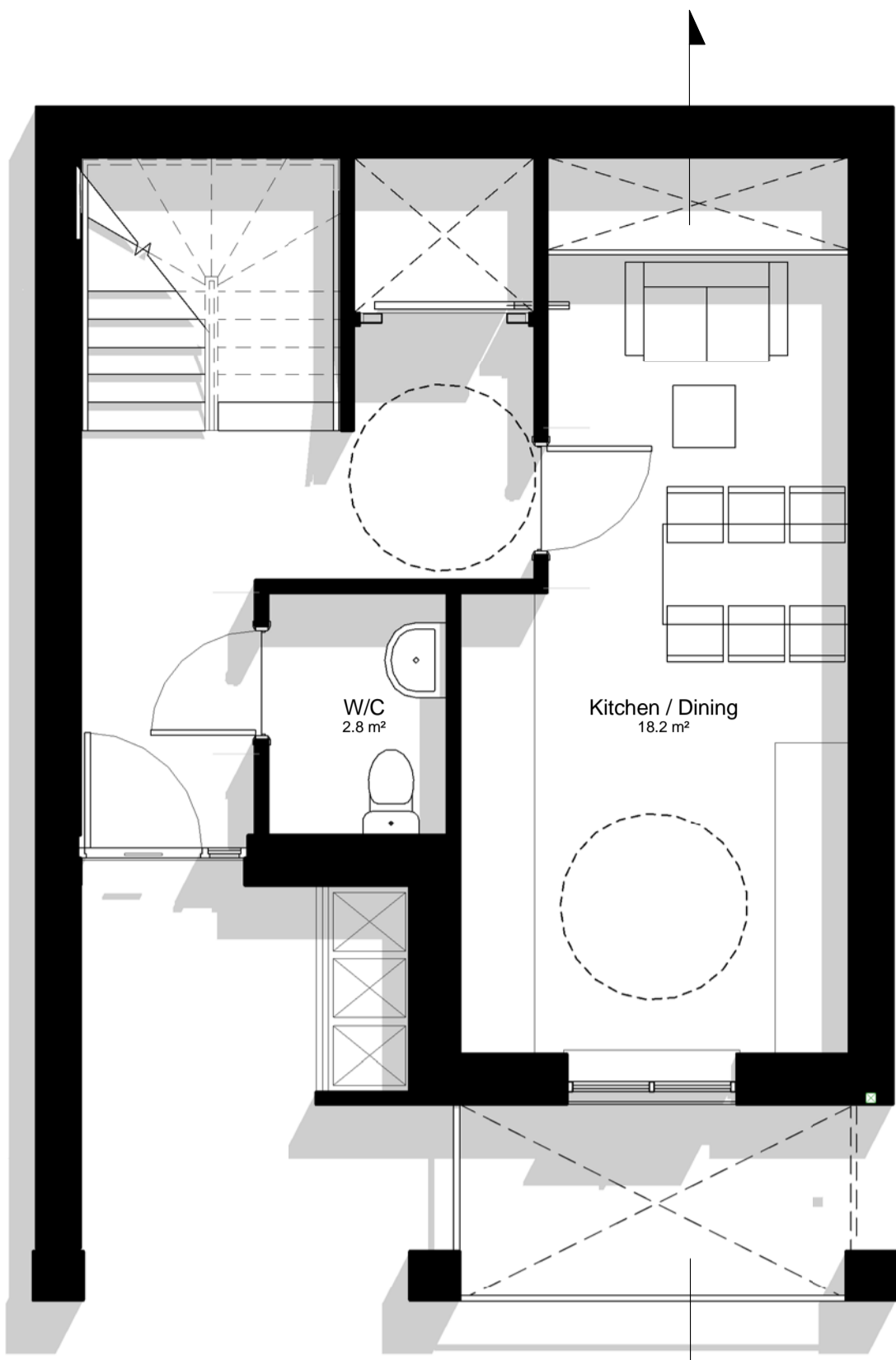
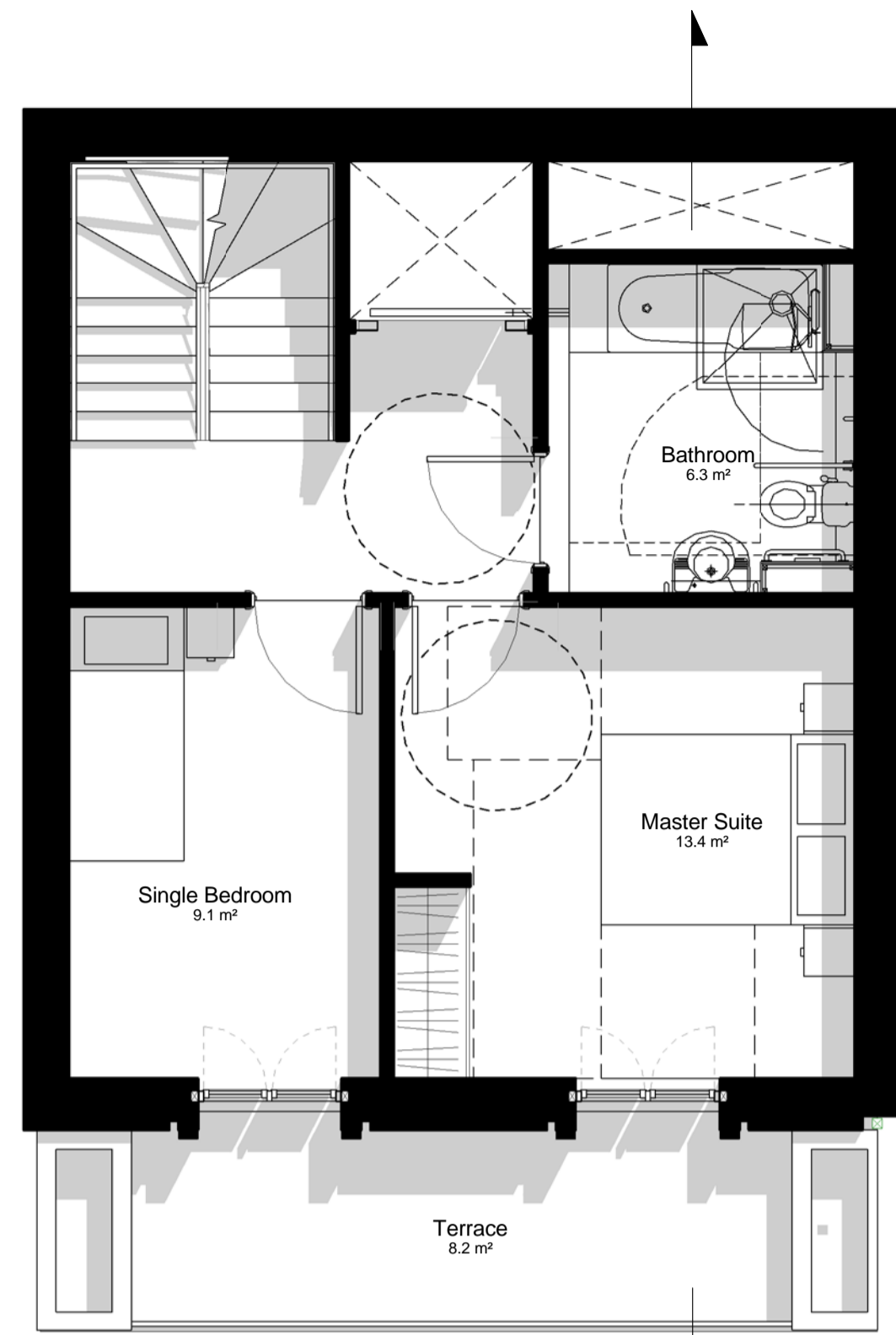


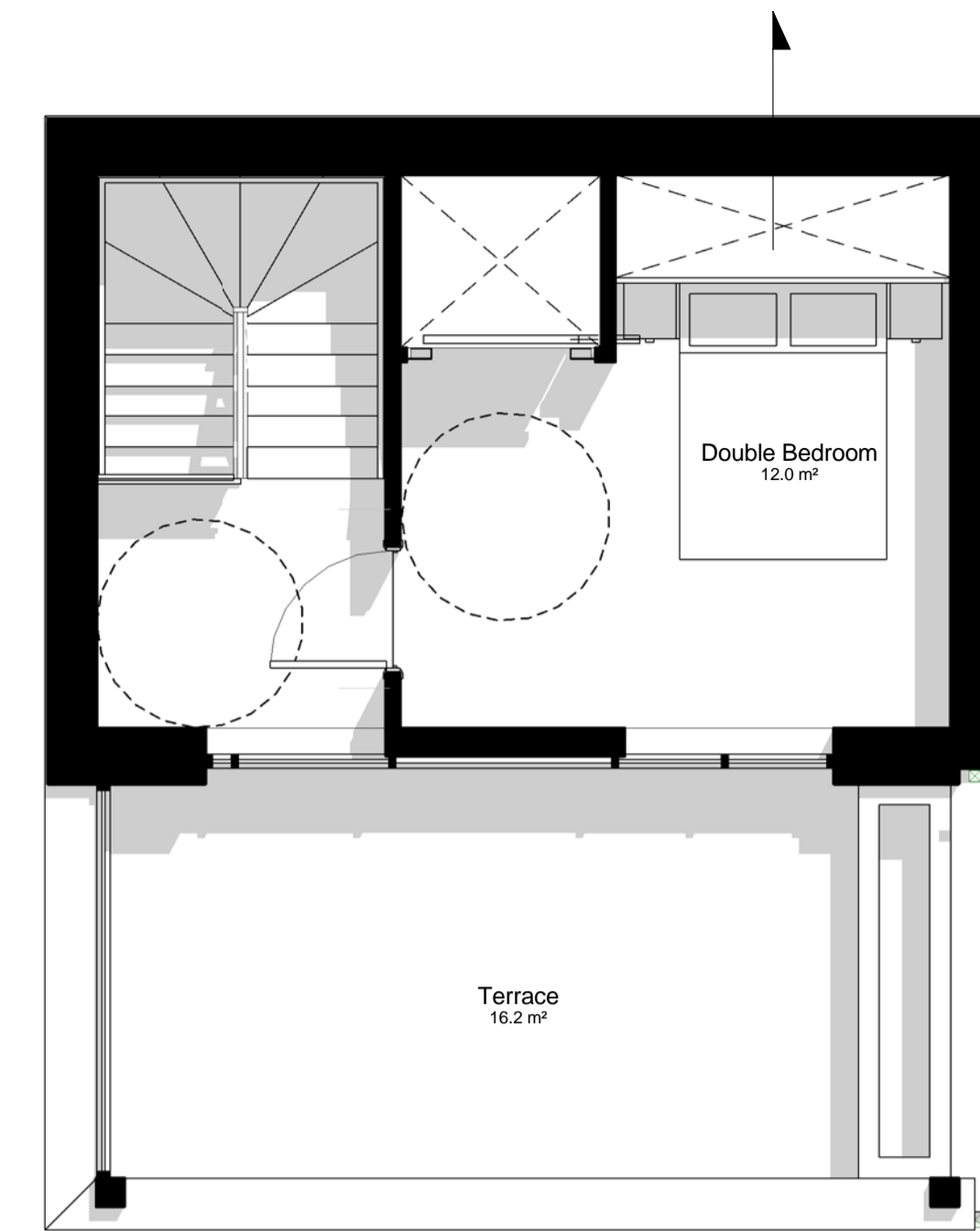
LEVEL -1



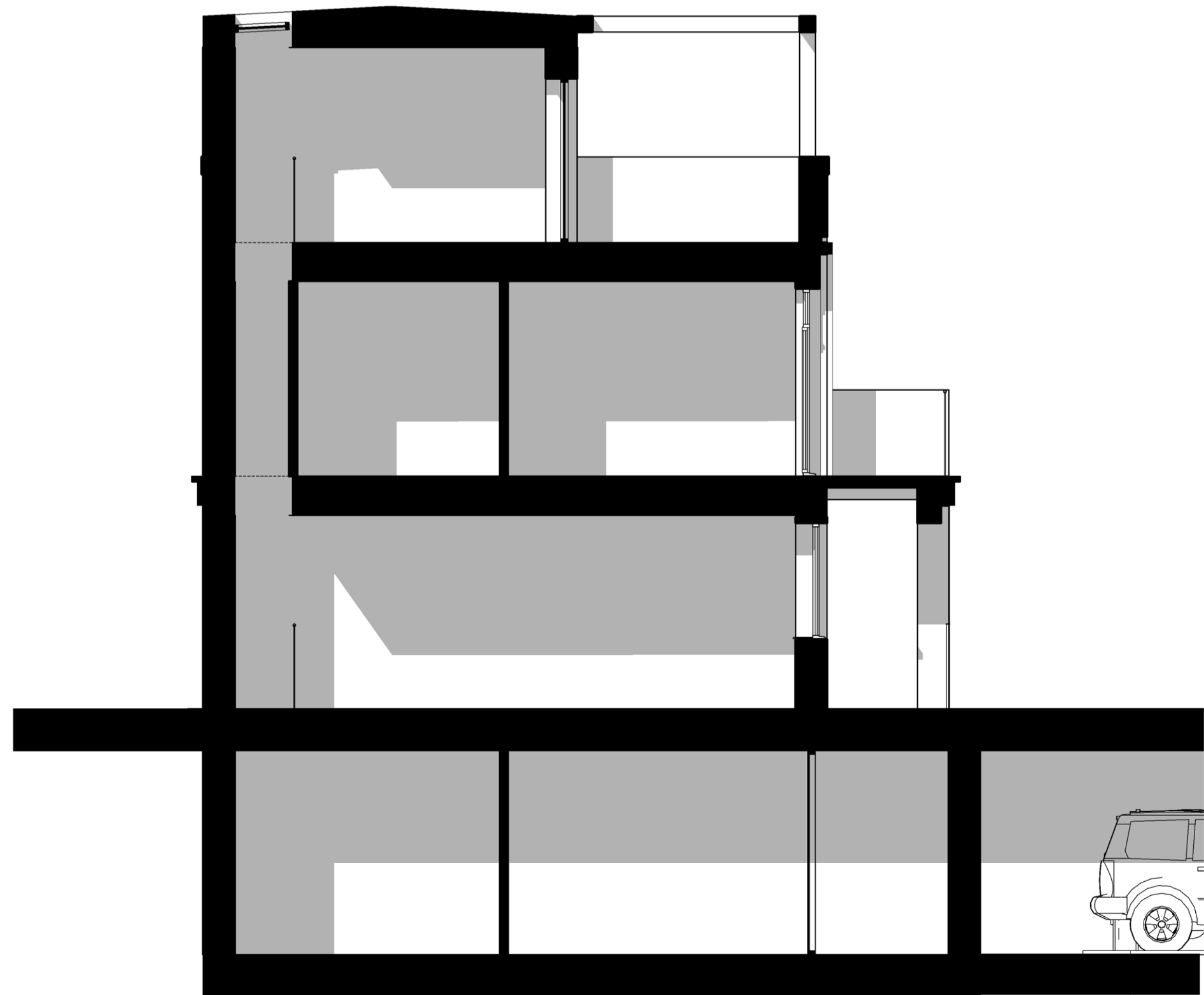
LEVEL 0



LEVEL 1



LEVEL 2

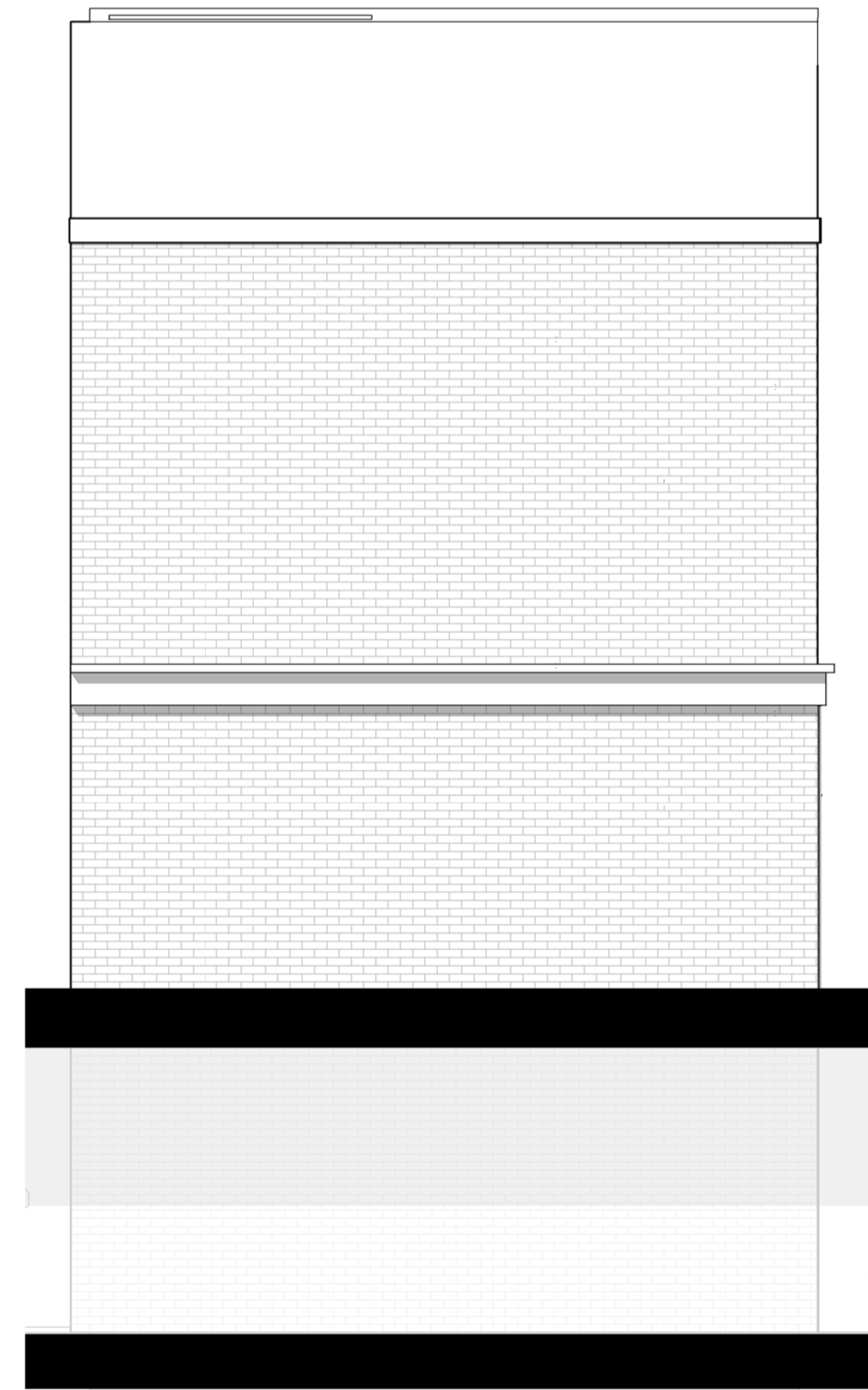


SECTION

DESIGNATED WCH PARKING BAY



WEST ELEVATION



EAST ELEVATION

notes

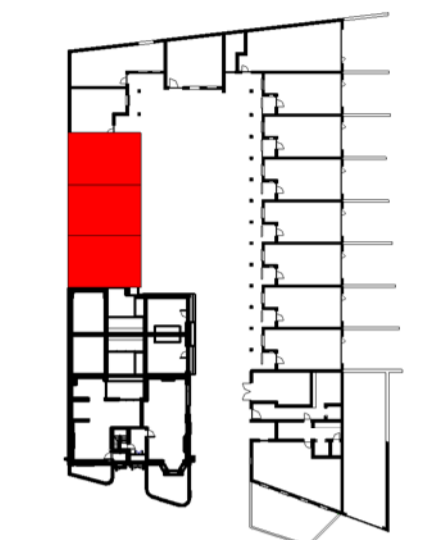
The contractor is responsible for checking dimensions, tolerances and references. Any discrepancy to be verified with the Architect before proceeding with the works.

Where an item is covered by drawings to different scales the larger scale drawing is to be worked to.

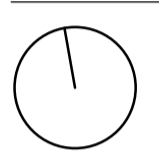
Do not scale drawing. Figured dimensions to be worked to in all cases.

CDM Regulations 2007

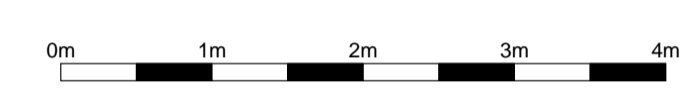
All current drawings and specifications for the project must be read in conjunction with the Designer's Hazard and Environment Assessment Record.



DWELLING TYPE KEY PLAN



147.4 m²
1586.6 ft²



28.10.2016 B Massing amended following planners comments. IFS
20.06.2016 A Design development following planners comments. IFS

date	rev	revision/author/checker
------	-----	-------------------------

purpose of issue
PLANNING

project
Hampton Village

drawing
House Type C1 - WCH - 3B5P

drawing no	rev
AA5130 /2200	B

drawn	checked	date
HS	RGH	15/02/2016

PRP Architects ©
10 Lindsey Street
Smithfield
London EC1A 9HP
T +44 (0)20 7653 1200
F +44 (0)20 7653 1201
ton.prp@prparchitects.co.uk

