

TWICKENHAM RIVERSIDE

PHOTOMONTAGE VIEWS & PERSPECTIVES

LONDON BOROUGH OF
RICHMOND UPON THAMES
28 FEB 2002
PLANNING

CONTENTS:

1. Photomontages: Views 1 – 15
2. Perspective View from the Embankment Looking West
3. Perspective View from the Embankment – Massing Comparison with Existing Buildings
4. Perspective View from the Embankment Shown at the Public Exhibition January 2001
5. Photographs of the Development Site from Ham



VIEW 1



VIEW 2



VIEW 3



VIEW 4



VIEW 5



VIEW 6



VIEW 7



VIEW 8



VIEW 9



VIEW 10



VIEW 11



VIEW 12



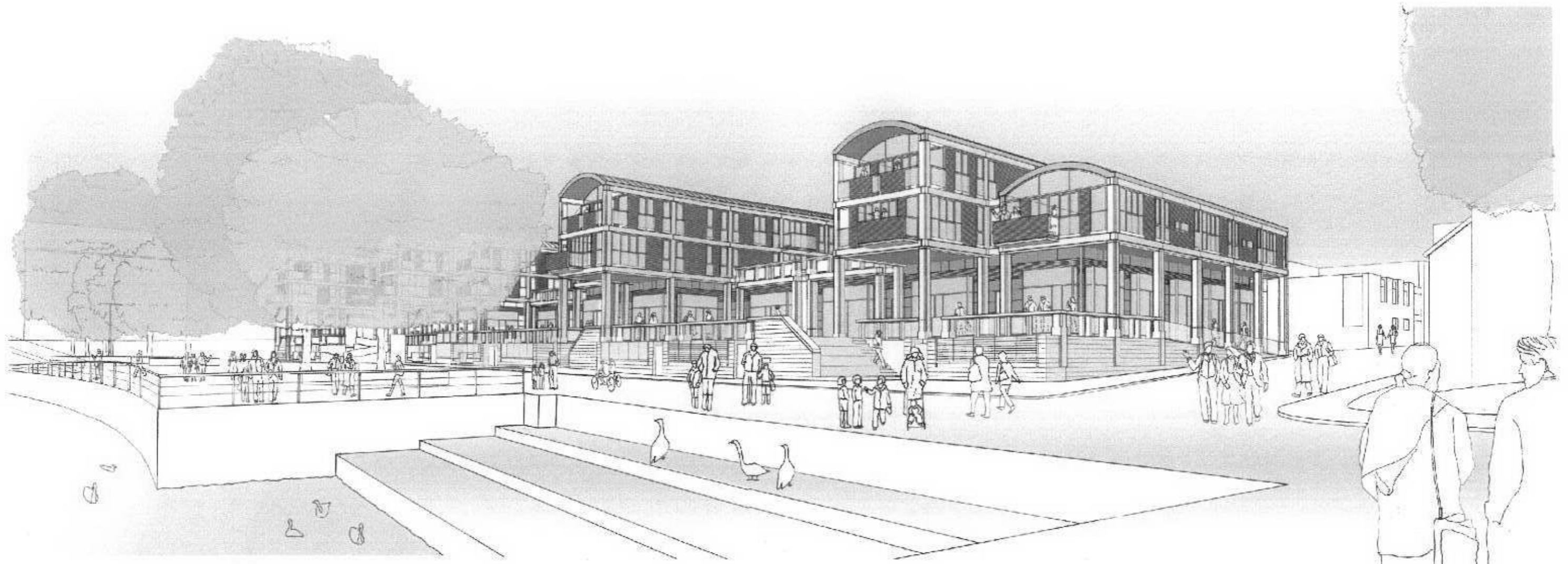
VIEW 13



VIEW 14



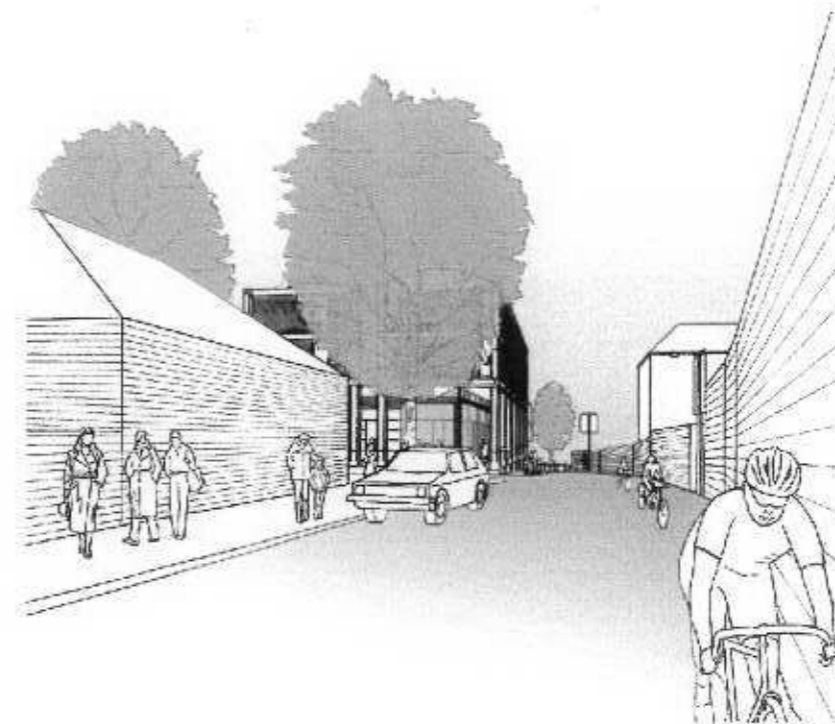
VIEW 15



View from the Embankment looking north-west



View towards the Embankment down Water Lane



View towards the Embankment down Wharf Lane

TWICKENHAM RIVERSIDE

Perspectives Sheet 1

9 HENAGE STREET, SPIFAELDS, LONDON, E1 5U

Project Ref: 0010/2140

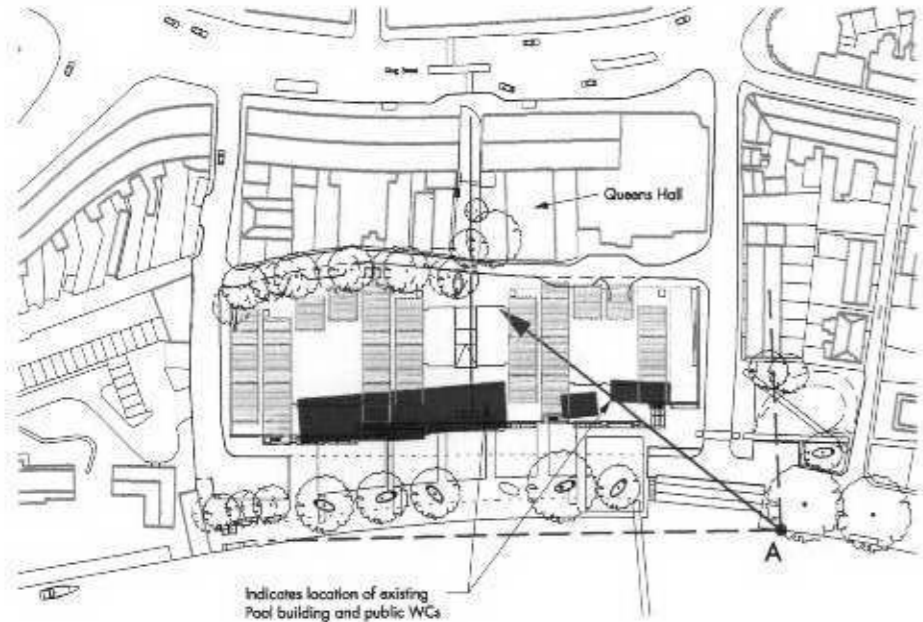
Scale: -

Rev: 001

Date: 07/09/2001

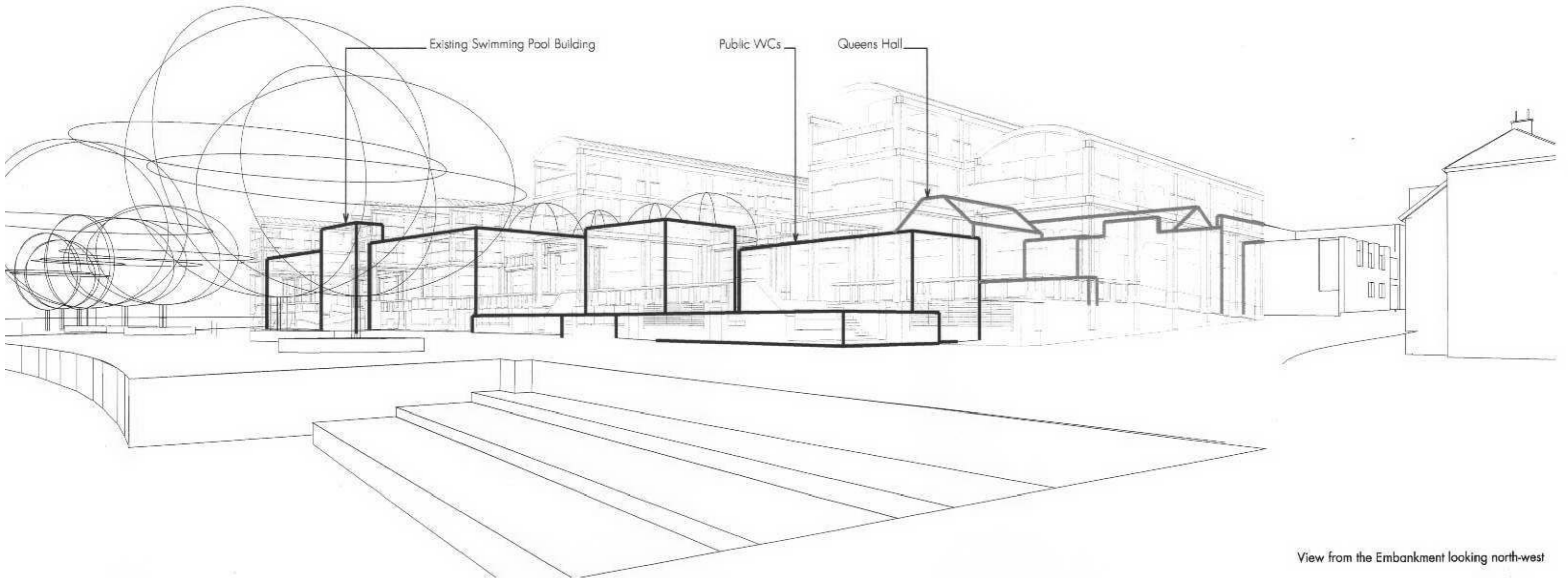
020 7577 9262

MCCORMAC
JAMIESON
PRICHARD



Eye Level at view point A: +5.86 AOD
 View angle: 88°
 Camera focal length: 22mm

Site Plan showing viewpoint scale 1:2000



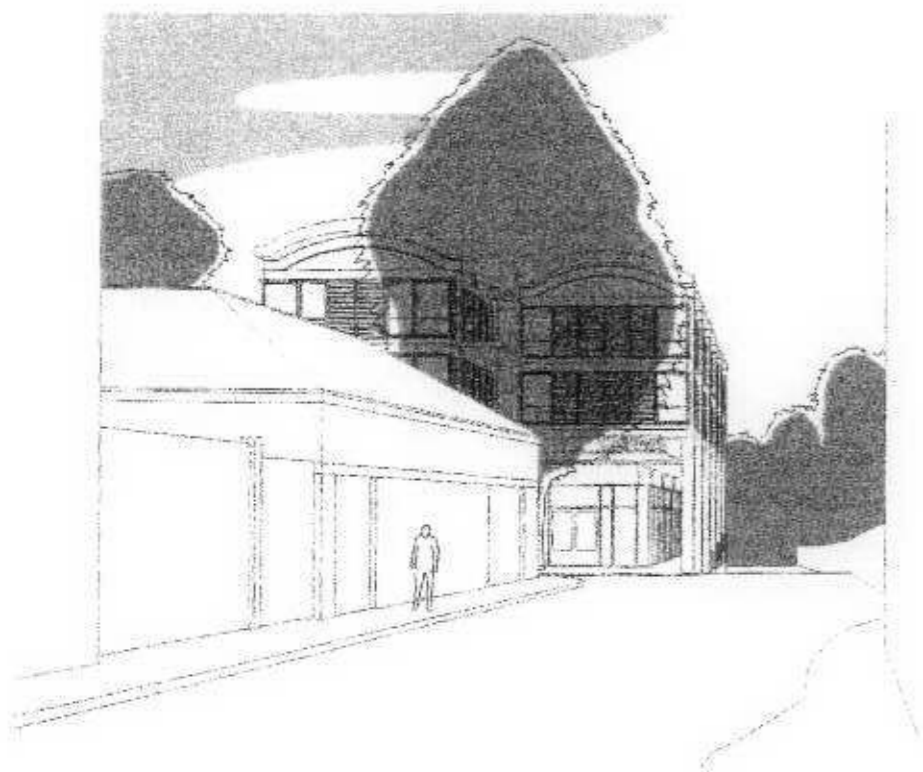
View from the Embankment looking north-west

Notes	Description	Notes

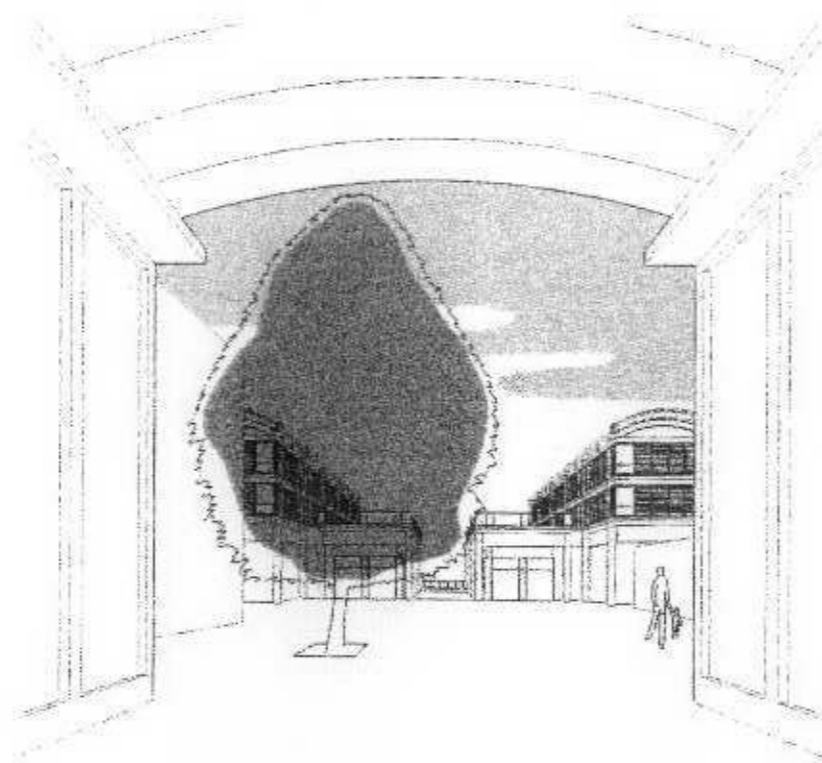
Twickenham Riverside: Exhibition January 2001 - Perspectives



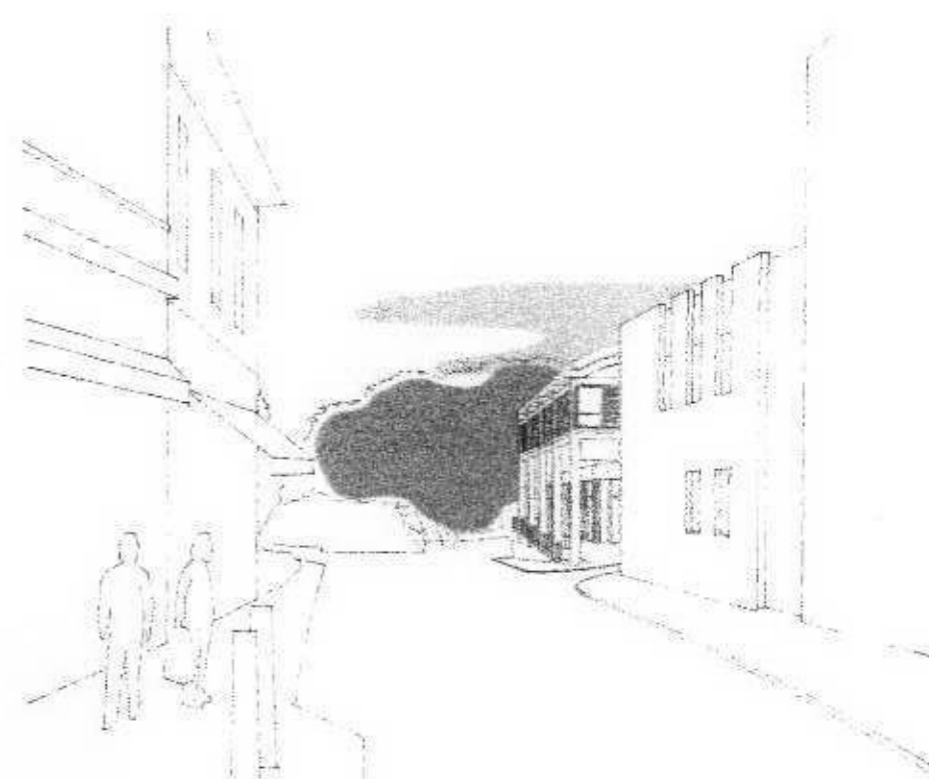
View from The Embankment looking west



View of Wharf Lane looking south



View of New Lane looking south



View of Water Lane looking south

EXHIBITION JANUARY 2001

PHOTOGRAPHS OF THE SITE FROM HAM

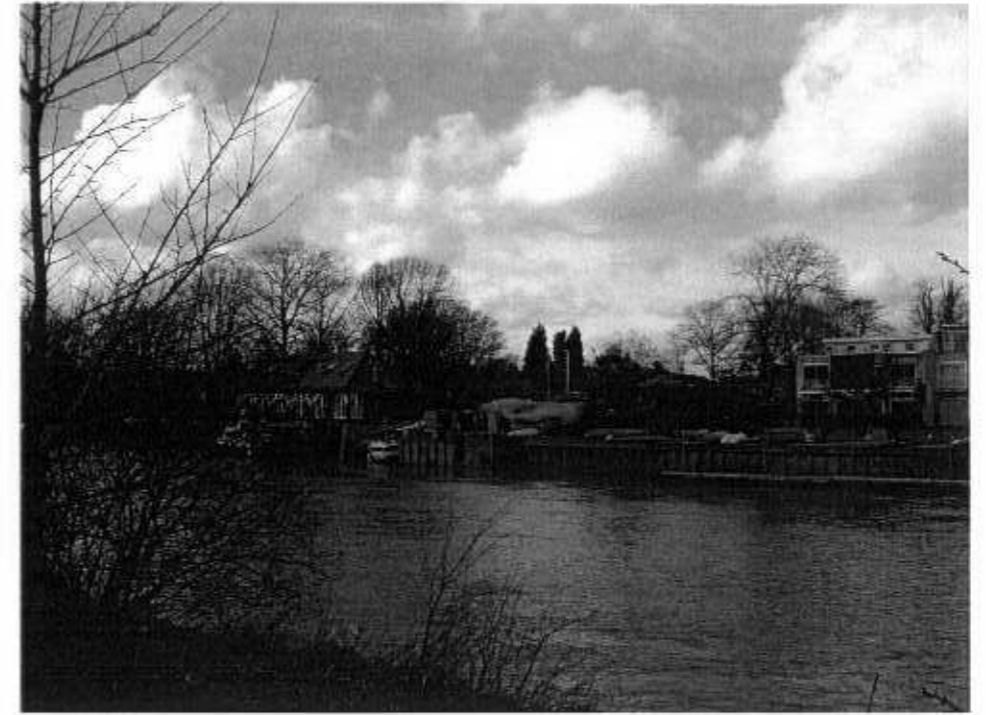
VIEW POINTS ARE INDICATED ON THE LOCATION PLAN



View 16



View 17



View 18



View 19



View 20



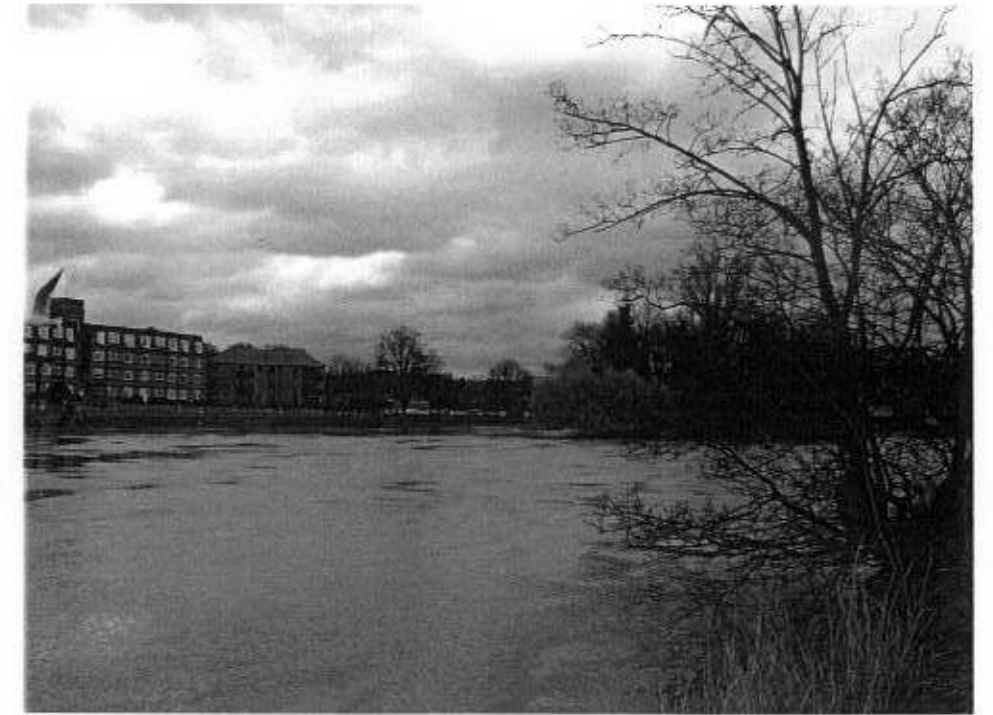
View 21



View 22



View 23



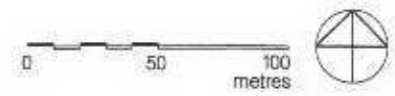
View 24



View 25



View 26



LOCATION PLAN SHOWING VIEWPOINTS 16 TO 26 (FOLLOWING)

01/02/02	DM	Issued for Printing

FOR PLANNING

TWICKENHAM RIVERSIDE

DRAWING NO:
SCALE: NTS
REVISED:
DATE: 30/01/02

9 HENEAGE STREET, SPITALFIELDS, LONDON, E1 5LJ 020 7577 9262



NOTE: DO NOT SCALE DRAWINGS. ALL DIMENSIONS TO BE CHECKED ON SITE. ERRORS TO BE REPORTED IMMEDIATELY TO THE ARCHITECT.