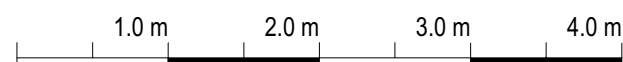
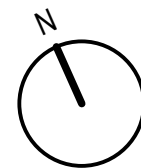


PROPOSED WHEELCHAIR ADAPTABLE UNIT TYPE A002 & A104
2 BED 3 PERSON APARTMENT

Planning Application



Rev:	Date:	Description:	Project:	63-71 High Street, Hampton Hill			
*	08.11.2016	Issued for information	Dwg no:	1525 / PA.20			
*	29.11.2016	Issued for Planning	Drawing:	Proposed Wheelchair Adaptable Unit Type A002 & A104			
<small>NOTES: Do not scale from this drawing. All dimensions in millimeters. All dimensions to be checked on site. All omissions and discrepancies to be reported to the architect immediately. This drawing is © 3s Architects and Designers. Use of these drawings must be authorised by 3s.</small>			Date:	October 2016	C	D	3s
			Scale:	1:50 @ A3	-	3s	Rev: *
					3s architects and designers T +44 (0)20 8332 99 -66 F -91 W www.3s-ad.com E info@3s-ad.com 17A Princes Road, Richmond upon Thames, Surrey TW10 6DQ		