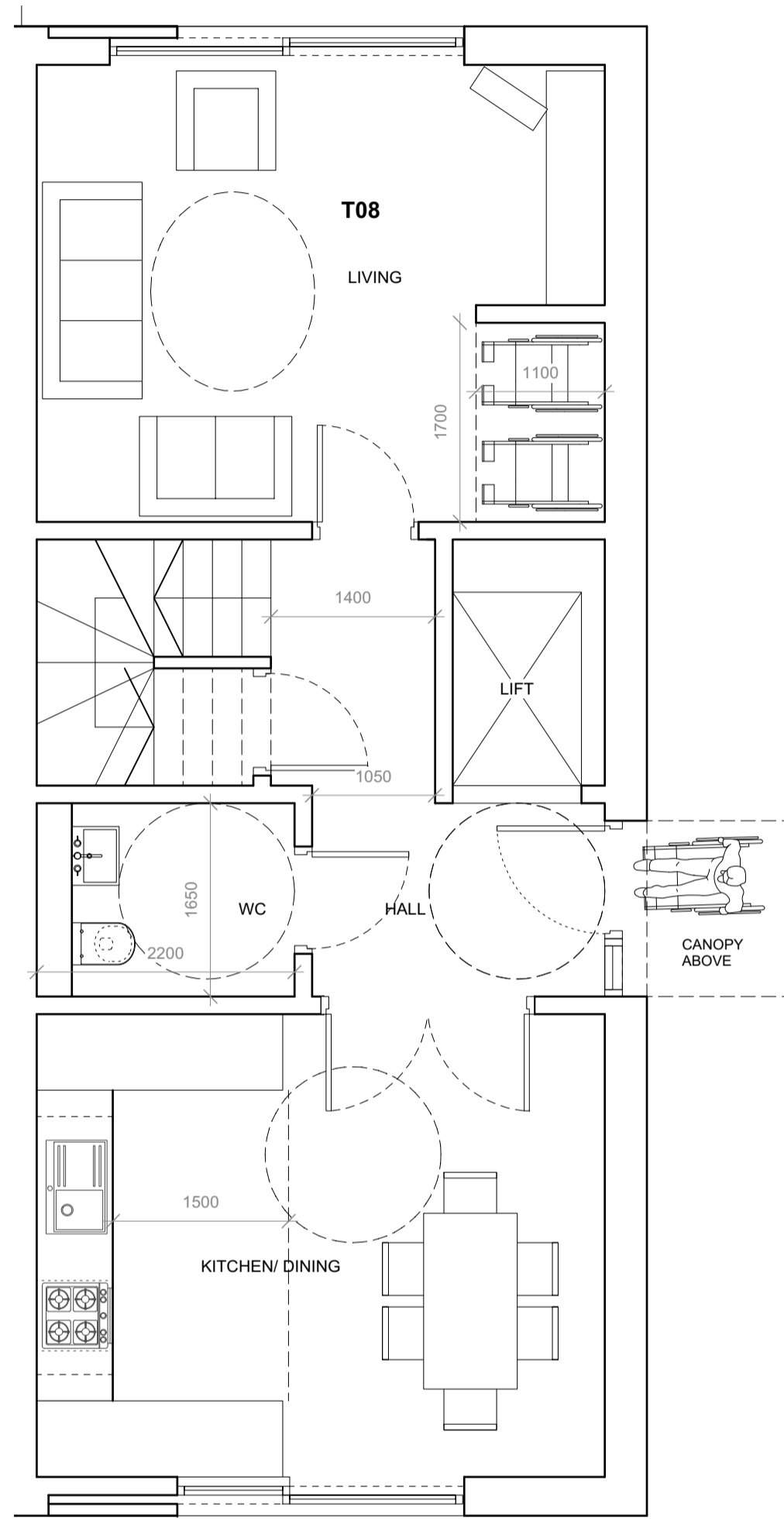
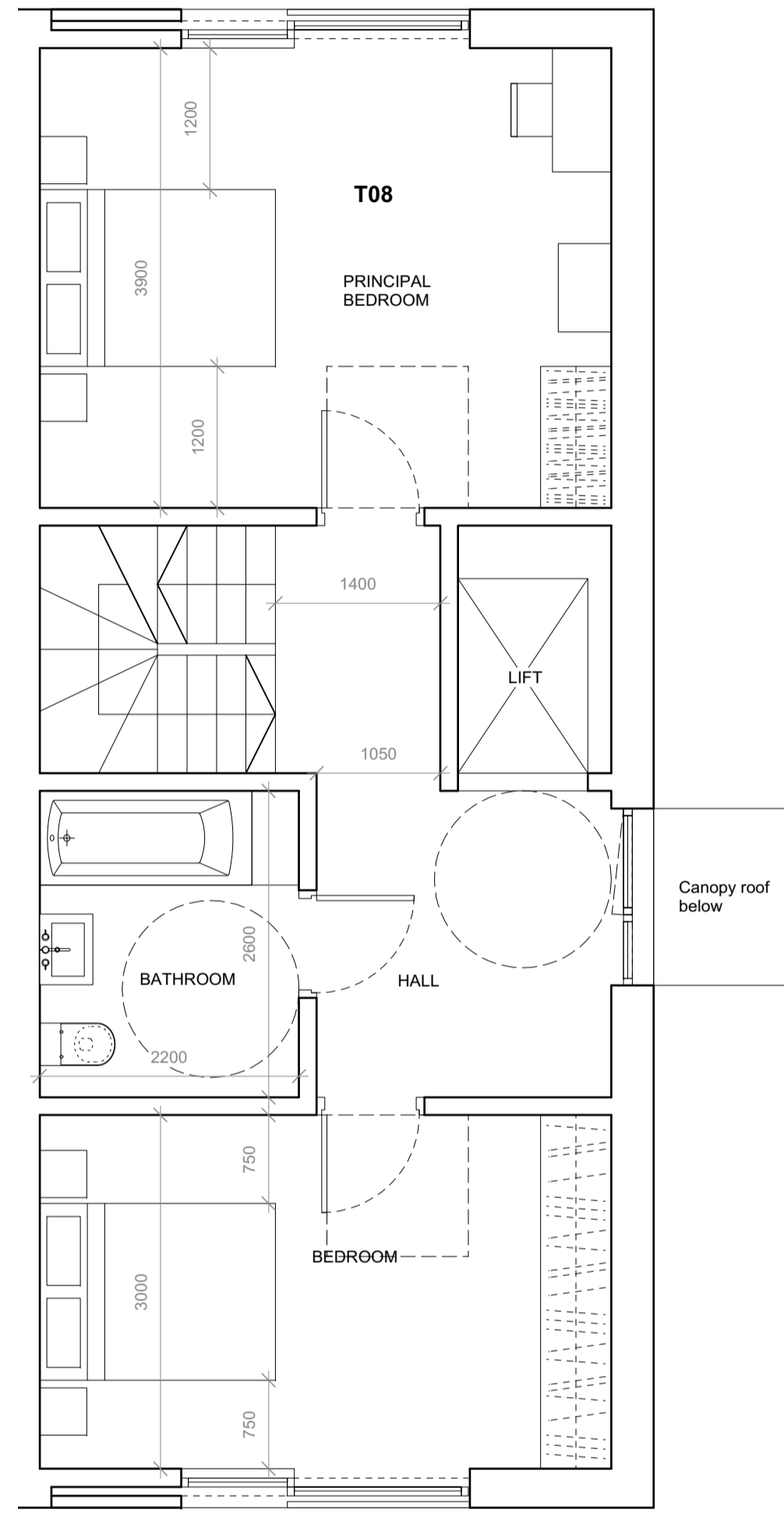


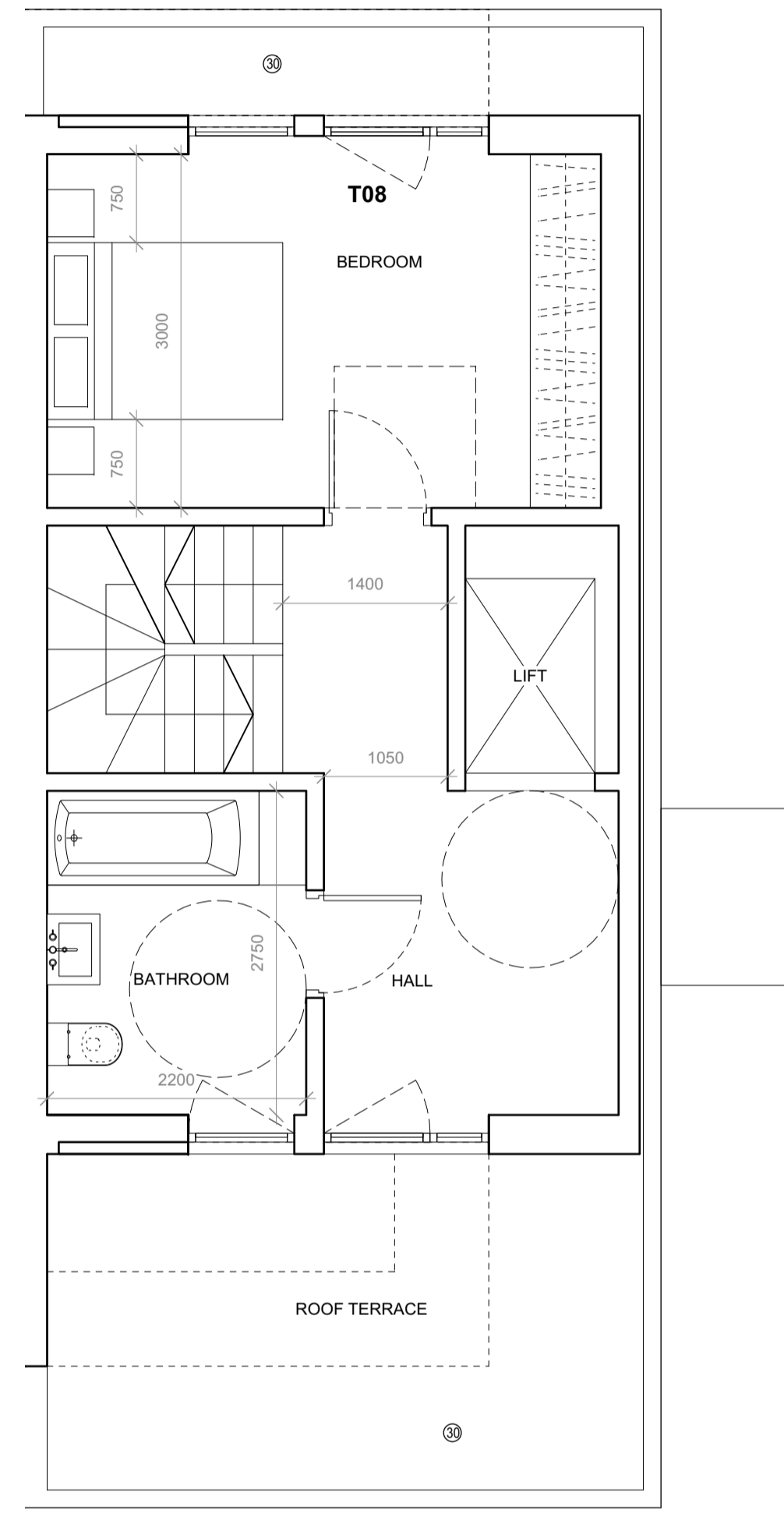
BASEMENT PLAN



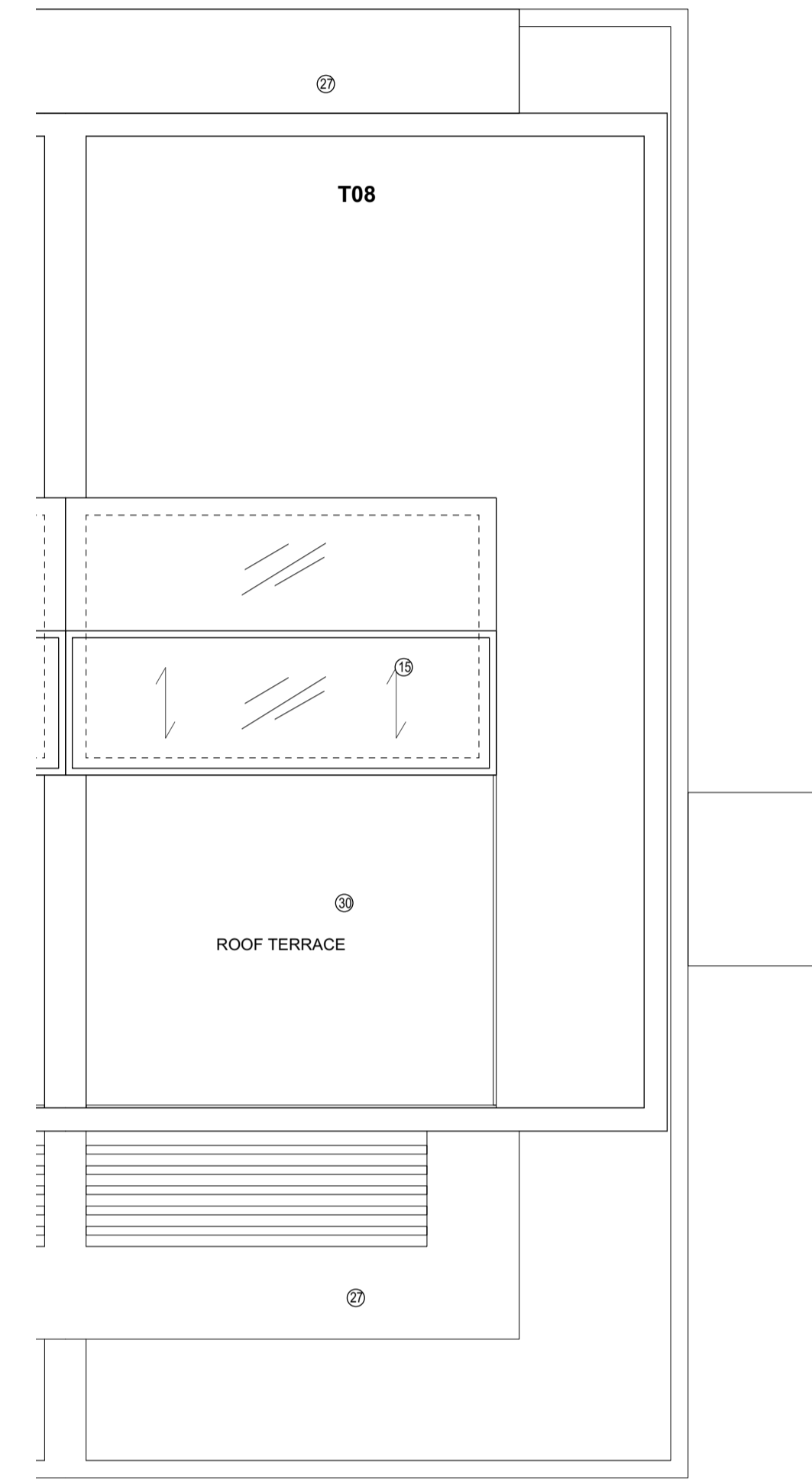
GROUND FLOOR PLAN



FIRST FLOOR PLAN



SECOND FLOOR PLAN



ROOF PLAN

PROPOSED WHEELCHAIR ADAPTABLE TOWN HOUSE T08  
3 BED 6 PERSON HOUSE

Material description:

Walls:

- ① Yellow fair faced brick in stretcher bond. Final type / colour and mortar colour subject of submission and approval by LPA
- ② White render
- ③ Cladding - TECU Classic Copper
- ④ Cladding - TECU Classic Copper (roof level)
- ⑤ Fixed louvered cladding - TECU Classic Copper (town houses)
- ⑥ Fixed louvered cladding - TECU Classic Copper (roof level)
- ⑦ Shopfront signage zone and cladding - TECU Bronze

Doors & Windows:

- ⑧ Double glazed doors - Copper anodised aluminium frames
- ⑨ Double glazed doors - Copper anodised aluminium frames (roof level)
- ⑩ Double glazed tilt and turn windows - Copper anodised aluminium frames
- ⑪ Double glazed tilt and turn windows - Copper anodised aluminium (roof level)
- ⑫ Double glazed sliding doors - Copper anodised aluminium frame
- ⑬ Fixed frameless double glazed windows
- ⑭ Low iron toughened laminated shopfront glazing
- ⑮ Double glazed sliding rooflight lantern

Privacy Screens:

- ⑯ Sliding louvered privacy screens - Copper anodised aluminium
- ⑰ Sliding louvered privacy screens - Copper anodised aluminium (roof level)
- ⑱ Opaque toughened laminated glass privacy screens

Balustrading:

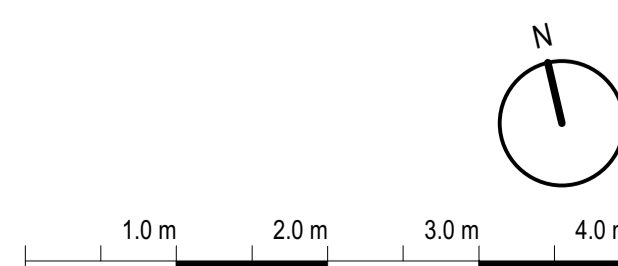
- ⑲ Toughened laminated glass balustrades
- ⑳ Recessed balconies with copper coloured metal balustrades
- ㉑ Juliet balconies with copper coloured metal balustrades
- ㉒ Balconies with copper coloured metal balustrades - Tecu Classic Copper cladding

Roofs:

- ㉓ TECU Classic Copper cladding with integrated photovoltaics
- ㉔ TECU Classic Copper cladding for town houses
- ㉕ TECU Classic Copper Flashing
- ㉖ Sedum green roof finish
- ㉗ Canopies - with white rendered fascias and soffits with TECU Classic copper flashing and roofs
- ㉘ Soffit to recessed balconies - white render

Terraces:

- ㉙ Stone ( Refer to landscape proposals)
- ㉚ Composite timber decking ( Refer to landscape proposals)



Rev.	Date:	Description:
•	08.11.2016	Issued for information
•	29.11.2016	Issued for Planning

Project:	63-71 High Street, Hampton Hill
Dwg no:	1525 / PA.23
Drawing:	Proposed Wheelchair Adaptable Town House T08
Date:	October 2016
Scale:	1:50 @ A1

3s	architects and designers
	T +44 (0)20 8332 99-66 F +91 W www.3s-ad.com E info@3s-ad.com 17A Princes Road, Richmond upon Thames, Surrey TW10 6DQ

NOTES: Do not scale from this drawing. All dimensions in millimeters. All dimensions to be checked on site. All omissions and discrepancies to be reported to the architect immediately. This drawing is © 3s Architects and Designers. Use of these drawings must be authorised by 3s.

Planning Application