

11.0 Design Proposals - Proposed Street Scene

11.2 Views - High Street Looking South



- Scale, both width and height together with the architectural composition of solid and void of the north building is designed to respond to the existing building at 73 High Street which is separated by the gap in the frontage which provides access to the site to the rear which has recently developed
- Gap between the north and south buildings similar in proportion to others along the High Street
- The blind corner bays of the south building make an inverted reference to the 2 storey height glazed corner bay of 61 High Street
- The overall scale of the proposal is broken down by stepping the building line and introducing a change in height and the scale of the component parts, together with the variation of the set back roof level



63 - 71 High Street, Hampton Hill

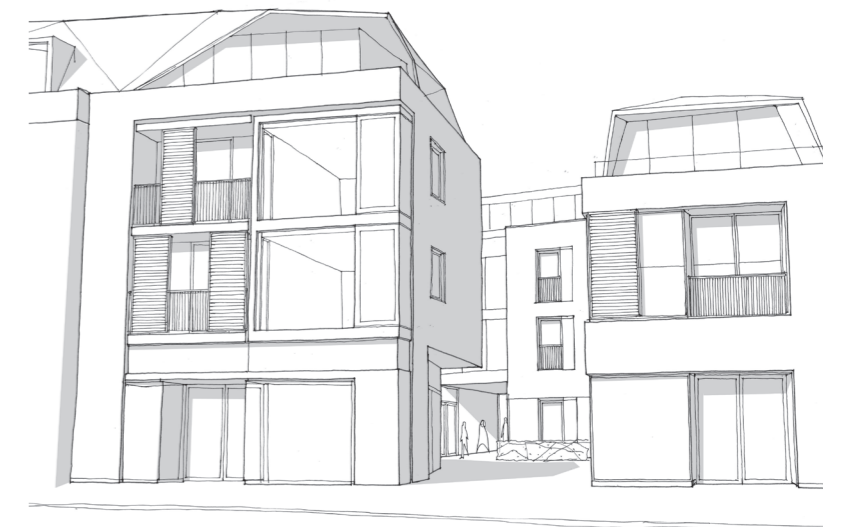
Planning Application 2016

11.0 Design Proposals - Proposed Street Scene

11.2 Views - High Street Looking West through to Courtyard



- A welcoming entrance to the site with views through to a courtyard, and garden square beyond
- Vertical proportions are repeated throughout the courtyard buildings with sliding screens, doors and windows and vertical balustrading
- Solid brick buildings with thick walls and punctured openings
- More open facade to frontage with vertical windows
- Strong corners to windows provide solidity
- Buildings with a bottom, middle and top
- Sculptural roofs play on variety of roof forms in the area



Pre-application Meeting

Planning Application

- Roof greatly reduced in height footprint and scale;
- Additional window frames to living spaces reduce the scale of the windows and reflect the grain of the conservation area;
- Shopfront glazing set further back to provide greater depth and articulation at street level;

63 - 71 High Street, Hampton Hill

Planning Application 2016

11.0 Design Proposals - Proposed Street Scene

11.2 Views - High Street Looking West through to Courtyard

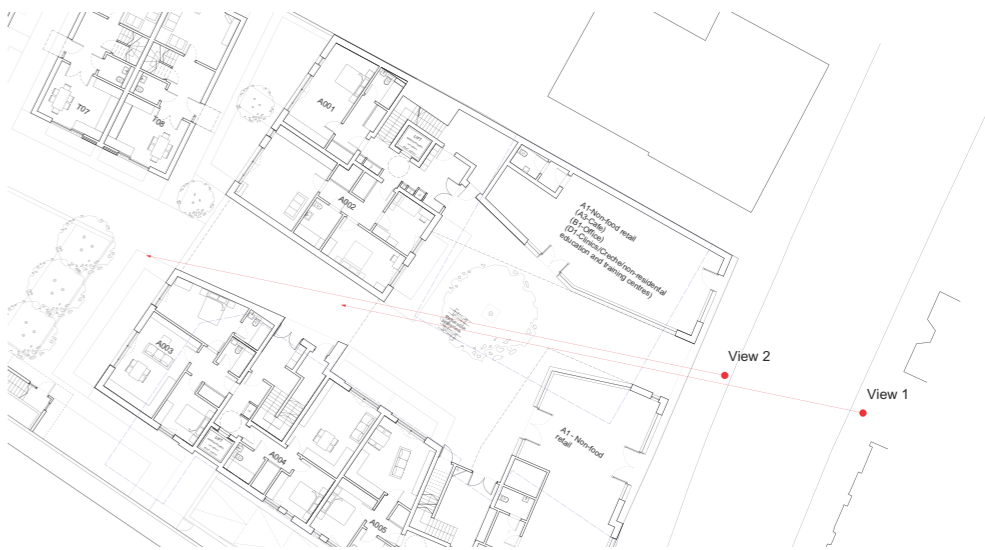


View 1

Views 1 and 2 are based on wire frame views from an accurate model of the proposals. These illustrate the glimpse view of the central section of the scheme and the profile of its roof when seen from eye level



View 2



63 - 71 High Street, Hampton Hill

Planning Application 2016