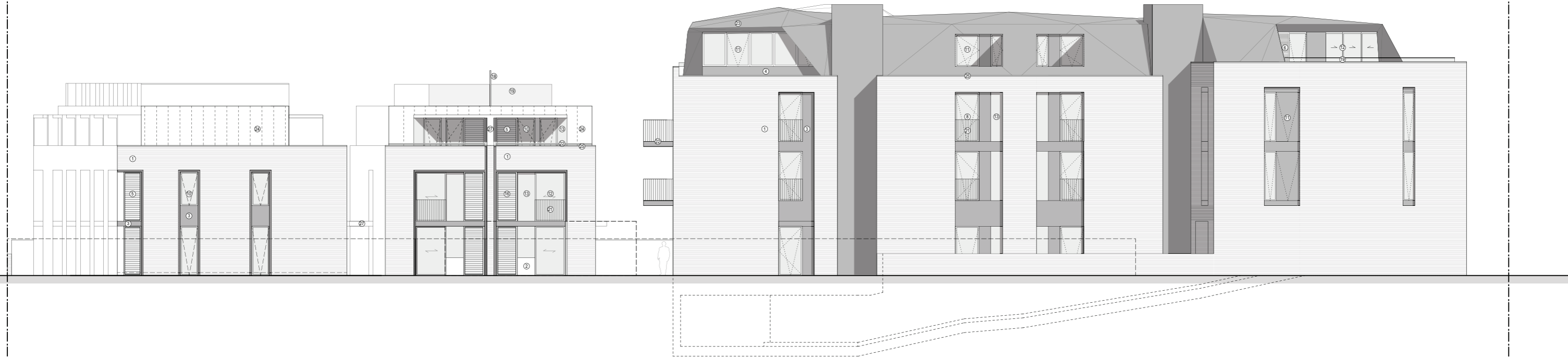


15.0 Appendix

15.1 Proposed Elevations



PROPOSED ELEVATION B - SOUTH SIDE ELEVATION

Material description:

Walls:

- ① Yellow fair faced brick in stretcher bond. Final type / colour and mortar colour subject of submission and approval by LPA
- ② White render
- ③ Cladding - TECU Classic Copper
- ④ Cladding - TECU Classic Copper (roof level)
- ⑤ Fixed louvered cladding - TECU Classic Copper (town houses)
- ⑥ Fixed louvered cladding - TECU Classic Copper (roof level)
- ⑦ Shopfront signage zone and cladding - TECU Bronze

Doors & Windows:

- ⑧ Double glazed doors - Copper anodised aluminium frames
- ⑨ Double glazed doors - Copper anodised aluminium frames (roof level)
- ⑩ Double glazed tilt and turn windows - Copper anodised aluminium frames
- ⑪ Double glazed tilt and turn windows - Copper anodised aluminium (roof level)
- ⑫ Double glazed sliding doors - Copper anodised aluminium frame
- ⑬ Fixed frameless double glazed windows
- ⑭ Low ion toughened laminated shopfront glazing
- ⑮ Double glazed sliding rooflight lantern

Privacy Screens:

- ⑯ Sliding louvered privacy screens - Copper anodised aluminium
- ⑰ Sliding louvered privacy screens - Copper anodised aluminium (roof level)
- ⑱ Opaque toughened laminated glass privacy screens

Balustrading:

- ⑲ Toughened laminated glass balustrades
- ⑳ Recessed balconies with copper coloured metal balustrades
- ㉑ Juliet balconies with copper coloured metal balustrades
- ㉒ Balconies with copper coloured metal balustrades - Tecu Classic Copper cladding

Roofs:

- ㉓ TECU Classic Copper cladding with integrated photovoltaics
- ㉔ TECU Classic Copper cladding for town houses
- ㉕ TECU Classic Copper Flashing
- ㉖ Sedum green roof finish

Canopies and Soffits:

- ㉗ Canopies - with white rendered fascias and soffits with TECU Classic copper flashing and roofs
- ㉘ Soffit to recessed balconies - white render

Terraces:

- ㉙ Stone (Refer to landscape proposals)
- ㉚ Composite timber decking (Refer to landscape proposals)

Rev.	Date	Description	Project	3s architects and designers	
1	08.11.2016	Issued for information	63-71 High Street, Hampton Hill	3s architects and designers	
2	29.11.2016	Issued for Planning	1525 / PA.06		
Drawing: Proposed Elevation B South Side Elevation			Date: October 2016	Scale: 1:100 @ A1	T +44 (0)20 8332 99 66 F -91 W www.3s-ad.com E info@3s-ad.com 17A Princes Road, Richmond upon Thames, Surrey TW10 6DQ

NOTES: Do not scale from this drawing. All dimensions in millimeters. All dimensions to be checked on site. All omissions and discrepancies to be reported to the architect immediately. This drawing is © 3s Architects and Designers. Use of these drawings must be authorised by 3s.



63 - 71 High Street, Hampton Hill

Planning Application 2016

15.0 Appendix

15.1 Proposed Elevations



PROPOSED ELEVATION C - WEST GARDEN ELEVATION

Material description:

Walls:

- ① Yellow fair faced brick in stretcher bond. Final type / colour and mortar colour subject of submission and approval by LPA
- ② White render
- ③ Cladding - TECU Classic Copper
- ④ Cladding - TECU Classic Copper (roof level)
- ⑤ Fixed louvered cladding - TECU Classic Copper (town houses)
- ⑥ Fixed louvered cladding - TECU Classic Copper (roof level)
- ⑦ Shopfront signage zone and cladding - TECU Bronze

Doors & Windows:

- ⑧ Double glazed doors - Copper anodised aluminium frames
- ⑨ Double glazed doors - Copper anodised aluminium frames (roof level)
- ⑩ Double glazed tilt and turn windows - Copper anodised aluminium frames
- ⑪ Double glazed tilt and turn windows - Copper anodised aluminium (roof level)
- ⑫ Double glazed sliding doors - Copper anodised aluminium frame
- ⑬ Fixed frameless double glazed windows
- ⑭ Low ion toughened laminated shopfront glazing
- ⑮ Double glazed sliding rooflight lantern

Privacy Screens:

- ⑯ Sliding louvred privacy screens - Copper anodised aluminium
- ⑰ Sliding louvred privacy screens - Copper anodised aluminium (roof level)
- ⑱ Opaque toughened laminated glass privacy screens

Balustrading:

- ⑲ Toughened laminated glass balustrades
- ⑳ Recessed balconies with copper coloured metal balustrades
- ㉑ Juliet balconies with copper coloured metal balustrades
- ㉒ Balconies with copper coloured metal balustrades - Tecu Classic Copper cladding

Roofs:

- ㉓ TECU Classic Copper cladding with integrated photovoltaics
- ㉔ TECU Classic Copper cladding for town houses
- ㉕ TECU Classic Copper Flashing
- ㉖ Sedum green roof finish

Canopies and Soffits:

- ㉗ Canopies - with white rendered fascias and soffits with TECU Classic copper flashing and roofs
- ㉘ Soffit to recessed balconies - white render

Terraces:

- ㉙ Stone (Refer to landscape proposals)
- ㉚ Composite timber decking (Refer to landscape proposals)

Rev.	Date	Description	Project	63-71 High Street, Hampton Hill	
1	08.11.2016	Issued for information	Dwg no:	1525 / PA.07	
2	20.11.2016	Issued for Planning	Drawing:	Proposed Elevation C West Garden Elevation	
<small>NOTES: Do not scale from this drawing. All dimensions in millimeters. All dimensions to be checked on site. All omissions and discrepancies to be reported to the architect immediately. This drawing is © 3s Architects and Designers. Use of these drawings must be authorised by 3s.</small>			Date:	October 2016	
Scale:	1:100 @ A1	Scale:	1:100 @ A1	Rev:	1
			Tel:	+44 (0)20 8332 99 66	
			Web:	www.3s-ad.com	
			Email:	info@3s-ad.com	
			Address:	17A Princes Road, Richmond upon Thames, Surrey TW10 6DQ	

Planning Application

3s architects and designers

63 - 71 High Street, Hampton Hill

Planning Application 2016

3s architects
interior designers
commercial

15.0 Appendix

15.1 Proposed Elevations



PROPOSED ELEVATION D - NORTH SIDE ELEVATION

Material description:

Walls:

- ① Yellow fair faced brick in stretcher bond. Final type / colour and mortar colour subject of submission and approval by LPA
- ② White render
- ③ Cladding - TECU Classic Copper
- ④ Cladding - TECU Classic Copper (roof level)
- ⑤ Fixed louvered cladding - TECU Classic Copper (town houses)
- ⑥ Fixed louvered cladding - TECU Classic Copper (roof level)
- ⑦ Shopfront signage zone and cladding - TECU Bronze

Doors & Windows:

- ⑧ Double glazed doors - Copper anodised aluminium frames
- ⑨ Double glazed doors - Copper anodised aluminium frames (roof level)
- ⑩ Double glazed tilt and turn windows - Copper anodised aluminium frames
- ⑪ Double glazed tilt and turn windows - Copper anodised aluminium (roof level)
- ⑫ Double glazed sliding doors - Copper anodised aluminium frame
- ⑬ Fixed frameless double glazed windows
- ⑭ Low iron toughened laminated shopfront glazing
- ⑮ Double glazed sliding rooflight lantern

Privacy Screens:

- ⑯ Sliding louvred privacy screens - Copper anodised aluminium
- ⑰ Sliding louvered privacy screens - Copper anodised aluminium (roof level)
- ⑱ Opaque toughened laminated glass privacy screens

Balustrading:

- ⑲ Toughened laminated glass balustrades
- ⑳ Recessed balconies with copper coloured metal balustrades
- ㉑ Juliet balconies with copper coloured metal balustrades
- ㉒ Balconies with copper coloured metal balustrades - Tecu Classic Copper cladding

Roofs:

- ㉓ TECU Classic Copper cladding with integrated photovoltaics
- ㉔ TECU Classic Copper cladding for town houses
- ㉕ TECU Classic Copper Flashing
- ㉖ Sedum green roof finish

Canopies and Soffits:

- ㉗ Canopies - with white rendered fascias and soffits with TECU Classic copper flashing and roofs
- ㉘ Soffit to recessed balconies - white render

Terraces:

- ㉙ Stone (Refer to landscape proposals)
- ㉚ Composite timber decking (Refer to landscape proposals)

Rev:	Date:	Description:	Project:	3s architects and designers	
1	08.11.2016	Issued for information	63-71 High Street, Hampton Hill	3s architects and designers	
2	20.11.2016	Issued for Planning	1525 / PA.08		
Drawing: Proposed Elevation D North Side Elevation			Date: October 2016	Scale: 1:100 @ A1	T +44 (0)20 8332 99 66 F -91 W www.3s-ad.com E info@3s-ad.com 17A Princes Road, Richmond upon Thames, Surrey TW10 6DQ

NOTES: Do not scale from this drawing. All dimensions in millimeters. All dimensions to be checked on site. All omissions and discrepancies to be reported to the architect immediately. This drawing is © 3s Architects and Designers. Use of these drawings must be authorised by 3s.

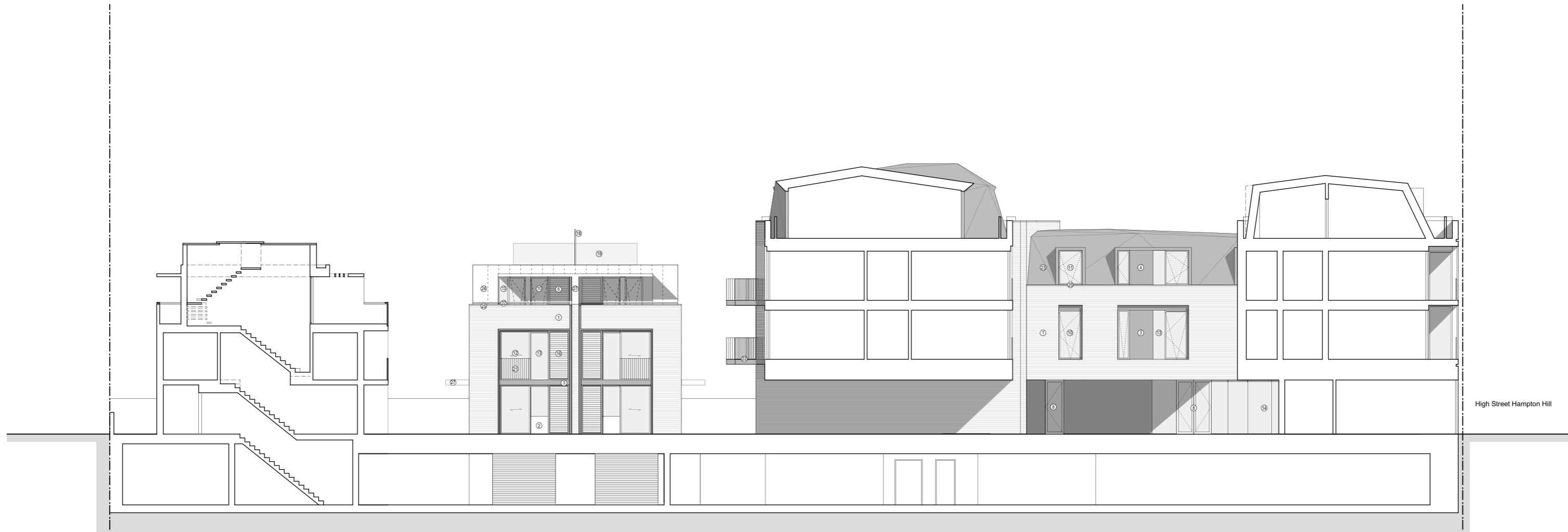


63 - 71 High Street, Hampton Hill

Planning Application 2016

15.0 Appendix

15.1 Proposed Elevations



PROPOSED SECTION F

Material description:

Walls:

- ① Yellow fair faced brick in stretcher bond. Final type / colour and mortar colour subject of submission and approval by LPA
- ② White render
- ③ Cladding - TECU Classic Copper
- ④ Cladding - TECU Classic Copper (roof level)
- ⑤ Fixed louvered cladding - TECU Classic Copper (town houses)
- ⑥ Fixed louvered cladding - TECU Classic Copper (roof level)
- ⑦ Shopfront signage zone and cladding - TECU Bronze

Doors & Windows:

- ⑧ Double glazed doors - Copper anodised aluminium frames
- ⑨ Double glazed doors - Copper anodised aluminium frames (roof level)
- ⑩ Double glazed tilt and turn windows - Copper anodised aluminium frames
- ⑪ Double glazed tilt and turn windows - Copper anodised aluminium (roof level)
- ⑫ Double glazed sliding doors - Copper anodised aluminium frame
- ⑬ Fixed frameless double glazed windows
- ⑭ Low ion toughened laminated shopfront glazing
- ⑮ Double glazed sliding rooflight lantern

Privacy Screens:

- ⑯ Sliding louvred privacy screens - Copper anodised aluminium
- ⑰ Sliding louvred privacy screens - Copper anodised aluminium (roof level)
- ⑱ Opaque toughened laminated glass privacy screens

Balustrading:

- ⑲ Toughened laminated glass balustrades
- ⑳ Recessed balconies with copper coloured metal balustrades
- ㉑ Juliet balconies with copper coloured metal balustrades
- ㉒ Balconies with copper coloured metal balustrades - Tecu Classic Copper cladding

Roofs:

- ㉓ TECU Classic Copper cladding with integrated photovoltaics
- ㉔ TECU Classic Copper cladding for town houses
- ㉕ TECU Classic Copper Flashing
- ㉖ Sedum green roof finish

Canopies and Soffits:

- ㉗ Canopies - with white rendered fascias and soffits with TECU Classic copper flashing and roofs
- ㉘ Soffit to recessed balconies - white render

Terraces:

- ㉙ Stone (Refer to landscape proposals)
- ㉚ Composite timber decking (Refer to landscape proposals)

Rev	Date	Description	Project	63-71 High Street, Hampton Hill
1	08.11.2016	Issued for information	Dwg no:	1525 / PA.10
2	20.11.2016	Issued for Planning	Drawing:	Section F
<small>NOTES: Do not scale from this drawing. All dimensions in millimeters. All dimensions to be checked on site. All omissions and discrepancies to be reported to the architect immediately. This drawing is © 3s Architects and Designers. Use of these drawings must be authorised by 3s.</small>			Date:	October 2016
			Scale:	1:100 @ A1
			Rev:	C - D 3s
			Tel:	+44 (0)20 8332 99 66 F -91 W www.3s-ad.com E info@3s-ad.com
				17A Princes Road, Richmond upon Thames, Surrey TW10 6DQ



Planning Application

3s architects and designers

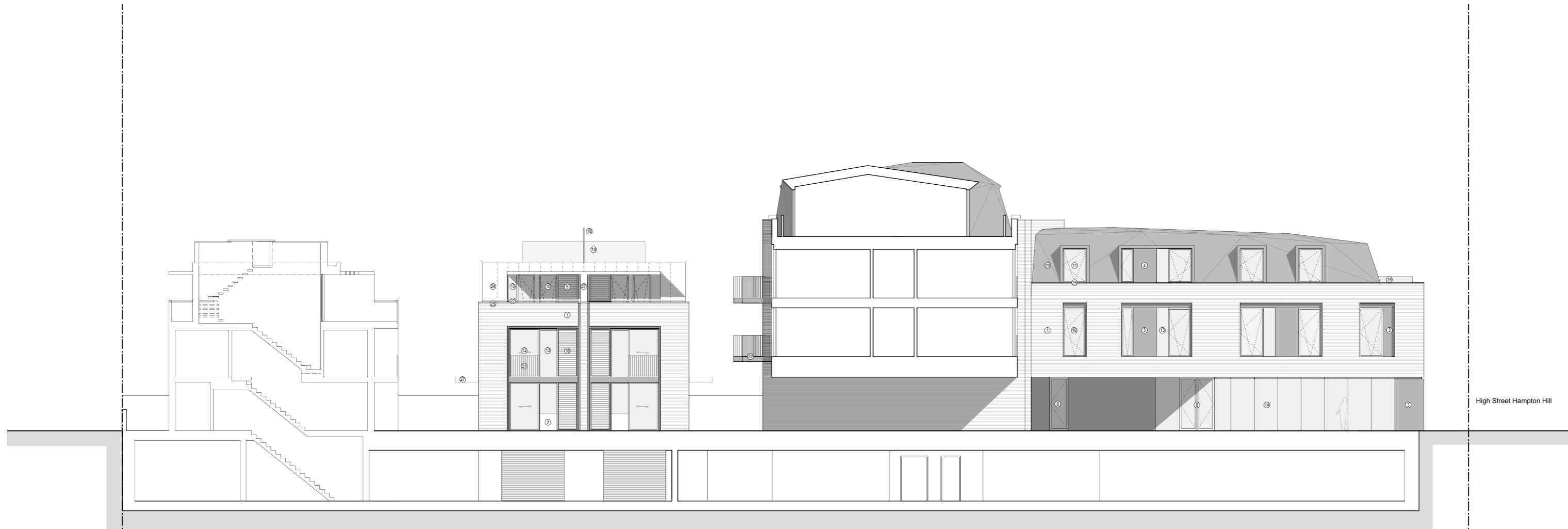
63 - 71 High Street, Hampton Hill

Planning Application 2016

3s architects
interior designers
commercial

15.0 Appendix

15.1 Proposed Elevations



PROPOSED ELEVATION SECTION E - COURTYARD SOUTH ELEVATION

Material description:

Walls:

- ① Yellow fair faced brick in stretcher bond. Final type / colour and mortar colour subject of submission and approval by LPA
- ② White render
- ③ Cladding - TECU Classic Copper
- ④ Cladding - TECU Classic Copper (roof level)
- ⑤ Fixed louvered cladding - TECU Classic Copper (town houses)
- ⑥ Fixed louvered cladding - TECU Classic Copper (roof level)
- ⑦ Shopfront signage zone and cladding - TECU Bronze

Doors & Windows:

- ⑧ Double glazed doors - Copper anodised aluminium frames
- ⑨ Double glazed doors - Copper anodised aluminium frames (roof level)
- ⑩ Double glazed tilt and turn windows - Copper anodised aluminium frames
- ⑪ Double glazed tilt and turn windows - Copper anodised aluminium (roof level)
- ⑫ Double glazed sliding doors - Copper anodised aluminium frame
- ⑬ Fixed frameless double glazed windows
- ⑭ Low ion toughened laminated shopfront glazing
- ⑮ Double glazed sliding rooflight lantern

Privacy Screens:

- ⑯ Sliding louvred privacy screens - Copper anodised aluminium
- ⑰ Sliding louvred privacy screens - Copper anodised aluminium (roof level)
- ⑱ Opaque toughened laminated glass privacy screens

Balustrading:

- ⑲ Toughened laminated glass balustrades
- ⑳ Recessed balconies with copper coloured metal balustrades
- ㉑ Juliet balconies with copper coloured metal balustrades
- ㉒ Balconies with copper coloured metal balustrades - Tecu Classic Copper cladding

Roofs:

- ㉓ TECU Classic Copper cladding with integrated photovoltaics
- ㉔ TECU Classic Copper cladding for town houses
- ㉕ TECU Classic Copper Flashing
- ㉖ Sedum green roof finish

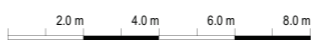
Canopies and Soffits:

- ㉗ Canopies - with white rendered fascias and soffits with TECU Classic copper flashing and roofs
- ㉘ Soffit to recessed balconies - white render

Terraces:

- ㉙ Stone (Refer to landscape proposals)
- ㉚ Composite timber decking (Refer to landscape proposals)

Rev	Date	Description	Project	63-71 High Street, Hampton Hill
1	08.11.2016	Issued for information	Dwg no:	1525 / PA.09
2	20.11.2016	Issued for Planning	Drawing:	Proposed Elevation E Courtyard South Elevation
<small>NOTES: Do not scale from this drawing. All dimensions in millimeters. All dimensions to be checked on site. All omissions and discrepancies to be reported to the architect immediately. This drawing is © 3s Architects and Designers. Use of these drawings must be authorised by 3s.</small>			Date:	October 2016
			Scale:	1:100 @ A1
			Rev:	1
			<small>T +44 (0)20 8332 99 66 F -91 W www.3s-ad.com E info@3s-ad.com 17A Princes Road, Richmond upon Thames, Surrey TW10 6DQ</small>	



Planning Application

3s architects and designers

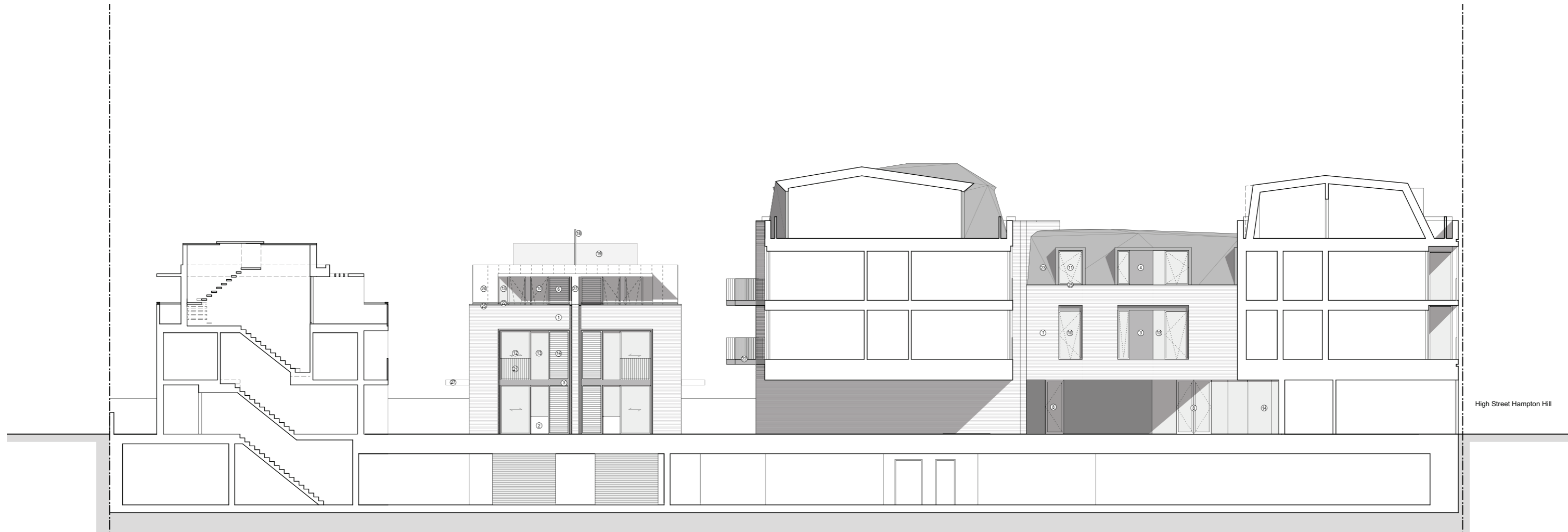
63 - 71 High Street, Hampton Hill

Planning Application 2016

3s architects
interior designers
commercial

15.0 Appendix

15.1 Proposed Elevations



PROPOSED SECTION F

Material description:

Walls:

- ① Yellow fair faced brick in stretcher bond. Final type / colour and mortar colour subject of submission and approval by LPA
- ② White render
- ③ Cladding - TECU Classic Copper
- ④ Cladding - TECU Classic Copper (roof level)
- ⑤ Fixed louvered cladding - TECU Classic Copper (town houses)
- ⑥ Fixed louvered cladding - TECU Classic Copper (roof level)
- ⑦ Shopfront signage zone and cladding - TECU Bronze

Doors & Windows:

- ⑧ Double glazed doors - Copper anodised aluminium frames
- ⑨ Double glazed doors - Copper anodised aluminium frames (roof level)
- ⑩ Double glazed tilt and turn windows - Copper anodised aluminium frames
- ⑪ Double glazed tilt and turn windows - Copper anodised aluminium (roof level)
- ⑫ Double glazed sliding doors - Copper anodised aluminium frame
- ⑬ Fixed frameless double glazed windows
- ⑭ Low ion toughened laminated shopfront glazing
- ⑮ Double glazed sliding rooflight lantern

Privacy Screens:

- ⑯ Sliding louvred privacy screens - Copper anodised aluminium
- ⑰ Sliding louvred privacy screens - Copper anodised aluminium (roof level)
- ⑱ Opaque toughened laminated glass privacy screens

Balustrading:

- ⑲ Toughened laminated glass balustrades
- ⑳ Recessed balconies with copper coloured metal balustrades
- ㉑ Juliet balconies with copper coloured metal balustrades
- ㉒ Balconies with copper coloured metal balustrades - Tecu Classic Copper cladding

Roofs:

- ㉓ TECU Classic Copper cladding with integrated photovoltaics
- ㉔ TECU Classic Copper cladding for town houses
- ㉕ TECU Classic Copper Flashing
- ㉖ Sedum green roof finish

Canopies and Soffits:

- ㉗ Canopies - with white rendered fascias and soffits with TECU Classic copper flashing and roofs
- ㉘ Soffit to recessed balconies - white render

Terraces:

- ㉙ Stone (Refer to landscape proposals)
- ㉚ Composite timber decking (Refer to landscape proposals)

Rev	Date	Description	Project	63-71 High Street, Hampton Hill
1	08.11.2016	Issued for information	Dwg no:	1525 / PA.10
2	20.11.2016	Issued for Planning	Drawing:	Section F
<small>NOTES: Do not scale from this drawing. All dimensions in millimeters. All dimensions to be checked on site. All omissions and discrepancies to be reported to the architect immediately. This drawing is © 3s Architects and Designers. Use of these drawings must be authorised by 3s.</small>			Date:	October 2016
			Scale:	1:100 @ A1
			Rev:	C - D 3s
			Tel:	+44 (0)20 8332 99 66 F -91
			W:	www.3s-ad.com
			E:	info@3s-ad.com
			17A Princes Road, Richmond upon Thames, Surrey TW10 6DQ	



Planning Application

3s architects and designers

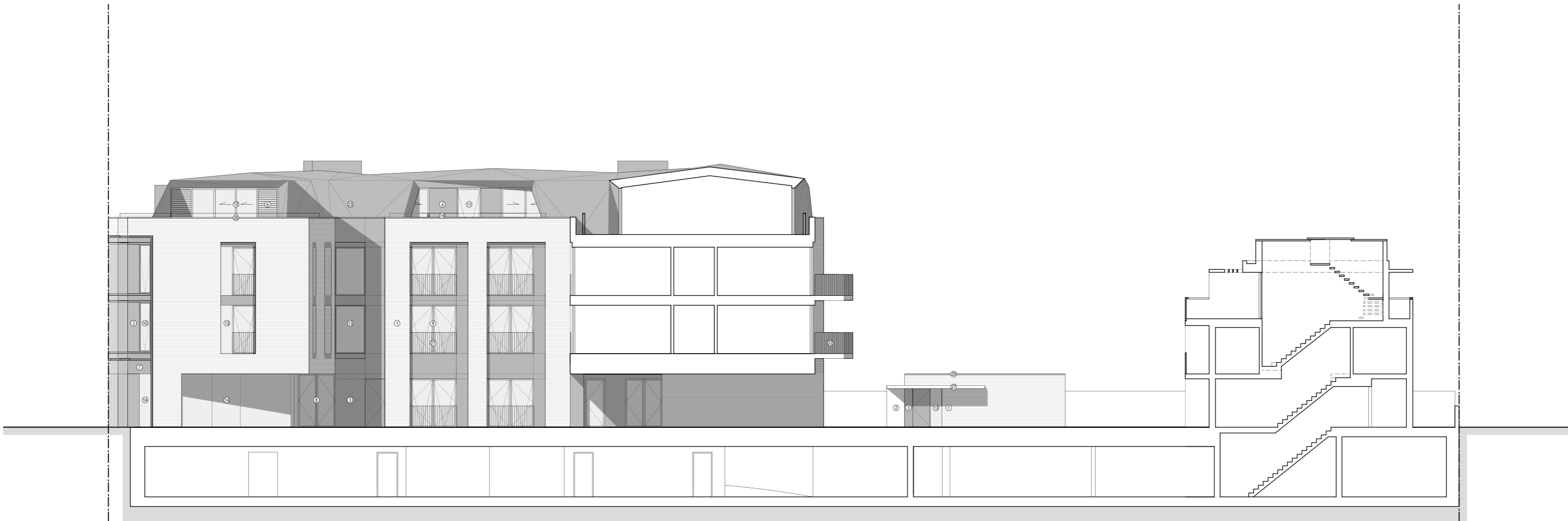
63 - 71 High Street, Hampton Hill

Planning Application 2016

3s architects
interior designers
commercial

15.0 Appendix

15.1 Proposed Elevations



PROPOSED ELEVATION SECTION G - COURTYARD NORTH ELEVATION

Material description:

Walls:

- ① Yellow fair faced brick in stretcher bond. Final type / colour and mortar colour subject of submission and approval by LPA
- ② White render
- ③ Cladding - TECU Classic Copper
- ④ Cladding - TECU Classic Copper (roof level)
- ⑤ Fixed louvered cladding - TECU Classic Copper (town houses)
- ⑥ Fixed louvered cladding - TECU Classic Copper (roof level)
- ⑦ Shopfront signage zone and cladding - TECU Bronze

Doors & Windows:

- ⑧ Double glazed doors - Copper anodised aluminium frames
- ⑨ Double glazed doors - Copper anodised aluminium frames (roof level)
- ⑩ Double glazed tilt and turn windows - Copper anodised aluminium frames
- ⑪ Double glazed tilt and turn windows - Copper anodised aluminium (roof level)
- ⑫ Double glazed sliding doors - Copper anodised aluminium frame
- ⑬ Fixed frameless double glazed windows
- ⑭ Low iron toughened laminated shopfront glazing
- ⑮ Double glazed sliding rooflight lantern

Privacy Screens:

- ⑯ Sliding louvered privacy screens - Copper anodised aluminium
- ⑰ Sliding louvered privacy screens - Copper anodised aluminium (roof level)
- ⑱ Opaque toughened laminated glass privacy screens

Balustrading:

- ⑲ Toughened laminated glass balustrades
- ⑳ Recessed balconies with copper coloured metal balustrades
- ㉑ Juliet balconies with copper coloured metal balustrades
- ㉒ Balconies with copper coloured metal balustrades - Tecu Classic Copper cladding

Roofs:

- ㉓ TECU Classic Copper cladding with integrated photovoltaics
- ㉔ TECU Classic Copper cladding for town houses
- ㉕ TECU Classic Copper Flashing
- ㉖ Sedum green roof finish

Canopies and Soffits:

- ㉗ Canopies - with white rendered fascias and soffits with TECU Classic copper flashing and roofs
- ㉘ Soffit to recessed balconies - white render

Terraces:

- ㉙ Stone (Refer to landscape proposals)
- ㉚ Composite timber decking (Refer to landscape proposals)



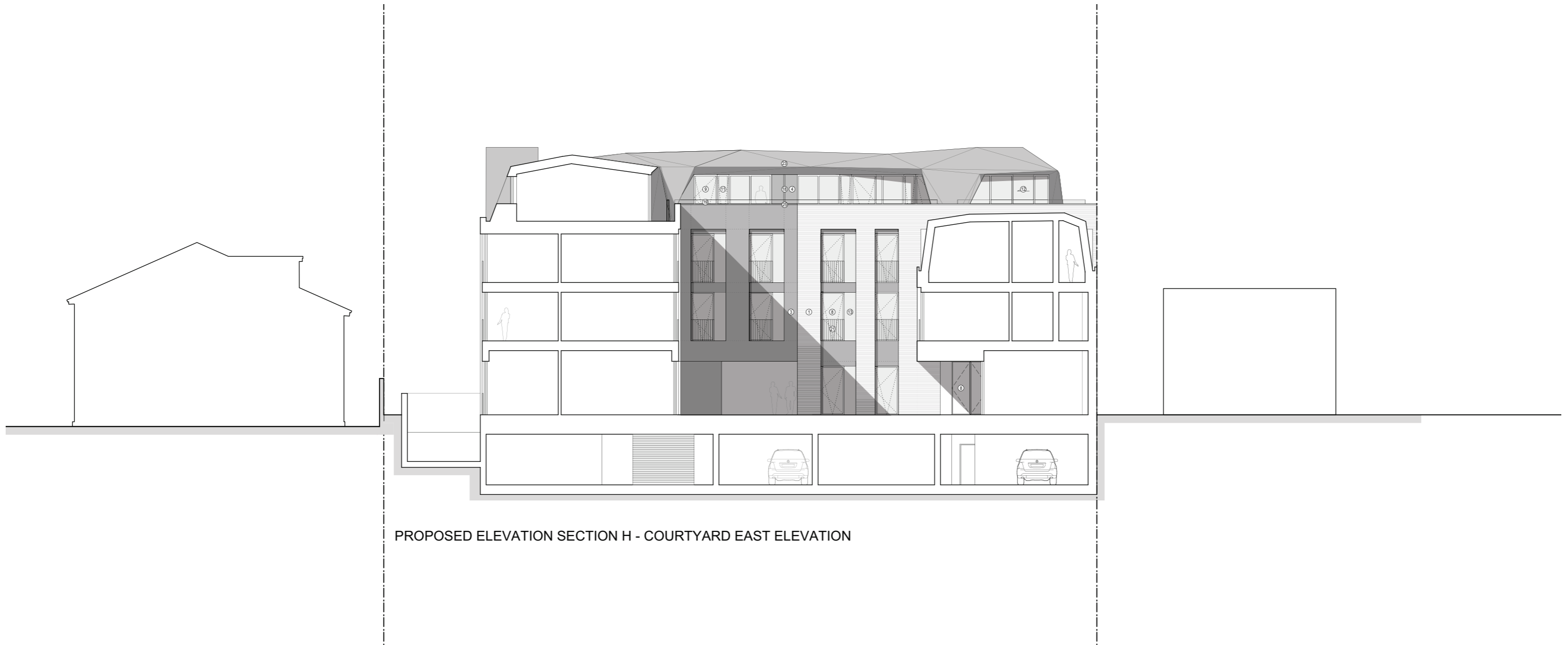
Rev	Date	Description	Project	3s architects and designers	
1	08.11.2016	Issued for information	63-71 High Street, Hampton Hill		
2	29.11.2016	Issued for Planning	1525 / PA.11		
Drawing: Proposed Elevation Section G Courtyard North Elevation					
NOTES: Do not scale from this drawing. All dimensions in millimeters. All dimensions to be checked on site. All omissions and discrepancies to be reported to the architect immediately. This drawing is © 3s Architects and Designers. Use of these drawings must be authorized by 3s.			Date:	October 2016	T +44 (0)20 8332 99 46 F -91 W www.3s-ad.com E info@3s-ad.com
			Scale:	1:100 @ A1	17A Princes Road, Richmond upon Thames, Surrey TW9 6DQ

63 - 71 High Street, Hampton Hill

Planning Application 2016

15.0 Appendix

15.1 Proposed Elevations



PROPOSED ELEVATION SECTION H - COURTYARD EAST ELEVATION

Material description:

Walls:

- ① Yellow fair faced brick in stretcher bond. Final type / colour and mortar colour subject of submission and approval by LPA
- ② White render
- ③ Cladding - TECU Classic Copper
- ④ Cladding - TECU Classic Copper (roof level)
- ⑤ Fixed louvered cladding - TECU Classic Copper (town houses)
- ⑥ Fixed louvered cladding - TECU Classic Copper (roof level)
- ⑦ Shopfront signage zone and cladding - TECU Bronze

Doors & Windows:

- ⑧ Double glazed doors - Copper anodised aluminium frames
- ⑨ Double glazed doors - Copper anodised aluminium frames (roof level)
- ⑩ Double glazed tilt and turn windows - Copper anodised aluminium frames
- ⑪ Double glazed tilt and turn windows - Copper anodised aluminium (roof level)
- ⑫ Double glazed sliding doors - Copper anodised aluminium frame
- ⑬ Fixed frameless double glazed windows
- ⑭ Low ion toughened laminated shopfront glazing
- ⑮ Double glazed sliding rooflight lantern

Privacy Screens:

- ⑯ Sliding louvred privacy screens - Copper anodised aluminium
- ⑰ Sliding louvered privacy screens - Copper anodised aluminium (roof level)
- ⑱ Opaque toughened laminated glass privacy screens

Balustrading:

- ⑲ Toughened laminated glass balustrades
- ⑳ Recessed balconies with copper coloured metal balustrades
- ㉑ Juliet balconies with copper coloured metal balustrades
- ㉒ Balconies with copper coloured metal balustrades - Tecu Classic Copper cladding

Roofs:

- ㉓ TECU Classic Copper cladding with integrated photovoltaics
- ㉔ TECU Classic Copper cladding for town houses
- ㉕ TECU Classic Copper Flashing
- ㉖ Sedum green roof finish

Canopies and Soffits:

- ㉗ Canopies - with white rendered fascias and soffits with TECU Classic copper flashing and roofs
- ㉘ Soffit to recessed balconies - white render

Terraces:

- ㉙ Stone (Refer to landscape proposals)
- ㉚ Composite timber decking (Refer to landscape proposals)



Rev:	Date:	Description:	Project:	63-71 High Street, Hampton Hill				
-	08.11.2016	Issued for information	Dwg no:	1525 / PA.12				
.	28.11.2016	Issued for Planning	Drawing:	Proposed Elevation H Courtyard East Elevation				
NOTES: Do not scale from this drawing. All dimensions in millimetres. All dimensions to be checked on site. All omissions and discrepancies to be reported to the architect immediately. This drawing is © 3s Architects and Designers. Use of these drawings must be authorised by 3s.			Date:	October 2016	C	D	Rev:	T +44 (0)20 8332 99-66 F -91 W www.3s-ad.com E info@3s-ad.com 17A Princes Road, Richmond upon Thames, Surrey TW10 6DQ
			Scale:	1:100 @ A1	C	D	3s	architects and designers

Planning Application

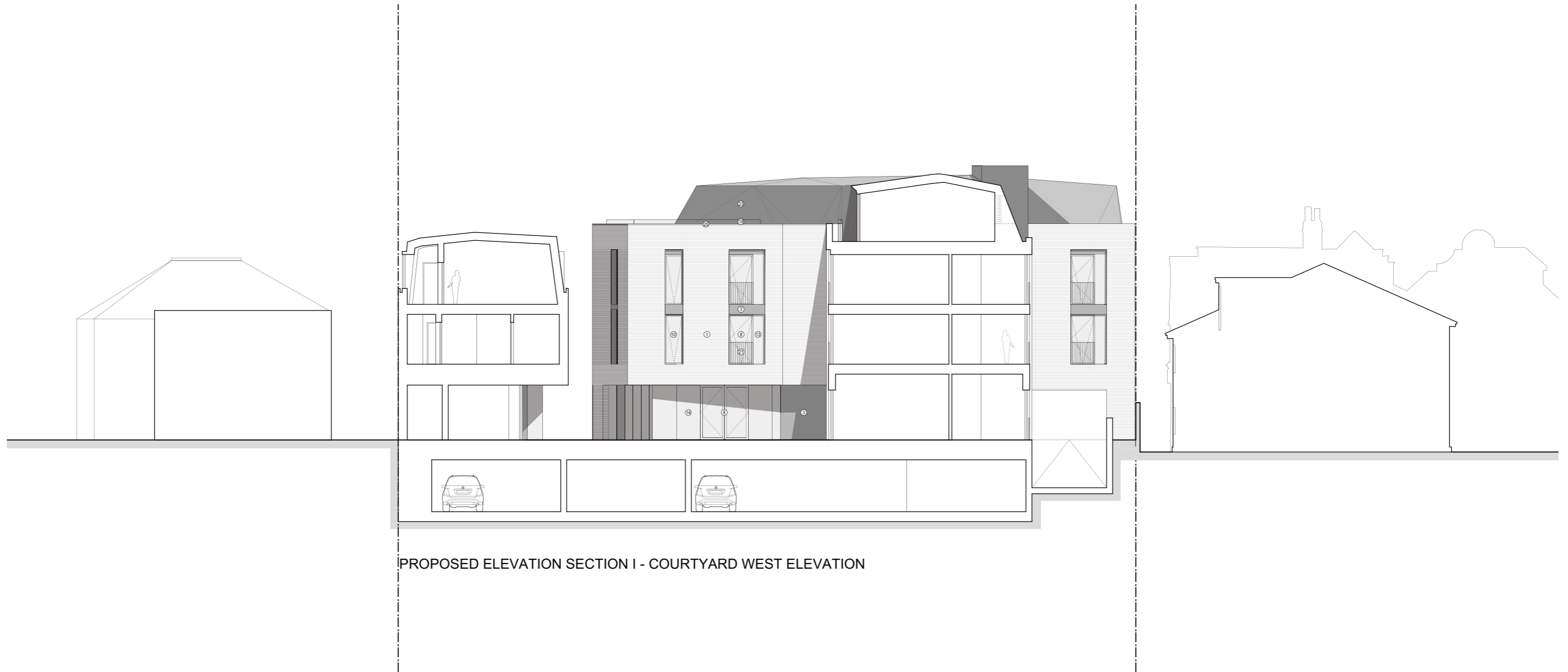
63 - 71 High Street, Hampton Hill

Planning Application 2016



15.0 Appendix

15.1 Proposed Elevations



PROPOSED ELEVATION SECTION I - COURTYARD WEST ELEVATION

Material description:

Walls:

- ① Yellow fair faced brick in stretcher bond. Final type / colour and mortar colour subject of submission and approval by LPA
- ② White render
- ③ Cladding - TECU Classic Copper
- ④ Cladding - TECU Classic Copper (roof level)
- ⑤ Fixed louvered cladding - TECU Classic Copper (town houses)
- ⑥ Fixed louvered cladding - TECU Classic Copper (roof level)
- ⑦ Shopfront signage zone and cladding - TECU Bronze

Doors & Windows:

- ⑧ Double glazed doors - Copper anodised aluminium frames
- ⑨ Double glazed doors - Copper anodised aluminium frames (roof level)
- ⑩ Double glazed tilt and turn windows - Copper anodised aluminium frames
- ⑪ Double glazed tilt and turn windows - Copper anodised aluminium (roof level)
- ⑫ Double glazed sliding doors - Copper anodised aluminium frame
- ⑬ Fixed frameless double glazed windows
- ⑭ Low ion toughened laminated shopfront glazing
- ⑮ Double glazed sliding rooflight lantern

Privacy Screens:

- ⑯ Sliding louvred privacy screens - Copper anodised aluminium
- ⑰ Sliding louvred privacy screens - Copper anodised aluminium (roof level)
- ⑱ Opaque toughened laminated glass privacy screens

Balustrading:

- ⑲ Toughened laminated glass balustrades
- ⑳ Recessed balconies with copper coloured metal balustrades
- ㉑ Juliet balconies with copper coloured metal balustrades
- ㉒ Balconies with copper coloured metal balustrades - Tecu Classic Copper cladding

Roofs:

- ㉓ TECU Classic Copper cladding with integrated photovoltaics
- ㉔ TECU Classic Copper cladding for town houses
- ㉕ TECU Classic Copper Flashing
- ㉖ Sedum green roof finish

Canopies and Soffits:

- ㉗ Canopies - with white rendered fascias and soffits with TECU Classic copper flashing and roofs
- ㉘ Soffit to recessed balconies - white render

Terraces:

- ㉙ Stone (Refer to landscape proposals)
- ㉚ Composite timber decking (Refer to landscape proposals)



Rev:	Date:	Description:	Project:	63-71 High Street, Hampton Hill
1	08.11.2016	Issued for information	Dwg no:	1525 / PA.13
2	28.11.2016	Issued for Planning	Drawing:	Proposed Elevation Section I Courtyard West Elevation
<small>NOTES: Do not scale from this drawing. All dimensions in millimeters. All dimensions to be checked on site. All omissions and discrepancies to be reported to the architect immediately. This drawing is © 3s Architects and Designers. Use of these drawings must be authorized by 3s.</small>			Date:	October 2016
Scale:	1:100 @ A1	C	D	3s
			Rev:	•
			<small>T +44 (0)20 8332 99-66 F -91 W www.3s-ad.com E info@3s-ad.com 17A Princes Road, Richmond upon Thames, Surrey TW10 6DQ</small>	

Planning Application

3s architects and designers

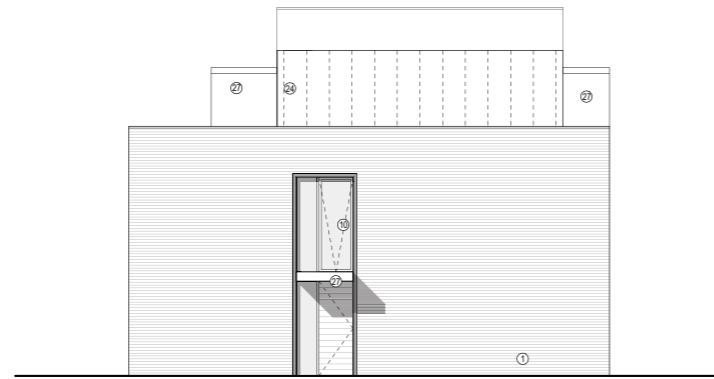
63 - 71 High Street, Hampton Hill

Planning Application 2016

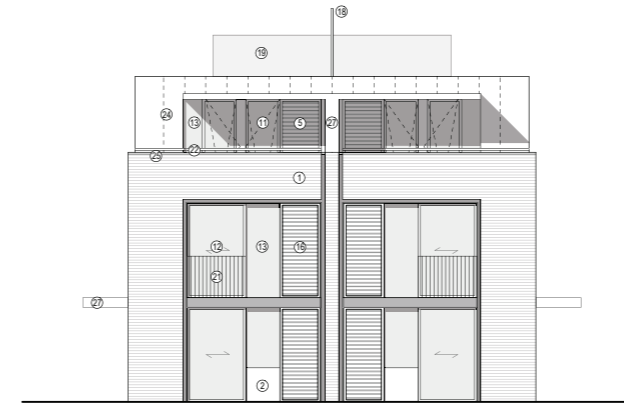


15.0 Appendix

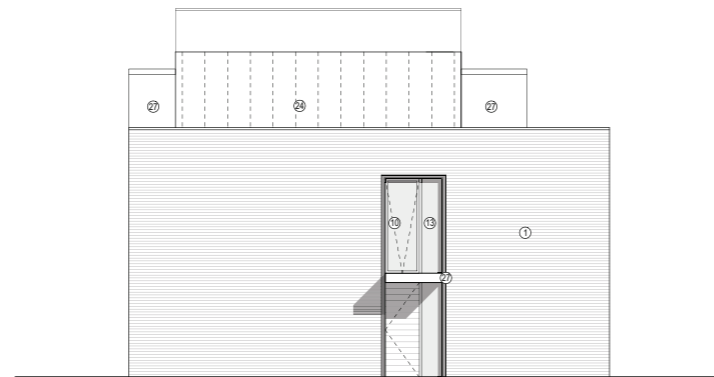
15.1 Proposed Elevations



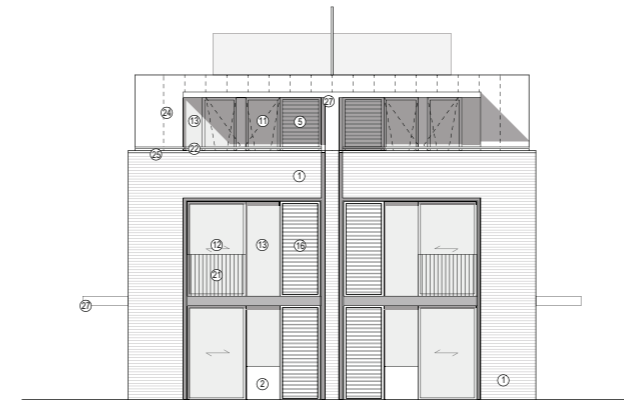
PROPOSED TOWN HOUSE TYPE 1 -
SIDE EAST ELEVATION J



PROPOSED TOWN HOUSE TYPE 1 -
FRONT SOUTH ELEVATION K



PROPOSED TOWN HOUSE TYPE 1 -
SIDE WEST ELEVATION L



PROPOSED TOWN HOUSE TYPE 1 -
REAR NORTH ELEVATION M

Material description:

Walls:

- ① Yellow fair faced brick in stretcher bond. Final type / colour and mortar colour subject of submission and approval by LPA
- ② White render
- ③ Cladding - TECU Classic Copper
- ④ Cladding - TECU Classic Copper (roof level)
- ⑤ Fixed louvered cladding - TECU Classic Copper (town houses)
- ⑥ Fixed louvered cladding - TECU Classic Copper (roof level)
- ⑦ Shopfront signage zone and cladding - TECU Bronze

Doors & Windows:

- ⑧ Double glazed doors - Copper anodised aluminium frames
- ⑨ Double glazed doors - Copper anodised aluminium frames (roof level)
- ⑩ Double glazed tilt and turn windows - Copper anodised aluminium frames
- ⑪ Double glazed tilt and turn windows - Copper anodised aluminium (roof level)
- ⑫ Double glazed sliding doors - Copper anodised aluminium frame
- ⑬ Fixed frameless double glazed windows
- ⑭ Low ion toughened laminated shopfront glazing
- ⑮ Double glazed sliding rooflight lantern

Privacy Screens:

- ⑯ Sliding louvred privacy screens - Copper anodised aluminium
- ⑰ Sliding louvred privacy screens - Copper anodised aluminium (roof level)
- ⑱ Opaque toughened laminated glass privacy screens

Balustrading:

- ⑲ Toughened laminated glass balustrades
- ⑳ Recessed balconies with copper coloured metal balustrades
- ㉑ Juliet balconies with copper coloured metal balustrades
- ㉒ Balconies with copper coloured metal balustrades - Tecu Classic Copper cladding

Roofs:

- ㉓ TECU Classic Copper cladding with integrated photovoltaics
- ㉔ TECU Classic Copper cladding for town houses
- ㉕ TECU Classic Copper Flashing
- ㉖ Sedum green roof finish

Canopies and Soffits:

- ㉗ Canopies - with white rendered fascias and soffits with TECU Classic copper flashing and roofs
- ㉘ Soffit to recessed balconies - white render

Terraces:

- ㉙ Stone (Refer to landscape proposals)
- ㉚ Composite timber decking (Refer to landscape proposals)



Rev.	Date	Description	Project	63-71 High Street, Hampton Hill
1	08.11.2016	Issued for information	Dwg no:	1525 / PA.14
2	28.11.2016	Issued for Planning	Drawing:	Proposed Town House Type 1
<small>NOTES: Do not scale from this drawing. All dimensions in millimeters. All dimensions to be checked on site. All omissions and discrepancies to be reported to the architect immediately. This drawing is © 3s Architects and Designers. Use of these drawings must be authorized by 3s.</small>			Date:	October 2016
Scale:	1:100 @ A1		Rev:	3s
			Tel:	+44 (0)20 8332 99 66 F: +44 (0)20 8332 99 66 W: www.3s-ad.com E: info@3s-ad.com
			17A Princes Road, Richmond upon Thames, Surrey TW9 1DQ	

Planning Application

3s architects and designers

63 - 71 High Street, Hampton Hill

Planning Application 2016

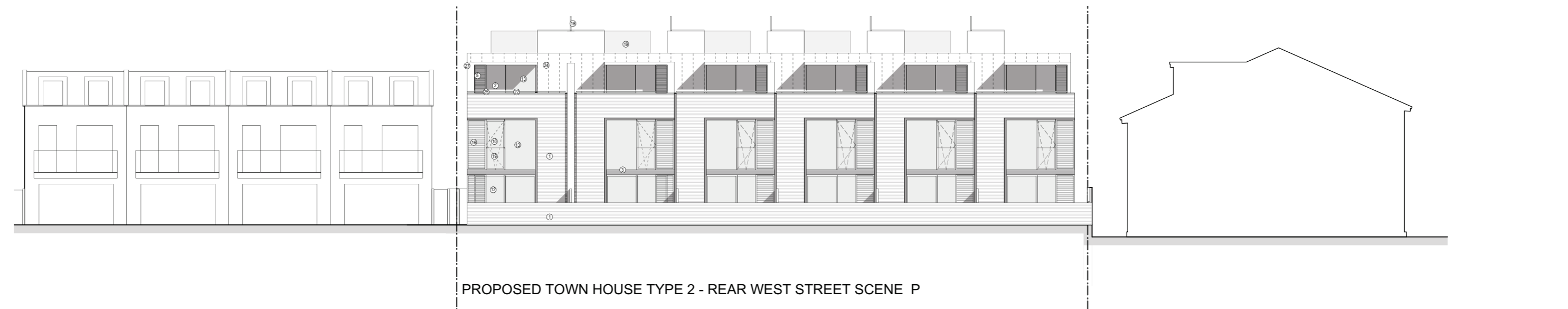
3s architects
interior designers
commercial

15.0 Appendix

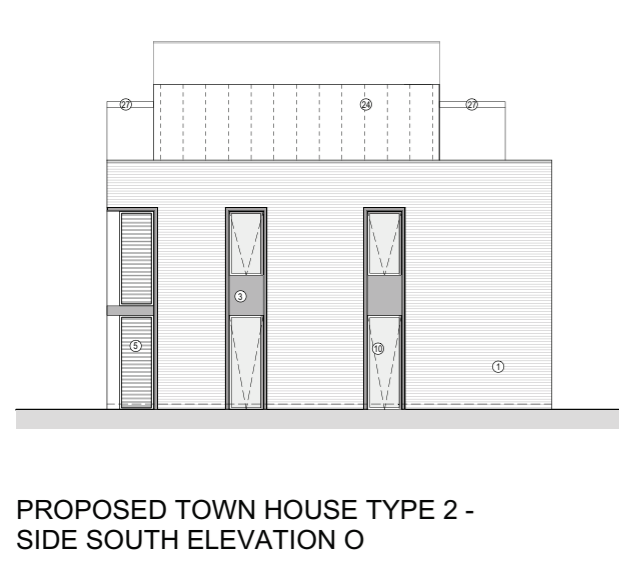
15.1 Proposed Elevations



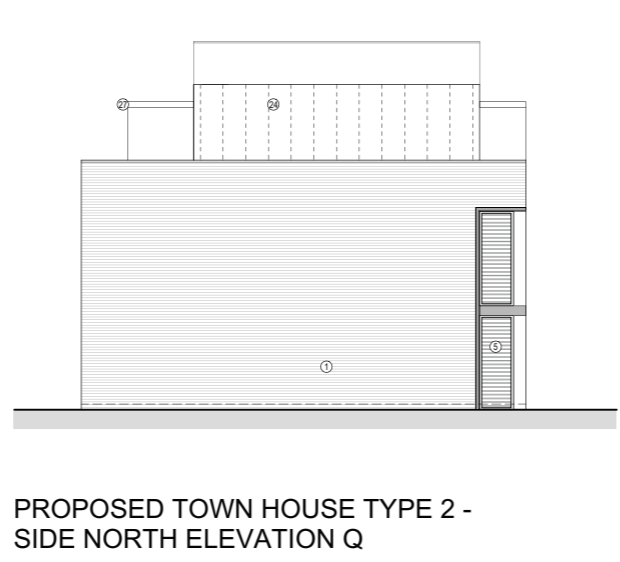
PROPOSED TOWN HOUSE TYPE 2- FRONT EAST ELEVATION N



PROPOSED TOWN HOUSE TYPE 2 - REAR WEST STREET SCENE P



PROPOSED TOWN HOUSE TYPE 2 - SIDE SOUTH ELEVATION O



PROPOSED TOWN HOUSE TYPE 2 - SIDE NORTH ELEVATION Q



PROPOSED TOWN HOUSE TYPE 2 - WEST REAR ELEVATION R

Material description:

Walls:

- ① Yellow fair faced brick in stretcher bond. Final type / colour and mortar colour subject of submission and approval by LPA
- ② White render
- ③ Cladding - TECU Classic Copper
- ④ Cladding - TECU Classic Copper (roof level)
- ⑤ Fixed louvered cladding - TECU Classic Copper (town houses)
- ⑥ Fixed louvered cladding - TECU Classic Copper (roof level)
- ⑦ Shopfront signage zone and cladding - TECU Bronze

Doors & Windows:

- ⑧ Double glazed doors - Copper anodised aluminium frames
- ⑨ Double glazed doors - Copper anodised aluminium frames (roof level)
- ⑩ Double glazed tilt and turn windows - Copper anodised aluminium frames
- ⑪ Double glazed tilt and turn windows - Copper anodised aluminium (roof level)
- ⑫ Double glazed sliding doors - Copper anodised aluminium frame
- ⑬ Fixed frameless double glazed windows
- ⑭ Low ion toughened laminated shopfront glazing
- ⑮ Double glazed sliding rooflight lantern

Privacy Screens:

- ⑯ Sliding louvered privacy screens - Copper anodised aluminium
- ⑰ Sliding louvered privacy screens - Copper anodised aluminium (roof level)
- ⑱ Opaque toughened laminated glass privacy screens

Balustrading:

- ⑲ Toughened laminated glass balustrades
- ⑳ Recessed balconies with copper coloured metal balustrades
- ㉑ Juliett balconies with copper coloured metal balustrades
- ㉒ Balconies with copper coloured metal balustrades - Tecu Classic Copper cladding

Roofs:

- ㉓ TECU Classic Copper cladding with integrated photovoltaics
- ㉔ TECU Classic Copper cladding for town houses
- ㉕ TECU Classic Copper Flashing
- ㉖ Sedum green roof finish

Canopies and Soffits:

- ㉗ Canopies - with white rendered fascias and soffits with TECU Classic copper flashing and roofs
- ㉘ Soffit to recessed balconies - white render

Terraces:

- ㉙ Stone (Refer to landscape proposals)
- ㉚ Composite timber decking (Refer to landscape proposals)



Rev:	Date:	Description:	Project:	
-	08.11.2016	Issued for information	63-71 High Street, Hampton Hill	
-	28.11.2016	Issued for Planning	Dwg no:	
			1525 / PA.15	
Drawing: Proposed Town House Type 2			Date:	T +44 (0)20 8332 99 66 F -91 W www.3s-ad.com E info@3s-ad.com 17A Princes Road, Richmond upon Thames, Surrey TW10 6DQ
NOTES: Do not scale from this drawing. All dimensions in millimeters. All dimensions to be checked on site. All omissions and discrepancies to be reported to the architect immediately. This drawing is © 3s Architects and Designers. Use of these drawings must be authorised by 3s.			Date: October 2016 Scale: 1:100 @ A1	

Planning Application

3s architects and designers