

5.0 Contextual Analysis - Existing Photographs

5.4 High Street Hampton Hill - Building Types and Scale



Tall 3 storey office development



4 storey residential development backing on to Bushy Park



Tall 2.5 + 3 storey office development



Tall 3+ storey mixed use development



Tall 5 storey flatted development backing on to Bushy Park, with tall retail units to street frontage



The Pavilion residential high rise and public car park

5.0 Contextual Analysis - Existing Photographs

5.5 Views from Bushy Park



The Site 63-65 and 67-71 from Bushy Park



The Pavilion 5 storey flatted development



3 storey + roofspace residential development



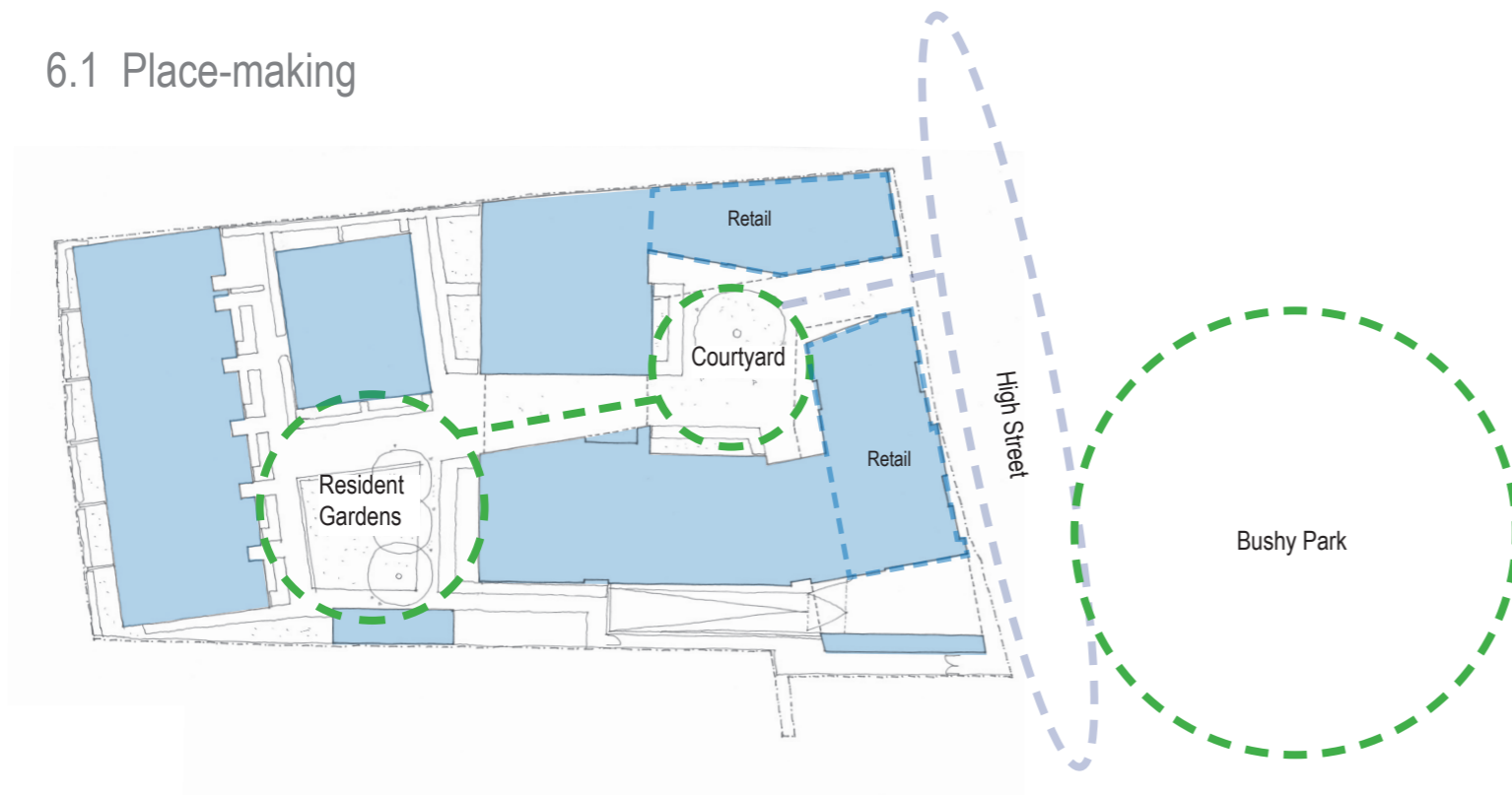
View into Bushy Park from the site second floor 63-65

63 - 71 High Street, Hampton Hill

Planning Application 2016

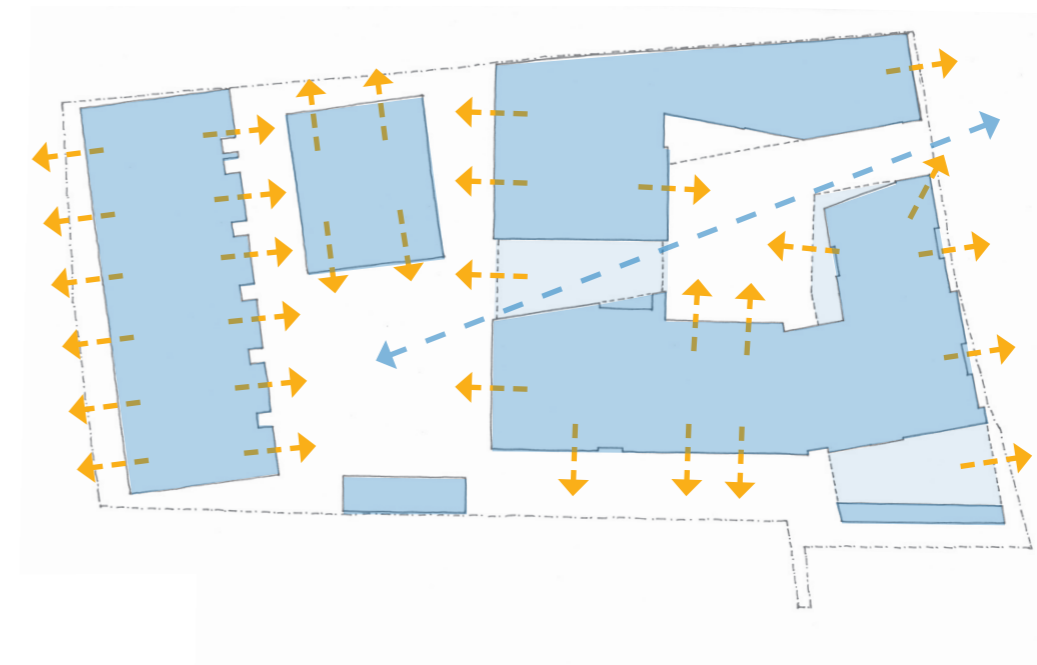
6.0 Design Proposals - Site Concept

6.1 Place-making

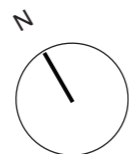


- Create an active frontage to the High Street
- Create and connect a series of welcoming landscaped spaces
- Entry courtyard animated by retail units and landscaping
- A communal garden square for residents

6.2 Views, light, visual connection

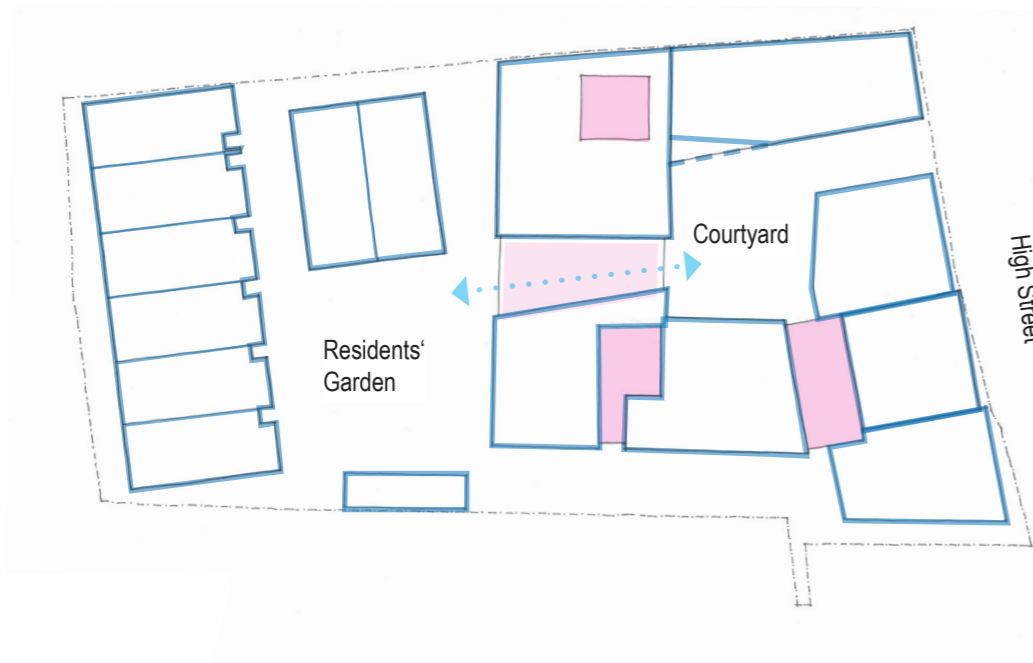


- Careful consideration to orientation and screening mitigates overlooking
- Each dwelling benefits from connection to spaces of interest
- Responding to inter-relationships to adjoining poor neighbour development to the south



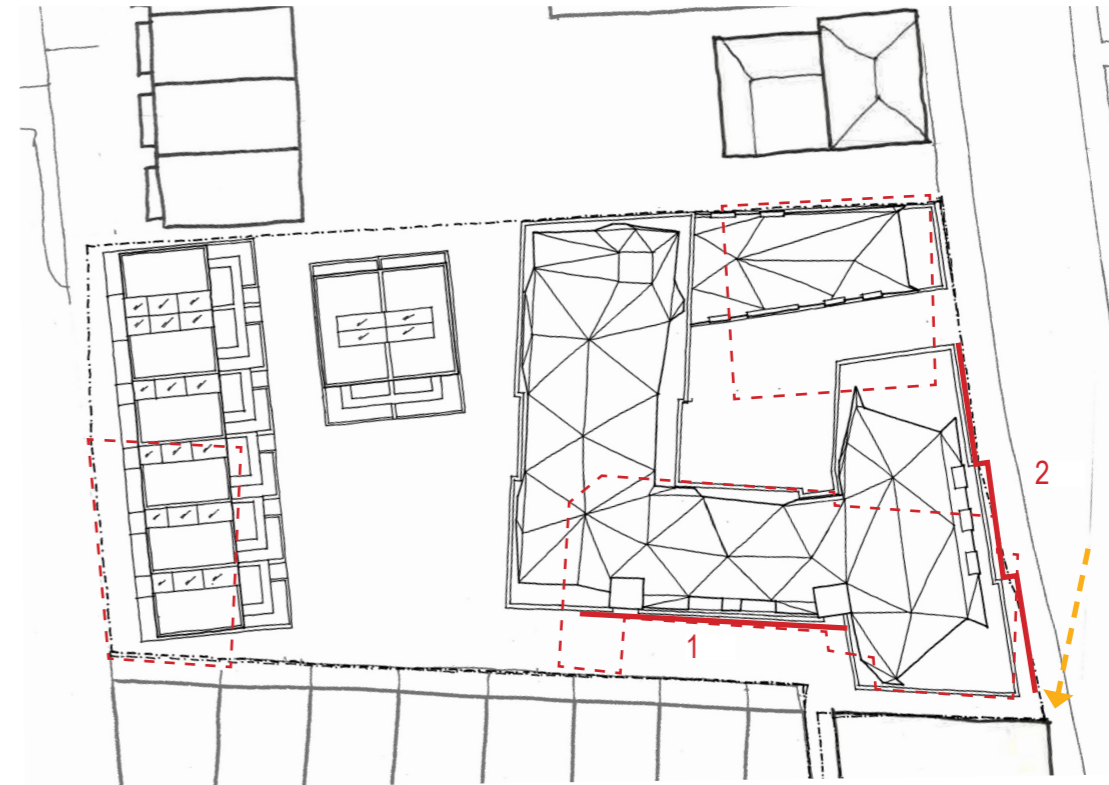
6.0 Design Proposals - Site Concept

6.3 Breaking the Building into Legible Elements



- Sub-divide building into smaller blocks and introduce elements of contextual residential scale
- Visible gaps defined as routes through the site, entrances and vertical circulation
- Step and articulate the facades to create depth, rhythm and vertical emphasis

6.4 Building Lines



- 1. Apartment building set on line of existing building 63 - 65 to south
- 2. Street frontage stepped to create vertical rhythm, articulate curve of street and provide clear view of corner to 61 High Street

63 - 71 High Street, Hampton Hill

Planning Application 2016

