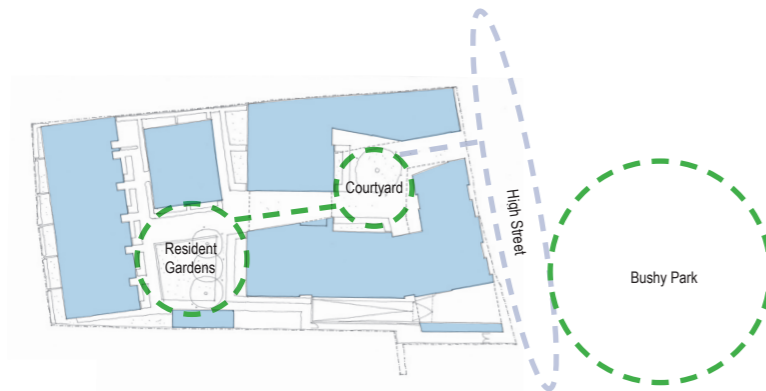


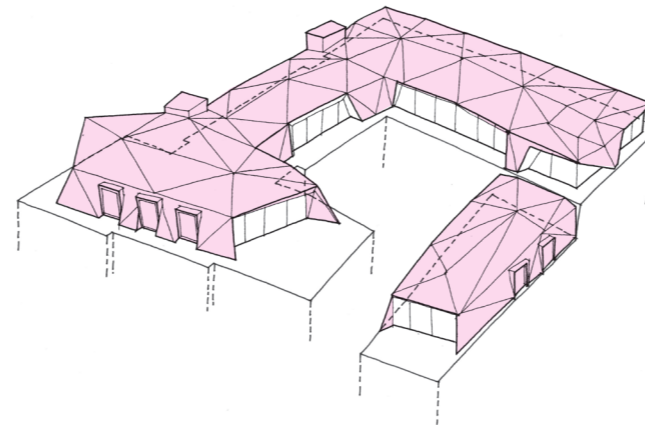
7.0 Design Proposals - Architecture

7.3 Building Concept

- Place making:
 - Two interlinked courtyards
 - Cars underground;
 - Space for people and landscape;



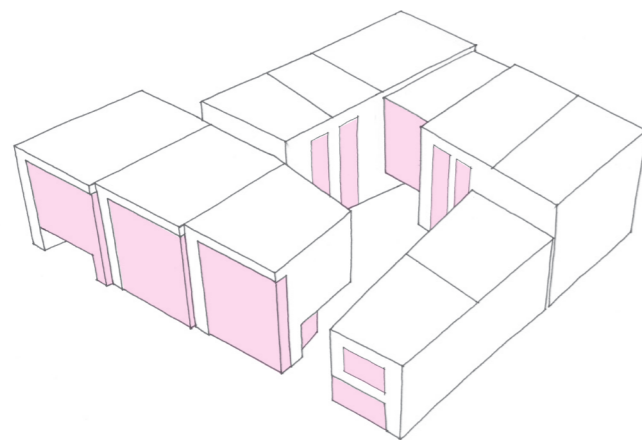
- A sculptural roof form:
 - Faceted and angled to break down scale;
 - Set back from lower floors to diminish scale;
 - Integrated photovoltaics to provide renewable energy and contribute to carbon reduction;



- Recessed Balconies to provide:
 - Depth and relief to facade;
 - Privacy to bedrooms behind balconies;
 - Essential amenity space;
 - Life to the street;



- Solidity and permeability:
 - Carved brick forms with metal and glass facade infill;
 - More open metal facade to the High Street with brick piers and parapets, and stacked windows and recessed balconies;
 - Tall punctured openings within courtyard;



- Repeated corner living spaces:
 - Light and airy living spaces sit forward and recessed balconies set back;
 - Open views to the park;
 - Legibility and verticality to facade;
 - Corner returns reference oriel window to no.61;

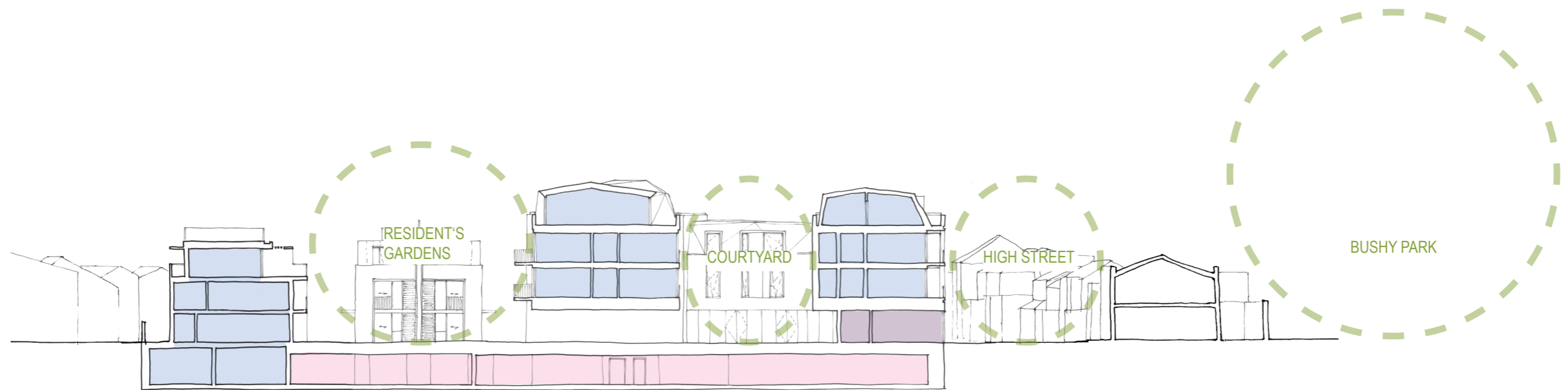
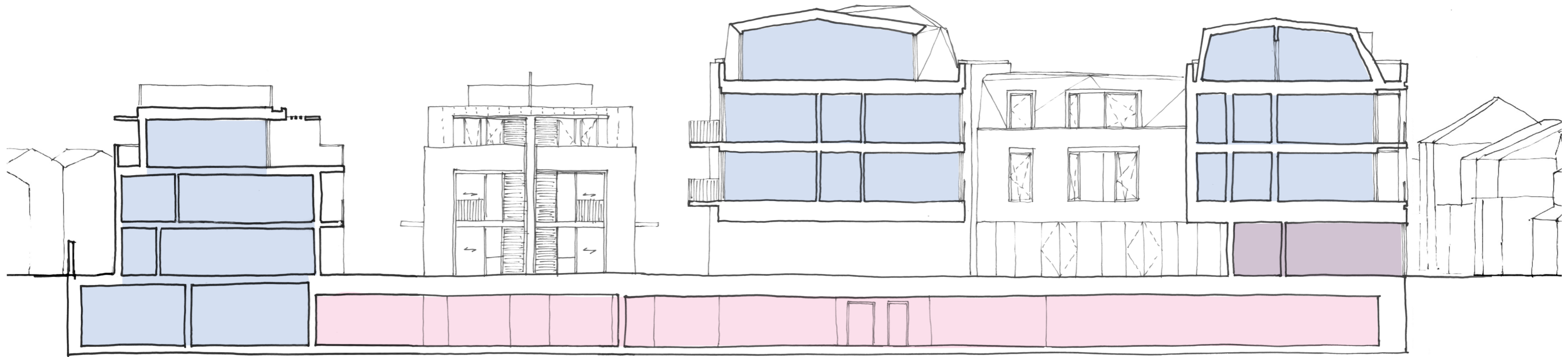


- Sliding screens:
 - Movement and Life;
 - Privacy to balconies and bedrooms;
 - Layering, depth and variety to facade;
 - Verticality and human scale;



7.0 Design Proposals - Architecture

7.4 Proposed Site Section 1:200 & 1:400 scale



0m 1m 2.5m 5.0m 10m 20m

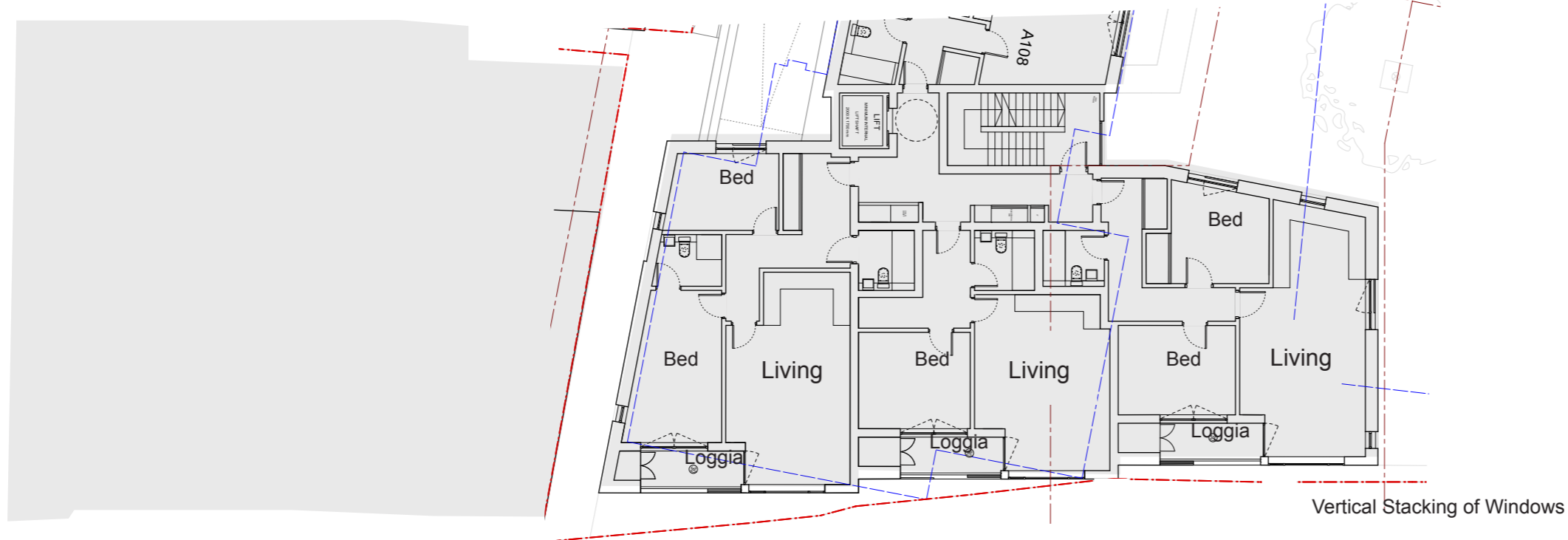


63 - 71 High Street, Hampton Hill

Planning Application 2016

7.0 Design Proposals - Architecture

7.5 Proposed Street Scene



- Break the scale of the south building into 3 equal bays
- Break down each bay with a matrix of elements to reflect smaller scale contextual references
- Articulate and step the facade along the High Street
- Bring the building to ground and create greater verticality to the facade
- Take references from neighbouring building including: retail and signage zones; horizontal brick courses; and window proportions
- Step scale down to north
- The sculptural form of the roof to the set back top level is designed to make reference and respond to the variety of roofs in the wider context



63 - 71 High Street, Hampton Hill

Planning Application 2016

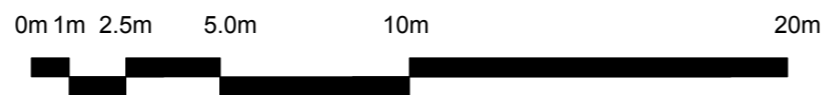
8.0 Design Proposals - Proposed Plans

8.1 Site Plan 1:200 scale



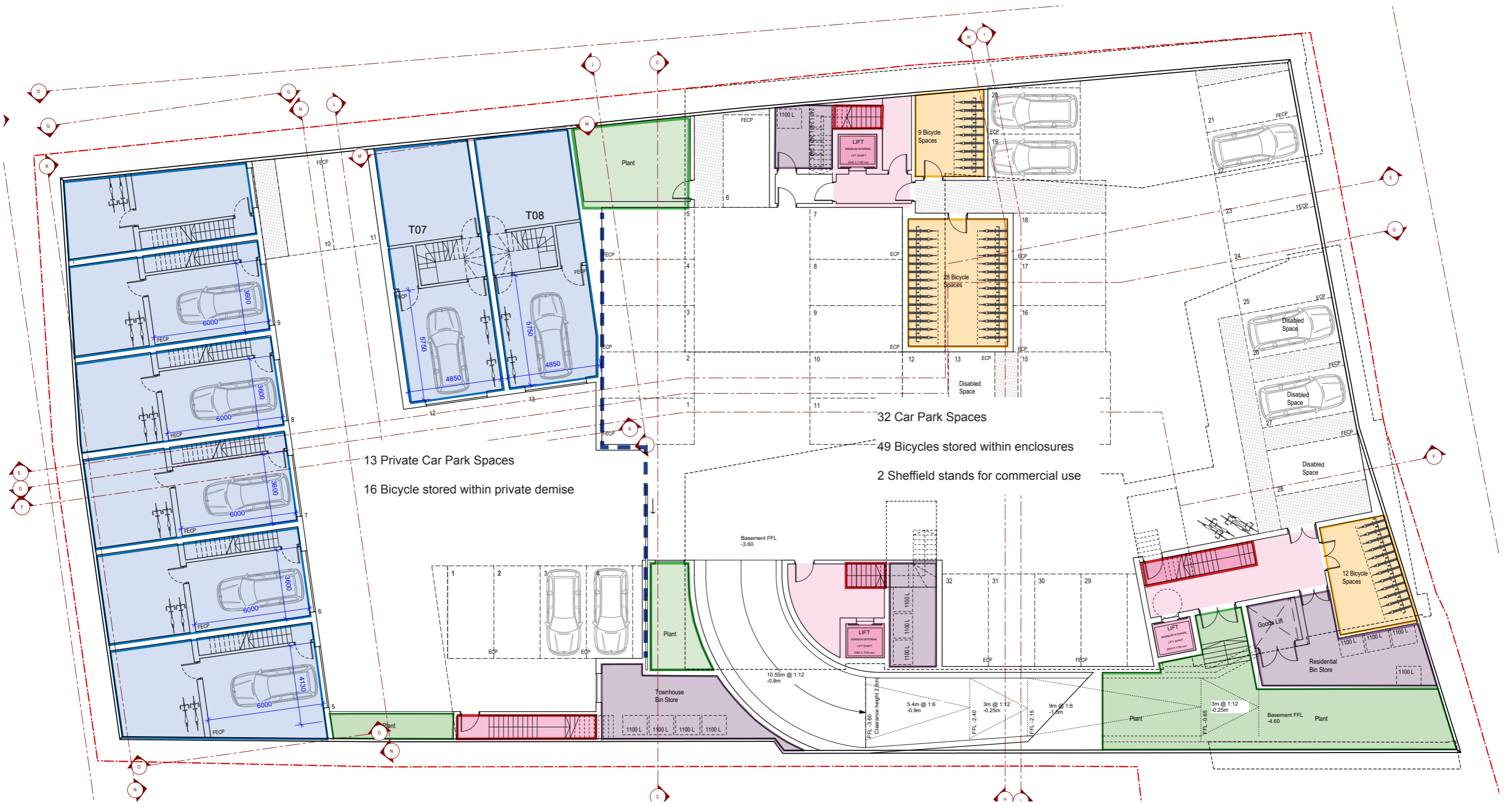
63 - 71 High Street, Hampton Hill

Planning Application 2016



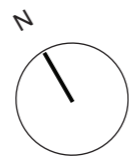
8.0 Design Proposals - Proposed Plans

8.1 Basement Plan 1:200 scale



63 - 71 High Street, Hampton Hill

Planning Application 2016



0m 1m 2.5m 5.0m 10m 20m



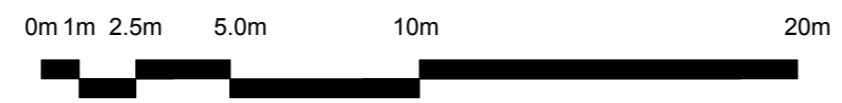
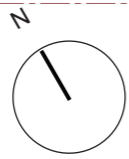
8.0 Design Proposals - Proposed Plans

8.1 Ground Floor Plan 1:200 scale



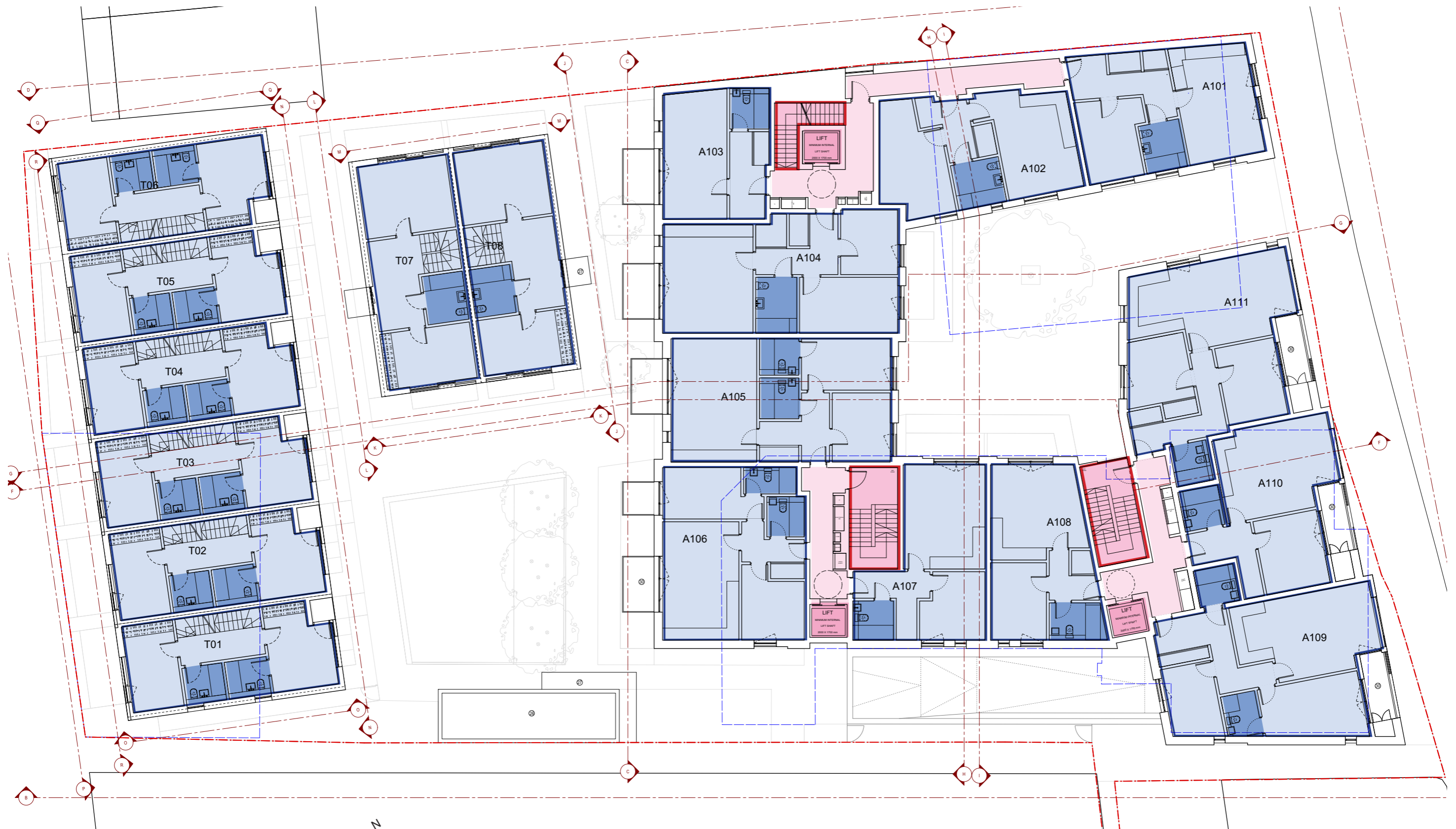
63 - 71 High Street, Hampton Hill

Planning Application 2016



8.0 Design Proposals - Proposed Plans

8.1 First Floor Plan 1:200 scale



63 - 71 High Street, Hampton Hill

Planning Application 2016

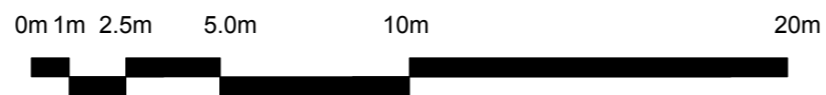
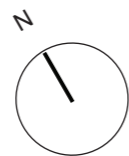
8.0 Design Proposals - Proposed Plans

8.1 Second Floor Plan 1:200 scale



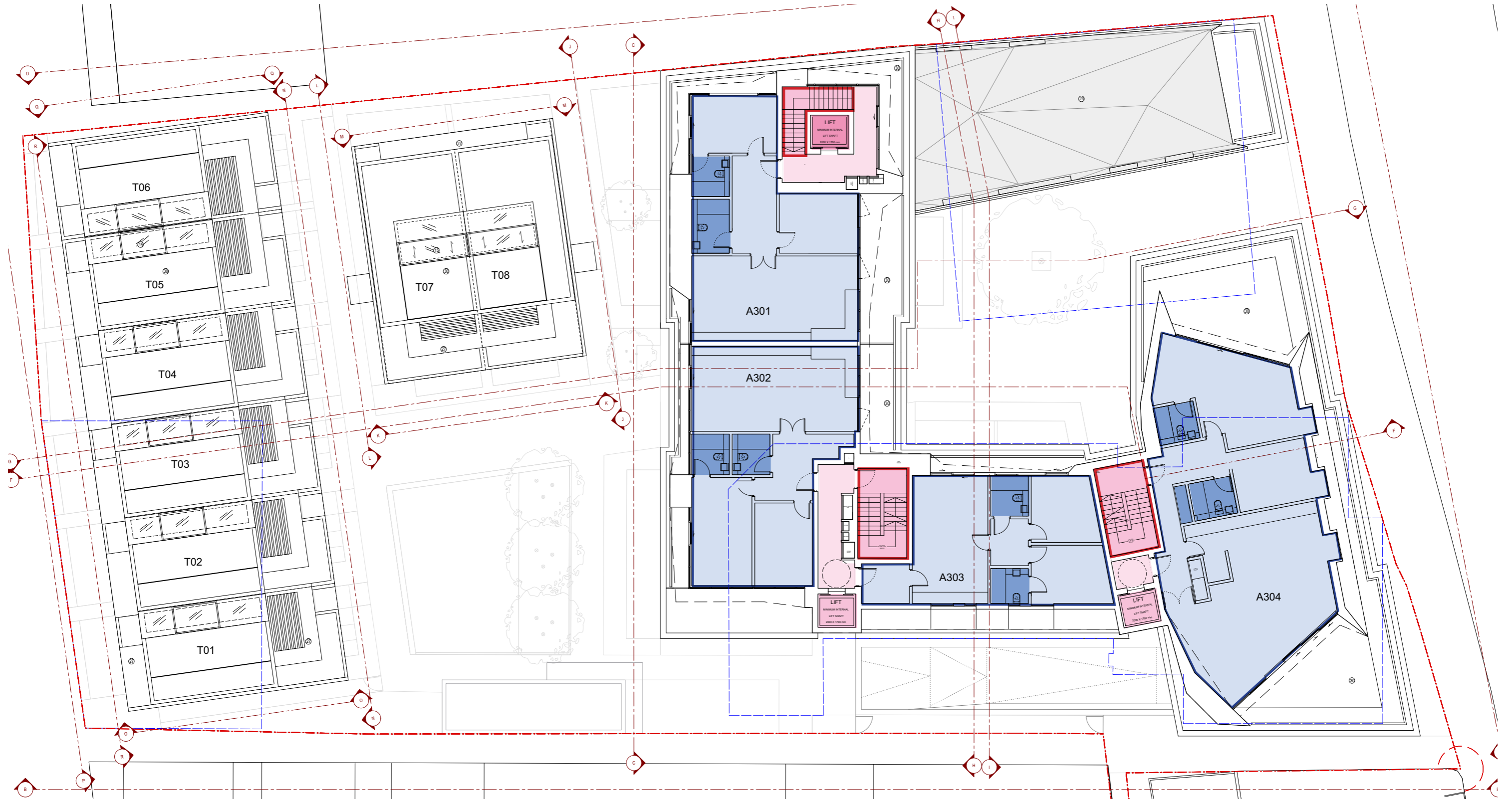
63 - 71 High Street, Hampton Hill

Planning Application 2016



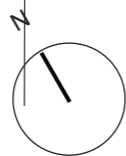
8.0 Design Proposals - Proposed Plans

8.1 Third Floor Plan 1:200 scale



63 - 71 High Street, Hampton Hill

Planning Application 2016

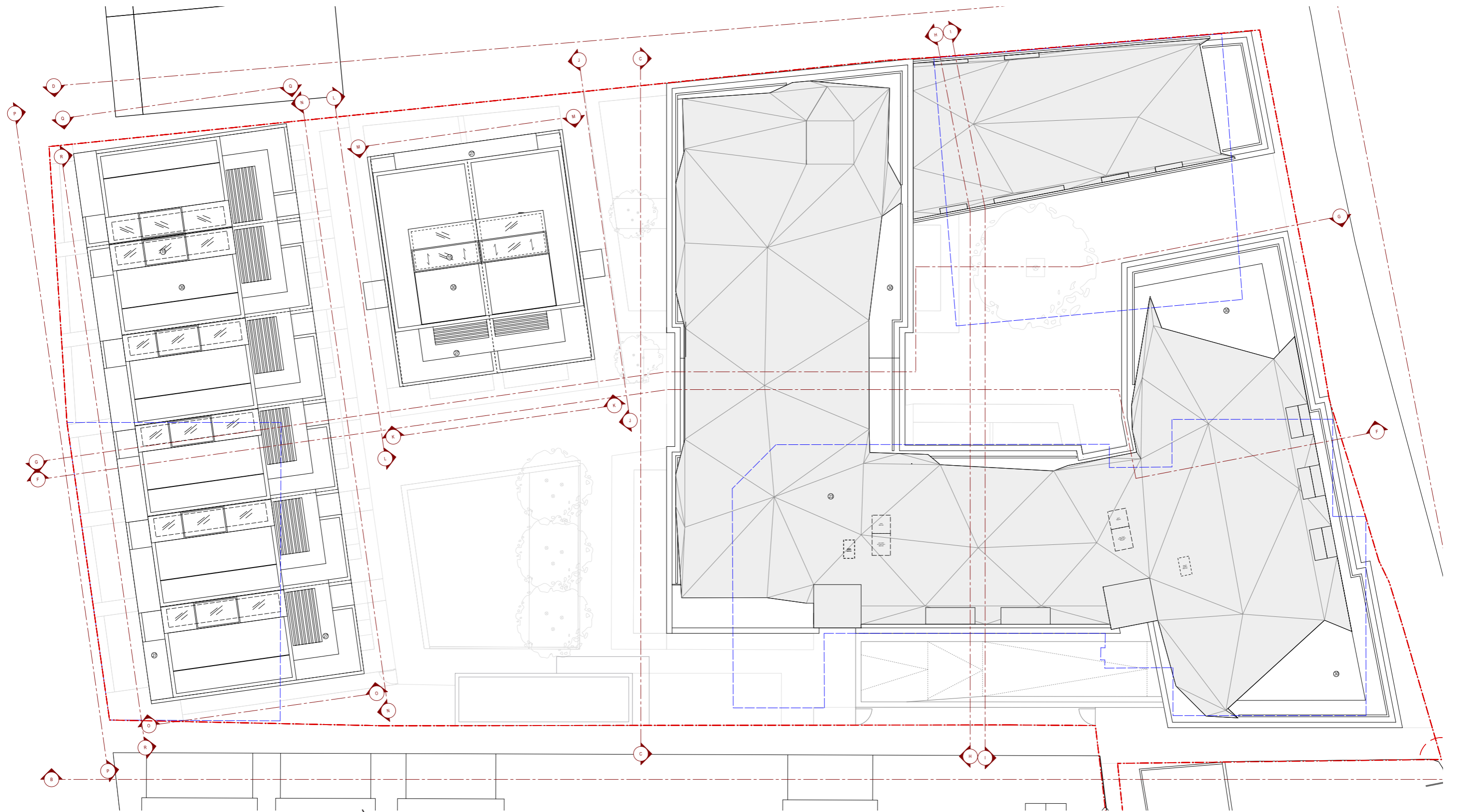


0m 1m 2.5m 5.0m 10m 20m



8.0 Design Proposals - Proposed Plans

8.1 Roof Plan 1:200 scale



63 - 71 High Street, Hampton Hill

Planning Application 2016

