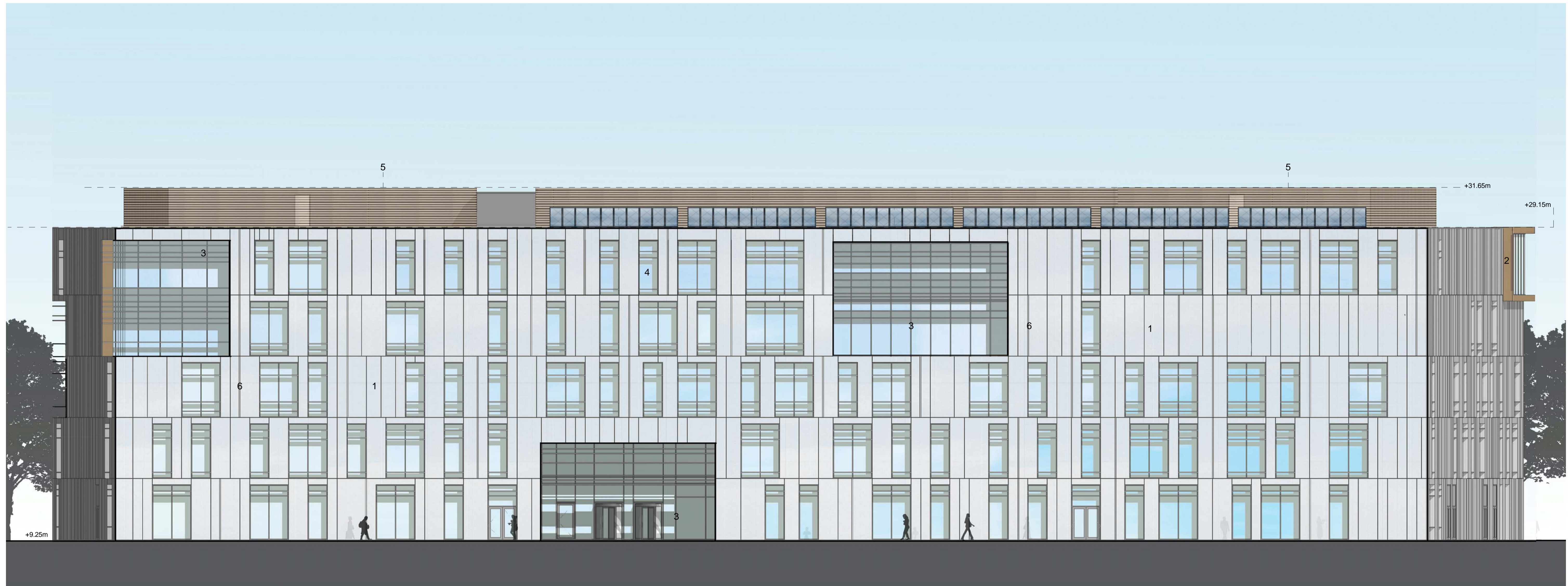


100
Millimetres
0 10



Material Key



- 1 Anodised Aluminium Rainscreen Cladding and Solar Shading - Neutral finish - ETM or KME system
- 2 Anodised Aluminium Rainscreen Cladding - Bronze Finish - ETM or KME system
- 3 PFC aluminium curtain walling, external windows and doors - Grey
- 4 3GG Cool-Lite glazing to windows and curtain walling
- 5 Terracotta baguettes as plant screening
- 6 Vertical facade strip lighting GVA or similar

SAFETY, HEALTH AND ENVIRONMENTAL INFORMATION

In addition to the hazards/risks normally associated with the types of work detailed on this drawing, note the following:

CONSTRUCTION

MAINTENANCE/CLEANING

DECOMMISSIONING/DEMOLITION

It is assumed that all works will be carried out by a competent contractor working, where appropriate, to an approved method statement

Rev.	Date	Description	By	Chkd	App'd
P02	27.05.16	Brise soleil updated	KD	CW	CW
P01	01.04.16	Updates from planning response	KD	CW	CW

Drawing Status: **PLANNING** Submittal: **S2**

ATKINS Euston Tower
286 Euston Road
London
NW1 3AT
Tel: +44 (0) 207 121 2000
Fax:
www.atkinglobal.com

Copyright © Atkins Limited (2013)

Client: **Richmond upon Thames College**

Project Title		Richmond upon Thames College			
Drawing Title		Proposed South Elevation			
Scale	Designed	Drawn	Checked	Authorised	
Original Size	Date	Date	Date	Date	
A1	18.03.2016	18.03.2016	18.03.2016	18.03.2016	
Drawing Number				Revision	
5137894-ATK-MB-ZZ-DR-A-2001				02	