

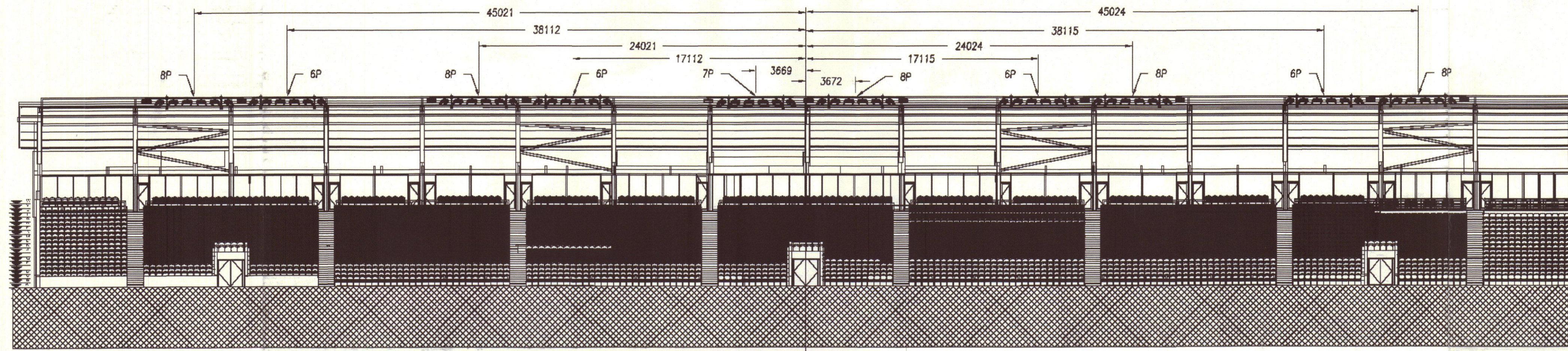
NOTES:

1. THIS DRAWING REPRESENTS A PICTORIAL VIEW OF FIXTURE CONFIGURATIONS AS THEY WOULD BE INSTALLED ACCORDING TO MUSCO LIGHTING DESIGN 14312BH.
2. UPON REVIEW AND APPROVAL OF THIS MOUNTING CONFIGURATION, MUSCO WILL WORK WITH FACILITY ENGINEER ON CONNECTION DETAIL INFORMATION.
3. MUSCO WILL REQUIRE STRUCTURAL STEEL FABRICATION DRAWINGS OF EACH GRANDSTAND SO THAT MATERIAL SIZING CAN BE ADDRESSED APPROPRIATELY. UPON RECEIPT OF THE DRAWINGS, MUSCO CAN MORE ACCURATELY MAKE MORE DETAILED CONCEPT DRAWINGS OUTLINING MATERIAL TO BE USED AND WEIGHTS OF COMPONENTS.
4. MUSCO WILL ALSO WORK WITH ELECTRICAL CONTRACTOR ON LOCATION AND ROUTING OF ELECTRICAL SERVICE TO DRIVER ENCLOSURE LOCATIONS AS WELL AS WIRING BETWEEN CROSSARMS AND THE DRIVER ENCLOSURE.
5. ELEVATIONS ARE BASED OFF DATUM LINE, WHICH IS ASSUMED TO BE FIELD LEVEL.
6. MOUNTING CONCEPTS SHOWN ARE PRELIMINARY AND ARE SUBJECT TO CHANGE PENDING VERIFICATION OF FIELD LEVEL AND HEIGHTS ASSOCIATED.
7. FOR MORE DETAILED INFORMATION ON CROSSARMS SEE DRAWING 14312BX1

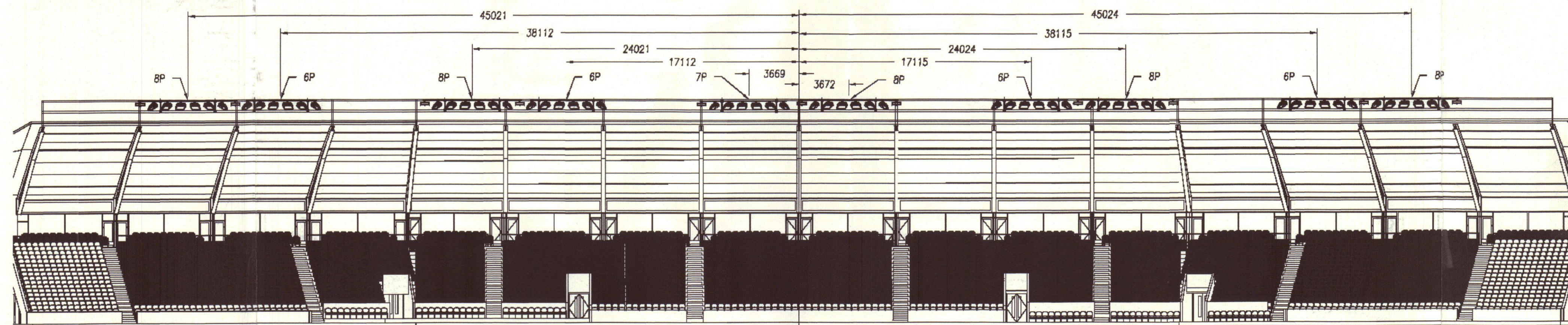
CROSSARM WEIGHTS (APPROX.)

| | |
|--------------------------|------------------|
| 6P GUARD RAIL XARM MOUNT | 513 lbs [233 kg] |
| 7P GUARD RAIL XARM MOUNT | 558 lbs [253 kg] |
| 8P GUARD RAIL XARM MOUNT | 603 lbs [273 kg] |

This Drawing is
PRELIMINARY
Approval Pending



EAST STANDS



WEST STANDS

The technical information provided on this drawing is the confidential property of Musco Sports Lighting, LLC and reproduction of this drawing, distribution, or use of this information other than its limited, intended purpose as to this project without express written permission of Musco Sports Lighting, LLC is prohibited.

Harlequins RFC Rugby
Twickenham, London, UK
FIXTURE CONFIGURATION DRAWING

CORPORATE OFFICE:
P.O. Box 808
100 1st Avenue West
Osaka, Iowa 52577
+1-800-825-6020
+1-641-673-0411



REVISIONS:

DATE:

JOB NUMBER: 143128
DRAWN BY: JFM
CHECK BY:
REPRESENTATIVE:
SCALE: 1:200
DATE: 14JUN16
DRAWING NUMBER: 143128X2
1 OF 1 SHEETS