

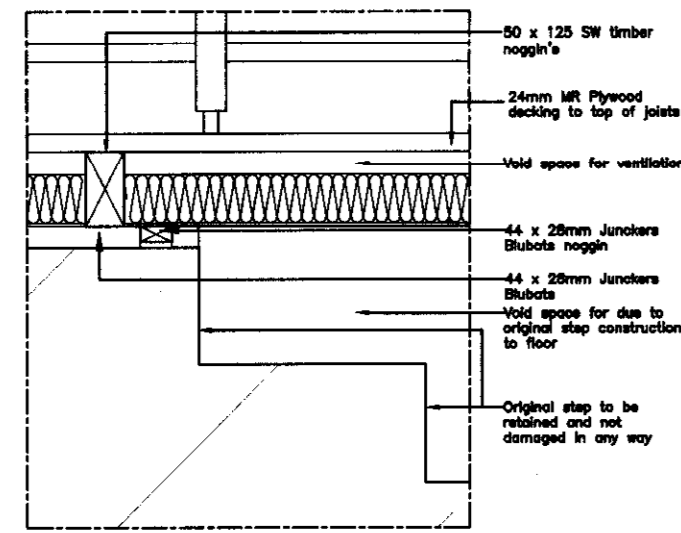
© NIGHTINGALE ARCHITECTS LTD  
 Registered office: 101 Queen Victoria Street, London EC4V 4EQ  
 Company registered in England and Wales No. 4599129  
 No part of this drawing may be reproduced without written consent.  
 All contractors must visit site and be responsible for taking and  
 checking all dimensions relating to this work.  
 Do not scale from this drawing.

Rev	Date	By	Amendment

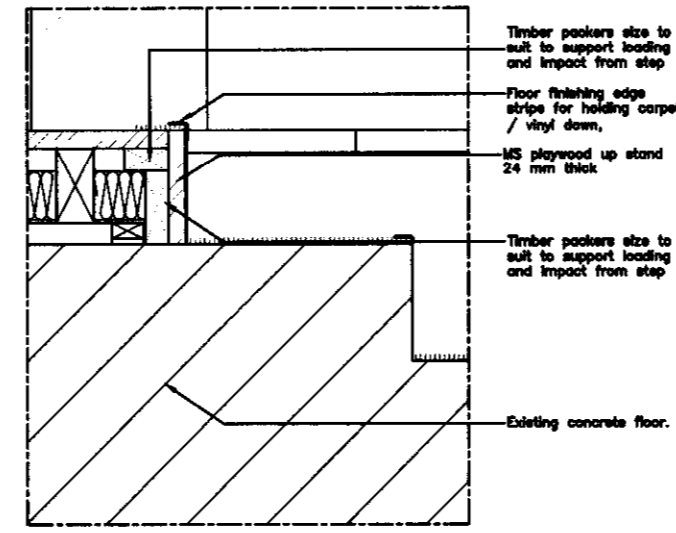
06/0632/ Ldc

Environmental Protection and Customer Services PLANNING	Refer to:
01 MAR 2006	Copies to:

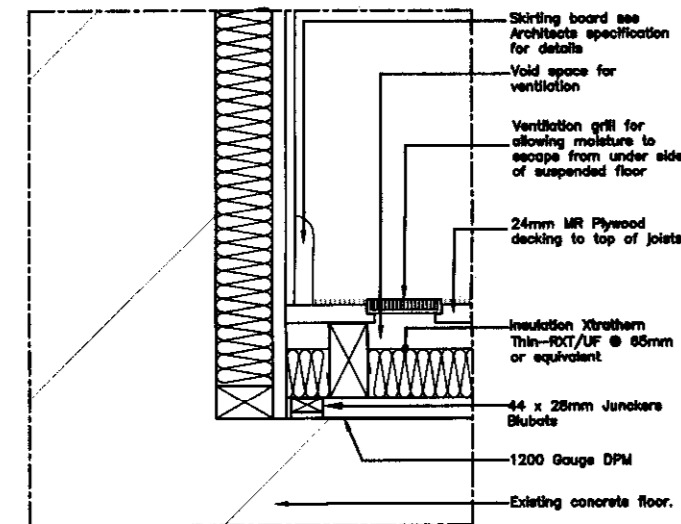
DETAIL 22  
03767 / A(3)2



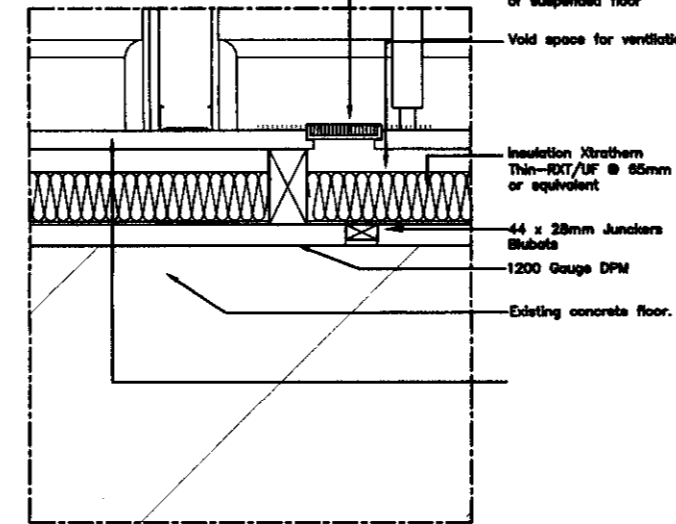
DETAIL 25  
03767 / A(3)2



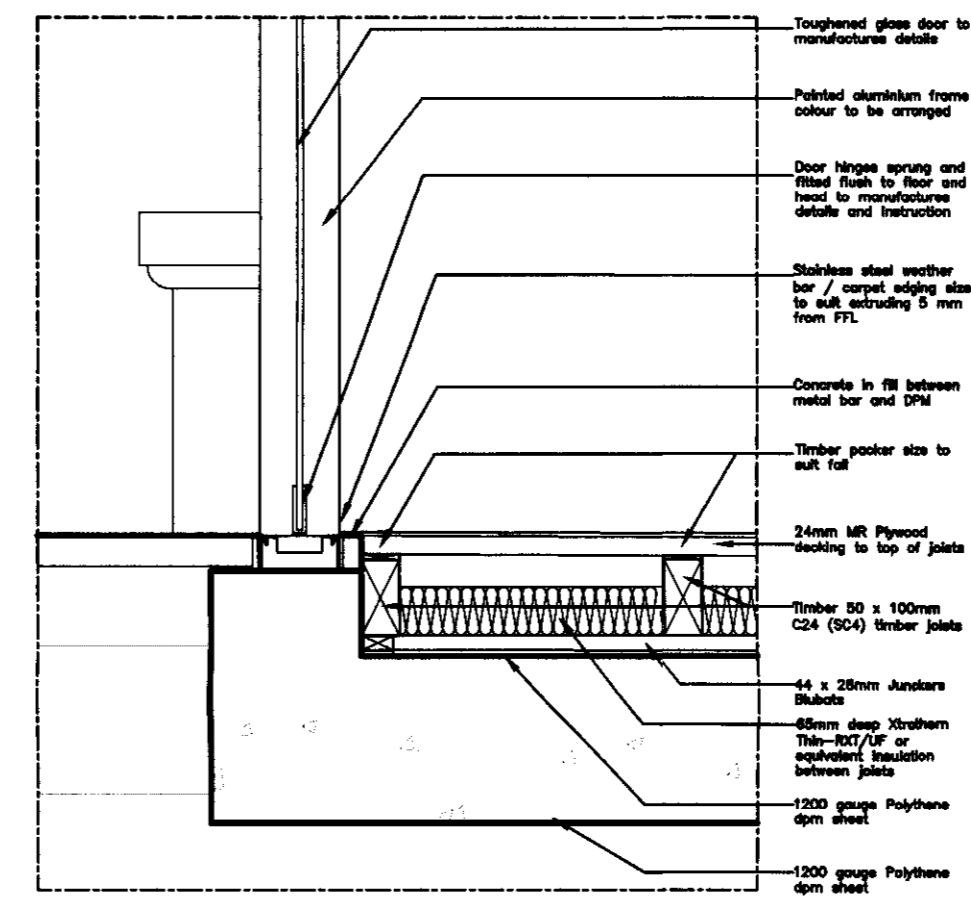
DETAIL 21  
03767 / A(3)2



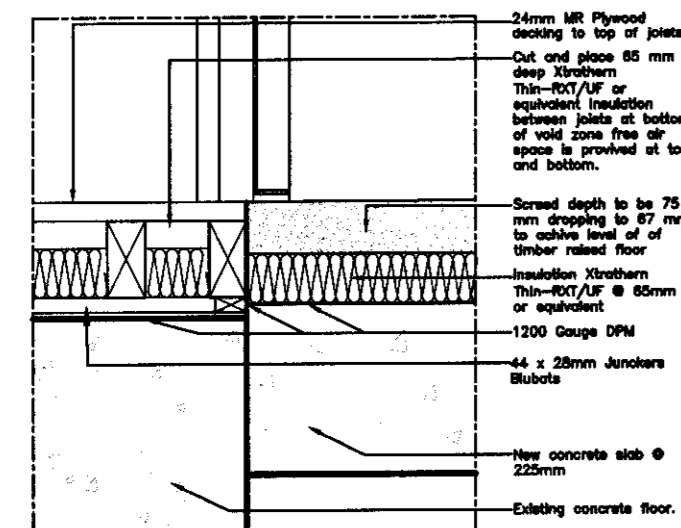
DETAIL 24  
03767 / A(3)2



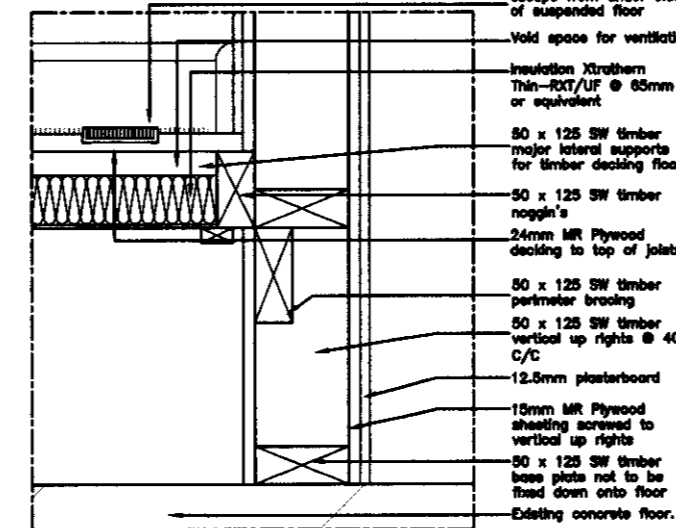
DETAIL 1  
03767 / A(3)5



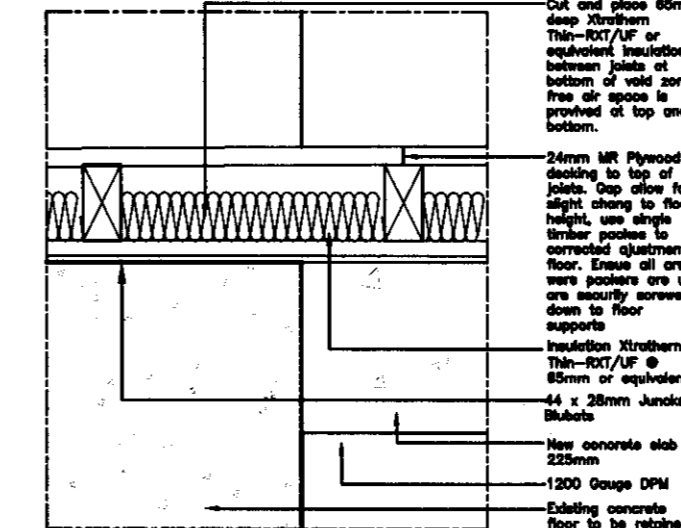
DETAIL 4  
03767 / A(3)5



DETAIL 23  
03767 / A(3)2



DETAIL 26  
03767 / A(3)2



RECEIVED  
01 MAR 2006  
PLANNING

**TRIBAL** A member of Tribal Group plc

Harwell London Brighton Cardiff Rochdale  
Bristol Exeter CapeTown Liverpool Dartford

**NIGHTINGALE** architects  
associates ■■■■

Block A, Littlebrook Business Park, Dartford, Kent, DA1 9PZ  
Tel: +44 (0)13 2262 7898  
Fax: +44 (0)13 2220 0155  
Email: dartford@nightingalesassociates.com

Client: St. MARY'S COLLEGE TWICKENHAM  
Project: ALTERATIONS TO CHAPEL UNDERCROFT AND L.R.C

Drawing: RAISED FLOOR DETAILS

Date: May 2005 Scale: 1:10 Drawn by: mh  
Checked by:

Project No: 03767 Drawing No: A(3)02 Revision: