

Type / Species	Specification	Density/Percentage
<b>Trees</b>		
1 Alnus glutinosa	400-450cm height, RB, 4x, multi-stem-bushy, 3 stems min	As shown
5 Betula pendula	400-450cm height, RB, 4x, multi-stem-bushy, 3 stems min	As shown
5 Betula utilis jacquemontii	400-450cm height, RB, 4x, multi-stem-bushy, 3 stems min	As shown
2 Prunus avium 'Plena'	400-450cm height, RB, 4x, multi-stem-bushy, 3 stems min	As shown
4 Liquidambar styraciflua	16-18 cm girth, height 400-500cm, RB	As shown
1 Liquidambar styraciflua	12-14 cm girth, height 300-400cm, RB	As shown
2 Pinus sylvestris	50-60 cm girth, height 600-700cm, RB, semi-mature, clear stem min 200cm	As shown
<b>Hedging</b>		
124 Acer campestre	Hedging plants, 80-100cm, 2 x tr., rootballed	2.5/linear m, staggered row, 33%
124 Carpinus betulus	Hedging plants, 80-100cm, 2 x tr., rootballed	2.5/linear m, staggered row, 33%
124 Malus sylvestris	Hedging plants, 80-100cm, 2 x tr., rootballed	2.5/linear m, staggered row, 33%
<b>Climbers</b>		
4 Lonicera periclymenum	100-150cm height, 10l pot, caned, several shoots, 3 breaks	As shown
4 Clematis montana var. 'Grandiflora'	150cm height, 10l pot, Caned x3, several shoots, 5 breaks	As shown
<b>Native hedge mix</b>		
60 Acer campestre	40-60cm height, B, 1+1; Transplant - seed raised. Tree shelter and weed mat	1/m2
119 Corylus avellana	40-60cm Height, B, 1+1; Transplant - seed raised; branched; 2 brks. Tree shelter and weed mat	1/m2
476 Crataegus monogyna	40-60cm height, B, 1+1; Transplant - seed raised. Tree shelter and weed mat	1/m2
60 Euonymus europaeus	40-60cm height, B, 1+1; Transplant - seed raised; branched; 3 brks. Tree shelter and weed mat	1/m2
1188 Hedera hibernica	40-60cm height, 2L. Several shoots; 5 brks. Tree shelter and weed mat	1/m2
60 Ilex aquifolium	40-60cm height, 2L. Leader with laterals	1/m2
119 Prunus spinosa	40-60cm height, B, 1+1; Transplant - seed raised; branched; 2 brks. Tree shelter and weed mat	1/m2
60 Rosa canina	40-60cm height, 2L. Branched; 3 brks. Tree shelter and weed mat	1/m2
60 Sambucus nigra	40-60cm height, B, 1+0; Seeding; branched; 2 brks. Tree shelter and weed mat	1/m2
60 Sorbus aucuparia	40-60cm height, B, 1+1; Transplant - seed raised. Tree shelter and weed mat	1/m2
60 Viburnum opulus	40-60cm height, B, 1+1; Transplant - seed raised; branched; 2 brks. Tree shelter and weed mat	1/m2
<b>Ornamental shrubs</b>		
14 Buddleja 'Pink delight'	80-100cm height, 10l	15% - 1/m2
18 Ceanothus 'Puget blue'	10l. bushy, 6 breaks	20% - 1/m2
14 Ficus carica 'Brown turkey'	80-100cm height, 15l, Frame, branched, 5 breaks	15% - 1/m2
14 Rosa 'Roseaie de l'Hay'	60-80cm height, 4l. bush, 5 breaks	15% - 1/m2
14 Spiraea nipponica	60-80cm height, 10l, bushy, 9 breaks	15% - 1/m2
18 Viburnum rhytidophyllum	60-80cm height, 10l, bushy, 5 breaks	20% - 1/m2
<b>Groundcover</b>		
43 Ajuga reptans	2l pot	6/m2
431 Dryopteris filix-mas	2l pot	5/m <sup>2</sup>
14 Euonymus fortunei	5l pot	5/m <sup>2</sup>
528 Galium odoratum	2l pot	12/m <sup>2</sup>
23 Lonicera nitida	5l pot	5/m <sup>2</sup>
90 Luzula sylvatica	2l pot	6/m2
93 Nepeta 'Six hill giant'	2l pot	6/m2
22 Vinca major	2l pot	6/m2
<b>Lawn</b>		
Turf Lindum L7 - Festival	NA	NA
<b>Bulbs</b>		
32 Hyacinthoides non-scripta	NA	groups of 30
16 Crocus tommasinianus	NA	groups of 30

Species	%	Species	%
Acer campestre	5%	Prunus spinosa	10%
Corylus avellana	10%	Rosa canina	5%
Crataegus monogyna	40%	Sambucus nigra	5%
Euonymus europaeus	5%	Sorbus aucuparia	5%
Hedera hibernica (total number @ 1/m2)	100%	Taxus baccata	5%
Ilex aquifolium	5%	Viburnum opulus	5%

**OUTLINE SPECIFICATION NOTES**

**GENERAL**  
All supply, planting and other landscape works to be in accordance with relevant British Standards and Codes of Practice. Works to be undertaken by a competent and accredited landscape contractor with 12months Defects Liability/ in contract maintenance. Following that maintenance works shall be undertaken in accordance with the Landscape Management Plan, LUC 2016.

**PLANTING METHODOLOGY**  
**Soil**  
Soil to be free of pests, disease, fungus and foreign matter. Do not use topsoil contaminated with subsoil, rubbish or other materials that are corrosive, explosive, flammable, hazardous to human or animal life or detrimental to healthy plant growth. The Contractor shall appoint a suitably qualified and approved, independent Soil Scientist to undertake the sampling and testing of the soil materials considered for importation. An approved Soil Scientist is: Tim O'Hare Associates LLP, Howbery Park, Wallingford, Oxon, OX10 8BA, Tel: 01491 822653, www.toha.co.uk  
Subsoil to be in accordance with BS 3682 'Specification for topsoil'. For trees planted in hard landscape a load bearing growing medium will be necessary. This will be Urban tree planting medium, Grade: 0.6-2 mm. Green compost for soil amelioration to be incorporated into soil for tree and shrub planting to be in accordance with BS1 PAS 100:2011 or current revision and sourced from a PAS 100 compliant facility. Fertilizer to be incorporated into soil for tree and shrub planting: Scotts Enmag CRF (11%N:22%P2O5:9%K2O:6%MgO). Prepare undisturbed topsoil in accordance with BS 4428 'Code of Practice for general landscape operations': Break up hard ground thoroughly, remove visible roots and large stones with a diameter greater than 50 mm, dig areas covered with turf over to full depth of topsoil and treat weeds at appropriate times with a suitable translocated non-residual herbicide. Prepare subsoil by excavating/placing fill to the required profiles, loosening thoroughly when ground conditions are reasonably dry to a depth of 450mm and removing stones larger than 50mm, arisings, contaminants, debris and builders' rubble. Spread topsoil in layers of layers of 150 mm maximum depth and gently firm each layer before spreading the next. After spreading topsoil, when weather and ground conditions are suitably dry and non-plastic, the soil profile shall be ripped at 300mm centres to a minimum depth of 300mm (grass areas) or 600mm (shrubs beds, hedges) to decompact the soils and key in the topsoil and subsoil layers. Any large, compacted lumps of soil shall be broken down by further appropriate cultivation (in accordance with BS 4428) to produce a fine tilth suitable for planting (<30mm), turfing and seeding (<10mm). Cultivations shall ensure that the topsoil is fully aerated. In order to avoid physical degradation to the soil during all phases of soil handling (e.g. spreading, cultivation, amelioration, planting, turfing and seeding), soil handling operations shall be carried out when soil is non-plastic (friable) in consistency (i.e. at least 5% below the soil's lower plastic limit). Soil shall not be unnecessarily compacted by trampling or trafficking by site machinery or handled when frozen or during and after heavy rainfall.

- Timing**
- Deciduous trees and shrubs: Late October to late March. Field-grown trees and shrubs planted out of season to be spring-ringed at nursery.
  - Conifers and evergreens: September/ October or April/ May.
  - Herbaceous plants: September/ October or March/ April.
  - Container grown plants: At any time if ground and weather conditions are favourable. Provide watering and weed control as necessary.
- Standard**
- All planting to be carried out in accordance with BS 4428 and during suitable weather conditions. Do not use mechanical tools within 100 mm of tree and plant stems. Water as necessary to ensure establishment and continued thriving of planting.
- Plants to be materially undamaged, sturdy, healthy and vigorous specimen, of good shape and without elongated shoots, grown in a suitable environment and hardened off and free from pests, diseases, discoloration, weeds and physiological disorders. Plant standard to BS 3936 'Nursery stock'. Name, forms, dimensions, provenance and other criteria as scheduled and defined in the National Plant Specification. Plant handling shall be in accordance with HTA 'Handling and establishing landscape plants'.
- Turf**
- Turf to be healthy, vigorous grass sward, free from the visible effects of pests, weeds and disease to BS 3969 'Recommendations for Turf for general purposes'. Turf shall be laid in accordance with BS 4428 'Code of Practice for general landscape operations'.

**Groundcover**  
Geotextile fabric to all beds to be laid before planting. Cut flaps neatly for planting and refit closely around plant stems. Mulch with Melcourt Mini Pine Mulch, 60mm depth. Finished level of mulch to be 30 mm below adjacent grassed or paved areas.

**Hedges**  
Planting bed depth to be 450mm minimum. Geotextile fabric to all hedges beds to be laid before planting. Cut flaps neatly for planting and refit closely around plant stems. Mulch with Melcourt Mini Pine Mulch, 60mm depth. Finished level of mulch to be 30 mm below adjacent grassed or paved areas.

**Native hedge**  
All native hedge planting to be undertaken in accordance with BS 8545 'Trees from nursery to independence in the landscape. Recommendations'. Tree pits to be excavated in grass to be 450x450x450mm. Backfill with ameliorant (1 m<sup>3</sup> per 10 m<sup>3</sup> of topsoil) and fertilizer as specified.

All plants to be protected with Tubex, Shrubshelter and Treeshelter, 60cm high with single timber stakes. Ensure that protection methods do not impede natural movement of trees and shrubs or restrict growth. Tubex 500x500mm biodegradable hessian mulch mats to be installed to each pit with galvanised steel pegs.

**Climbers and ornamental shrubs**  
Planting bed depth to be 450mm minimum. Geotextile fabric to all hedges beds to be laid before planting. Cut flaps neatly for planting and refit closely around plant stems. Mulch with Melcourt Mini Pine Mulch, 60mm depth. Finished level of mulch to be 30 mm below adjacent grassed area. Shrubs to be grouped by 3 to form irregular 'natural' layout.

**Trees**  
All tree planting to be undertaken in accordance with BS 5837 'Trees in relation to design, demolition and construction. Recommendations' and BS 8545 'Trees from nursery to independence in the landscape. Recommendations'. For detail of tree pit including root barrier, guying system and aeration and irrigation pipe refer to LUC drawing 6377-LD-DET-610. Trees in hard landscape to be planted in load bearing growing medium as specified with tree grilles (Furnitubes - Portman steel). Semimature trees to be root prepared and transplanted to BS 4043 'Recommendations for transplanting root-balled trees'. All standard trees to be secured with 2 no. stake. Stakes to be 50mm diameter softwood, peeled chestnut, larch or oak, straight, free from projections and large or edge knots and with pointed lower end with nails to BS 1202. All multistem trees to be secured using Platypus rootball anchoring kits. Backfill with ameliorant (1 m<sup>3</sup> per 10 m<sup>3</sup> of topsoil) and fertilizer as specified. Mulch with Melcourt Mini Pine mulch. Finished level of mulch to be 70 mm below adjacent grassed or paved areas.

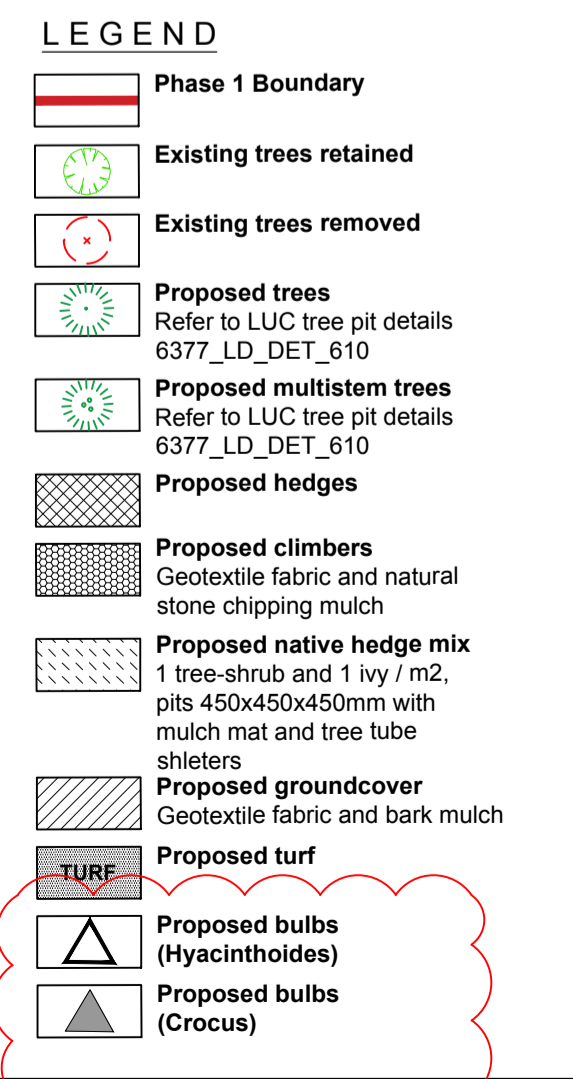
**MAINTENANCE**  
For general soft landscape maintenance - including native hedge, hedges, groundcover, climbers and lawn - refer to LUC Landscape Management Plan.

**Trees**  
Newly planted trees across the site will need to be watered regularly by hand during establishment i.e. for 3 years after planting. Soil around the base of trees in grass will be kept clear of weeds. Stakes/ties/ guys will be inspected and maintained in good order, adjusted and repaired where necessary to prevent rubbing of bark and removed when no longer required. Trees will be visually inspected on routine maintenance visits for damage and general safety and security issues. Damaged branches will be removed from both tree and ground promptly to minimise damage to the tree and danger/obstruction to users of the site.

For newly planted trees formative pruning work will be carried out as required and as appropriate for the species to remove branches overhanging or obstructing access and to maintain the form and health of the tree. All pruning to be carried out by a Member of the Arboricultural Association and in accordance with BS 7370 'Grounds maintenance. Recommendations for maintenance of soft landscape'.



Native hedge tree shelters and weed mat



Date	Issue/Notes	By	For
07.02.17	Planning	ML	JB EP
02.02.17	Planning	ML	JB EP
09.12.16	Planning	ML	JB EP
08.08.16	Update to planting schedule	ML	JB EP
21.07.16	Update to planting schedule	AS	JB EP
14.07.16	Update to notes	JB	JB EP
05.07.16	Pergola amended, ornamental shrub planting added	AS	JB EP
15.06.16	First issue	AS	JB EP
15.06.16	Issue Notes	DM	Chk Adv

**LUC** 43 Chilton Street  
London, NW11 1JD  
T: 020 7383 5784  
F: 020 7383 4798  
london@landuse.co.uk  
www.landuse.co.uk

Project  
**Richmond Upon Thames College**  
Phase 1

Client  
**Atkins**

Title  
**Soft Landscape**

Scale  
**1:250 @ A1**

Status  
**for Planning**

Job No.  
**6377**

Drawing No.  
**LD PLN 401**

Issue  
**H**

Do not scale from this drawing.  
© Drawing & Design Copyright of LUC