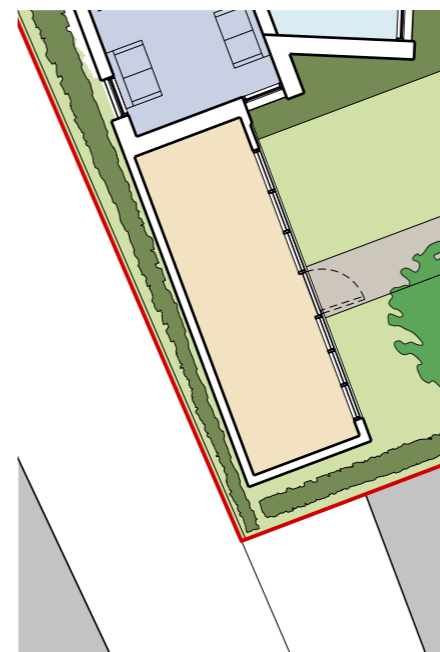
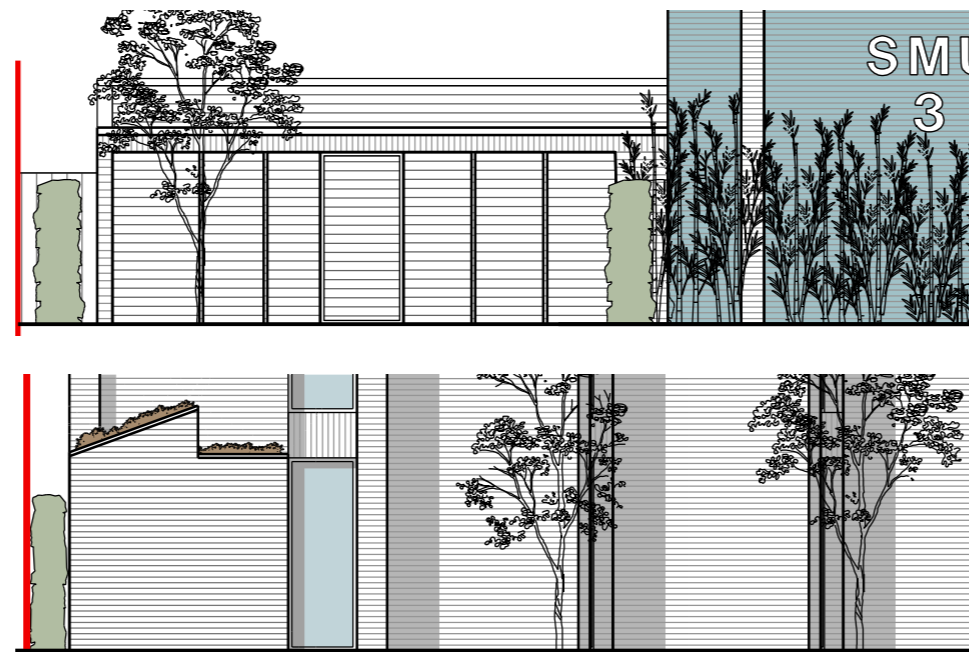
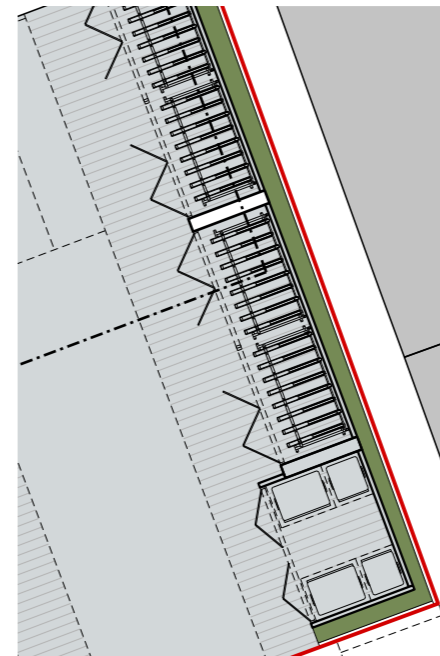


THE PROPOSAL

ANCILLARY ELEMENTS

The cycle and bin stores are designed as small buildings set within the landscaped gardens. The use of timber cladding and green roofs reinforces this and softens their appearance while using sustainable materials.

The plant room is a single storey volume connected to the main building to provide a sense of enclosure to the landscape gardens. The materials are similar to



THE PROPOSAL ACCESSIBILITY



- Card door reader and controller enables access to building entrance, specific unit, and student bedroom.
- Shared space aims to minimise the segregation between pedestrians, cycles and vehicles for a more flexible use of the site.
- Provision of 32 cycle spaces (5+ more than London Plan).
- Levelled entrance way.
- 3 parking spaces are provided (including one for disabled) with 1.8m footpath leading to the entrance of the building.
- Bin store situated close to site access for quick exchange (each unit has a refuse and recycling bin).
- CCTV will give surveillance to the areas of site entrance.
- Level threshold to entrance.

