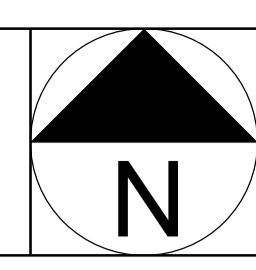




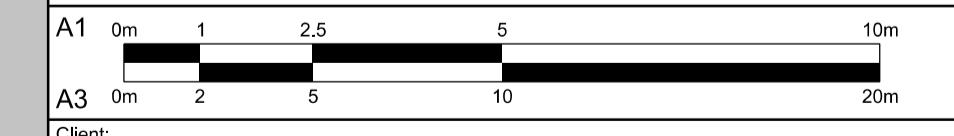
**General Notes:**  
 Do not scale from this drawing. Use marked dimensions. Should any discrepancies be noted, please inform this office. This drawing is copyright of Matthew Alchurch Architects Limited



- KEY**
- Boundary line
  - Existing Buildings
  - Shared space
  - Path
  - Trees
  - Pedestrian path
  - Grass
  - Hedge
  - Cycle Store
  - Refuse Store
  - Brown roof (accessed for maintenance only)
  - PV Panels

0 Issued for Planning 15/03/17 CS GS  
 Rev: Description: Date Dwn by: Ckd by:

**MAA Architects**  
 the boathouse design studio  
 27 ferry road teddington tw11 9nn  
 t: 020 8973 0050  
 e: info@maa-architects.com  
 w: www.maa-architects.com



Client: **Lockcorp Ltd**  
 Project Name: **Lockcorp House, 75 Norcutt Road, TW2 6SR**  
 Drawing Title: **Proposed: Roof Plan**

Project No: <b>JJ01</b>	Drawing No: <b>P_103</b>	Revision: <b>0</b>	Scale: <b>1:100 @ A1</b>	Date: <b>Feb 2017</b>
Drawn by: <b>CS</b>	Checked by: <b>GS</b>	Drawing Status: <b>Planning</b>		