



View north to Marble Hill House

### 3.1 SITE DEMOLITIONS AND REMOVALS

The demolition and removal strategy for Marble Hill Park aims to simplify the furniture and paving palette across the site, remove inappropriate and dilapidated structures in the context of the listed buildings, improve the setting of landscape features and increase access across the park.

#### Benches & Bins

A variety of bench types are currently present in the Park, in differing states of repair. The Park is also a site for English Heritage memorial benches, some of which are relatively new. A record will be made of all memorial benches to ensure these remain, or given the option to be replaced if necessary. The location of benches will be rationalised and given new paved plinths. Concrete plinths that are no longer required will be removed and reinstated as lawn.

Currently separate litter and dog-foul bins are provided at Marble Hill Park, many of which are in poor condition. In line with revised waste collection policy, these bins will be replaced with dual litter and recycling bins and located at strategic points near entrance/exits.

#### Fencing

The timber palisade fencing will be removed from the perimeter of the Woodland Quarters to improve access into the reinterpreted gardens. The fencing around the Black walnut will be removed and replaced with estate style fencing to improve its protection and setting.

#### Structures

The Chinese style shelter overlooking the west meadow is in poor state of repair and is not appropriate to the setting of Marble Hill House, so will be removed. The disused toilet block within the north-west Woodland Quarter will be removed to open up the area and improve the setting of the Ice House.

The two raised lawns in front of the Stable Block will be removed to improve the setting and open up views of the listed building.



Dilapidated benches



Litter bins



Palisade fencing around Woodland Quarters



Chinese style shelter



Raised lawns in front of Stable Block

#### KEY:

1. Removal of bench and/or associated concrete plinth
2. Remove timber palisade fencing
3. Demolition of former toilet block in Woodland Quarter
4. Removal of clipped hedge and fence around Grotto
5. Demolition of Chinese style shelter
6. Removal of bench and/or associated concrete plinth
7. Removal of speed restriction hump
8. Demolition of raised lawns
9. Demolition of timber storage shed
10. Removal of hard standing patches
11. Demolition of east section of brick wall
12. Relocation of 3no. cycle stands
13. Removal of picket fence around cafe terrace
14. Removal of speed restriction humps



Sitewide Demolition Plan - Ref. 581\_PL\_L\_11



## 3.2 SITE CONSTRUCTION MANAGEMENT

Site access will be from the north, from Richmond Road at White Lodge, along the western drive. This gate will be closed to park users throughout construction to avoid conflict between pedestrians, visitor cars and site traffic. Timed deliveries and banksmen will be required to ensure flow of site traffic is maintained and the site access is safe and secured. Consideration will be given to the size of delivery vehicles that can safely enter through the Richmond Road gate. A vehicle holding area will be designated inside the entrance gate so that vehicles are not held on Richmond Road and traffic flow is maintained. This will also be the wheel washing area for site traffic before exiting onto Richmond Road. The suspension of pavements, roadspace and bus stops will not be required. A designated parking area for construction workers will be provided within the secure site hoarding line, to the north of Marble Hill House. This will ensure visitor parking and surrounding roads will not be affected. Protective track matting will be placed on the lawn for parking, keeping the roads clear for site traffic. The lawn will be reinstated as part of the contractor's making good works of the site compound. The Stable Block and cafe works will have a dedicated storage area to the east of the Stables. The storage area for Main House and landscape works will be located east of the House in the north-east woodland quarter. Material storage will be outside of tree root protection areas and access routes which pass over RPA will be adequately protected in accordance with BS 5837:2012. Any skips required by the contractor will also be located in these storage areas. A solid 2m high hoarding will enclose two main work sites, including laydown and site welfare facilities; one at the Stable Block and the second around Marble Hill House, including the two northern woodland quarters. The boundary of the work site may change to accommodate site activities, particularly site services connections and renovations to the sports pitches. Heras fencing will be used to create safe enclosure on a short-term basis, or where a solid hoarding would be inappropriate.

A public information board will be located on the solid hoarding, adjacent to the north-south footpath. This will include details of the project, contractor, programme of works and emergency contact information.

A phased construction programme will be developed with the chosen contractor. This will seek to maximise the area of usable park available to the public throughout construction and limit the impact of construction works on the enjoyment of the park.

The contractor will need to ensure they adhere to BS5288:2009 in relation to emission of noise, vibration, dust and working hours.



Sitewide Construction Management Plan - Ref. 581\_PL\_L\_23



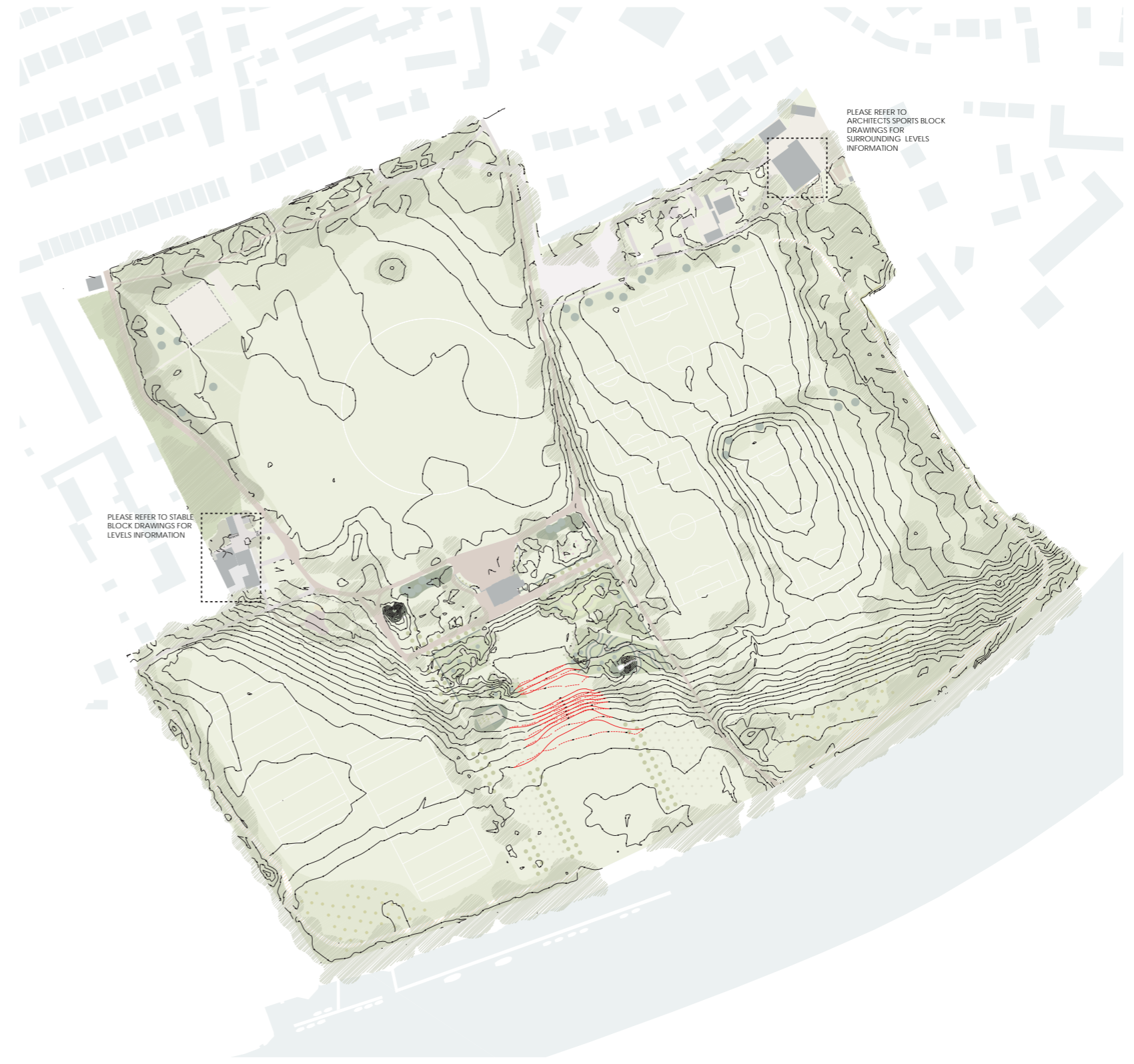
### 3.3 SITE DRAINAGE & LEVELS

The site wide landscape proposals seek to improve the infiltration of surface water across the park.

The following measures have been used to make these improvements:

- New path networks constructed from permeable paving materials
- New areas of non-permeable hard standing drain into soft landscape
- Pitch surface water infiltration improved by sand slitting (see Chapter 2.9)

The plan opposite shows the proposed re-levelling within the Pleasure Grounds. The contour changes are shown in red. This allows the sharpening of the terraces, as part of the 1752 plan reinterpretation and provides a net contribution to the floodplain storage capacity.



Sitewide Contour Plan - Ref. 581\_PL\_L\_21



### 3.4 HARD LANDSCAPE AND FURNITURE STRATEGY

The majority of the existing paths will be repaired to match the existing black asphalt surfacing to remove trip hazards or obstacles to accessibility. The 'wiggly paths' within the Pleasure Grounds, including the Ninepin Alley will be of an inert porous self binding gravel. All new paths will be constructed in line with the methodologies described in the Arboricultural Development Statement where required.

In the vicinity of the house the surrounding paths, including the carriage circle, will receive a tar and chip coating to improve the setting of the house. The circular lawn to the front of the House will be removed and paved over with tar and chip to reinstate the historic setting of the House.

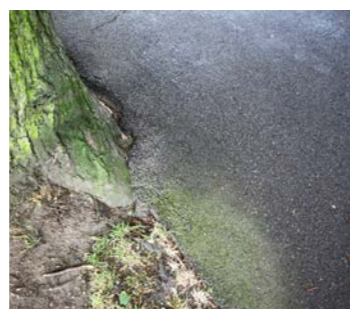
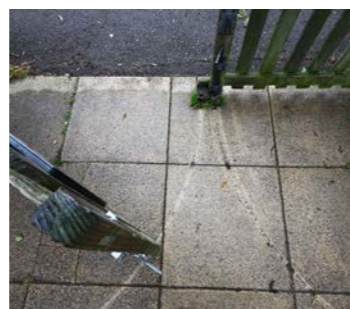
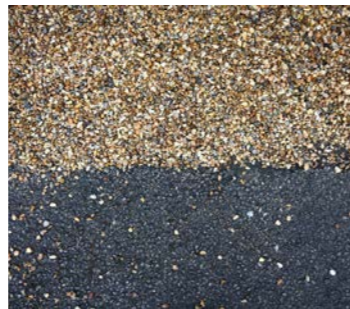
The strategy for furniture in Marble Hill Park has a two tier hierarchy. The general principles of the strategy apply to each tier:

- Creation of a simple and uniform palette
- Minimise clutter
- Highly functional and robust
- A coordinating colour for all metalwork
- Integration with wayfinding and interpretation

Tier one includes the Pleasure Grounds. In these areas the focus is on fixtures and fittings that are sensitive to the heritage setting and are part of the reinterpretation of the historic landscape.

Tier two is the remainder of the wider park. In these areas a standard park bench and bin will be used. Any furniture that does not meet these standards will be removed and replaced.

Opportunities for informal seating throughout the park will also be encouraged where this can be integrated with other elements of the park design such as dwarf walls, natural play elements and the lawns.



Existing surfaces within Marble Hill Park

- Key:
- Bench
  - Play area seating
  - Bin/ including dog waste
  - ▲ Interpretation elements
  - Interpretative bench



Diagram of proposed furniture and interpretative elements within Marble Hill Park - Ref. 581\_PL\_L\_04



### 3.5 LANDSCAPE INTERPRETATION STRATEGY

The story of Marble Hill and Henrietta Howard will be interpreted in a unified scheme across both landscape and the interior of the house, using multiple methods to appeal to the widest variety of users.

Interpretation in the landscape will include:

#### Maps of the park

At each of the four main entrances, there will be a large map, to orient visitors, with additional interpretation on a key area of historical or biodiversity interest. One map will also include an updatable noticeboard for community notices.

#### Illustrated Frames

To recreate scenes from Henrietta's day, frames will be positioned in key locations, showing 'look through' illustrations of how the gardens were used in the eighteenth century, and caption information explaining the scene. The frames will be of a height that works for families and wheelchair users and will be carefully placed so as not to interrupt key historic vistas.

#### Feature Interpretation

Illustrated panels will interpret other important areas: the grotto, the icehouse, the black walnut tree and associated biodiversity stories and the market garden.

#### Embedded Interpretation

Playful quotes from Henrietta and her contemporaries will be embedded in surprising places, including within the grotto and 'play incidents' such as the beehive and icehouse seat and even the nine pin bowls themselves

#### Hand Cart

We will create a family friendly mobile hand cart, which will be manned by volunteers. It will tell the stories of the gardeners at Marble Hill, and the games played there, and will store the nine pins and other Georgian era games which will be available for all visitors to enjoy.

#### Sports Block

There will be a community noticeboard inside the Sports Block, which will also include information about the history of sport at Marble Hill, featuring memories from park users today gathered as part of our Contemporary Resonance Projects

#### Trail

A take around resource will be created for families to engage them in activities across both landscape and house. It will be developed in close consultation with our user groups.

NOTE: Full Interpretation Scheme Design Report can be found at Appendix 8.5

- INTERPRETATION:
- ▲ Orientation Panel
  - Interpretation Frame
  - Feature Panel
  - Embedded Interpretation
- WAYFINDING:
- ◆ Directional Fingerpost
  - Statutory Signage



Diagram of proposed interpretative and wayfinding signage elements within Marble Hill Park



### 3.6 TREE MANAGEMENT AND WOODLAND QUARTER MANAGEMENT STRATEGY

Across the majority of the park trees define circulation routes and reinforce the historic parkland boundary structure. The approach promoted in these areas is to maintain all trees as healthy and safe specimens within the context of other design and park uses.

A priority is to protect and prolong the longevity of trees of heritage significance. The longer term strategy is to provide for tree succession through new planting and review of tree species to move towards a treescape that is diverse, references the 18th century landscape design and acknowledges that changes to the climate and issues of biosecurity will influence species selection.

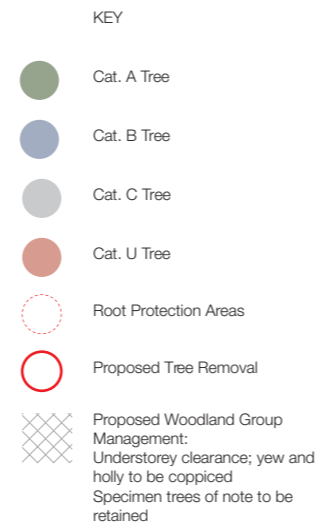
The trees in the Woodland Quarters are a significant landscape feature of the park. However they suffer from a lack of proactive management and successional planting to maintain healthy diverse habitats of varied ages. These trees require a different management approach to the other parts of the park in the context of the lost 18th century landscape design and intended reinterpretation of this plan.

There are several key considerations:

- Recreate the verdant enclosure, evergreen screening and hedging to the Woodland Quarters .
- Removal of self seeded species not appropriate to the original design.
- Pro-actively manage species that would have been understorey plantings notably yew and holly through selective thinning and coppicing.
- Use tree planting to frame views to and from Marble Hill House.
- Develop and commence a successional management and planting strategy for the avenues.
- Reinststate the stepped avenues.
- Diversify the tree species planting with reference to the research undertaken by Mark Laird.
- Propagation from existing heritage trees.
- Plant ground level habitats that complement the tree species in that location consistent to the original design intent .

Proposed tree planting includes (350no. new trees and 88no. Palisade trees):

- 148no. Semi-mature trees proposed in the Pleasure Grounds, including Avenues and additional tree planting to the Woodland Quarters.
- 166no. grove trees (4-5m containerised) in Pleasure Grounds.
- 88no. palisade trees.
- 12no. orchard trees (2-3m containerised) in Pleasure Grounds.
- 5no. Semi mature trees along Sweet Walk.
- 15no. Semi-mature trees to East Meadow.



Analysis of tree stock in the Pleasure Grounds based on the Tree Survey Report, November 2016, Ref CBA 10677 V1 - 581\_PL\_L10

