

3.7 PLANTING STRATEGY

Please refer to Chapter 4 for details of the overall vision for the landscape.

The following pages illustrate the proposed planting typologies within Marble Hill Park. These typologies combine to create a planting composition that; pairs nature conservation with the conservation of cultural heritage, reinterprets heritage planting features such as the Flower Garden, Grove, Thicket, Orchard, Wilderness, Avenues and Sweet Walk; enhances biodiversity, improves wildlife habitats, diversifies plant species through specific selection for the character areas within which they are located, and introduces alternative maintenance regimes to promote seasonal variation and new planting mixes for changing environmental conditions such as warmer temperatures and drought conditions, which will reinvigorate existing plant mixes in a complementary manner.

Planting design is a key component of the park activity plan and engagement process. The detailed planting plans will be subsequently developed in consultation with the park users as part of the activity plan.

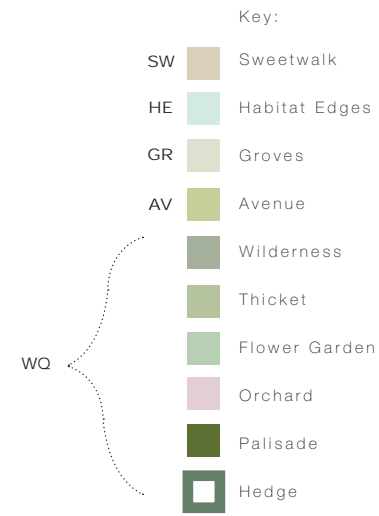


Diagram of proposed furniture and interpretative elements within Marble Hill Park



3.8 TREE PLANTING PALETTE

Site location key

av - Avenues

HE - Habitat edges

sw - Sweetwalk

wo - Woodland Quarters (Orchard, Palisade & Specimen trees)

GR - Groves



Alnus glutinosa HE
Alder WQ



Betula nigra HE
Black birch WQ



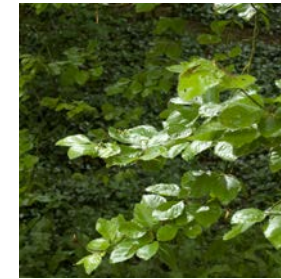
Betula pendula HE
Silver birch WQ



Carpinus betulus HE
Hornbeam WQ



Corylus avellana HE
Hazel WQ



Fagus sylvatica HE
Beech WQ



Maloideae WQ
Apple sub family



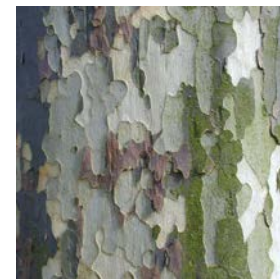
Malus spp WQ
Apple



Malus sylvestris WQ
Crab apple



Pinus sylvestris WQ
Scots pine
Evergreen



Platanus x hispanica WQ
London plane



Populus tremula SW
Aspen



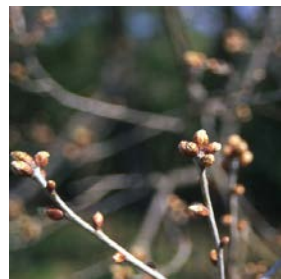
Prunus avium HE
Wild cherry WQ



Prunus padus HE
Bird cherry WQ



Quercus ilex WQ
Holm Oak
Evergreen



Quercus robur AV
English oak SW



Robinia pseudoacacia SW
False acacia



Salix pentandra SW
Bay willow



Sorbus aria HE
Whitebeam WQ



Sorbus aucuparia HE
Mountain ash WQ



Sorbus intermedia HE
Swedish whitebeam WQ



Taxus baccata SW
Yew WQ
Evergreen



Tilia x europaea AV
Common lime SW
WQ



Tilia cordata GR
Small leafed lime WQ



Ulmus lutece AV
Elm SW

3.9 PLEASURE GROUNDS - WILDERNESS, THICKET & HEDGES

SMALL TREES & SHRUBS



Buxus sempervirens
Box



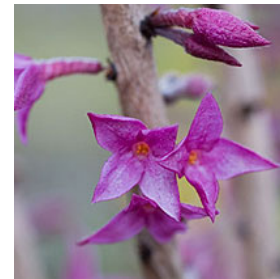
Calycanthus floridus
Carolina allspice



Crataegus monogyna
Hawthorn



Cytisus x spachianus
Sweet broom



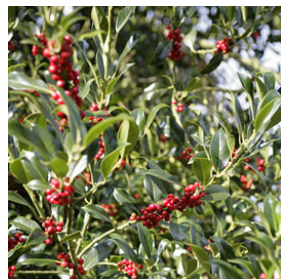
Daphne mezereum
February daphne



Elaeagnus ebbingei
Silverberry



Euonymus japonicus
Spindle



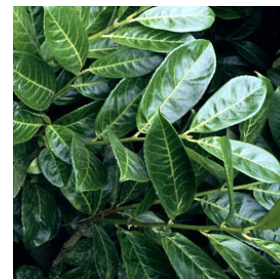
Ilex aquifolium
Common holly



Ligustrum lucidum
Chinese privet



Myrtus communis
Myrtle



Prunus laurocerasus
Laurel



Prunus lusitana
Portuguese laurel



Ruscus aculeatus
Butcher's broom



Taxus baccata
Yew
Evergreen

- Key:
- Wilderness
 - Thicket
 - Flower Garden
 - Orchard
 - Palisade
 - Hedge

GROUNDCOVER & PERENNIALS



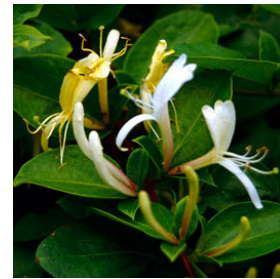
Dryopteris filix-mas
Male fern



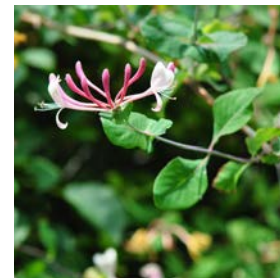
Geranium sanguineum
Geranium



Hedera helix
Ivy
Evergreen



Lonicera japonica Halliana
Honeysuckle



Lonicera periclymenum
Honeysuckle

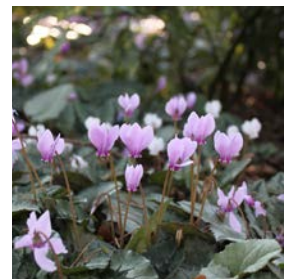


Primula veris
Cowslip

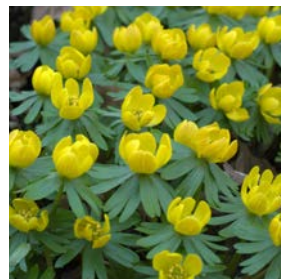
BULBS



Arum italicum
Italian Lords and Ladies



Cyclamen spp.



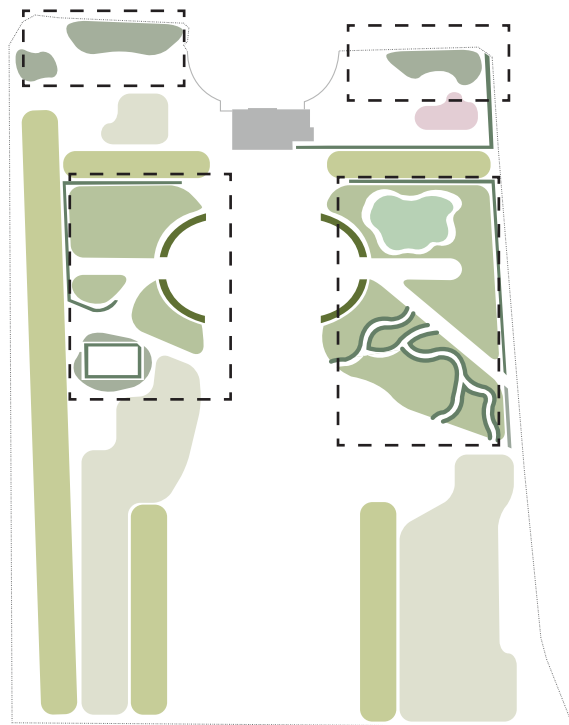
Eranthis hyemalis
Winter aconite



Hyacinthoides non-scripta
Bluebells



Narcissus pseudonarcissus
Daffodil



3.10 PLEASURE GROUNDS - FLOWER GARDEN

SMALL TREES & SHRUBS



Rosa rubiginosa
Sweet briar



Viburnum opulus
Guelder rose

GROUNDCOVER & PERENNIALS



Antirrhinum majus
Snapdragon



Dianthus caryophyllus
Carnation



Dictamnus albus
Dittany



Erysimum cheiri
Wallflower



Polemonium caeruleum
Jacobs ladder



Pulmonaria officinalis
Lungwort



Saxifraga spp
Saxifrage



Silene viscaria
Clammy campion



Valeriana officinalis
Valerian



Viola spp
Violets



Vinca spp



Centaurea moschata
Sultan flower



Impatiens balsamina
Impatiens

BULBS



Asphodelus albus
White asphodel



Crocus vernus



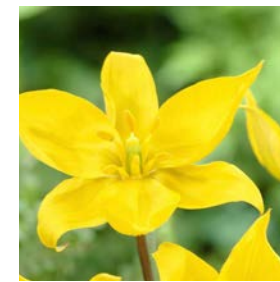
Erythronium spp



Muscari armeniacum
Grape hyacinth



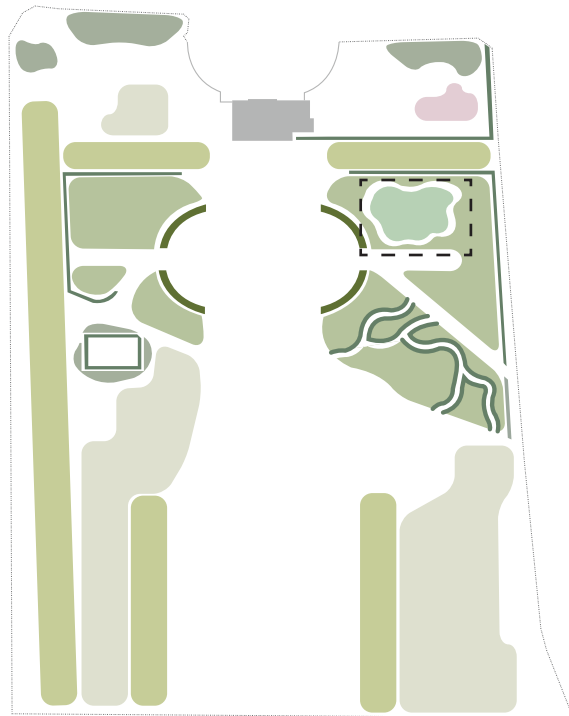
Ornithogalum umbellatum
The Garden star of Bethlehem



Tulipa sylvestris
Wild tulip

ANNUALS

- Key:
- Wilderness
 - Thicket
 - Flower Garden
 - Orchard
 - Palisade
 - Hedge

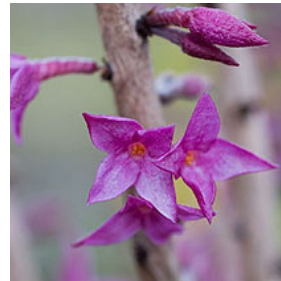


3.11 WIDER PARK - SWEET WALK

SMALL TREES & SHRUBS



Crataegus monogyna
Hawthorn



Daphne mezereum
February daphne



Hypericum androsaemum
Balm of the warriors wounds



Ilex aquifolium
Common holly



Laburnum x watereri
Laburnum



Jasminum angulare
Jasmine



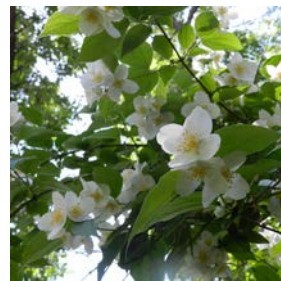
Juniperus communis
Juniper



Myrtus communis
Myrtle



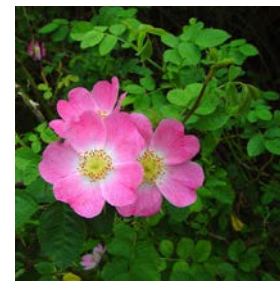
Osmanthus fragans
Sweet olive



Philadelphus 'Belle étoile'
Mock orange



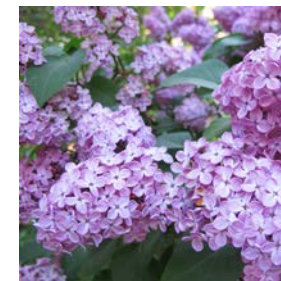
Prunus spinosa
Blackthorn



Rosa rubiginosa
Sweet briar



Rubus odoratus
Purple flowering raspberry



Syringa vulgaris
Lilac



Viburnum tinus
Laurustinus

GROUNDCOVER
& PERENNIALS



Dianthus plumarius
Pink



Malva moschata
Musk mallow



Primula vulgaris
Common Primrose



Vinca major
Greater periwinkle



Convallaria majalis
Lily of the Valley



Galanthus nivalis
Snowdrop



Muscari armeniacum
Grape Hyacinth

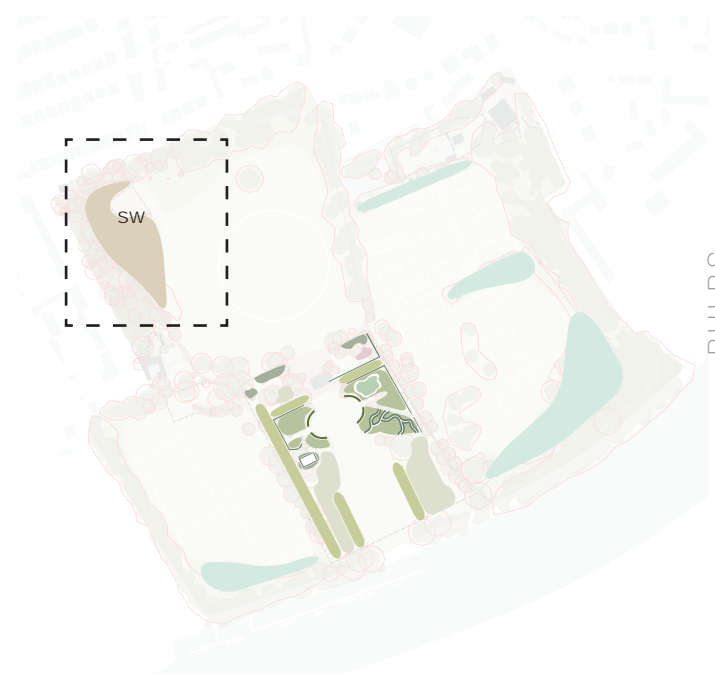


Narcissus pseudonarcissus
Daffodil (UK native)



Tulipa clusiana
Lady tulip

BULBS



3.12 WIDER PARK - HABITAT EDGES



Achillea millefolium - Yarrow
Flowering period:
summer



Agrimonia eupatoria - Agrimony
Flowering period:
summer / autumn



Campanula rotundifolia - Harebell
Flowering period:
spring / summer / autumn



Centaurea nigra - Lesser Knapweed
Flowering period:
summer / autumn



Galium verum - Lady's bedstraw
Flowering period:
summer



Geranium pratense - Meadow Cranesbill
Flowering period:
summer



Hypochaeris radicata - Common Catsear
Flowering period:
summer / autumn



Lathyrus pratensis - Meadow Vetchling
Flowering period:
spring / summer



Leontodon hispidus - Rough Hawkbit
Flowering period:
summer / autumn



Linaria vulgaris - Yellow Toadflax
Flowering period:
summer / autumn



Lotus corniculatus - Bird's Foot Trefoil
Flowering period:
summer / autumn



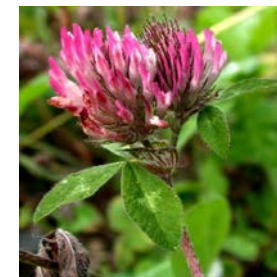
Plantago lanceolata - Ribwort Plantain
Flowering period:
spring / summer



Sanguisorba officinalis - Great Burnet
Flowering period:
summer



Scabiosa columbaria - Small scabious
Flowering period:
summer / autumn



Trifolium pratense - Red clover
Flowering period:
summer / autumn

