

8.37 MARBLE HILL HOUSE - LIGHTING APPLICATION



MARBLE HILL HOUSE

Lighting Application for Listed Building Consent

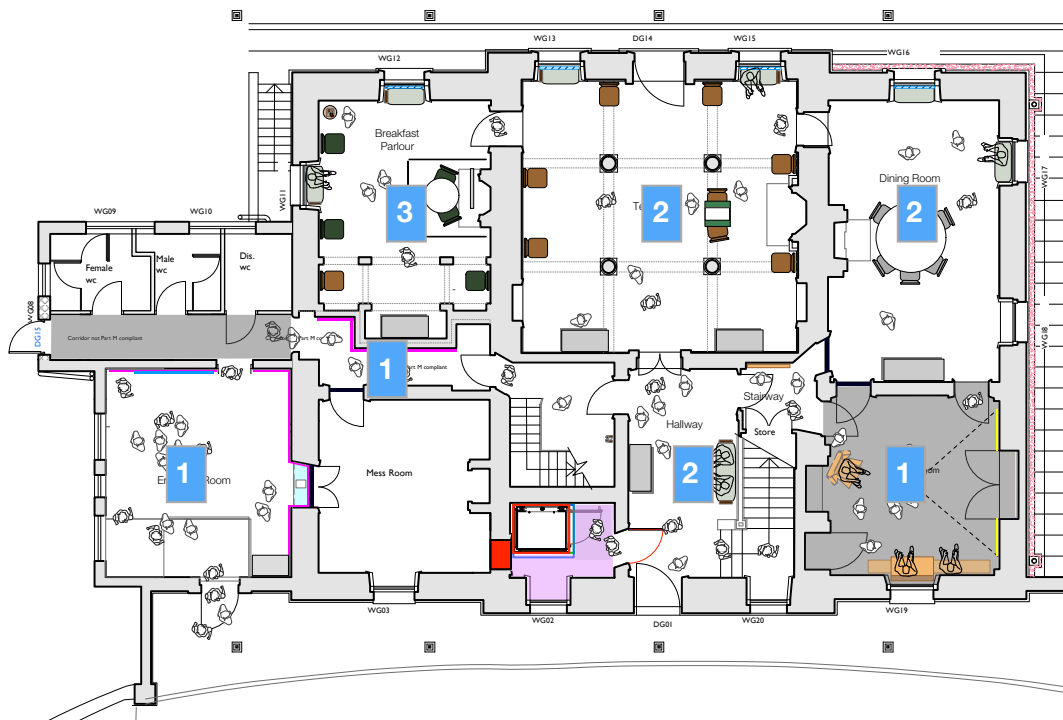
Prepared for English Heritage
and Skellon Studio
Prepared by DHA Designs

January 2017

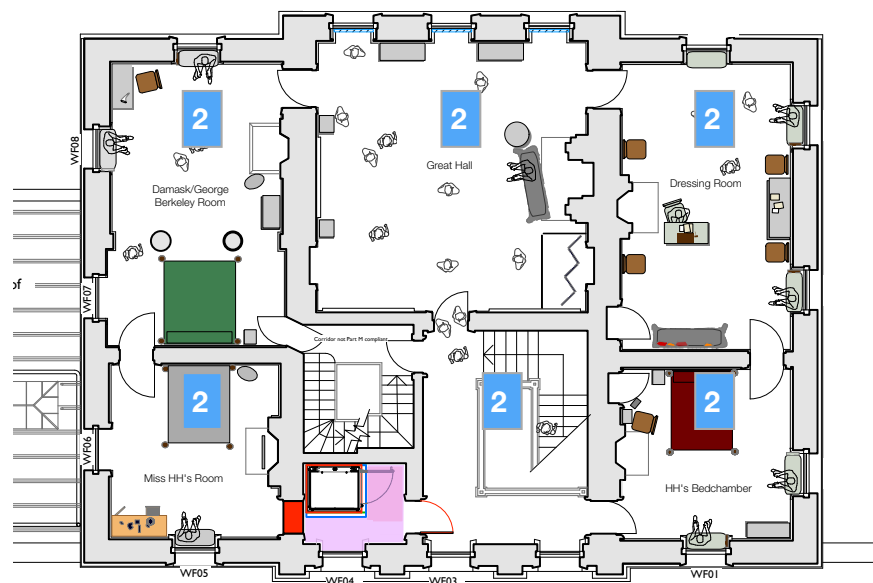
The re-design of the lighting for Marble Hill House is a sympathetic lighting scheme in conjunction with the English Heritage briefing. The bulk of the lighting is low level decoratives, re-using ones that EH have in the space, and having others custom-made to suit.

The lighting philosophy has three different types of intervention and is as follows:

- 1 Areas that require modification to the lighting for both lighting and cabling and are included in the next few pages of this report
- 2 Areas where there is no proposed modification to the high level lighting, and the only intervention might be moving some low level decoratives, which doesn't affect the permanent cabling or sockets
- 3 Area where we are proposing moving a larger pendant from elsewhere in the house to be installed to existing ceiling rose here



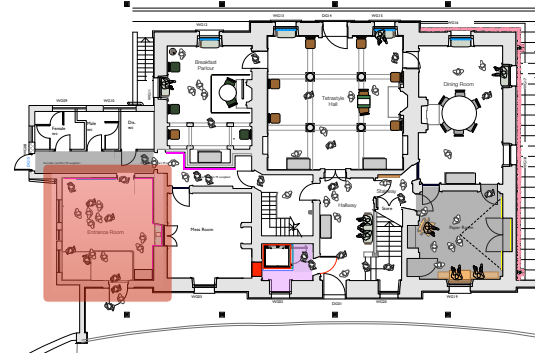
ground floor



first floor

TYPE 1

This area is to become the new visitor entrance for the house and the dated low voltage track and spot scheme does not work with the re-design of the space and is not energy efficient. We are proposing a new LED scheme that re-uses existing cabling where possible



Ceiling height is very low so suspending track is not the best solution but the cabling is in a useful location and can be reused



Existing fittings are very large and obtrusive, and the plan is to replace them in same location with smaller bulkhead that can be used for emergency lighting.



Lighting required to be added to niche for display, new cabling required as no power there at the moment

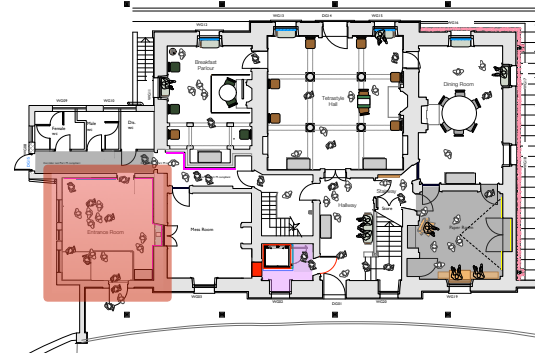


Hanging fittings are very glary, and quality of the current installation is not sufficient quality for this area

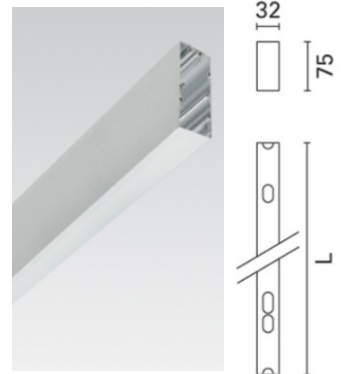
TYPE 1

Proposed scheme has three components:

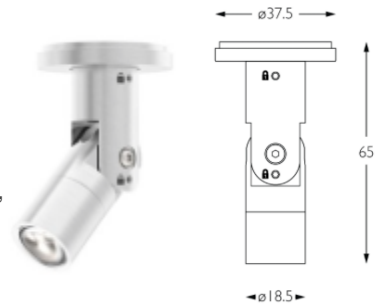
- linear LED treatment to wash perimeter walls (which have new graphics) replacing track
- Replacing emergency entrance lights with similar, smaller LED versions rather than fluorescent
- New lighting to recess which becomes a display case



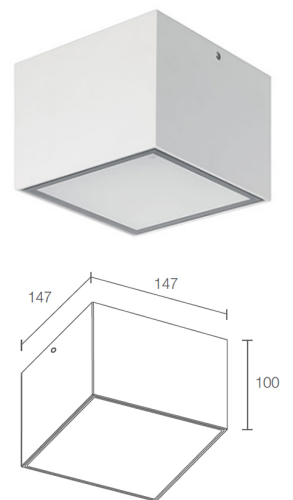
Linear LED solution to be suspended with small suspension wires close to following existing line of track, but closer to wall
Reference: iN30 pendant
iGuzzini Lighting
T: 01483 468000



Miniature small spotlights to be located in niche and for lighting to objects.
Reference: Surf S fitting,
Mike Stoane Lighting
T: 0131 440 1313

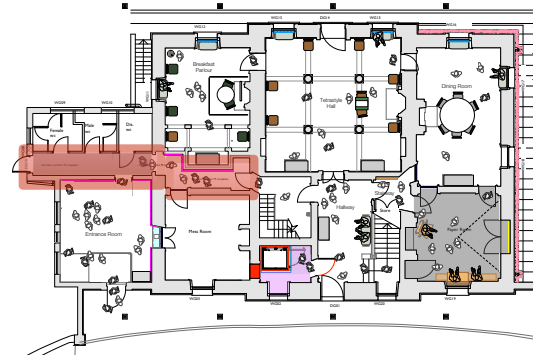


Surface mounted bulkhead to be fixed in same location as existing fittings, no new wiring required. Pendant not suitable due to doorway so neutral surface fitting preferred. Note depth required to accommodate potential emergency control gear.
Reference: Tak 1.0,
Luce & Light (Lightworks)
T: 01892 838311

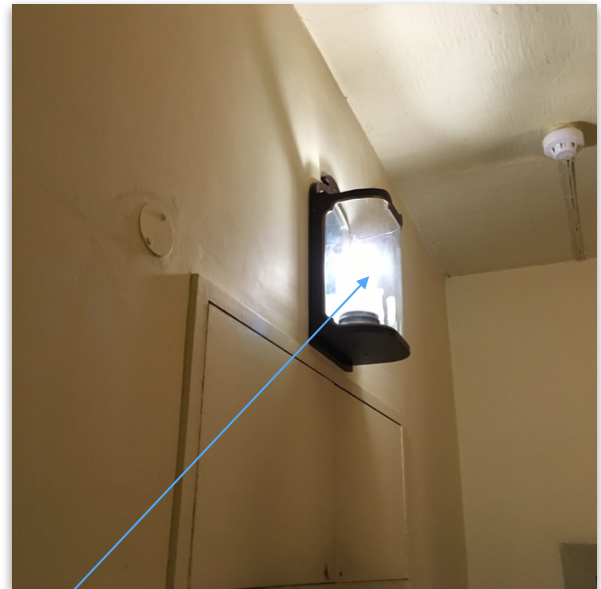


TYPE 1

The corridor is currently lit with a series of bulkheads that create even lighting treatment, but the fixtures are fluorescent and quite glary and should be updated with a more decorative equivalent - as this is one of the first spaces visited; this is also providing access to the toilets and exit so the lighting needs to be even and safe.



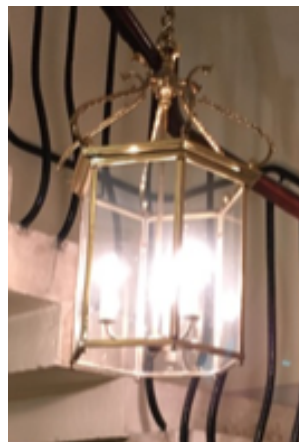
Fittings require no extra cabling and we are proposing replacing in same locations, using more decorative fittings to English Heritage spec



Fixture has cold white light and we plan to replace the lamp with a warmer source in keeping with nearby light sources



English Heritage images of fixtures from stock or made to suit (spec by EH)



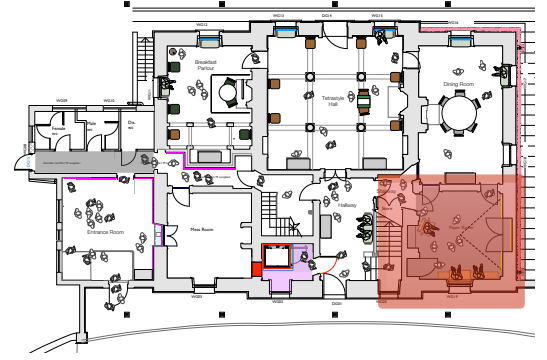
Existing fitting in stairwell of Marble Hill House that might be copied for corridor lighting



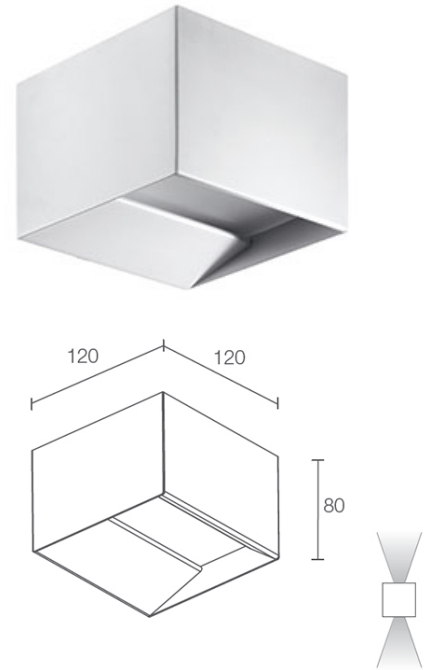
New LED candle lamps to be standardised throughout house in these wall lights, but also in pendants and candelabras

TYPE 1

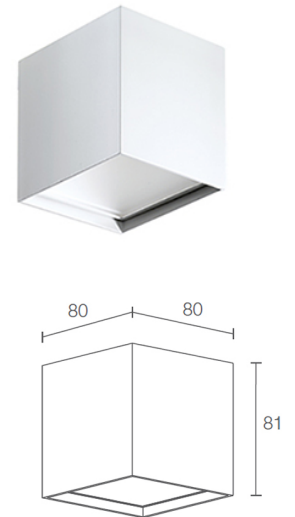
The Paper Room needs quite a bit of reparatory work, but the cabling is already in the wall and no other lighting is required due to the AV projection requiring a lower light level. The under stairs area is to be opened up to public access and needs even, soft lighting to allow safe passage to Paper Room.



Existing fitting to be removed and replaced with new LED fitting in same position. Fitting is unsuitable as wall requires reparatory work. Fitting chosen has downlight component to wall to light panels below, and uplight component to light vaulted ceiling above (and reflect light into space). Fitting from same range of fixtures used elsewhere.
Reference: Versa 1.0
Luce & Light (Lightworks)
T: 01892 838311



Existing fitting to be replaced as this area is now public access. Small LED bulkhead (same family as used elsewhere) to replace existing bulkhead in same location, and part of emergency lighting strategy. Existing cabling to be retained.
Reference: Teka 5.0
Luce & Light (Lightworks)
T: 01892 838311



TYPE 2

The remainder of the rooms have no new cabling but use existing sockets and ceiling roses. The pendants (with the exception of type 3) are not being modified but will be revamped with standardised LED candle lamps. The same lamps will be used to re-lamp the candelabras which may be supplemented by English Heritage but will be plugged into existing sockets.



Fittings need re-lamping anyway as there are a number of failures and LED preferred to halogen for longevity and energy usage



Most rooms have existing 5A dedicated lighting sockets and any new candelabras will be specified with 5A plugs to suit



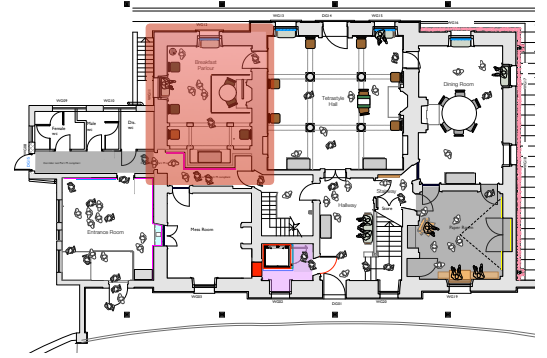
Most rooms have local switches which control pendants and the 5A sockets and can be operated by the excellent volunteer guides



Final specification of LED candle lamps will be done by English Heritage with DHA mocking up a selection in the actual fittings

TYPE 3

The Breakfast Parlour is the only room other than the Type 1 spaces where we are proposing a change of fixture. The current pendant is rather small for the area, but there is a much larger one used - strangely - in an upstairs bedroom which would be more useful and more appropriate in this higher-ceilinged space



Display in Breakfast Parlour uses the height of the walls and a large pendant would help brighten these.



Decorative mouldings would be lit by this pendant and would not require any additional cabling



This pendant is currently upstairs and would suit both spaces to move this to Breakfast Parlour



LED candle lamps will be specified for this pendant to match the specification used elsewhere



THANK YOU

DHA DESIGNS

Studio 4

6-8 Cole Street

London SE1 4YH

www.dhadesigns.com