

Do not scale from this drawing.
Check all dimensions on site before fabrication or setting out.
This document is protected by copyright and may not be reproduced without the permission of Hamiltons Architects Ltd.

Notes:

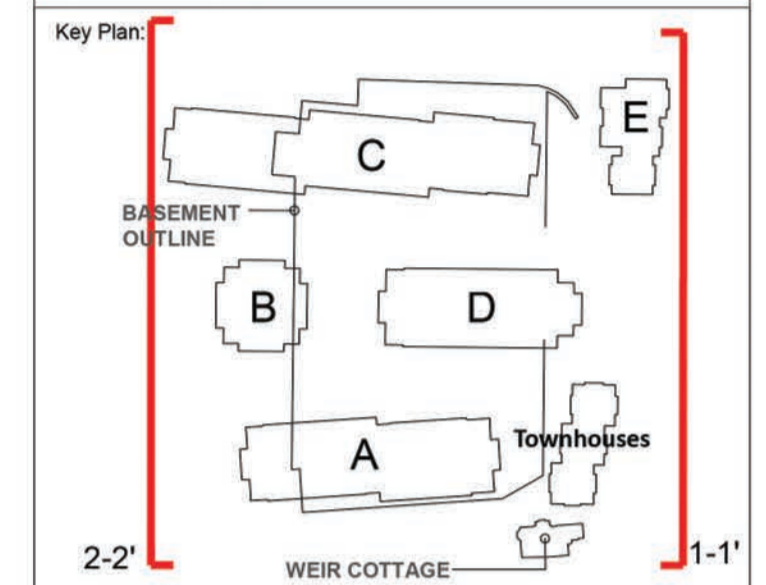
Rev.	Description:	Date:	Drawn by:	Issued by:
P01	Blocks D & E updated on elevations 1-1'	16-04-15	JL	TPH
P02	-Central Block B Split into two Blocks, associated landscape revisions. -Material 2 amended -Entrance revised on elevation 1-1' to provide an in and an out vehicular route	11-05-16	SD	TPH
P03	-Building names revised -Revised Section 73 Application	23-03-17	SD	TPH



Proposed Elevation 1-1'



Proposed Elevation 2-2'



- Material Legend**
- 1 Light clay facing brickwork.
 - 2 Dark clay facing brickwork.
 - 3 Double glazed reversible timber and RAL aluminium composite windows (triple glazed onto waterside) all to match SBD policy 27.
 - 4 Reconstituted stone coping/facing/fascia.
 - 5 RAL coloured preformed aluminium coping.
 - 6 RAL coloured solid aluminium brise soleil.
 - 7 Toughened glass balustrade.
 - 8 Tubular brushed stainless steel handrail.
 - 9 Black steel balcony balustrade with horizontal members to flat vertical balusters.
 - 10 Glass entrance doors with RAL finished surrounds and glazed side screens, all to match SBD policy 20.
 - 11 Composite cladding in RAL coloured aluminium finish with concealed fixings.
 - 12 Aluminium cladding in RAL coloured finish with concealed fixings.
 - 13 Clear or opaque glass panel depending on internal apartment configuration.
 - 14 Sedum Roof.



PLANNING

Project:
Teddington Riverside
Drawing Title:
Proposed elevation 1-1' Broom Road
Proposed elevation 2-2' Riverside

hamiltons architects

Scale 1:500 @A1	Drawn by: IG	Issued by: TPH	Date: 04-09-15
Project No: 14039	Drawing No: A-10-300	Rev: P03	