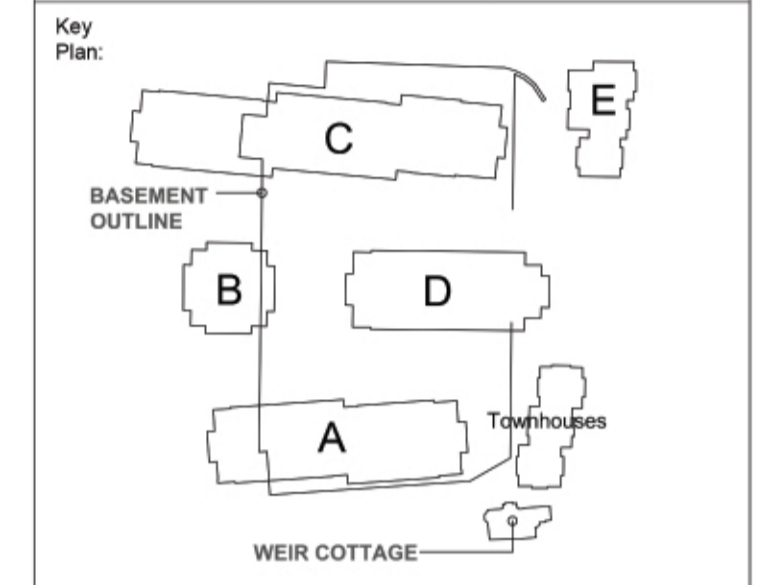


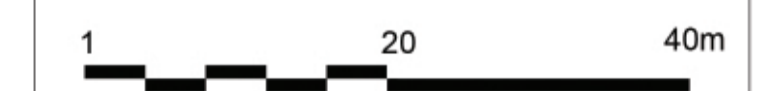
Do not scale from this drawing.
Check all dimensions on site before fabrication or setting out.
This document is protected by copyright and may not be reproduced without the permission of Hamiltons Architects Ltd.

Notes:

Rev.	Description:	Date:	Drawn by:	Issued by:
P01	Not issued			
P02	Blocks D & E updated on elevations 3-3 & 4-4, central door on block A elevations 3-3	15-04-16	JL	TPH
P03	Central Block B Split into two Blocks	11-05-16	SD	TPH
P04	Proposed elevation 3-3 East Block A & 4-4 West Block A -Building names revised	17-03-16	SD	TPH



- Material Legend**
- 1 Light clay facing brickwork.
 - 2 Dark clay facing brickwork.
 - 3 Double glazed reversible timber and RAL aluminium composite windows (triple glazed onto waterside) all to match SBD policy 27.
 - 4 Reconstituted stone coping/facing/fascia.
 - 5 RAL coloured preformed aluminium coping.
 - 6 RAL coloured solid aluminium brise soleil.
 - 7 Toughened glass balustrade.
 - 8 Tubular brushed stainless steel handrail.
 - 9 Black steel balcony balustrade with horizontal members to flat vertical balusters.
 - 10 Glass entrance doors with RAL finished surrounds and glazed side screens, all to match SBD policy 20.
 - 11 Composite cladding in RAL coloured aluminium finish with concealed fixings.
 - 12 Aluminium cladding in RAL coloured finish with concealed fixings.
 - 13 Clear or opaque glass panel depending on internal apartment configuration.
 - 14 Sedum Roof.



PLANNING

Project:
Teddington Riverside
Drawing Title:
Proposed Elevation 3-3' East Block A
Proposed Elevation 4-4' West' Block A

hamiltons architects

Scale 1:250 @A1	Drawn by: IG	Issued by: TPH	Date: 04-09-15
Project No: 14039	Drawing No: A-10-301	Rev: P04	



Proposed Elevation 3-3'



Proposed Elevation 4-4'