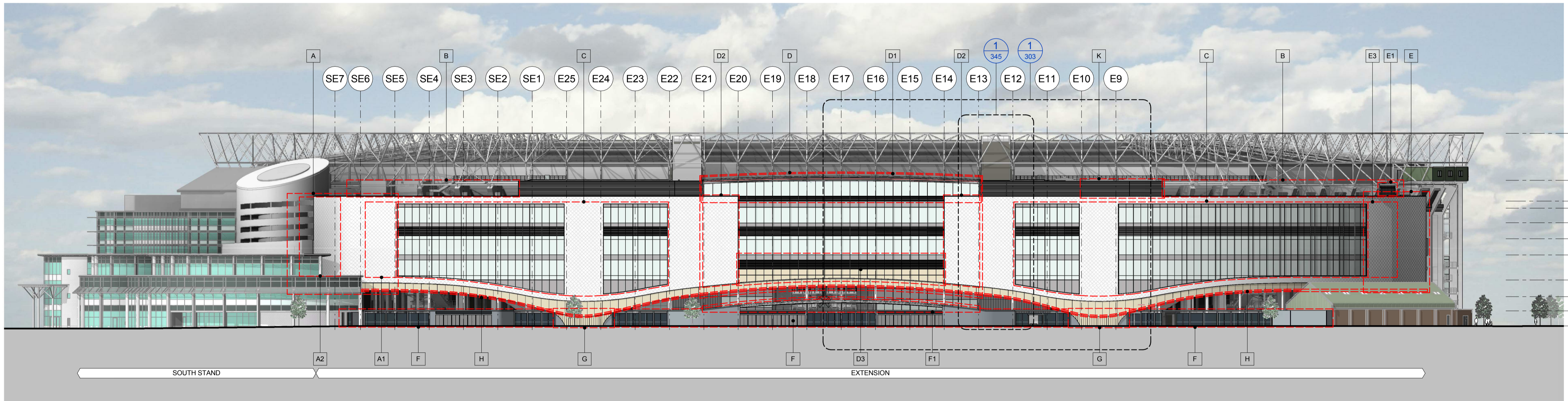


| Revisions |          |                               |       |
|-----------|----------|-------------------------------|-------|
| P01       | 28.06.16 | PLANNING ISSUE                | AE PY |
| P02       | 14.07.16 | REVISED PLANNING ISSUE        | KI PY |
| P03       | 09.03.17 | PLANNING AMENDMENT SUBMISSION | KI LP |

**Revision Notes**

**PLANNING AMENDMENTS**

- A GENERAL AMENDMENTS TO THE SOUTH END.
- A1 INCREASED SHINGLES CLADDING AREA AND CURTAIN WALL REDUCED ACCORDINGLY.
- A2 REDUCED MASSING AND REVISED INTERFACE WITH THE SOUTH STAND.
- B PPC LOUVRES LOCATED TO THE BOWL SIDE HAVE BEEN OMITTED.
- C CURTAIN WALL SETTING OUT REVISED GENERALLY. SILICONE JOINTS TO TRANSOMS AND MULLION REPLACED WITH CAPPED SYSTEM. LEVEL 04 PPC LOUVRES: SETTING OUT & HEIGHT REVISED. MONORAIL FOR ABSEILING REMOVED.
- D GENERAL AMENDMENTS TO THE CENTRAL ELEVATION CANOPY AT LEVEL 5A REVISED GENERALLY AND STANDING SEAM REPLACED WITH SINGLE PLY MEMBRANE. SUPPORT COLUMNS TO ROOF CANOPY REVISED. SQUARE FASCIA TO ROOF EDGE.
- D1 LEVEL 5A GLAZED SCREEN EXTENDED IN HEIGHT AND PPC LOUVRES INCLUDED AT LOW LEVEL.
- D2 INCREASED SHINGLES CLADDING AREA AND CURTAIN WALL AREA REDUCED ACCORDINGLY. FOUR VERTICAL FINIS REMOVED.
- D3 PORCELAIN PANELS WITH SLOTTED HOLES FOR VENTILATION REPLACED WITH PPC LOUVRES. EXPRESSED HORIZONTAL PATTERN TO PORCELAIN PANELS OMITTED.
- E GENERAL AMENDMENTS TO THE NORTH END PORCELAIN CLADDING REPLACED WITH PPC ALUMINIUM CLADDING.
- E1 GREEN WALL TO THE NORTH END EXTENDED AND PPC LOUVRES REMOVED.
- E2 INCREASED SHINGLES CLADDING AREA AND CURTAIN WALL REDUCED ACCORDINGLY.
- E3 FENCELINE, GATE AND PERIMETER COLUMNS SETTING OUT REVISED.
- F CANOPY TO TURNSTILES REVISED.
- F1 PORCELAIN PATTERN CHANGED FROM HORIZONTAL TO VERTICAL.
- G PORCELAIN PANELS TO THE SOFFIT OF THE ARCH REPLACED WITH PPC ALUMINIUM PANELS. PORCELAIN PANELS SETTING OUT REVISED.
- H ROOF TO LEVEL 5A (NORTH END) EXTENDED.
- K GLAZED SPANDREL PANELS REPLACED WITH METAL SPANDREL PANEL. PORCELAIN PANELS REPLACED WITH PPC ALUMINIUM CLADDING.
- L PPC LOUVRES INCLUDED FOR MECHANICAL VENTILATION.



- +48.570 m FFL 07
- +39.011 m FFL 06
- +34.775 m FFL 05A
- +33.345 m FFL 05
- +30.370 m FFL 04A
- +27.123 m FFL 04+
- +23.825 m FFL 04
- +18.725 m FFL 03
- +15.325 m FFL 02A
- +12.435 m FFL 02
- +9.372 m FFL 01

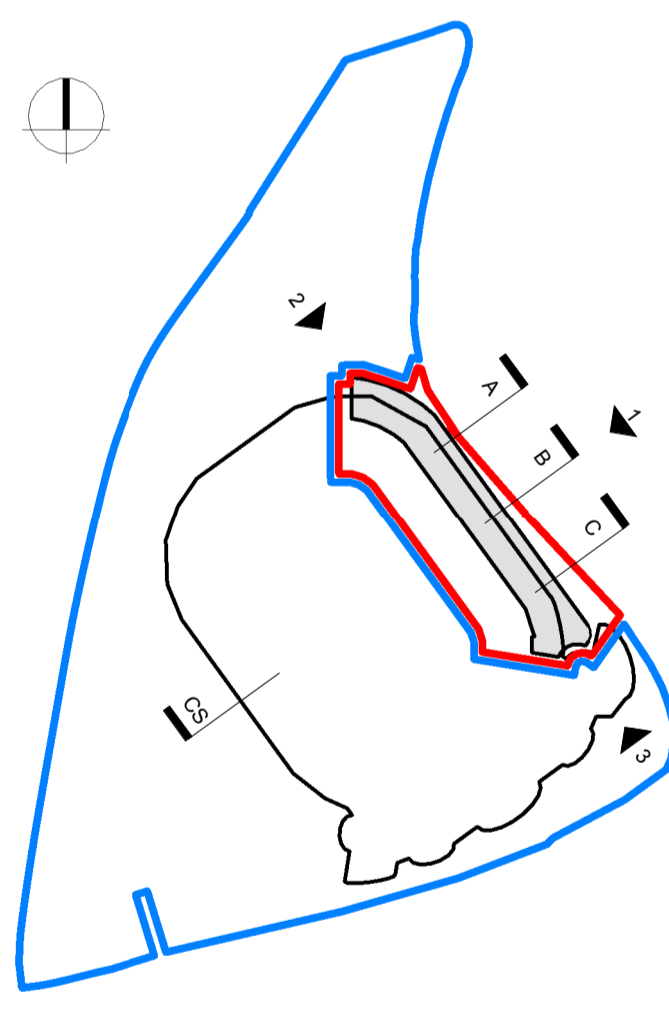
**NOTES**

To be read in conjunction with the following drawing series:  
 001, 010, 020, 030, 110, 120, 200, 800.

**KEY**

- Development Boundary
- Site Ownership Boundary
- Area out of scope (The areas marked grey are those parts of the stadium, at this level, where no physical works are proposed).

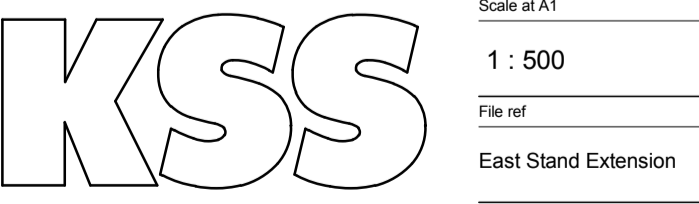
**KEY PLAN**



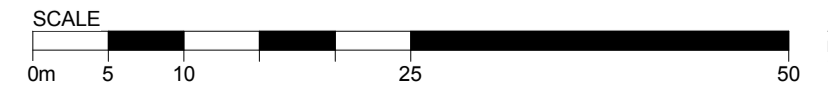
**1 ELEVATION**  
 EAST GA ELEVATION  
 1 : 500

**PLANNING**

Client  
 RFU  
 Project  
**TWICKENHAM STADIUM  
 EAST STAND EXTENSION**  
 Drawing title  
**GA ELEVATION 1**



Scale at A1  
**1 : 500**  
 File ref  
 East Stand Extension  
 Drawn by Date drawn  
 KI 09.03.17  
 Checked by Date checked  
 LP 09.03.17



| Doc ref    | Project number | Drawing number | Revision |
|------------|----------------|----------------|----------|
| 100-KSS-DR | 15735          | 300            | P03      |