

| Revisions |          |                                 |       |
|-----------|----------|---------------------------------|-------|
| P01       | 14.07.16 | ADDITIONAL PLANNING INFORMATION | KI PY |
| P02       | 09.03.17 | PLANNING AMENDMENT SUBMISSION   | KI LP |

**Revision Notes**

| PLANNING AMENDMENTS |   |
|---------------------|---|
| A                   | GENERAL AMENDMENTS TO THE SOUTH END.  |
| A1                  | INCREASED SHINGLES CLADDING AREA AND CURTAIN WALL REDUCED ACCORDINGLY.  |
| A2                  | REDUCED MASSING AND REVISED INTERFACE WITH THE SOUTH STAND.   |
| B                   | PPC LOUVRES LOCATED TO THE BOWL SIDE HAVE BEEN OMITTED.   |
| C                   | CURTAIN WALL SETTING OUT REVISED GENERALLY. SILICONE JOINTS TO TRANSOMS AND MULLION REPLACED WITH CAPPED SYSTEM LEVEL 04 PPC LOUVRES SETTING OUT & HEIGHT REVISED. MONORAIL FOR ABSEILING REMOVED.        |
| D                   | GENERAL AMENDMENTS TO THE CENTRAL ELEVATION CANOPY AT LEVEL 5A REVISED GENERALLY AND STANDING SEAM REPLACED WITH SINGLE PLY MEMBRANE. SUPPORT COLUMNS TO ROOF CANOPY REVISED. SQUARE FASCIA TO ROOF EDGE. |
| D1                  | LEVEL 5A GLAZED SCREEN EXTENDED IN HEIGHT AND PPC LOUVRES INCLUDED AT LOW LEVEL.  |
| D2                  | INCREASED SHINGLES CLADDING AREA AND CURTAIN WALL AREA REDUCED ACCORDINGLY. FOUR VERTICAL FIN REMOVED.  |
| D3                  | PORCELAIN PANELS WITH SLOTTED HOLES FOR VENTILATION REPLACED WITH PPC LOUVRES EXPRESSED HORIZONTAL PATTERN TO PORCELAIN PANELS OMITTED.   |
| E                   | GENERAL AMENDMENTS TO THE NORTH END   |
| E1                  | PORCELAIN CLADDING REPLACED WITH PPC ALUMINIUM CLADDING.  |
| E2                  | GREEN WALL TO THE NORTH END EXTENDED AND PPC LOUVRES REMOVED.   |
| E3                  | INCREASED SHINGLES CLADDING AREA AND CURTAIN WALL REDUCED ACCORDINGLY.  |
| F                   | FENCELINE, GATE AND PERIMETER COLUMNS SETTING OUT REVISED.  |
| F1                  | CANOPY TO TURNSTILES REVISED.   |
| G                   | PORCELAIN PATTERN CHANGED FROM HORIZONTAL TO VERTICAL.  |
| H                   | PORCELAIN PANELS TO THE SOFFIT OF THE ARCH REPLACED WITH PPC ALUMINIUM PANELS. PORCELAIN PANELS SETTING OUT REVISED.  |
| K                   | ROOF TO LEVEL 5A (NORTH END) EXTENDED.  |
| L                   | GLAZED SPANDREL PANELS REPLACED WITH METAL SPANDREL PANEL. PORCELAIN PANELS REPLACED WITH PPC ALUMINIUM CLADDING.   |
| L1                  | PPC LOUVRES INCLUDED FOR MECHANICAL VENTILATION.  |

- 1 ALUMINIUM SHINGLE RAINSCREEN CLADDING
- 2 DOUBLED GLAZED CURTAIN WALL SYSTEM WITH SOLAR CONTROL AND TINTED GLASS - COLOUR LIGHT GREEN
- 3 GLAZED BACK PAINTED SPANDREL PANEL INFILLS TO CURTAIN WALLING
- 4 PORCELAIN RAINSCREEN CLADDING
- 5 PPC LOUVRES DARK GREY
- 6 PPC ALUMINIUM MULLIONS AND TRANSOMS
- 7 PPC ALUMINIUM FINNS TO CURTAIN WALL MULLIONS COLOUR TO MATCH CURTAIN WALL FRAME
- 8 PORCELAIN SPANDREL PANEL WITH SILICON JOINT
- 9 PRESSED ALUMINIUM ROOF EDGE PROFILE (WHITE COLOUR)
- 10 PRESSED METAL VERTICAL FINNS (WHITE COLOUR)
- 11 PPC METAL FLASHING TO THE TOP OF THE TURNSTILES AND GATES FASCIA EDGE
- 12 SINGLE GLAZED CURTAIN WALL SYSTEM TO TERRACE
- 13 STANDING SEAM ROOF
- 14 PPC MONORAIL SYSTEM - REMOVED.
- 15 PPC PROFILED ALUMINIUM RAINSCREEN CLADDING
- 16 PPC ALUMINIUM SPANDREL PANEL
- 17 PORCELAIN RAINSCREEN CLADDING WITH VERTICAL PATTERN
- 18 STANDING SEAM CANOPY WITH ALUMINIUM SOFFIT PANELS
- 19 WHITE PAINTED CIRCULAR HOLLOW SECTION STEEL PERIMETER COLUMNS
- 20 PRESSED METAL FLASHING DETAIL TO ROOF PARAPET - COLOUR TO MATCH LOUVRES
- 21 PRESSED METAL FLASHING DETAIL TO WINDOWS REVEALS COLOUR TO MATCH CURTAIN WALL FRAMING
- 22 EXIT GATES WITH GALVANISED AND POWDER COATED DOUBLE MESH INFILL PANELS
- 23 HPL RAINSCREEN CLADDING
- 24 WAYFINDING TO TURNSTILES AND GATES
- 25 GALVANISED AND POWDER COATED DOUBLE MESH SECURITY FENCING WITH VERTICAL POST
- 26 GREEN WALL WITH NATURAL PLANTING AND INTEGRATED IRRIGATION SYSTEM - PLANTING SPECIES TO BE DEVELOPED WITH SPECIALIST CONTRACTOR WHO WILL DEVELOP THE SUSTAINABLE PLANTING SPECIES SCHEME. IRRIGATION SYSTEM TO INCORPORATE NECESSARY FERTILISER DOSING. GREEN WALL SYSTEM AS BIOTECHTURE OR ANS GLOBAL OR SIMILAR.

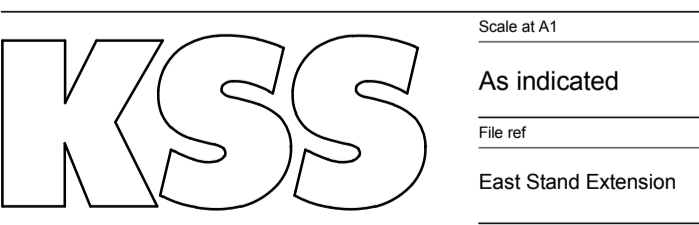
**NOTES**  
 To be read in conjunction with the following drawing series:  
 010,020,030,110,120,140,200,240,300,340,800.

**PLANNING**

Client: RFU

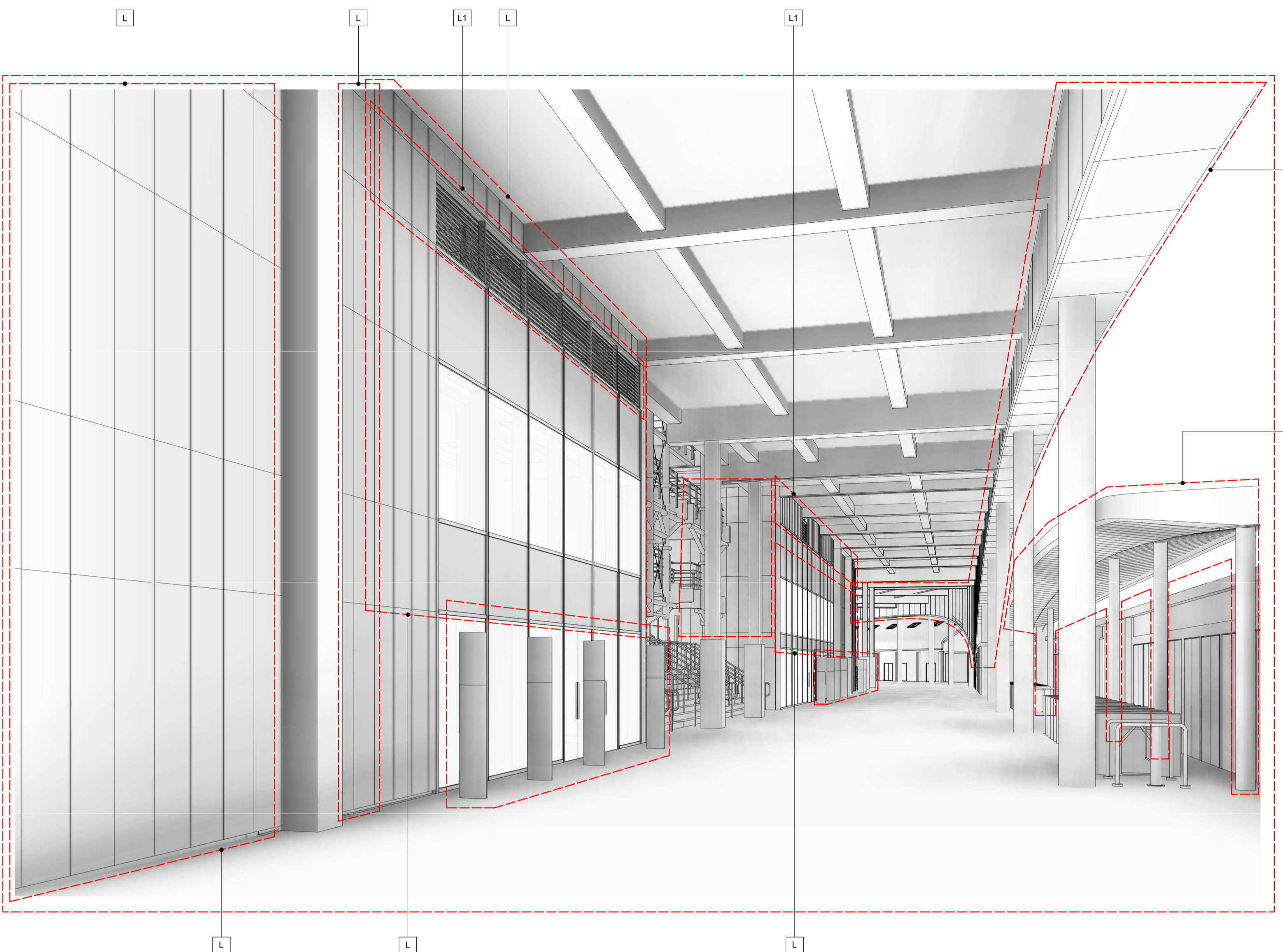
Project: TWICKENHAM STADIUM EAST STAND EXTENSION

**DETAILED ELEVATIONS**

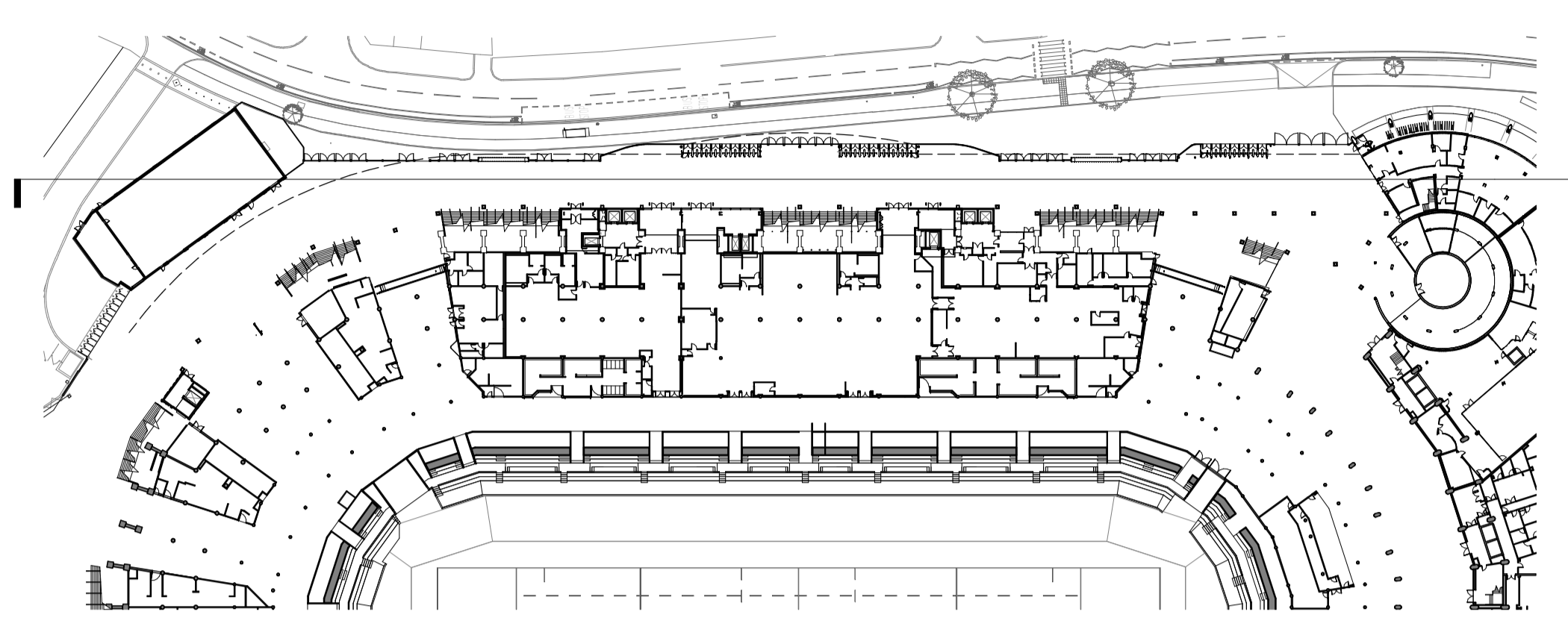


|                     |                     |            |              |
|---------------------|---------------------|------------|--------------|
| London              | Sevenoaks           | KI         | 09.03.17     |
| 1 James Street      | 7 Blighs Walk       | Checked by | Date checked |
| London W1U 1DR      | Sevenoaks TN13 1DB  | LP         | 09.03.17     |
| T+44(0)20 7907 2222 | T+44(0)20 7907 2222 |            |              |
| F+44(0)20 7907 2299 | F+44(0)1732 467 841 |            |              |

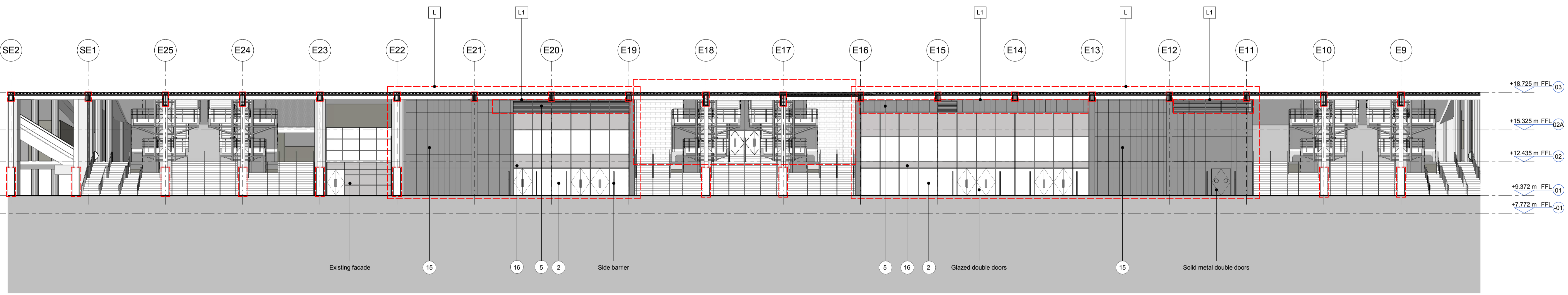
| Doc ref    | Project number | Drawing number | Revision |
|------------|----------------|----------------|----------|
| 100-KSS-DR | 15735          | 340            | P02      |



**1** 3D VIEW  
 LEVEL 1 vent unit - external view01



**2** PLAN  
 KEY TO ELEVATION OF GROUND FIRST FLOOR  
 1:1000



**3** ELEVATION  
 CONCOURSE NORTH EAST ELEVATION  
 1:200