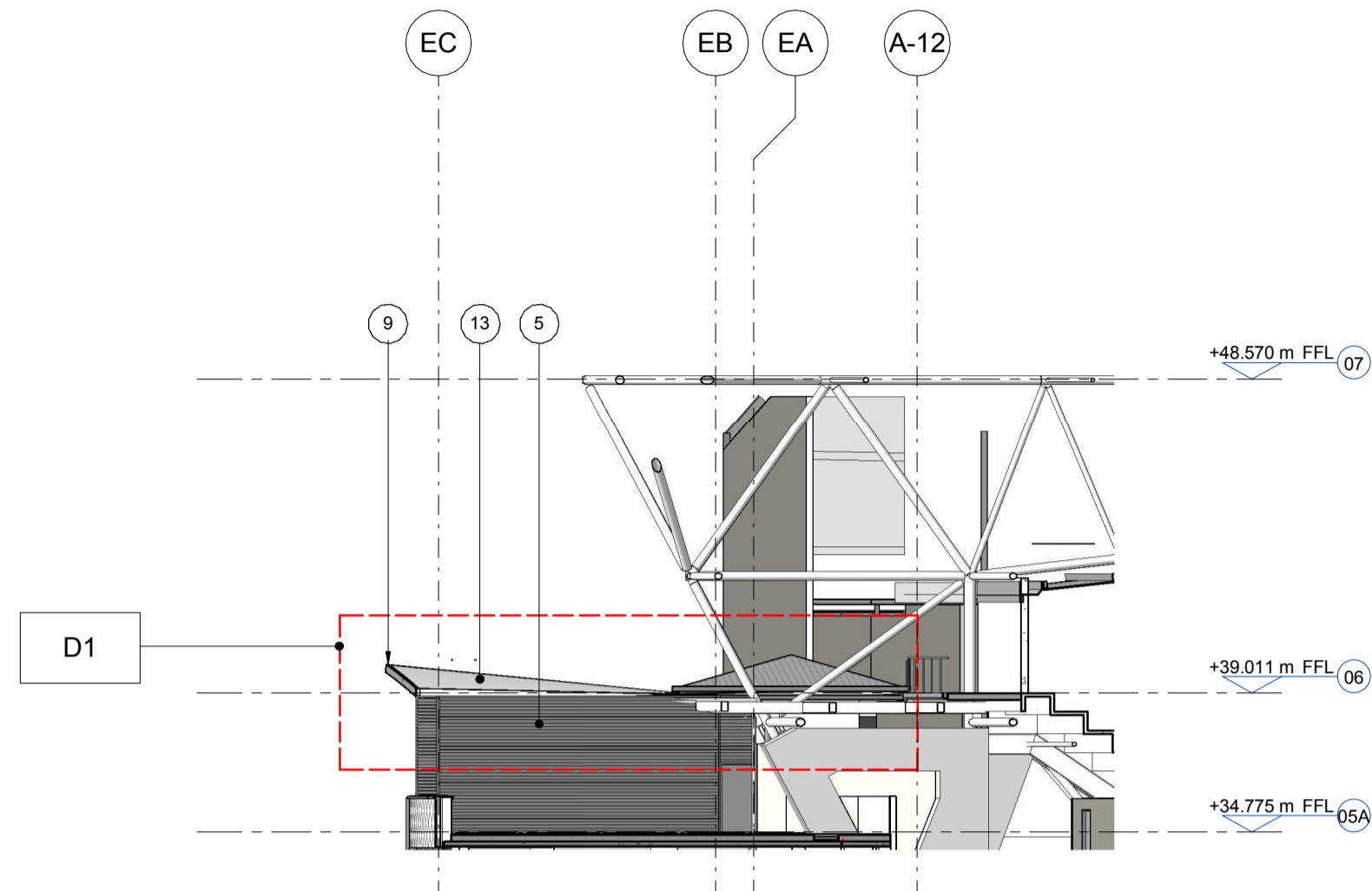


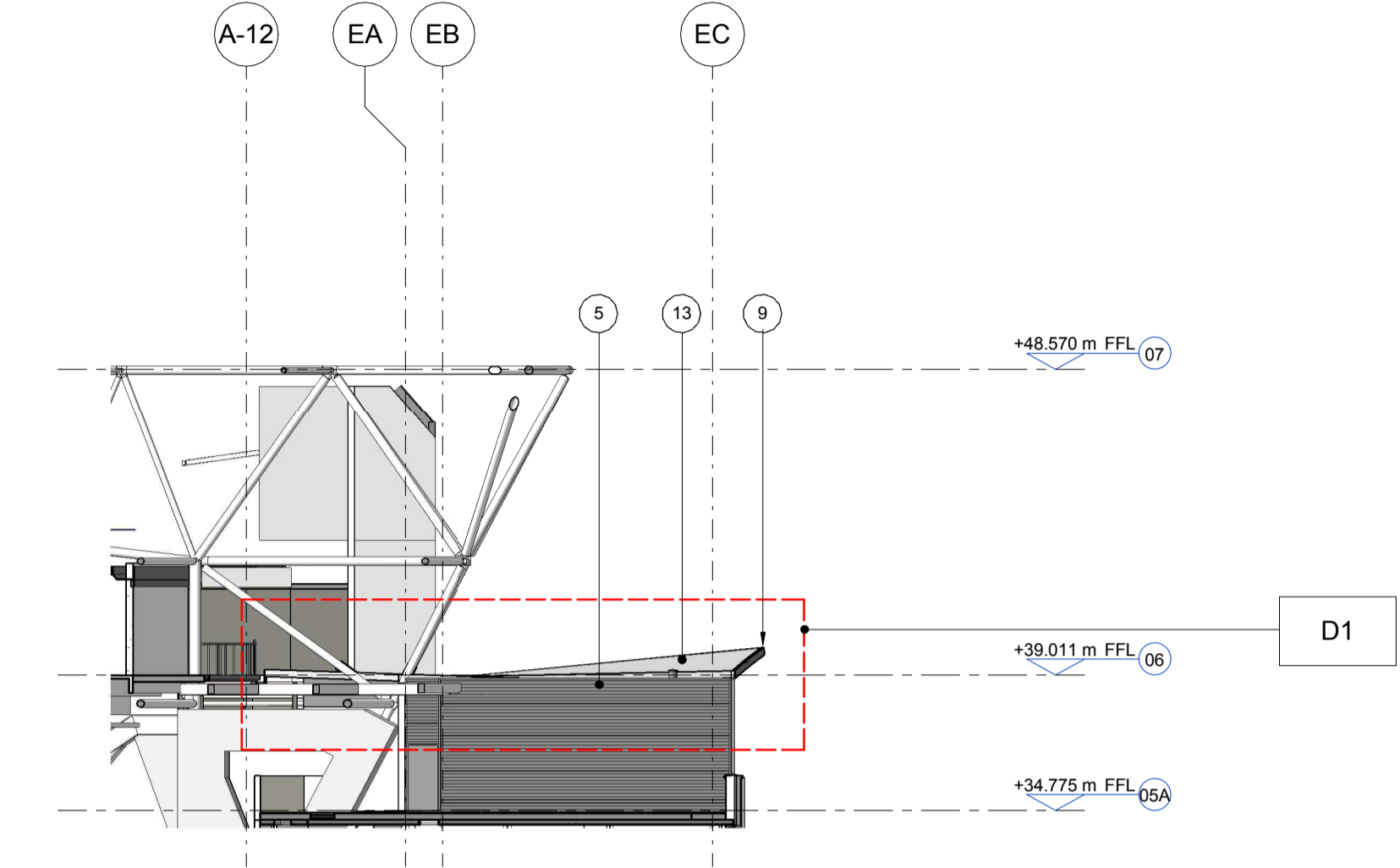
Revisions			
P01	14.07.16	ADDITIONAL PLANNING INFORMATION	KI PY
P02	27.04.17	PLANNING AMENDMENT SUBMISSION	KI PY

Revision Notes

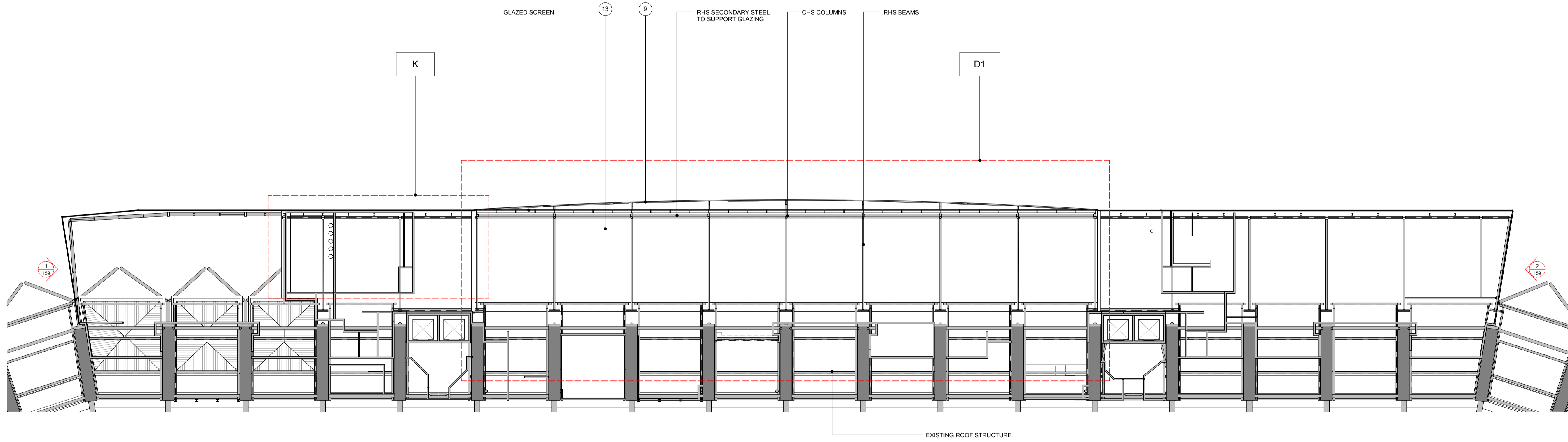
PLANNING AMENDMENTS	
A	GENERAL AMENDMENTS TO THE SOUTH END.
A1	INCREASED SHINGLES CLADDING AREA AND CURTAIN WALL REDUCED ACCORDINGLY.
A2	REDUCED MASSING AND REVISED INTERFACE WITH THE SOUTH STAND.
B	PPC LOUVRES LOCATED TO THE BOWL SIDE HAVE BEEN OMITTED.
C	CURTAIN WALL SETTING OUT REVISED GENERALLY. SILICONE JOINTS TO TRANSOMS AND MULLION REPLACED WITH CAPPED SYSTEM. LEVEL 04 PPC LOUVRES SETTING OUT & HEIGHT REVISED. MONORAIL FOR ABSEILING REMOVED.
D	GENERAL AMENDMENTS TO THE CENTRAL ELEVATION CANOPY AT LEVEL 5A REVISED GENERALLY AND STANDING SEAM REPLACED WITH SINGLE PLY MEMBRANE. SUPPORT COLUMNS TO ROOF CANOPY REVISED. SQUARE FASCIA TO ROOF EDGE.
D1	LEVEL 5A GLAZED SCREEN EXTENDED IN HEIGHT AND PPC LOUVRES INCLUDED AT LOW LEVEL.
D2	INCREASED SHINGLES CLADDING AREA AND CURTAIN WALL AREA REDUCED ACCORDINGLY. FOUR VERTICAL FINIS REMOVED.
D3	PORCELAIN PANELS WITH SLOTTED HOLES FOR VENTILATION REPLACED WITH PPC LOUVRES. EXPRESSED HORIZONTAL PATTERN TO PORCELAIN PANELS OMITTED.
E	GENERAL AMENDMENTS TO THE NORTH END PORCELAIN CLADDING REPLACED WITH PPC ALUMINIUM CLADDING.
E1	GREEN WALL TO THE NORTH END EXTENDED AND PPC LOUVRES REMOVED.
E2	INCREASED SHINGLES CLADDING AREA AND CURTAIN WALL REDUCED ACCORDINGLY.
E3	FENCELINE, GATE AND PERIMETER COLUMNS SETTING OUT REVISED.
F	CANOPY TO TURNSTILES REVISED.
F1	PORCELAIN PATTERN CHANGED FROM HORIZONTAL TO VERTICAL.
G	PORCELAIN PANELS TO THE SOFFIT OF THE ARCH REPLACED WITH PPC ALUMINIUM PANELS. PORCELAIN PANELS SETTING OUT REVISED.
H	ROOF TO LEVEL 5A (NORTH END) EXTENDED.
K	GLAZED SPANDREL PANELS REPLACED WITH METAL SPANDREL PANEL. PORCELAIN PANELS REPLACED WITH PPC ALUMINIUM CLADDING.
L	PPC LOUVRES INCLUDED FOR MECHANICAL VENTILATION.



1 ELEVATION
 LEVEL 5A NORTH ELEVATION
 1:200



2 ELEVATION
 LEVEL 5A SOUTH ELEVATION
 1:200



3 PLAN
 LEVEL 5A REFLECTED CEILING PLAN
 1:200

- 1 ALUMINIUM SHINGLE RAINSCREEN CLADDING
- 2 DOUBLED GLAZED CURTAIN WALL SYSTEM WITH SOLAR CONTROL AND TINTED GLASS - COLOUR LIGHT GREEN
- 3 GLAZED BACK PAINTED SPANDREL PANEL INFILLS TO CURTAIN WALLING
- 4 PORCELAIN RAINSCREEN CLADDING
- 5 PPC LOUVRES DARK GREY
- 6 PPC ALUMINIUM MULLIONS AND TRANSOMS
- 7 PPC ALUMINIUM FINIS TO CURTAIN WALL MULLIONS COLOUR TO MATCH CURTAIN WALL FRAME
- 8 PORCELAIN SPANDREL PANEL WITH SILICON JOINT
- 9 PRESSED ALUMINIUM ROOF EDGE PROFILE (WHITE COLOUR)
- 10 PRESSED METAL VERTICAL FINIS (WHITE COLOUR)
- 11 PPC METAL FLASHING TO THE TOP OF THE TURNSTILES AND GATES FASCIA EDGE
- 12 SINGLE GLAZED CURTAIN WALL SYSTEM TO TERRACE
- 13 SINGLE PLY MEMBRANE ROOF
- 14 PPC MONORAIL SYSTEM - REMOVED.
- 15 PPC PROFILED ALUMINIUM RAINSCREEN CLADDING
- 16 PPC ALUMINIUM SPANDREL PANEL
- 17 PORCELAIN RAINSCREEN CLADDING WITH VERTICAL PATTERN
- 18 STANDING SEAM CANOPY WITH ALUMINIUM SOFFIT PANELS
- 19 WHITE PAINTED CIRCULAR HOLLOW SECTION STEEL PERIMETER COLUMNS
- 20 PRESSED METAL FLASHING DETAIL TO ROOF PARAPET - COLOUR TO MATCH LOUVRES
- 21 PRESSED METAL FLASHING DETAIL TO WINDOWS REVEALS COLOUR TO MATCH CURTAIN WALL FRAMING
- 22 EXIT GATES WITH GALVANISED AND POWDER COATED DOUBLE MESH INFILL PANELS
- 23 HPL RAINSCREEN CLADDING
- 24 WAYFINDING TO TURNSTILES AND GATES
- 25 GALVANISED AND POWDER COATED DOUBLE MESH SECURITY FENCING WITH VERTICAL POST
- 26 GREEN WALL WITH NATURAL PLANTING AND INTEGRATED IRRIGATION SYSTEM - PLANTING SPECIES TO BE DEVELOPED WITH SPECIALIST CONTRACTOR WHO WILL DEVELOP THE SUSTAINABLE PLANTING SPECIES SCHEME. IRRIGATION SYSTEM TO INCORPORATE NECESSARY FERTILISER DOSING. GREEN WALL SYSTEM AS BIOTECTURE OR ANS GLOBAL OR SIMILAR.

NOTES
 To be read in conjunction with the following drawing series:
 010,020,030,110,120,140,200,240,300,340,800.

PLANNING

Client
 RFU
 Project

TWICKENHAM STADIUM EAST STAND EXTENSION

LEVEL 5A TERRACE UNDERSIDE RCP

Scale at A1
KSS
 As indicated
 File ref
 East Stand Extension
 Drawn by Date drawn

London 1 James Street London W1U 1DR T+44(0)20 7907 2222 F+44(0)20 7907 2299	Sevenoaks 7 Blighs Walk Sevenoaks TN13 1DB T+44(0)20 7907 2222 F+44(0)1732 467 841	KI 27.04.17	Checked by Date checked
		PY 27.04.17	

Doc ref	Project number	Drawing number	Revision
100-KSS-DR	15735	159	P02