
Rugby Football Union

Section 73 Application - Design Amendments Summary

Twickenham Stadium - East Stand Extension

28 April 2017



Introduction

This document summarises the design changes illustrated in the drawings and images submitted as part of the section 73 application. The full list of the revised drawings submitted is included in this chapter. All drawings can be downloaded from the London Borough of Richmond upon Thames planning portal. The present document selects the relevant drawings to facilitate the interpretation of the design changes.

SECTION 73 APPLICATION DRAWING LIST

006 1:500	PROPOSED EXTERNAL LANDSCAPING L01 PLAN	P03
007 1:100	PROPOSED LANDSCAPING SECTIONS	P02
110 1:500	LEVEL 1 PROPOSED GA PLAN	P03
111 1:500	LEVEL 2 PROPOSED GA PLAN	P03
112 1:500	LEVEL 2A PROPOSED GA PLAN	P03
113 1:500	LEVEL 3 PROPOSED GA PLAN	P03
114 1:500	LEVEL 4 PROPOSED GA PLAN	P03
115 1:500	LEVEL 4A PROPOSED GA PLAN	P03
116 1:500	LEVEL 5A PROPOSED GA PLAN	P03
117 1:500	LEVEL 6 PROPOSED GA PLAN	P03
118 1:500	LEVEL 7 PROPOSED ROOF GA PLAN	P03
143 1:500	LEVEL 1 GA PLAN - NORTH	P02
145 1:500	LEVEL 2 GA PLAN - NORTH	P02
147 1:500	LEVEL 3 GA PLAN - NORTH	P02
148 1:500	LEVEL 3 GA PLAN - SOUTH	P02
149 1:500	LEVEL 4 GA PLAN - NORTH	P02
150 1:500	LEVEL 4 GA PLAN - SOUTH	P02
151 1:500	LEVEL 4A GA PLAN - NORTH	P02
152 1:500	LEVEL 4A GA PLAN - SOUTH	P02
153 1:500	LEVEL 5A GA PLAN - NORTH	P02
154 1:500	LEVEL 5A GA PLAN - SOUTH	P02
155 1:500	LEVEL 6 GA PLAN - NORTH	P02
156 1:500	LEVEL 6 GA PLAN - SOUTH	P02
159 1:500	LEVEL 5A TERRACE UNDERSIDE RCP	P01
200 1:500	GA SECTIONS	P03
201 1:200	GA SECTION A	P03
202 1:200	GA SECTION B	P03
203 1:200	GA SECTION C	P03
240 1:50	TYPICAL FACADE CURTAIN WALL	P02
241 1:50	TYPICAL STREET FRONTAGE 1	P02
242 1:50	TYPICAL STREET FRONTAGE 2	P02
243 1:20	DETAILED FAÇADE SECTIONS	P02
300 1:500	GA ELEVATION 1	P03
301 1:500	GA ELEVATION 2	P03
302 1:500	GA ELEVATION 3	P03
303 1:100	DETAILED ELEVATION	P03
340 1:200	DETAILED ELEVATIONS	P02
341 1:100	DETAILED ELEVATIONS	P03
342 1:100	DETAILED ELEVATIONS	P02
343 1:200	SOUTH STAND JUNCTION AXONOMETRIC	P02
344 1:100	DETAILED EXTENDED ELEVATION	P02
345 1:20	DETAILED ELEVATION	P02
346 1:100	LEVEL 5A TERRACE ELEVATIONS	P02
347 1:100	PROPOSED CURTAIN WALLING REFLECTANCE	P01
1000 1:100	EXTERNAL WORKS/LANDSCAPING/TURNSTILE SETTING OUT PLANS ZONE 1	P02
1001 1:100	EXTERNAL WORKS/LANDSCAPING/TURNSTILE SETTING OUT PLANS ZONE 2	P02
1002 1:100	EXTERNAL WORKS/LANDSCAPING/TURNSTILE SETTING OUT PLANS ZONE 3	P02
1003 1:100	EXTERNAL WORKS/LANDSCAPING/TURNSTILE SETTING OUT PLANS ZONE 4	P02
6000 N/A	VISUALISATION FROM THE SOUTH EAST (WITH PEOPLE)	P02
6001 N/A	VISUALISATION FROM THE SOUTH EAST (WITHOUT PEOPLE)	P02
6002 N/A	VISUALISATION FROM THE NORTH EAST (WITH PEOPLE)	P02
6003 N/A	VISUALISATION FROM THE NORTH EAST (WITHOUT PEOPLE)	P03
6004 N/A	CONTEXTUAL VIEW FROM THE NORTH EAST	P03
6005 N/A	VIEW FROM WHITTONDENE ROUNDABOUT EXISTING & PROPOSED	P02
6006 N/A	VIEW FROM NORTH CARPARK EXISTING & PROPOSED	P02
6008 N/A	VISUALISATION FROM NORTH	P01

Summary of the changes

The proposed changes have been summarised, highlighted and coded on each drawing for visual reference. The changes are listed below and are divided into groups each coded with a letter.

A) Amendments to the south end:

- The massing of the East stand extension that interfaces with the south stand extension has been reduced to improve the interface with the existing building and facilitate buildability.
- The shingles cladding area has been increased and extended towards the north. The curtain walling area has been reduced accordingly (refer to elevation drawings 342, 343 and 344 P01 & P02).

B) Louvres at Level 5A :

- The metal louvres located at Level 5A along the interface with the soldier columns of the existing East stand have been omitted. There is no impact on the design visually from the street (please refer to visualisations - 6000 series). An extract of the visuals have been included in this document for comparison.

C) Curtain walling setting out amendments:

- The curtain walling (glazed areas) setting out has been revised generally as part of the design development and to facilitate buildability. The silicon joints to the transoms and mullions have been replaced with a capped system that is 60mm wide.

D) Amendments to the centre of the east elevation:

- The design of the canopy at Level 5A (external terrace level) and its supporting columns have been revised generally. The standing seam canopy finish has been replaced with a single ply membrane (refer to drawings 117, 202 P02 & P03 and 346 P01 & P02). The extent of the canopy cantilever has been reduced.
- The Level 5A glazed screen has been extended in height and aligned with the curtain walling of the level below. A strip of metal louvres have been included at low level to provide natural ventilation and reduce the negative impact of wind on the building user.
- The shingles cladding area has been increased and the curtain walling area has been reduced accordingly (refer to elevation drawings 344 P01 & P02 and 303 P02 & P03).
- The porcelain rainscreen panels with slotted holes for ventilation have been replaced with a combination of metal louvres and porcelain panels and the horizontal pattern has been omitted.

E) Amendments to the north end:

- The shingles cladding area has been increased and the curtain walling area has been reduced accordingly (refer to elevation drawings 341 P02 & P03 and 344 P01 & P02).
- The porcelain rainscreen cladding to the north lift has been replaced with polyester powder coated aluminium rainscreen cladding. The setting out of the panels has been revised accordingly.
- The area of green wall to the north end has been increased and the metal louvres have been removed.

F) Amendments to fenceline:

- The fenceline, gate and perimeter columns setting out have been slightly revised as part of the design process (refer to drawings 241 and 242 P01 & P02).
- The design of the canopy above the turnstiles has been revised and the extent of the roof slightly reduced in plan (refer to drawings 202 P02 & P03, 241 and 242 P01 & P02).

G) Amendments to the porcelain pattern to the base of the arch:

- The porcelain pattern (between grid E9 & E10 and E24 & E25 at ground floor level) have been changed from horizontal to vertical (refer to visuals and drawing 344 P01 & P02).

H) Amendments to the soffit of the feature arch:

- The porcelain panels to the soffit of the arch along the main elevation has been replaced with metal aluminium panels.

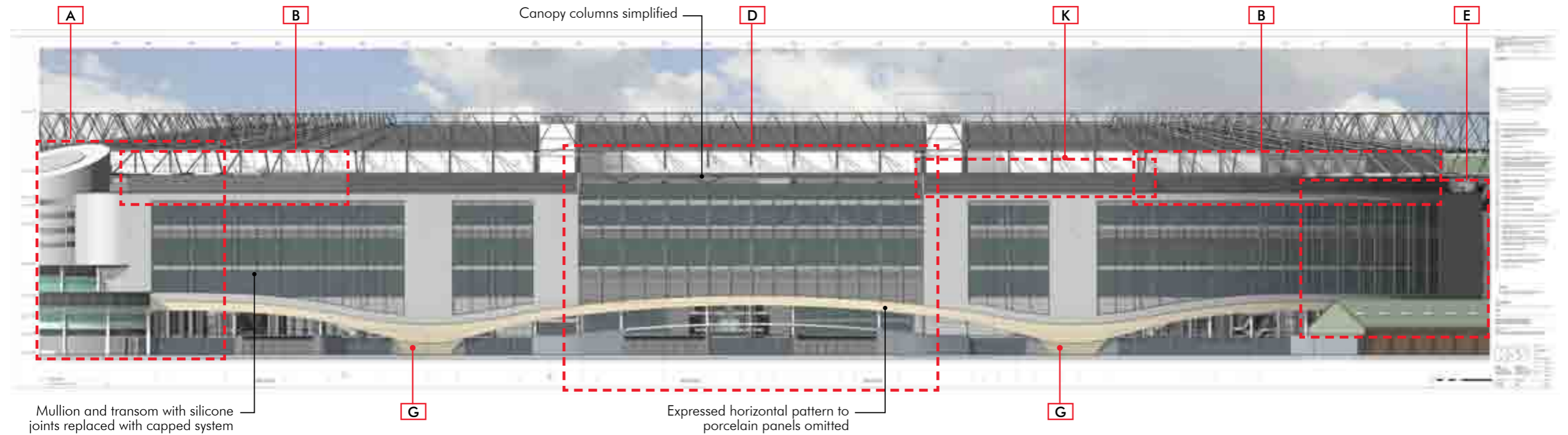
K) Amendments to Level 5A roof:

- The roof to Level 5A has been slightly extended towards the north however the change does not alter the external elevation (refer to drawing 117 P02 & P03).

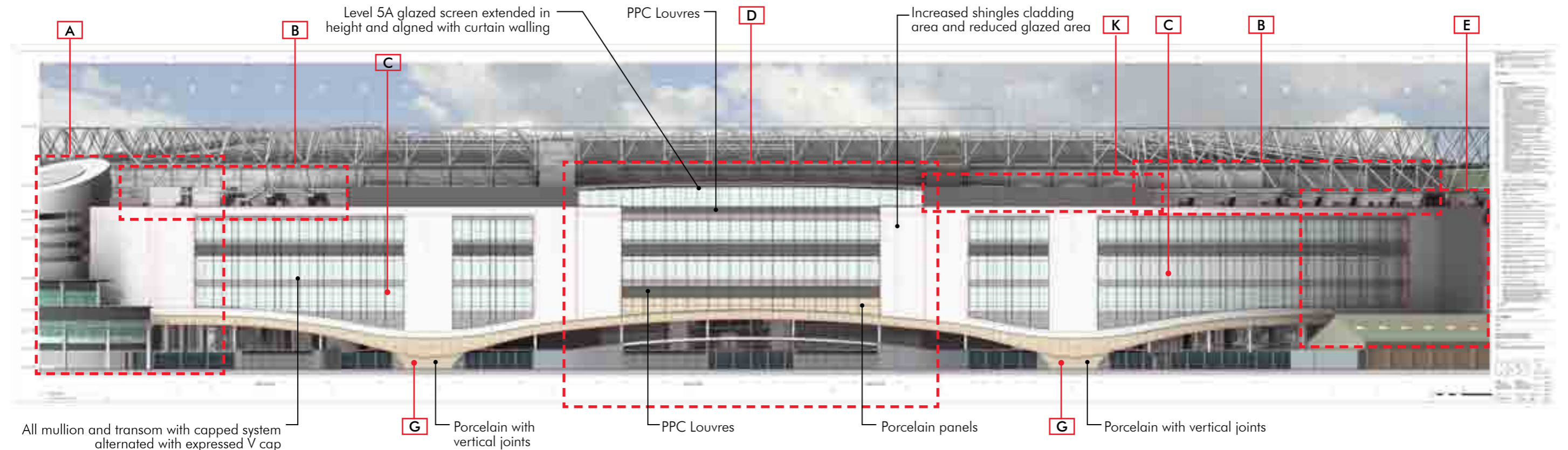
L) Amendments to the Level 01 (ground floor) concourse elevation:

- The glazed spandrel panels to the curtain walling at Level 01 along the ground floor concourse have been replaced with metal spandrel panels. The porcelain rainscreen cladding along the same elevation have been replaced with polyester powder coated aluminium cladding. Metal louvres have been added to facilitate mechanical ventilation.

East Elevation - Approved (Drawing No. 15735 - 344 P01)



East Elevation Amended - Section 73 (Drawing No. 15735 - 344 P02)



Visual from South East - Approved



Visualisation from South East
Drawing No. 15735 - 6000 P01

Visual from South East Amended - Section 73



Visualisation from South East
Drawing No. 15735 - 6000 P02

Visual from North East - Approved



Visualisation from North East
Drawing No. 15735 - 6003 P02

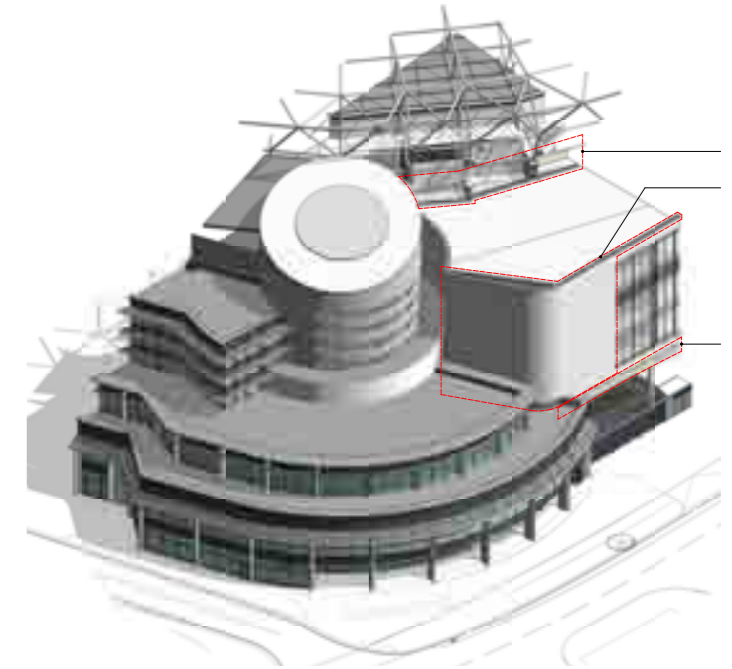
Visual from North East Amended - Section 73



Visualisation from North East
Drawing No. 15735 - 60003 P03

A - Amendments to the South End

- The massing of the East stand extension that interfaces with the south stand extension has been reduced to improve the interface with the existing building and facilitate buildability.
- The shingles cladding area has been increased and extended towards the north. The curtain walling area has been reduced accordingly (refer to elevation drawings 342, 343 and 344 P01 & P02).



South Elevations - Approved

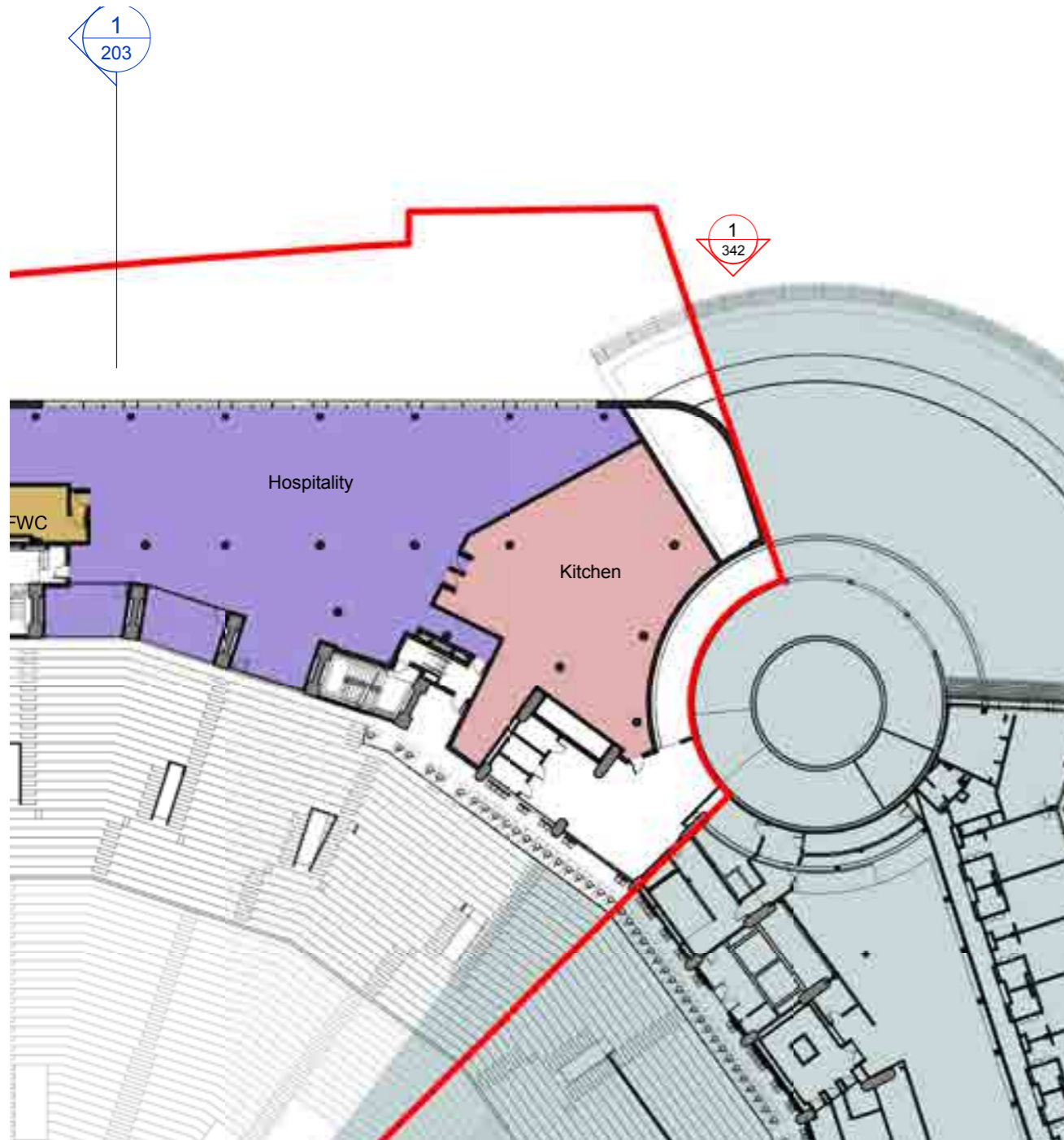
Drawing No. 15735 - 343 P01 & 6000 P01



South Elevations Amended - Section 73

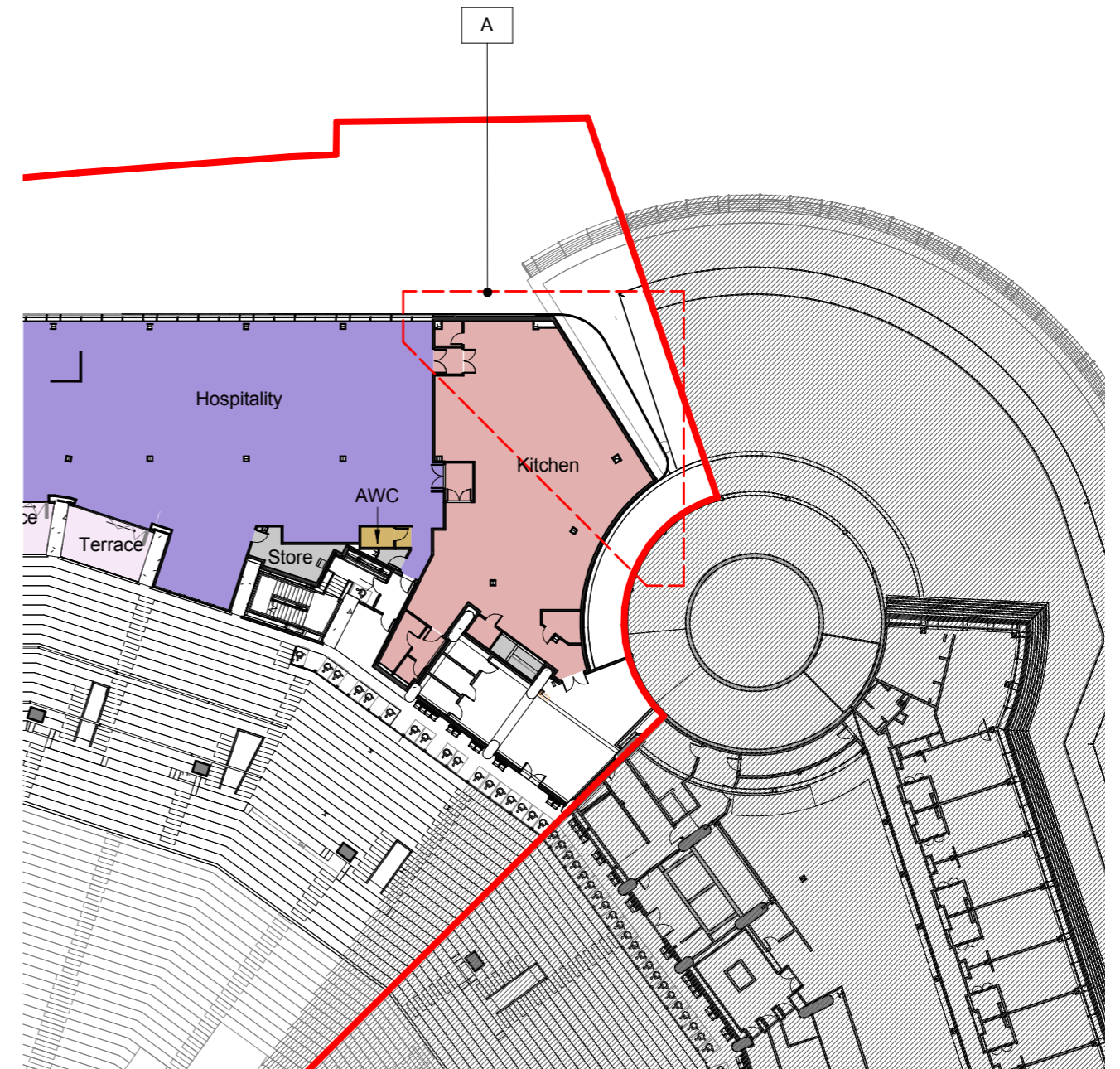
Drawing No. 15735 - 343 P02 & 6000 P02

A - Amendments to the South End



Typical Plan / Level 4A Plan - Approved

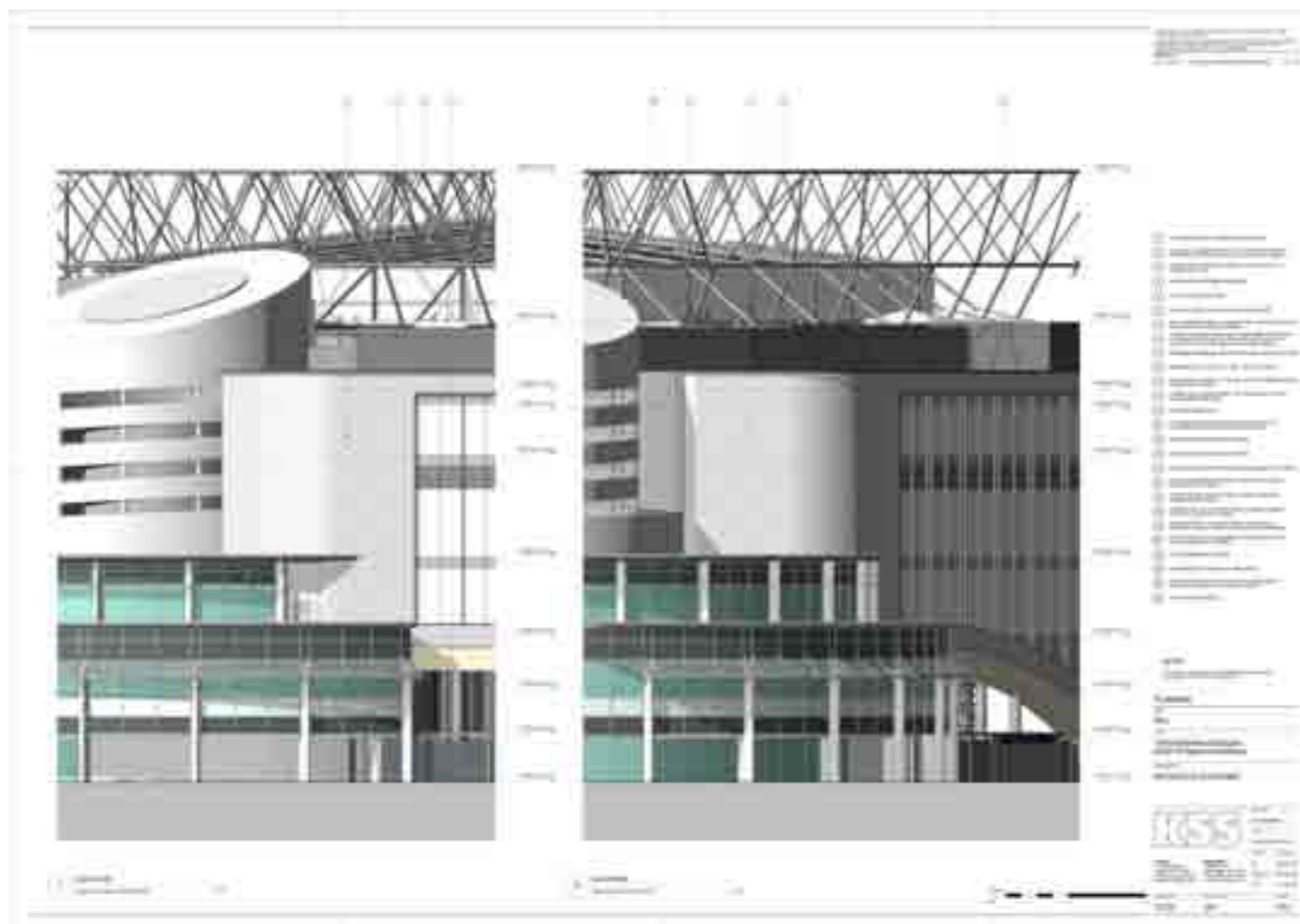
Drawing No. 15735 - 115 P02



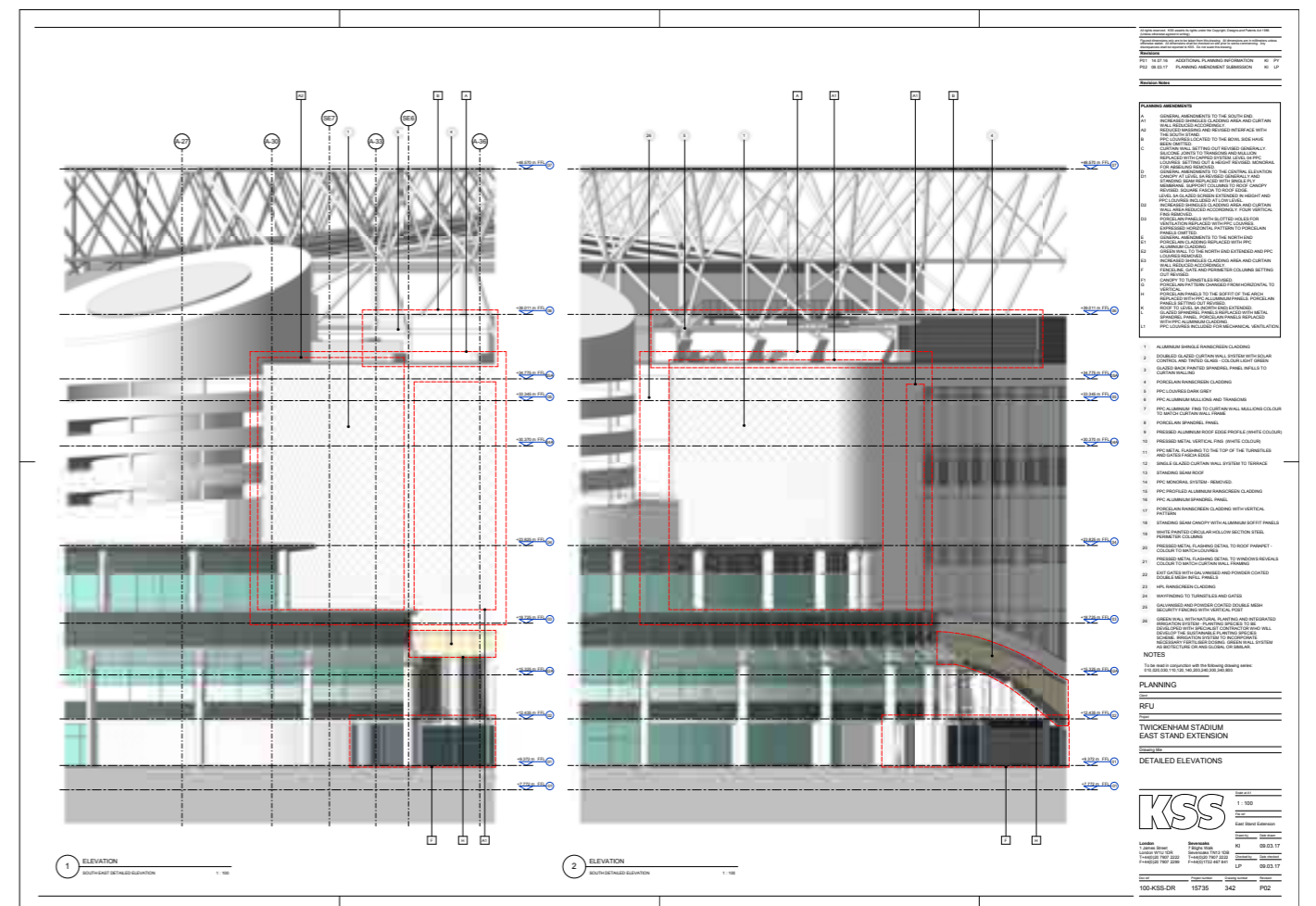
Typical Plan / Level 4A Plan Amended - Section 73

Drawing No. 15735 - 115 P03

A - Amendments to the South End



South Elevations - Approved Drawing No. 15735 - 342 P01



South Elevations Amended - Section 73 Drawing No. 15735 - 342 P02