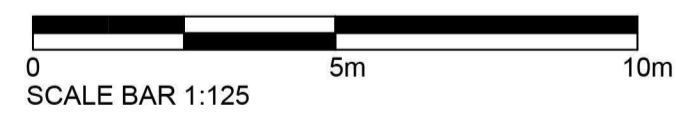
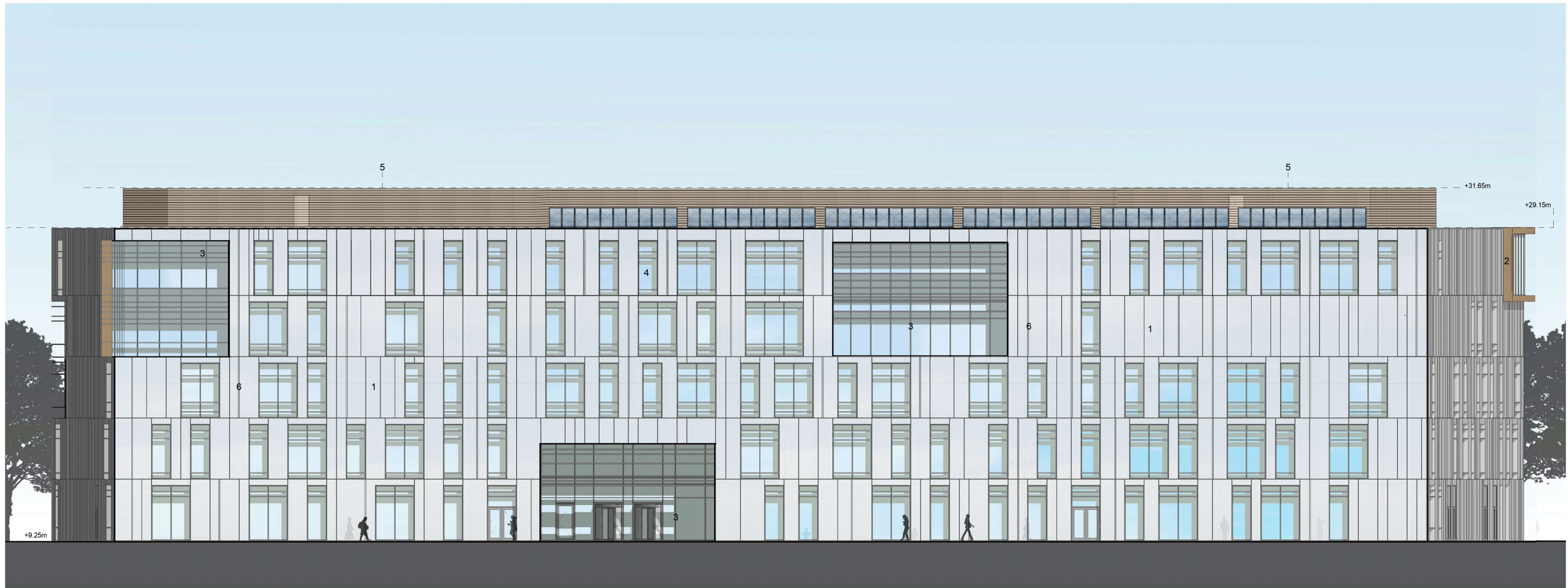


100  
Millimetres  
0 10



Material Key



- 1 Anodised Aluminium Rainscreen Cladding and Solar Shading - Neutral finish - ETSM or KME system
- 2 Anodised Aluminium Rainscreen Cladding - Bronze Finish - ETSM or KME system
- 3 PFC aluminium curtain walling, external windows and doors - Grey
- 4 3GG Cool-Lite glazing to windows and curtain walling
- 5 Terracotta baguettes as plant screening
- 6 Vertical facade strip lighting, GVA or similar

**SAFETY, HEALTH AND ENVIRONMENTAL INFORMATION**

In addition to the hazards/risks normally associated with the types of work detailed on this drawing, note the following:

**CONSTRUCTION**

**MAINTENANCE/CLEANING**

**DECOMMISSIONING/DEMOLITION**

It is assumed that all works will be carried out by a competent contractor working, where appropriate, to an approved method statement

Rev.	Date	Description	By	Chk'd	App'd
P03	07.06.17	Omission of staircase to roof	KD	CW	CW
P02	27.05.16	Brise soleil updated	KD	CW	CW
P01	01.04.16	Updates from planning response	KD	CW	CW

Drawing Status: **PLANNING** Submittal: **S2**

**ATKINS** Euston Tower  
286 Euston Road  
London  
NW1 3AT  
Tel: +44 (0) 207 121 2000  
Fax:  
www.atkinsglobal.com

Copyright © Atkins Limited (2013)

Client: **Richmond upon Thames College**

Project Title		Richmond upon Thames College			
Drawing Title		Proposed South Elevation			
Scale	Designed	Drawn	Checked	Authorised	
Original Size	Date	Date	Date	Date	Date
A1	18.03.2016	18.03.2016	18.03.2016	18.03.2016	18.03.2016
Drawing Number					Revision
5137894-ATK-MB-ZZ-DR-A-2001					03