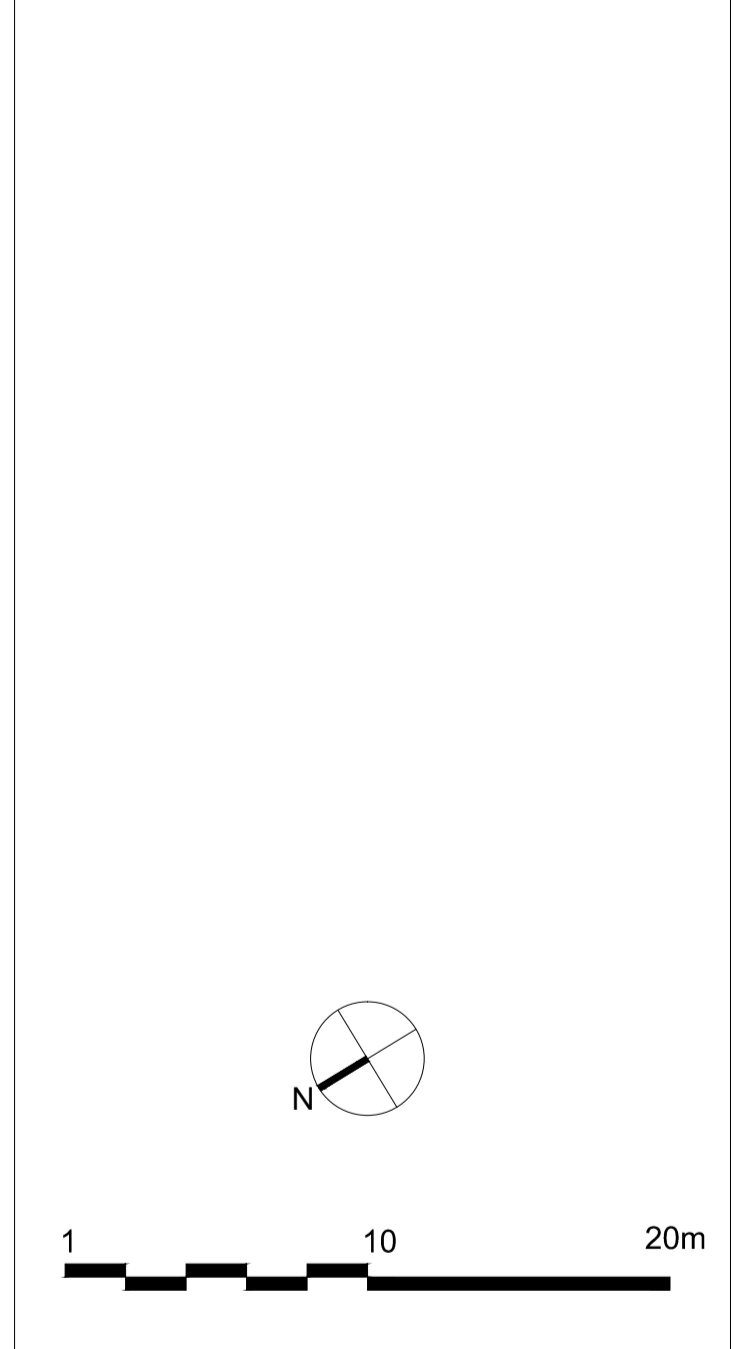
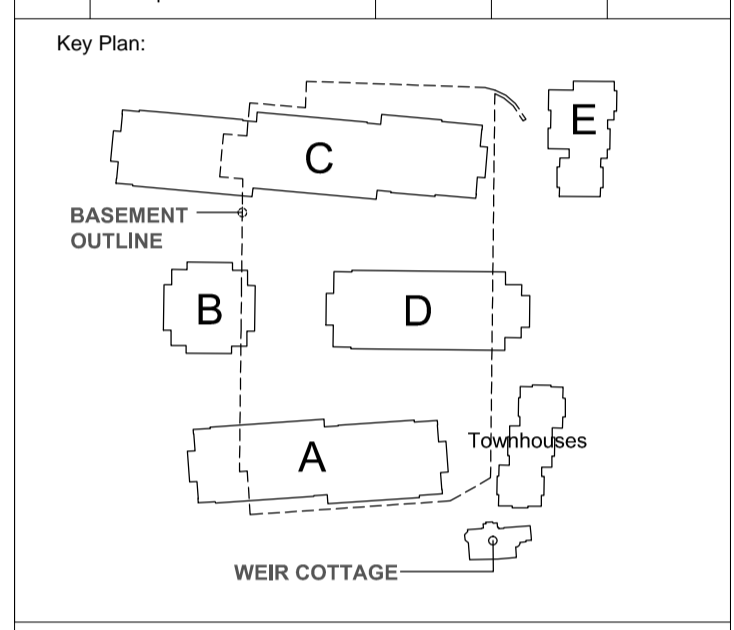




Do not scale from this drawing.  
Check all dimensions on site before fabrication or setting out.  
This document is protected by copyright and may not be reproduced without the permission of Hamiltons Architects Ltd.

Notes:

Rev:	Description:	Date:	Drawn by:	Issued by:
P01	-Steps associated with flood defence line revised as existing	11-09-15	EP	TPH
P02	-Block A & C Central entrance, Unit mix, Fire escape position, Ground floor balconies changed to suspended, Minor revision to staircase position to units next to the Thames -Width of each Block D units increased by 300mm -Position of Block D & E revised - rotated slightly to match Block B -Minor landscape adjustments to the central entrances of Blocks A & C and the rear of Blocks D & E -Sub-station position	15-04-16	EP	TPH
P03	-Central Block B Split into two Blocks, associated landscape revisions. -Entrance revised to provide an in and an out vehicular route	11-05-16	EP	TPH
P04	-Internal amendments to proposed central Blocks B1 & B2 providing an additional 4 units and associated minor revisions to the facades -Landscape strip to riverwalk reinstated	10-08-16	EP	TPH
P05	-Revised Section 73 Application Building names revised	23-03-17	NP	TPH
P06	Increased distance between the entrance and exit from the development	07-06-17	IG	PD



**PLANNING**

Project:  
Teddington Riverside

Drawing Title:  
Proposed First Floor Plan

**hamiltons architects**

Scale: 1:250 @A1	Drawn by: ES	Issued by: TPH	Date: 06-06-16
Project No: 14039	Drawing No: A-10-101	Rev: P06	