

DO NOT SCALE

SAFETY, HEALTH AND ENVIRONMENTAL INFORMATION

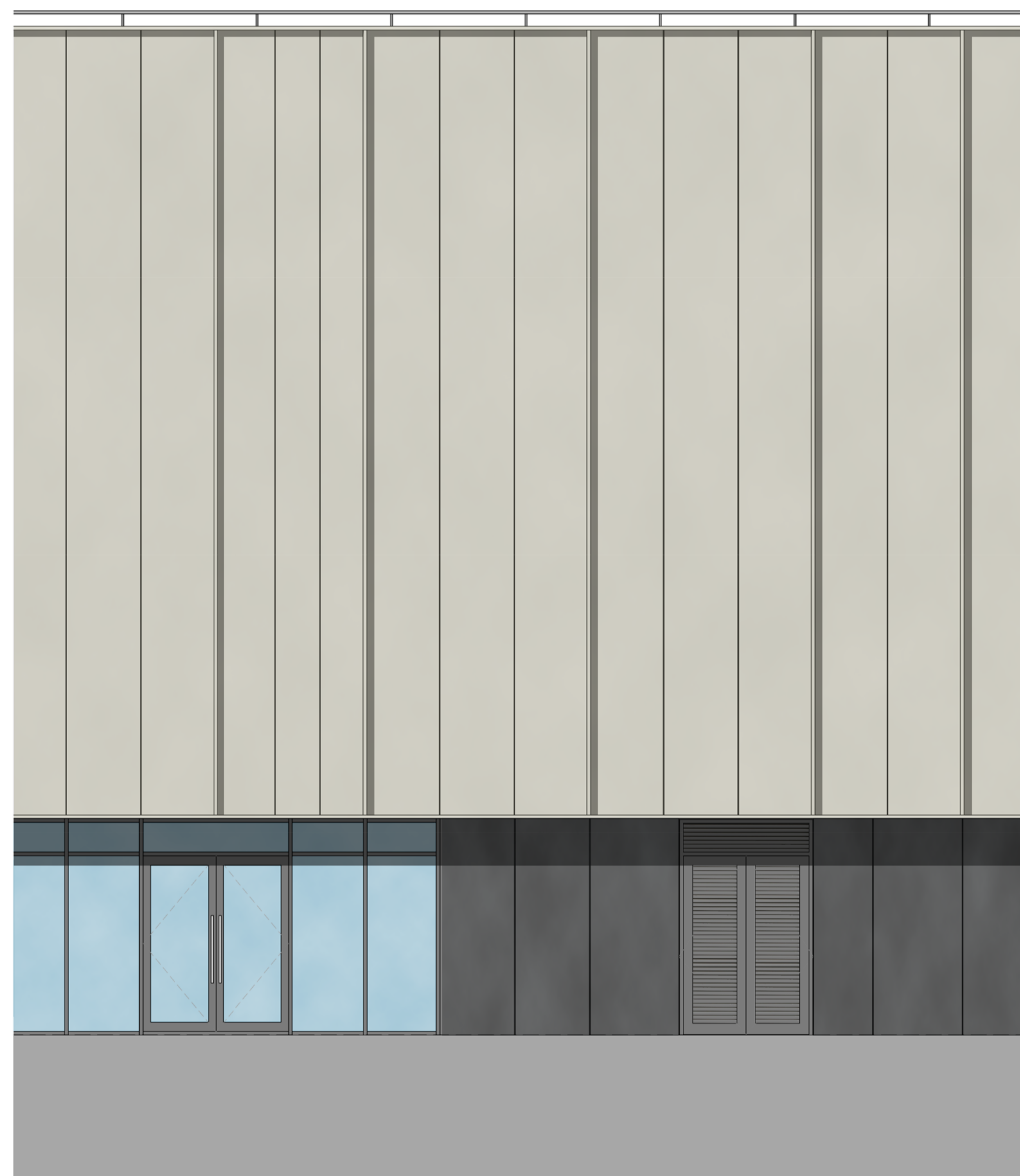
In addition to the hazards/risks normally associated with the types of work detailed on this drawing, note the following:

CONSTRUCTION

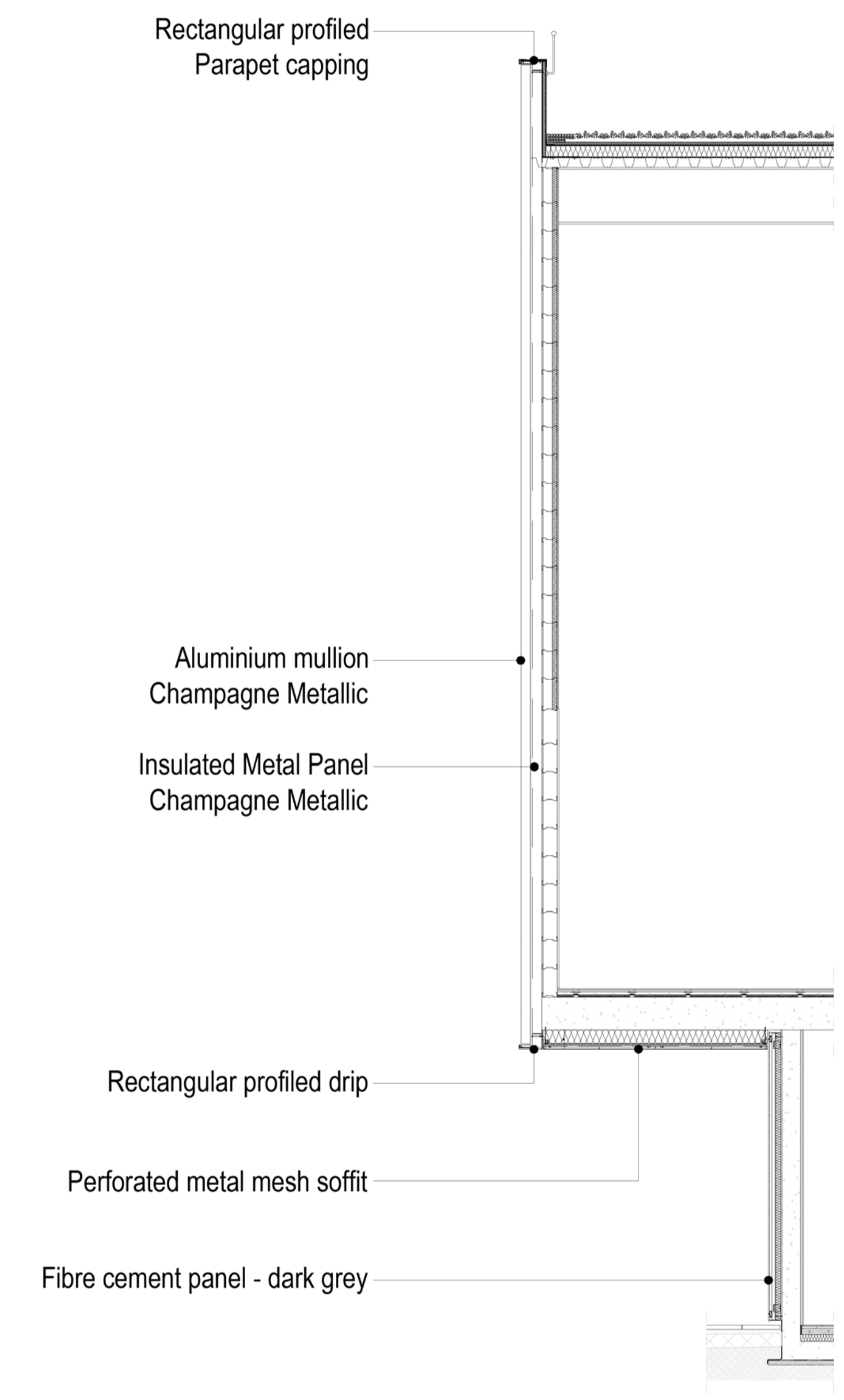
MAINTENANCE/CLEANING

DECOMMISSIONING/DEMOLITION

It is assumed that all works will be carried out by a competent contractor working, where appropriate, to an approved method statement



1 DETAILED ELEVATION
1 : 50



2 SECTION THROUGH FACADE
1 : 50

Rev.	Date	Description	By	Chk'd	App'd

Drawing Status Suitability

ATKINS Euston Road
285 Euston Road
London
NW1 3AT
Tel: +44 (0) 207 121 2000
Fax: +44 (0) 207 121 2111
www.atkinsglobal.com

Copyright © Atkins Limited (2013)

Client

Richmond upon Thames College
Building Futures • Achieving Ambitions

The Richmond upon Thames School

Project Title
**RICHMOND UPON THAMES COLLEGE
THE RICHMOND UPON THAMES SCHOOL
SPORTS FACILITY**

Drawing Title
**TYPICAL DETAILS
DETAILED ELEVATION
& SECTION THROUGH FACADE**

Scale	Designed	Drawn	Checked	Authorised
1 : 50	KD	SR	KD	CW

Original Size	Date	Date	Date	Date
A1	26/05/2017	26/05/2017	26/05/2017	26/05/2017

Drawing Number **5137894-ATK-SP-ZZ-DR-A-2500** Revision