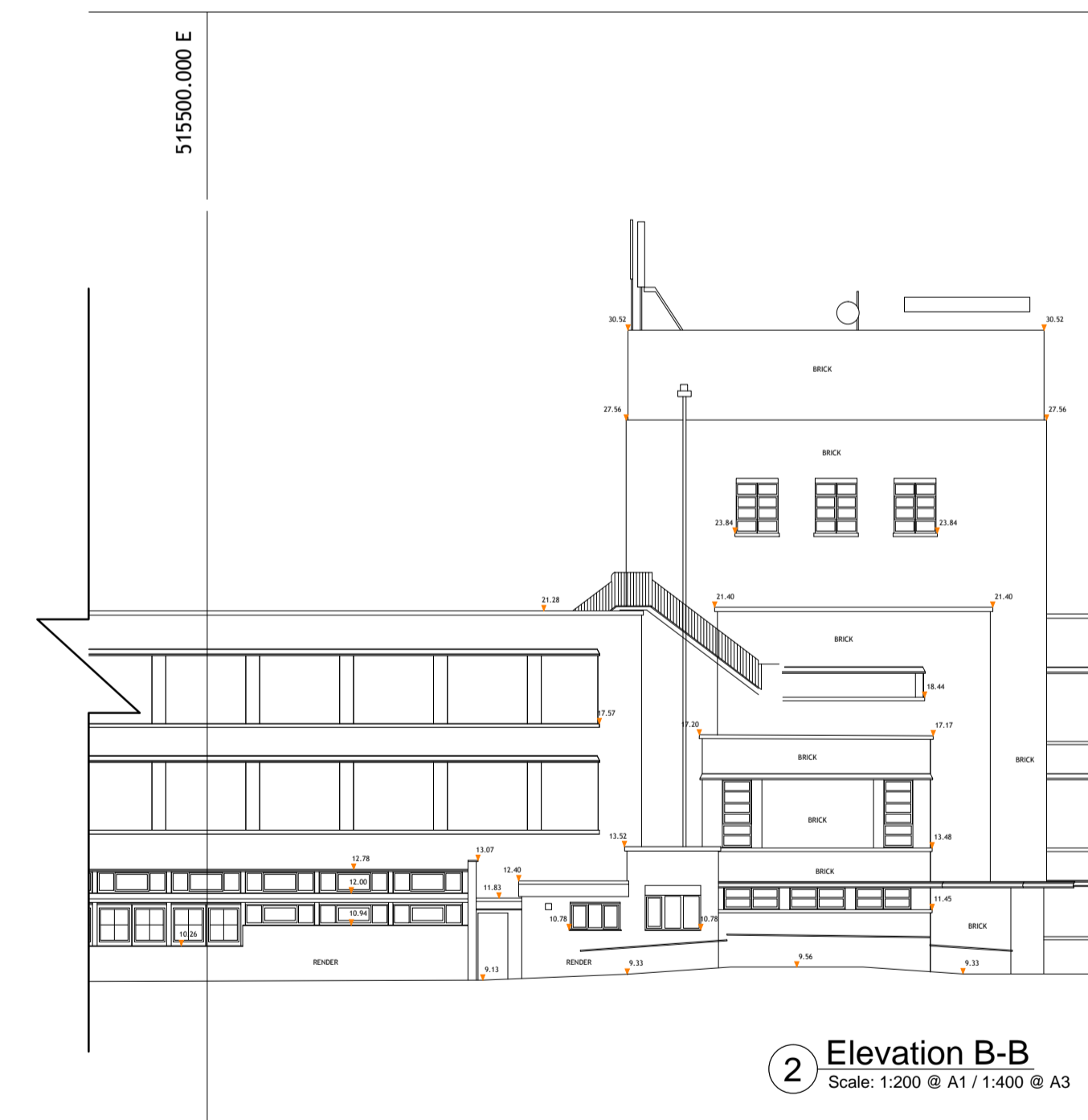


KEY PLAN
SCALE - NTS



Rev	Date	Revision Details	ec	gk
A2	22.04.16	Issued for Approval		

London: Unit 1, West Coate, House
3 Coate Street, London, E2 9AG
T 020 7729 5505 E london@ecearchitecture.com
Sussex: Brooklyn Chambers, 11 Goring Road
Worthing, West Sussex, BN12 4AP
T 01903 248777 E sussex@ecearchitecture.com
Bristol: Westworks, St. Nicholas House
31-34 High Street, Bristol, BS1 2AW
T 0117 315 8557 E bristol@ecwestworks.com
ECE Architecture
www.ecearchitecture.com

Client's Name
WILLMOTT DIXON

Job Title
REEC Schools

Drawing Title
Existing Elevation B-B

Scale
1:200 @ A1 / 1:400 @ A3



Drawn	Checked	Date
CC	GK	19.01.16

Job No	Drawing No	Rev
C1521	PL 101	A2

Status
APPROVAL