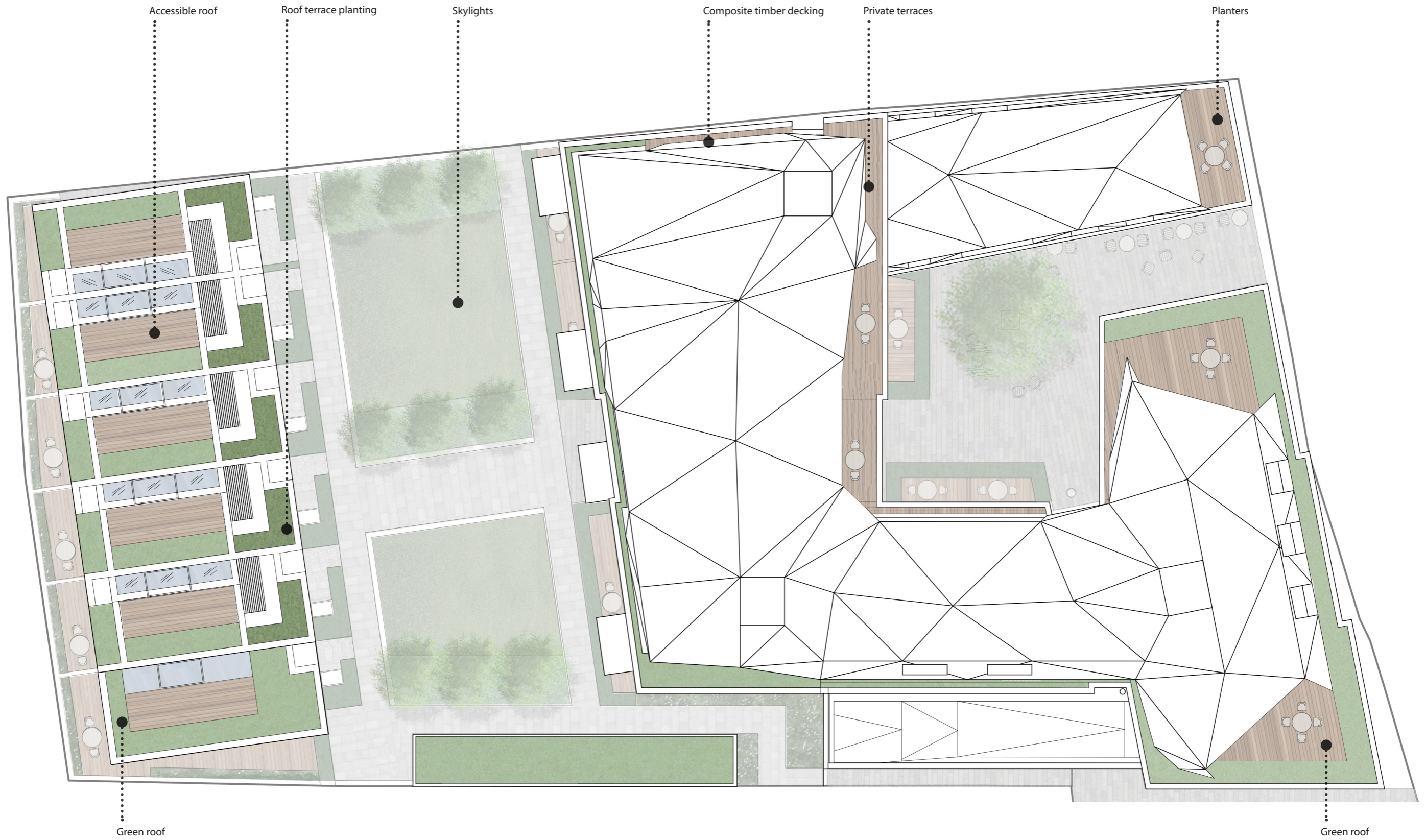
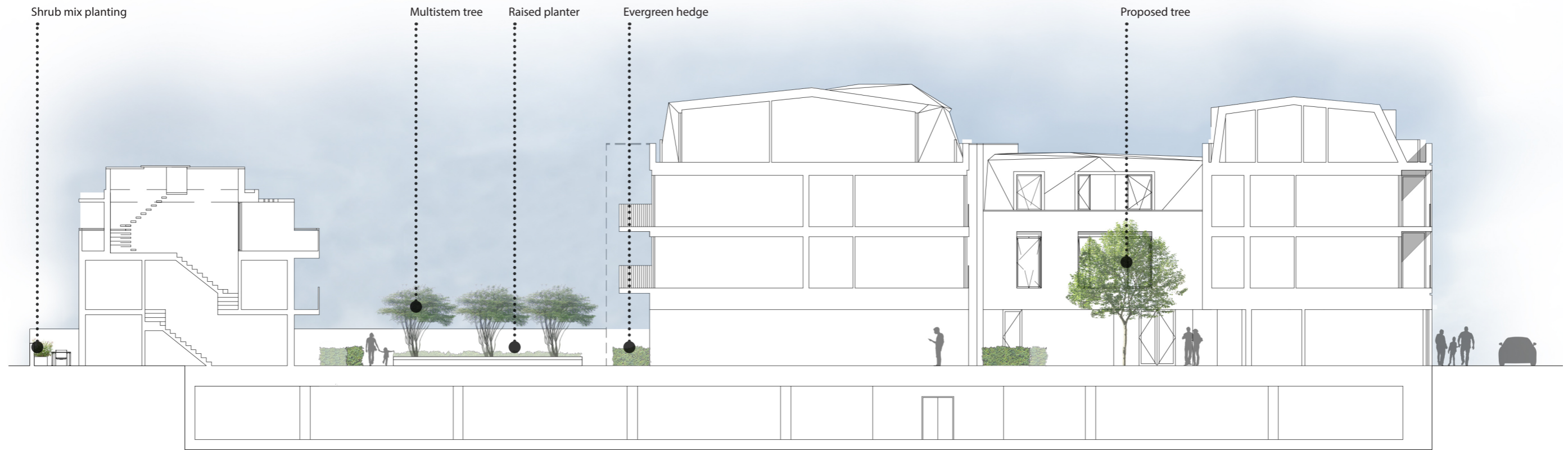


LANDSCAPE DESIGN / ROOF PLAN

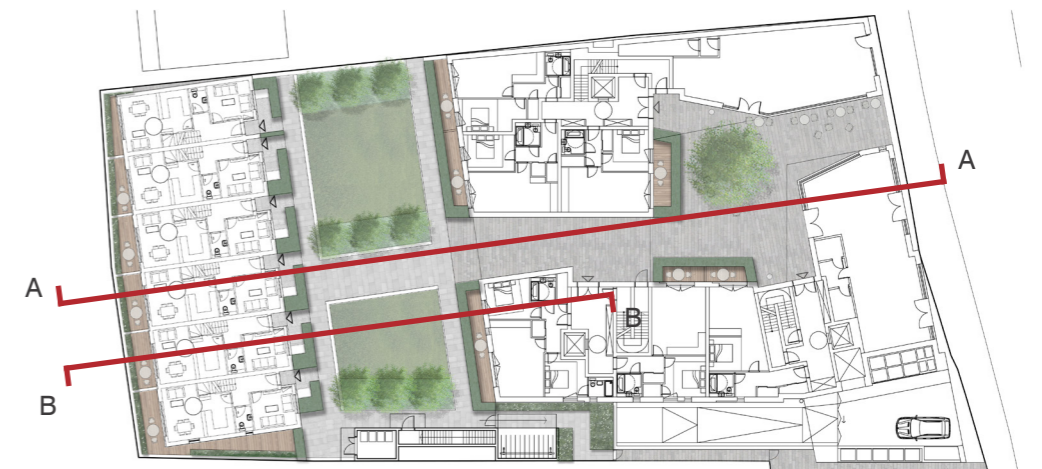
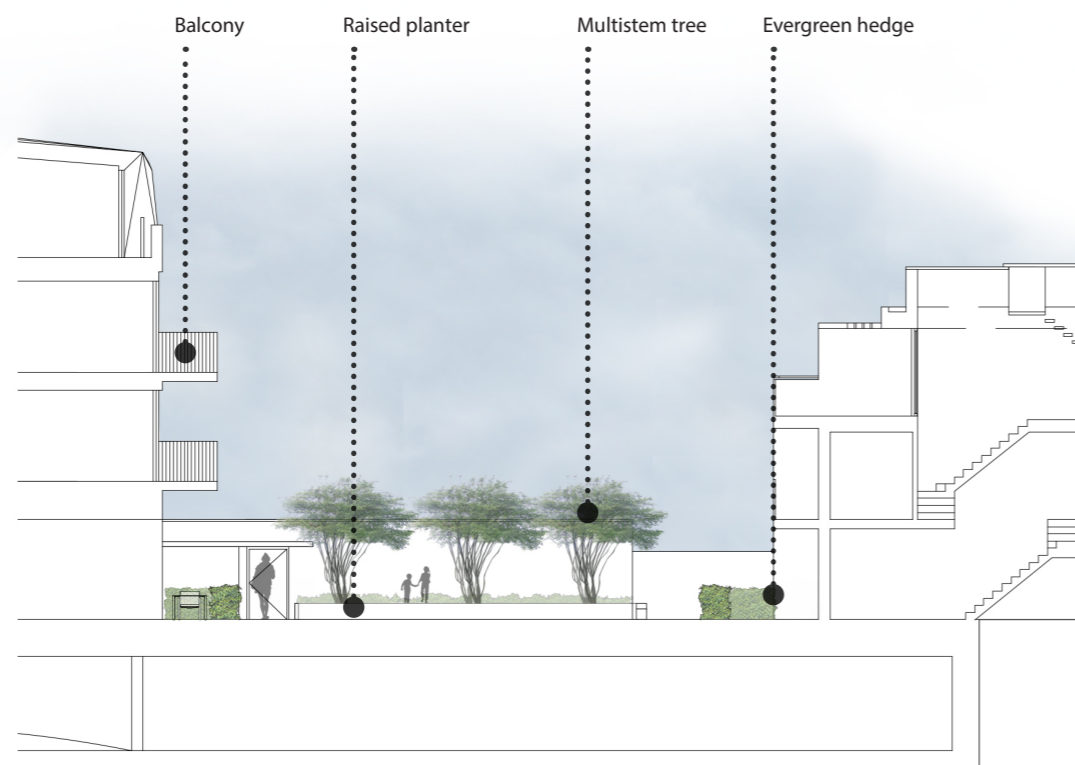
Illustrative masterplan



Section AA

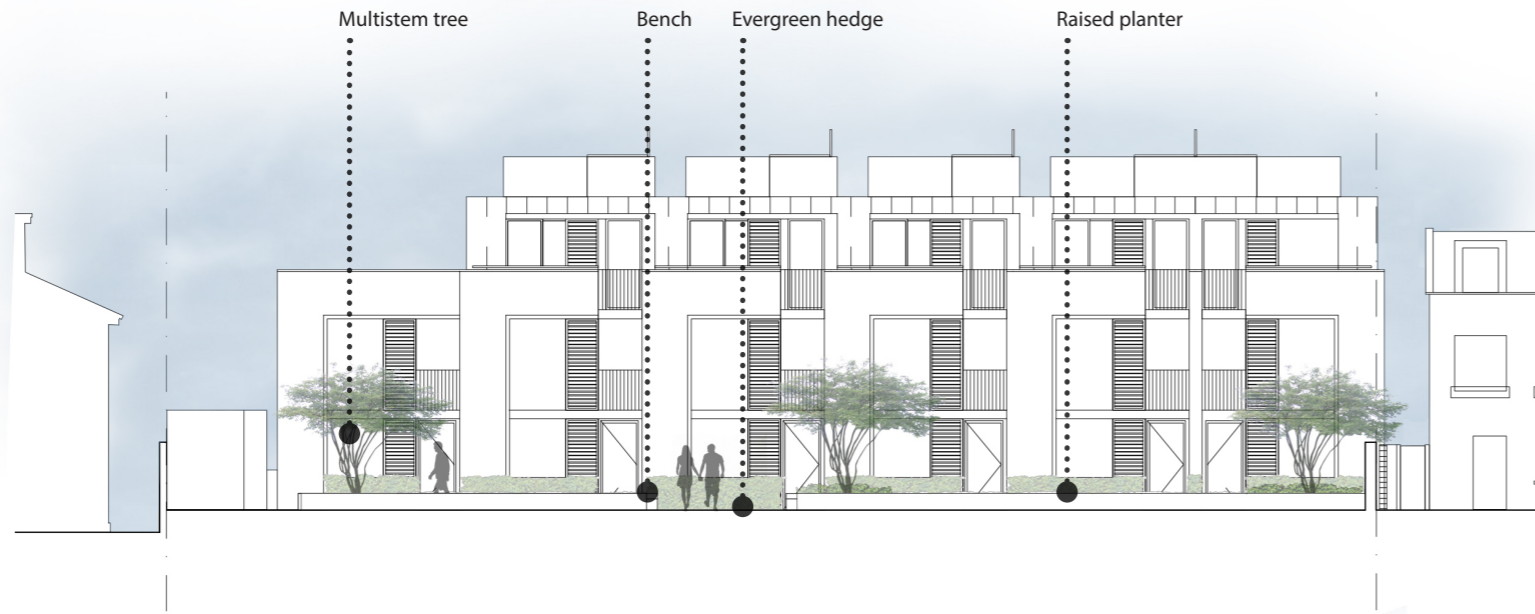


Section BB

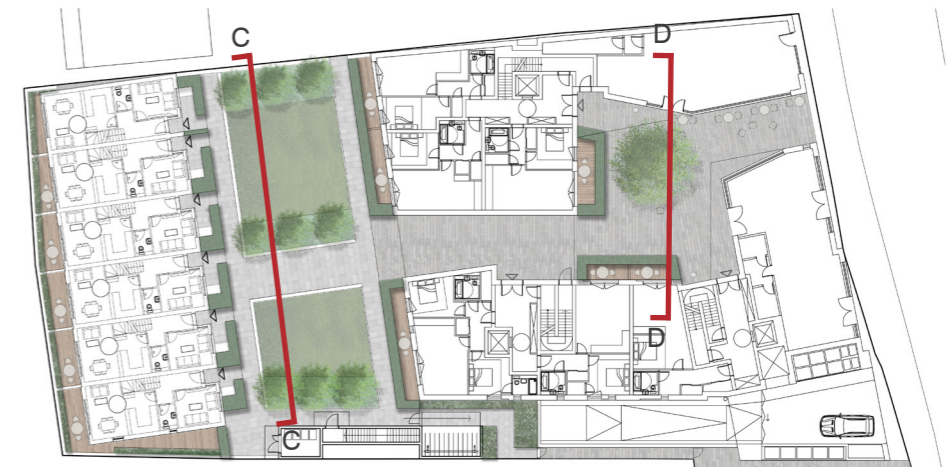


LANDSCAPE DESIGN

Section CC



Section DD



Hard materials

The hard landscape of the proposed scheme has been selected to be of appropriate quality and robustness having regard to the character of the development, the site and its local context.

The proposed materials tie the separate landscape elements together into a cohesive whole. The outer courtyard will be paved with the same granite slabs as used in the High Street.

The pathways of the inter courtyard will be paved with smaller size units with larger paving slabs being used to place an emphasis on the private entrances. This will support the more domestic character of the houses around this inner courtyard.

Composite timber decking will be used in private terraces to provide softness, durability and low maintenance.

Please refer to the drawing 561.D.01-Masterplan for more details.



- Granite slabs
- Granite setts
- Granite slabs
- Composite timber decking