

LANDSCAPE DESIGN

Hard materials



Granite seating edge with lawn to inner courtyard



Granite Slabs, to match high street paving



Granite setts



Integrated basement ventilation



Composite timber decking to private terraces



Granite slabs, tree pit detail



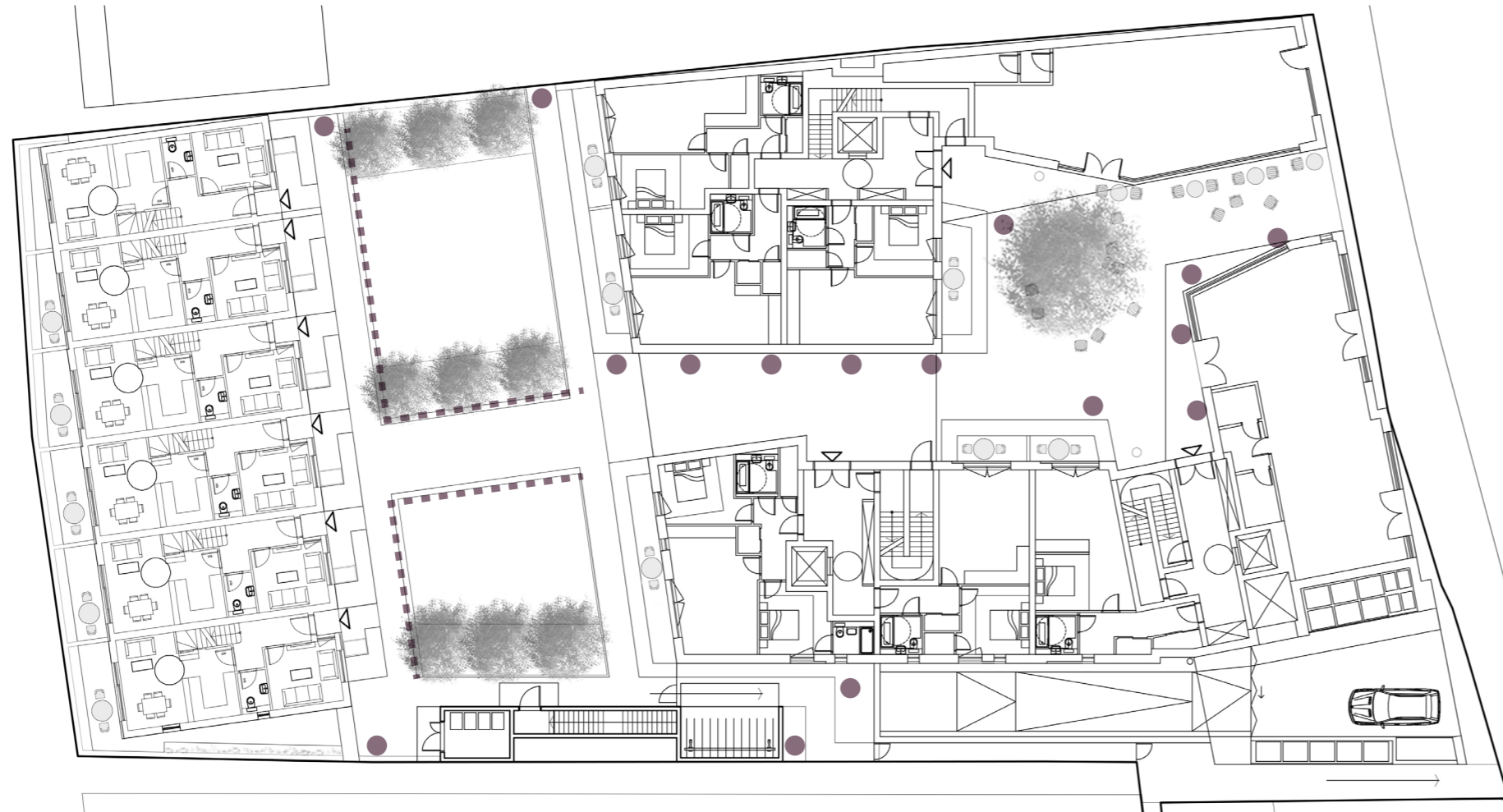
Raised planters to back gardens



Timber bin enclosure in the front garden of each house

Illustrative lighting plan

Lighting proposals for the inner and outer courtyards are designed to keep the external lighting at the ground level and provide only the light necessary for safe circulation during the hours of darkness.



Light fittings integrated into a raised planter

Light bollards



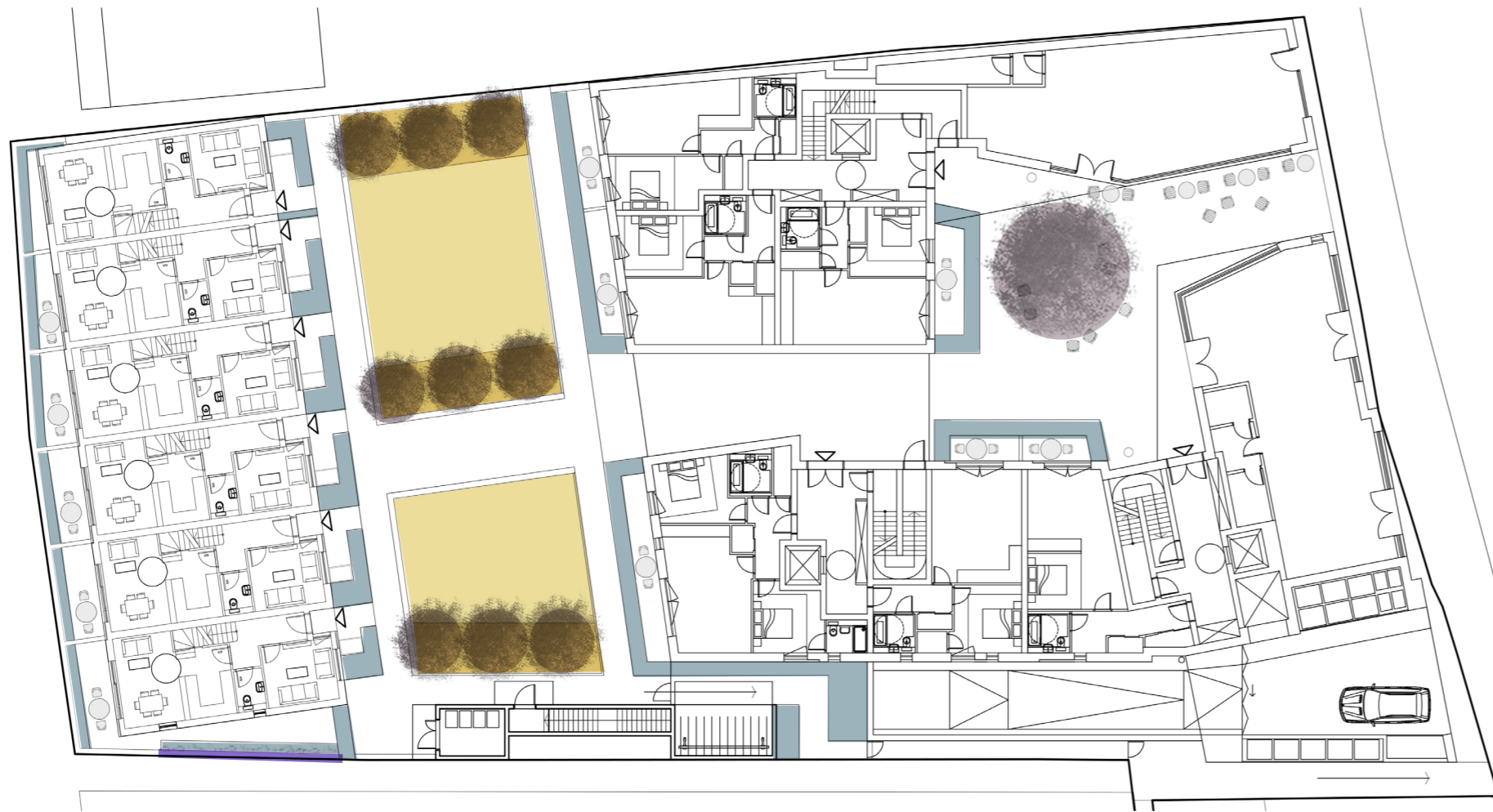
Light fittings integrated into a raised planter edge



Light bollards

LANDSCAPE DESIGN

Soft landscape



The suitability in the form and longer term growth and scale of the planting has been considered in relation to the spaces, the elevational treatment and the pedestrian circulation within the design.

The scheme includes a full basement and the design of this has been tailored to ensure that the depth of substrate needed is provided to allow the selected planting to survive and flourish.

Appropriate drainage and irrigation will be integrated in all planted areas and where necessary raised planters are incorporated to ensure that sufficient soil depth is provided and the specification of the trees and shrubs has been selected to reflect the growing conditions that they will be experience.

Ornamental shrub planting, clipped hedges, groundcover planting, climbers and turf are the predominant elements used within the soft landscaping of the courtyards.

Please refer to the drawing 561.D.03-Planting Plan for more details.



Multistem trees and lawn



View into a court beneath a building



Multistem tree ans shrub mix