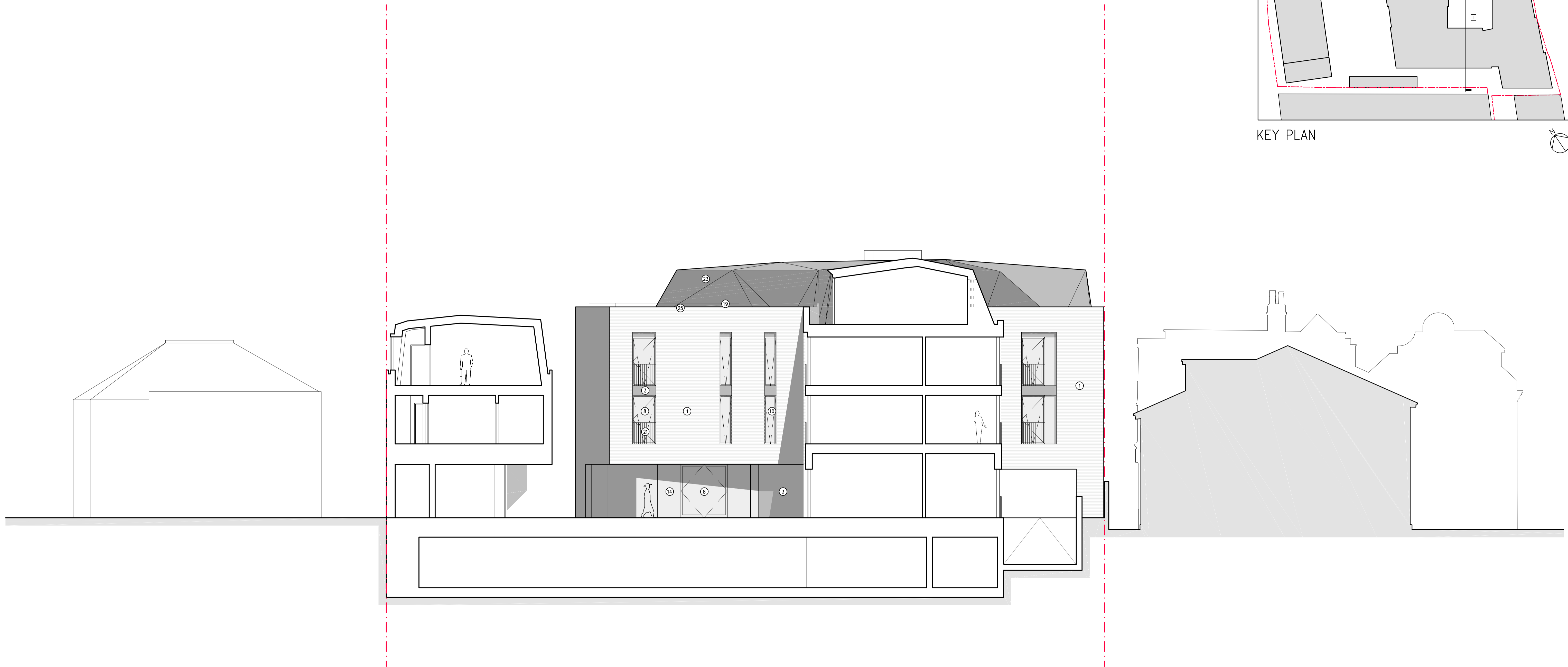


KEY PLAN



I PROPOSED SECTION I – COURTYARD ELEVATION
(1/20)P00 SCALE: 1:100 (A1)

Material description:

Walls:

- ① Yellow fair faced brick in stretcher bond. Final type / colour and mortar colour subject of submission and approval by LPA
- ② White render
- ③ Cladding - TECU Classic Copper
- ④ Cladding - TECU Classic Copper (roof level)
- ⑤ Fixed louvered cladding - TECU Classic Copper (town houses)
- ⑥ Fixed louvered cladding - TECU Classic Copper (roof level)
- ⑦ Shopfront signage zone and cladding - TECU Bronze

Doors & Windows:

- ⑧ Double glazed doors - Copper anodised aluminium frames
- ⑨ Double glazed doors - Copper anodised aluminium frames (roof level)
- ⑩ Double glazed tilt and turn windows - Copper anodised aluminium frames
- ⑪ Double glazed tilt and turn windows - Copper anodised aluminium (roof level)
- ⑫ Double glazed sliding doors - Copper anodised aluminium frame
- ⑬ Fixed frameless double glazed windows
- ⑭ Low ion toughened laminated shopfront glazing
- ⑮ Double glazed sliding rooflight lantern
- ⑯ Copper anodised roller shutter

Privacy Screens:

- ⑰ Sliding loured privacy screens - Copper anodised aluminium
- ⑱ Sliding loured privacy screens - Copper anodised aluminium (roof level)
- ⑲ Opaque toughened laminated glass privacy screens

Balustrading:

- ⑳ Toughened laminated glass balustrades
- ㉑ Recessed balconies with copper coloured metal balustrades
- ㉒ Juliet balconies with copper coloured metal balustrades
- ㉓ Balcony, copper coloured metal balustrades - Tecu Classic Copper cladding

Roofs:

- ㉔ TECU Classic Copper cladding with integrated photovoltaics
- ㉕ TECU Classic Copper cladding for town houses
- ㉖ TECU Classic Copper Flashing
- ㉗ Sedum green roof finish

Canopies and Soffits:

- ㉘ Canopies - with white rendered fascias and soffits with TECU Classic copper flashing and roofs
- ㉙ Soffit to recessed balconies - white render

Terraces:

- ㉚ Stone (Refer to landscape proposals)
- ㉛ Composite timber decking (Refer to landscape proposals)

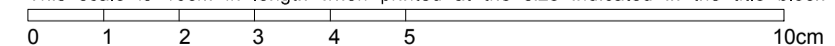
NOTES
 1 The Contractor must check and confirm all dimensions
 2 All discrepancies must be reported and resolved by the Architect before works commence
 3 This drawing is not to be scaled
 4 All work and materials to be in accordance with current applicable Statutory Legislation and to comply with all relevant Codes of Practice and British Standards

Copyright Rolfe Judd Ltd

Key Plan

Scale

This scale is 10cm in length when printed at the size indicated in the title block



North Point

Rev continued

Date

Revision

- Preliminary Drawing Issue
- A Preliminary Drawing Issue
- B Preliminary Issue
- P1 Planning Issue

Date

- 30/06/17
- 21/07/17
- 03/08/17
- 31/08/17

Client

Greatplanet Limited

Project
 63 - 71 High Street
 Hampton Hill

Drawing

Proposed Elevation Section I
 Courtyard West Elevation

Scale Date Status
 1:100 (A1) Jun 17 Planning

Job Number Drawing Number Revision
 5903 T(20) E09 P1

G:\6903\T_Series\T20\T20E09

Rolfe Judd

Architecture Planning Interiors

Old Church Court, Claylands Road, The Oval, London SW8 1NZ
 T 020 7556 1500
 www.rolfe-judd.co.uk