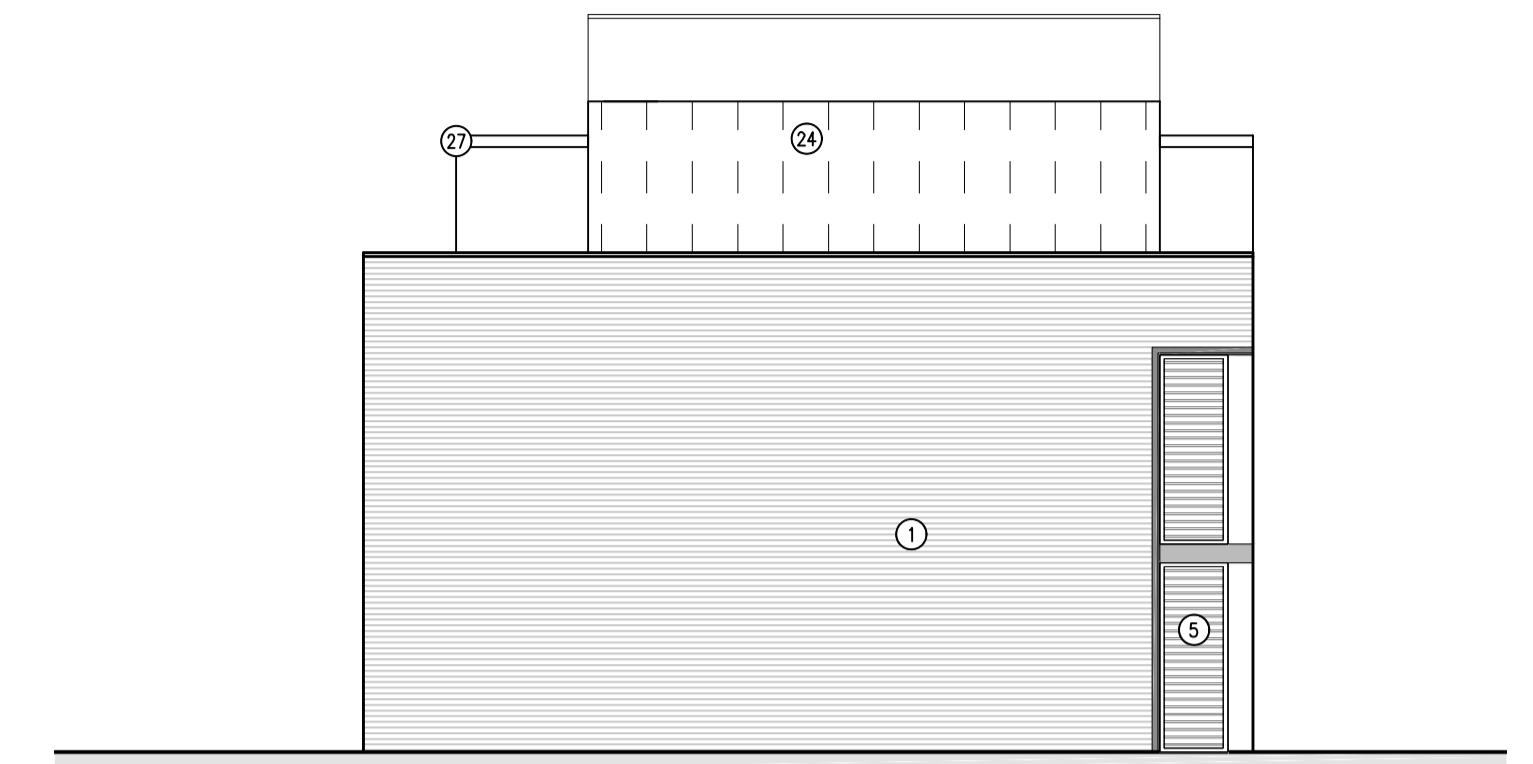


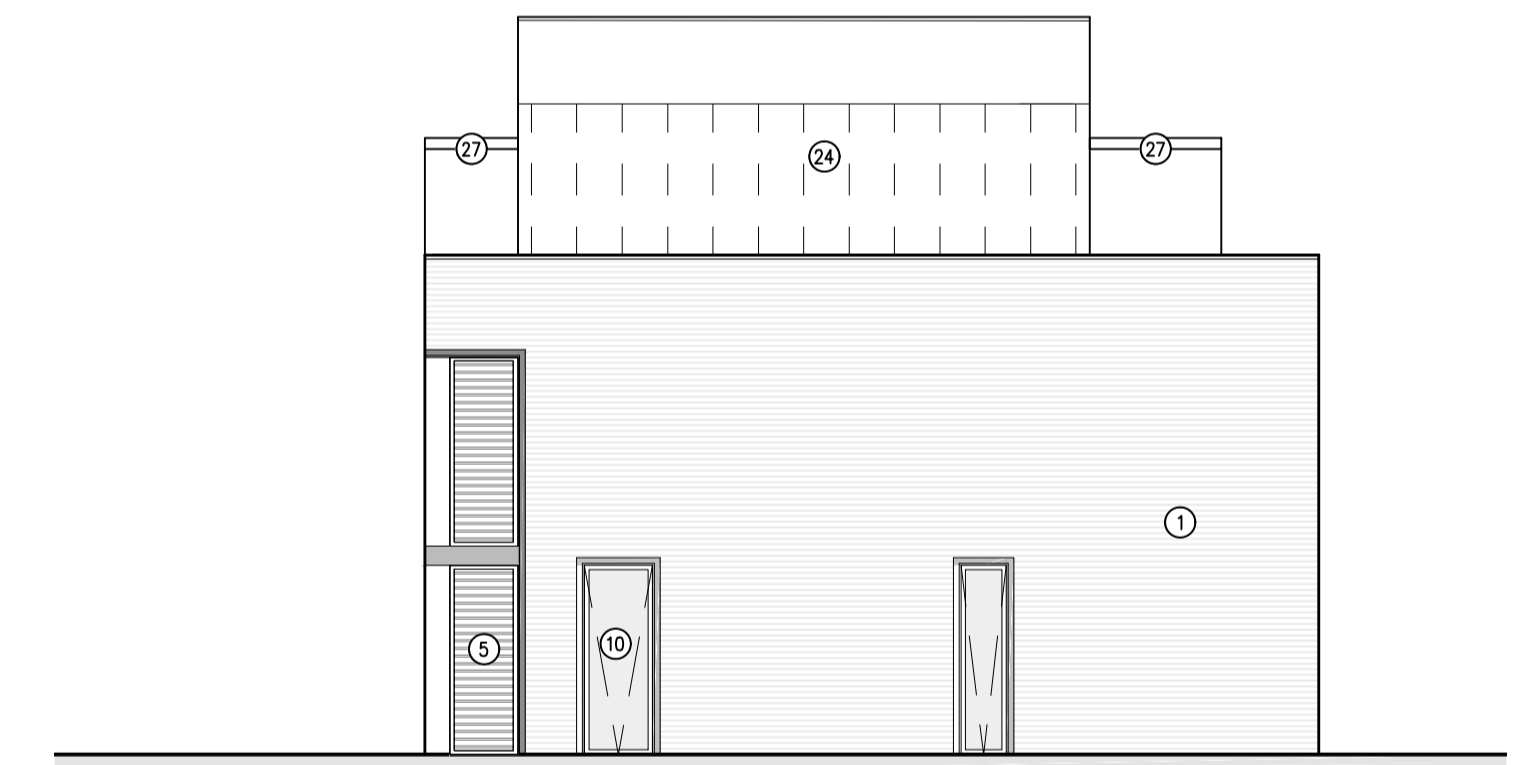
**N** PROPOSED TOWNHOUSE TYPE 2 – FRONT EAST ELEVATION N  
 T(20)P00 SCALE: 1:100 (A1)



**Q** PROPOSED TOWN HOUSE TYPE 2 – SIDENORTH ELEVATION Q  
 T(20)P00 SCALE: 1:100 (A1)



**P** PROPOSED TOWN HOUSE TYPE 2 – REAR WEST STREET SCENE P  
 T(20)P00 SCALE: 1:100 (A1)



**O** PROPOSED TOWN HOUSE TYPE 2 – SIDE SOUTH ELEVATION O  
 T(20)P00 SCALE: 1:100 (A1)

**Material description:**

**Walls:**

- ① Yellow fair faced brick in stretcher bond. Final type / colour and mortar colour subject of submission and approval by LPA
- ② White render
- ③ Cladding - TECU Classic Copper
- ④ Cladding - TECU Classic Copper (roof level)
- ⑤ Fixed louvered cladding - TECU Classic Copper (town houses)
- ⑥ Fixed louvered cladding - TECU Classic Copper (roof level)
- ⑦ Shopfront signage zone and cladding - TECU Bronze

**Doors & Windows:**

- ⑧ Double glazed doors - Copper anodised aluminium frames
- ⑨ Double glazed doors - Copper anodised aluminium frames (roof level)
- ⑩ Double glazed tilt and turn windows - Copper anodised aluminium frames
- ⑪ Double glazed tilt and turn windows - Copper anodised aluminium (roof level)
- ⑫ Double glazed sliding doors - Copper anodised aluminium frame
- ⑬ Fixed frameless double glazed windows
- ⑭ Low ion toughened laminated shopfront glazing
- ⑮ Double glazed sliding rooflight lantern
- ⑯ Copper anodised roller shutter

**Privacy Screens:**

- ⑰ Sliding loured privacy screens - Copper anodised aluminium
- ⑱ Sliding loured privacy screens - Copper anodised aluminium (roof level)
- ⑲ Opaque toughened laminated glass privacy screens

**Balustrading:**

- ⑳ Toughened laminated glass balustrades
- ㉑ Recessed balconies with copper coloured metal balustrades
- ㉒ Juliet balconies with copper coloured metal balustrades
- ㉓ Balcony, copper coloured metal balustrades - Tecu Classic Copper cladding

**Roofs:**

- ㉔ TECU Classic Copper cladding with integrated photovoltaics
- ㉕ TECU Classic Copper cladding for town houses
- ㉖ TECU Classic Copper Flashing
- ㉗ Sedum green roof finish

**Canopies and Soffits:**

- ㉘ Canopies - with white rendered fascias and soffits with TECU Classic copper flashing and roofs
- ㉙ Soffit to recessed balconies - white render

**Terraces:**

- ㉚ Stone ( Refer to landscape proposals)
- ㉛ Composite timber decking ( Refer to landscape proposals)

**NOTES**  
 Copyright Rolfe Judd Ltd  
 1 The Contractor must check and confirm all dimensions  
 2 All discrepancies must be reported and resolved by the Architect before works commence  
 3 This drawing is not to be scaled  
 4 All work and materials to be in accordance with current applicable Statutory Legislation and to comply with all relevant Codes of Practice and British Standards

Key Plan

Scale

This scale is 10cm in length when printed at the size indicated in the title block



North Point

Rev continued

Date

Revision	Date
- Preliminary Drawing Issue	30/06/17
A Preliminary Drawing Issue	21/07/17
B Preliminary Issue	03/08/17
P1 Planning Issue	31/08/17

Date

Client  
**Greatplanet Limited**

Project  
**63 - 71 High Street  
 Hampton Hill**

Drawing  
**Proposed Town House Elevations**

Scale	Date	Status
1:100 (A1)	Jun 17	Planning
Job Number	Drawing Number	Revision
<b>5903</b>	<b>T(20) E10</b>	<b>P1</b>

G:\6903\T\_Series\T20\T20E10

**Rolfe Judd**

Architecture Planning Interiors

Old Church Court, Claylands Road, The Oval, London SW8 1NZ

T 020 7556 1500

www.rolfe-judd.co.uk