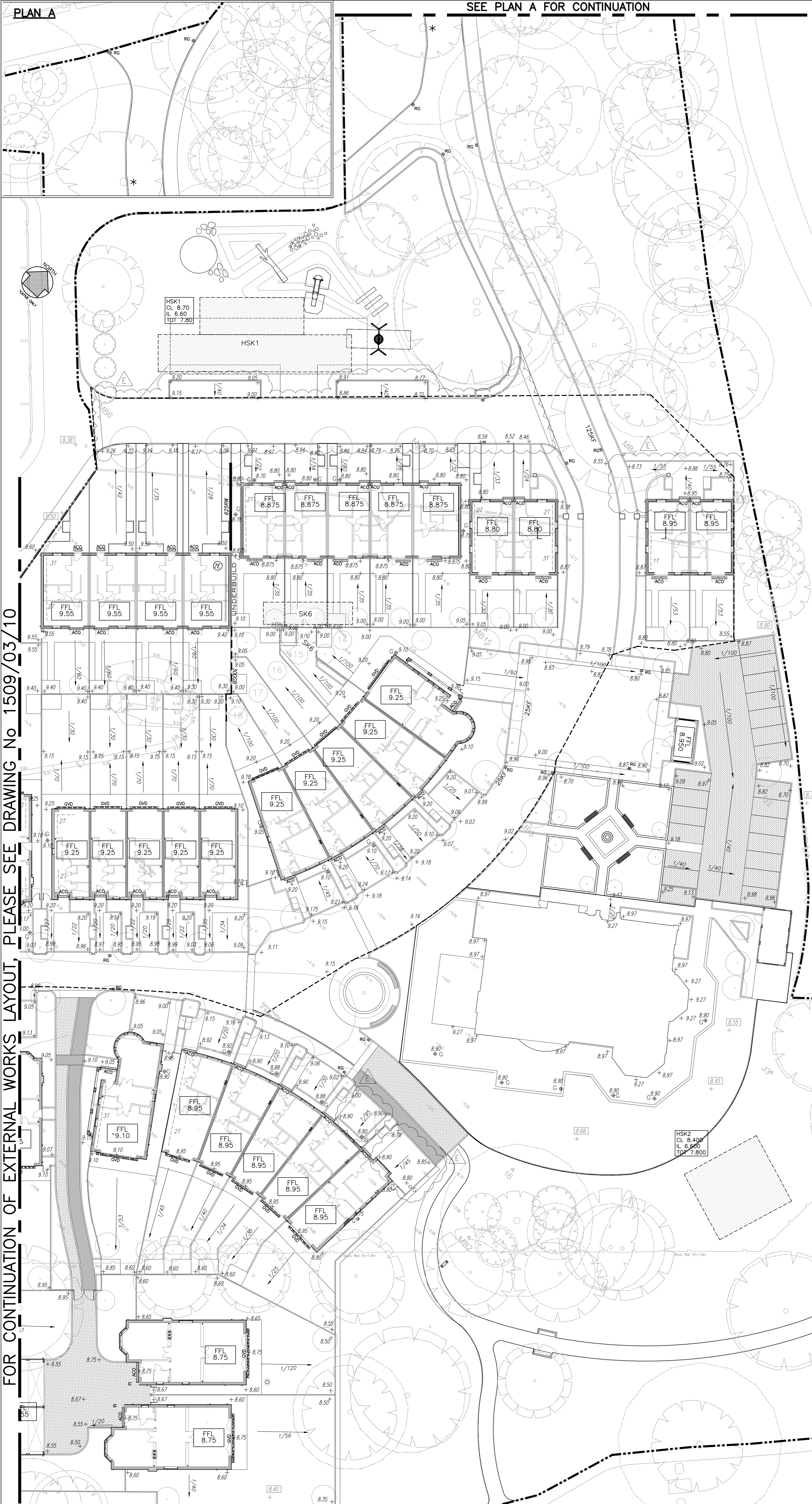


GENERAL NOTES
1. THIS DRAWING IS TO BE READ IN CONJUNCTION WITH THE ARCHITECTS, SPECIALISTS AND ENGINEERS DRAWINGS AND SPECIFICATIONS. ANY DISCREPANCIES ARE TO BE REPORTED TO THE ARCHITECT/ENGINEER IMMEDIATELY.

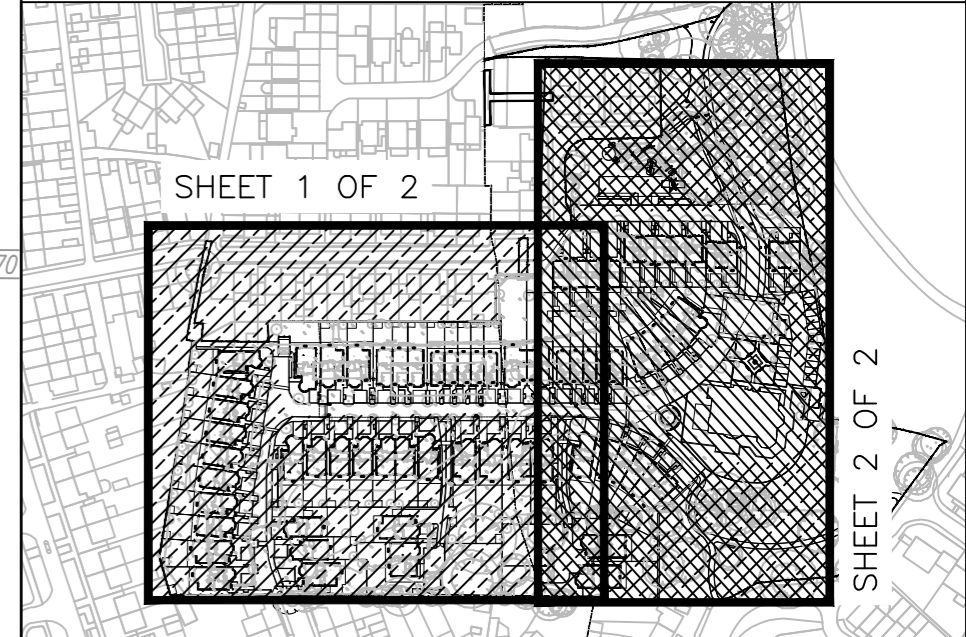
EXTERNAL WORKS

SITE LEVELS & FALLS	+ 00.000
EXISTING GROUND LEVELS	+ 8.45
RETAINING WALL & TEXT	1250RW
GRAVEL BOARD & TEXT	300GB
BOUNDARY WALL & TEXT	
FINISHED FLOOR LEVEL	FFL 00.000
EXPOSED BRICKWORK & No. OF COURSES	(25)
BRICK TANKING	- 4T
PLOT NO.S	1
STEPS	3 STEPS
BANKING MARKER	
SITE BOUNDARY	
1.8m SERVICE CORRIDOR	
PERMEABLE PAVING	
SLOT DRAIN	ACO DRAIN
GRAVEL DRAIN	GVD
ROAD GULLY	RG
KERB FACE HEIGHT(mm)	25KF

FOR CONTINUATION OF EXTERNAL WORKS LAYOUT, PLEASE SEE DRAWING No 1509/03/10



KEY PLAN



LATEST REVISIONS ARE 'TAGGED' WITH THIS INDICATOR. HOWEVER, ALL USERS OF THIS DRAWING MUST SATISFY THEMSELVES OF ALL REVISIONS TO ANY PREVIOUS ISSUES, BY COMPARISON OF THIS DRAWING AGAINST OTHER ISSUES, AS IT CANNOT BE GUARANTEED THAT EVERY ITEM OF REVISION HAS BEEN 'TAGGED'.

Rev	Date	Description	Drawn	Checked
G				
F				
E	28.07.17	PERMEABLE PAVING AREAS AMENDED	DM	SC
D	06.12.16	PHASE 2 BUILDING POSITIONS & ROAD ALIGNMENT AMENDED, PERMEABLE PAVING AREA UPDATED, EXTERNAL LEVELS UPDATED TO SUIT	DM	SC
C	29.09.16	IN ABEYANCE NOTE ADDED	DM	SC
B	27.05.16	EXTERNAL WORK REVISED FOR PHASE 1 (NOT CLOUDED FOR CLARITY)	RM	JCU
A	20.05.16	PLOTS 14-18 REVISED/RELEASED	RM	SC

LATCHMERE HOUSE

EXTERNAL WORKS LAYOUT
SHEET 2 OF 2

Client
BERKELEY HOMES

Architect
BROOKES ARCHITECTS

RLT ENGINEERING CONSULTANTS LTD
CIVIL AND STRUCTURAL CONSULTING ENGINEERS
2 ST PETER'S COURT
MIDDLEBROUGH
COLCHESTER, ESSEX, CO1 1WQ
T: 01206 768655
F: 01206 768656
E: email@rltengcon.co.uk

ISO 9001 REGISTERED FIRM