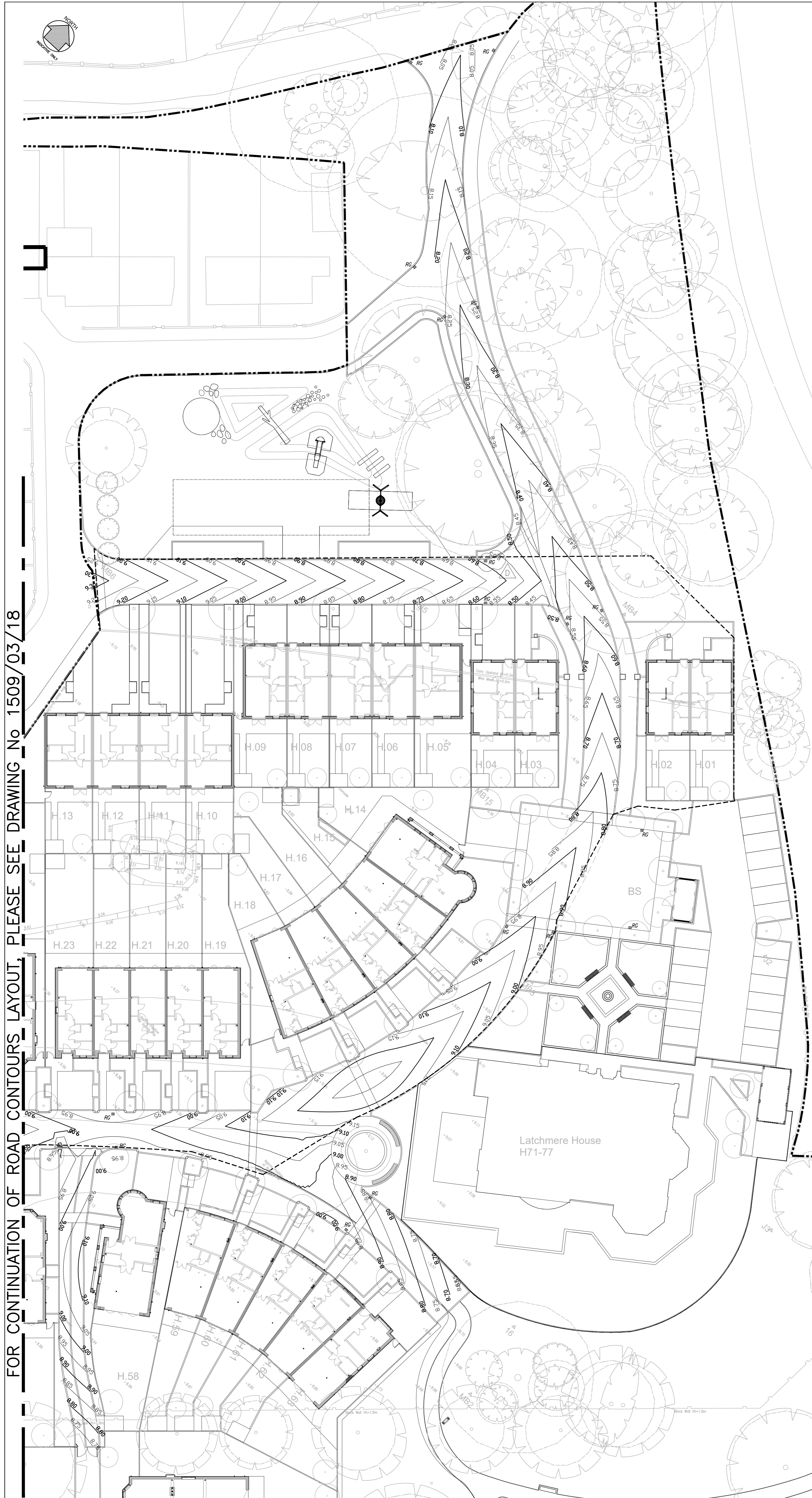


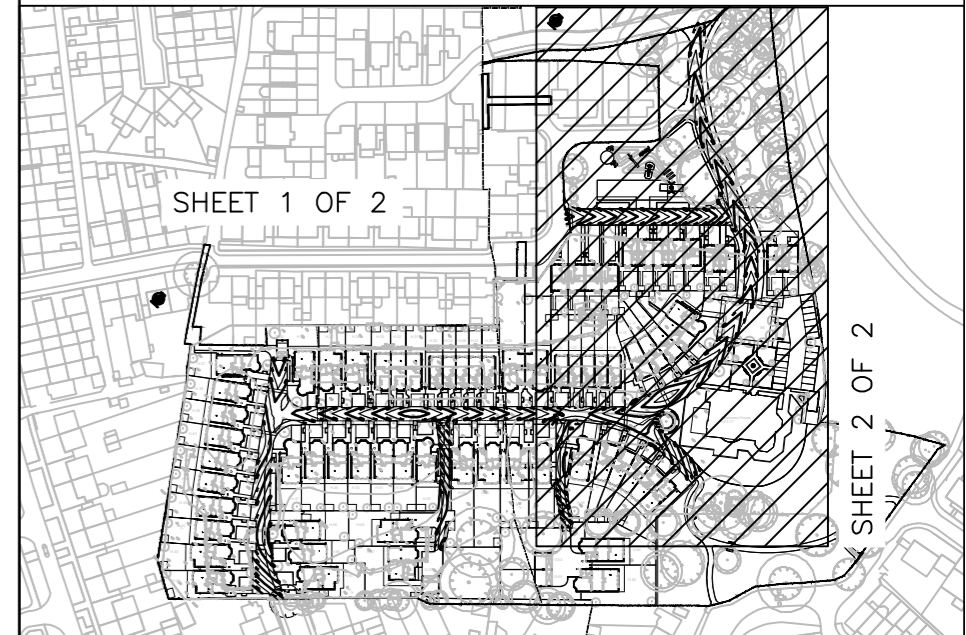
FOR CONTINUATION OF ROAD CONTOURS LAYOUT, PLEASE SEE DRAWING No 1509/03/18



DO NOT SCALE HARD COPIES OF THIS DRAWING OR INTERROGATE CAD VERSIONS. ONLY STATED DIMENSIONS AND COORDINATES ARE TO BE RELIED UPON. COPYRIGHT RESERVED

GENERAL NOTES
 1. THIS DRAWING IS TO BE READ IN CONJUNCTION WITH THE ARCHITECTS, SPECIALISTS AND ENGINEERS DRAWINGS AND SPECIFICATIONS. ANY DISCREPANCIES ARE TO BE REPORTED TO THE ARCHITECT/ENGINEER IMMEDIATELY.
 2. OUTFALL CAPACITY TO BE DETERMINED. OFF SITE WORKS MAY BE REQUIRED AS A RESULT.

KEY PLAN



REVISIONS
 LATEST REVISIONS ARE 'TAGGED' WITH THIS INDICATOR. HOWEVER, ALL USERS OF THIS DRAWING MUST SATISFY THEMSELVES OF ALL REVISIONS TO ANY PREVIOUS ISSUES, BY COMPARISON OF THIS DRAWING AGAINST OTHER ISSUES, AS IT CANNOT BE GUARANTEED THAT EVERY ITEM OF REVISION HAS BEEN 'TAGGED'.

| Rev | Date | Description | Drawn | Checked |
|-----|----------|-----------------------------|-------|---------|
| G | | | | |
| F | | | | |
| E | | | | |
| D | 28.07.17 | ROAD GULLY RELOCATED | DM | SC |
| C | 06.12.16 | IN ABEYANCE NOTE REMOVED | DM | SC |
| B | 29.09.16 | IN ABEYANCE NOTE ADDED | DM | SC |
| A | 27.05.16 | UPDATED TO ARCHITECT LAYOUT | RM | JCU |

LATCHMERE HOUSE
 Title
ROAD CONTOURS LAYOUT
SHEET 2 OF 2

Client
BERKELEY HOMES
(WEST LONDON) LIMITED

Architect
BROOKES ARCHITECTS

RLT

RLT ENGINEERING CONSULTANTS LTD
 CIVIL AND STRUCTURAL CONSULTING ENGINEERS
 2 ST PETER'S COURT
 MIDDLEBOROUGH
 COLCHESTER, ESSEX, CO1 1WD
 T: 01206 768655
 F: 01206 768656
 E: email@rltengcon.co.uk

ISO 9001
REGISTERED FIRM