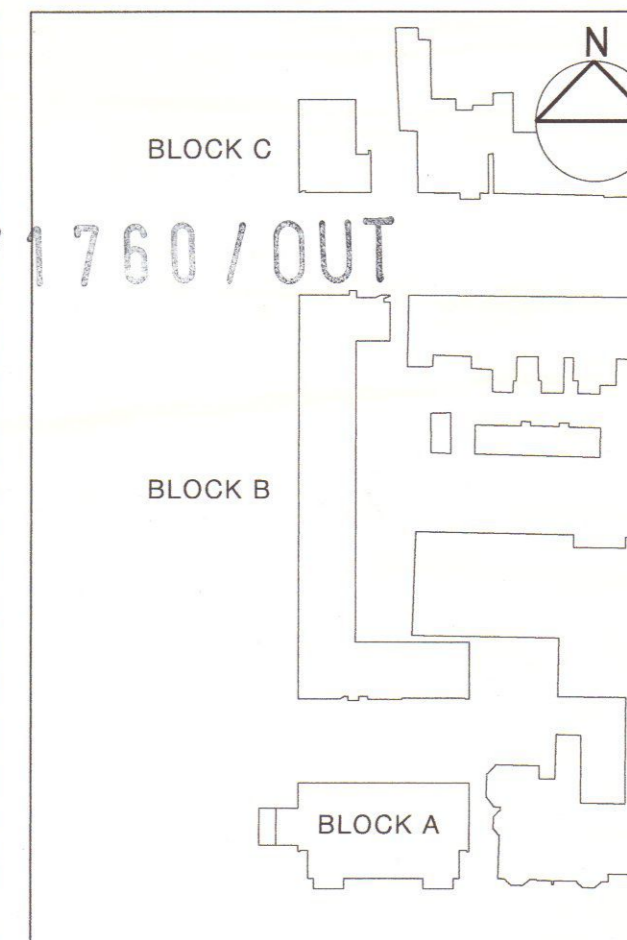


WEST PLAYING FIELDS



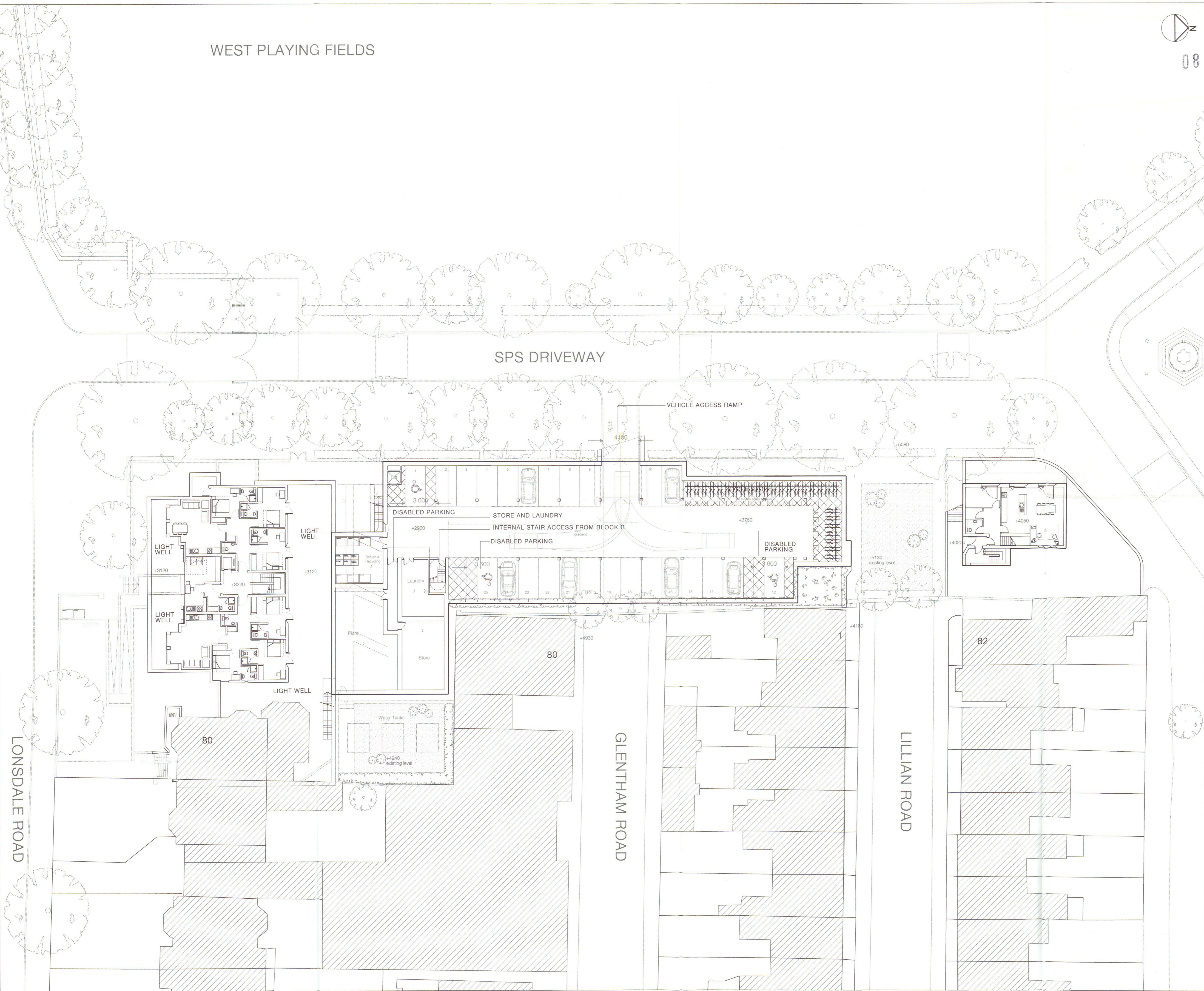
08/1760/OUT



Study Bedrooms	16
Studio Apartments	4
1 Bedroom Apartment	2
2 Bedroom Apartment	5
3 Bedroom Apartment	6
Car Parking Spaces	25
Secure Cycle Storage	54

SPS DRIVEWAY

VEHICLE ACCESS RAMP



RECEIVED
21 JUL 2009
PLANNING

PL8 18.07.08	PT	Block A light wells revised	PT
PL7 25.06.08	PT	Block A amendments	PT
PL6 08.05.08	PT	Block A amendments	PT
PL5 15.04.08	SS	Lightwell amended	PT
PL4 26.03.08	SS	Consultation Amendments	PT
PL3 11.03.08	SS	Block A+B+C amendments	PT
PL2 31.07.07	RNH	Block A and B amendments	PT
PL1 09.07.07	LB	Block A amendment - additional refuse added Block B amendments - car park columns relocated, ramp gradient added and relocation refuse and cycle store	PT
PL 11.05.07	LB	Planning submission	PT
P5 25.01.07	LB	Disable lift on block B	PT
P4 24.01.07	RNH	Block A amendments	PT
P3 07.12.06	RNH	Block A amendments & Block B ramp	PT
P2 30.01.06	JB	GENERAL REVISION	JB
P1 01.09.05	JB	GENERAL REVISION	JB

- revised in accordance with client's comments 18.08.05

Patel Taylor
53 Rawstone Street
London EC1V 7ND
Tel +44 (0) 20 7278 2323
Fax +44 (0) 20 7278 6942
pta@pateltaylor.co.uk

Architecture Landscape Urban Design

Client
ST. PAUL'S SCHOOL
Project
ST. PAUL'S SCHOOL RESIDENTIAL
Title
BASEMENT FLOOR PLAN

Job No 317A | Drwg No PSD 20.001 | Rev PL8
Scale 1:200 @ A1 | Date 18.08.05 | Sheet A1
Drawn ag | Checked pt

Do not scale. All dimensions to be checked on site and errors to be reported to architect. Illustrated material subject to copyright