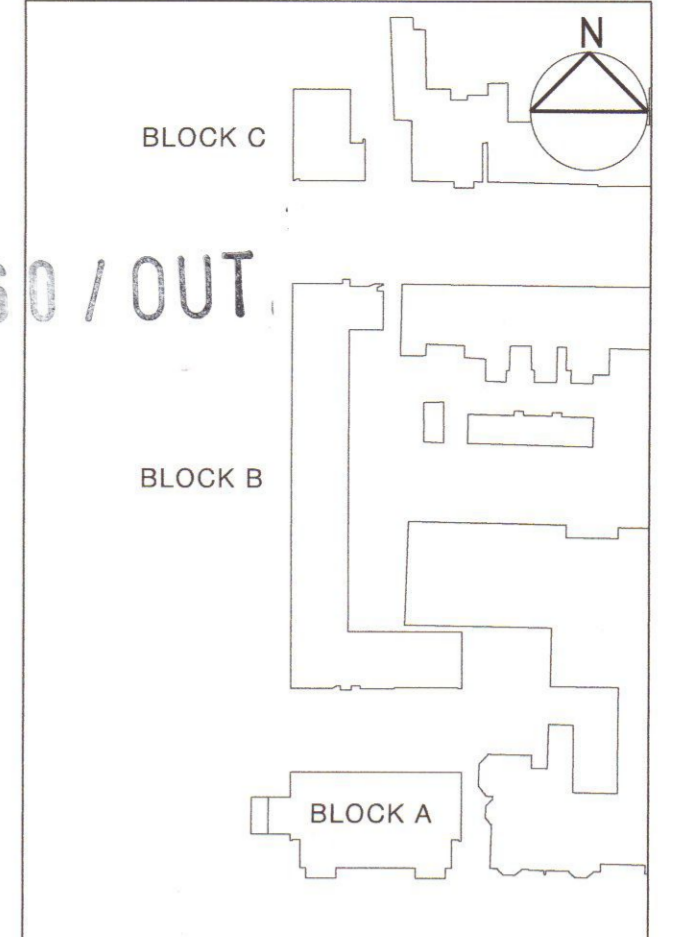
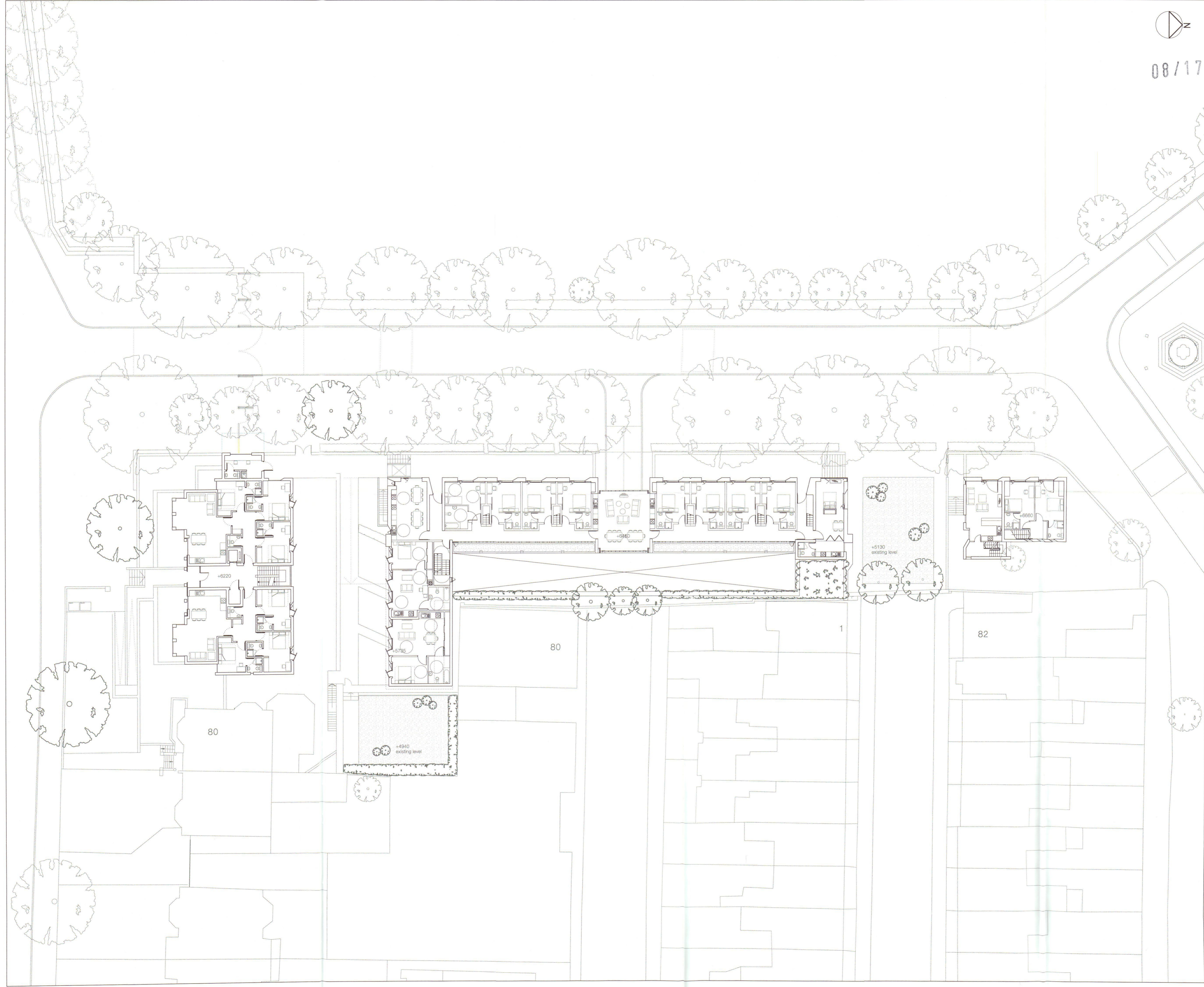


08/1760/OUT



Study Bedrooms	16
Studio Apartments	4
1 Bedroom Apartment	2
2 Bedroom Apartment	5
3 Bedroom Apartment	6
Car Parking Spaces	25
Secure Cycle Storage	54

Building Entrance



RECEIVED
21 JUL 2008
PLANNING

PL9 18.07.08	PT	Block A light wells revised	PT
PL8 23.06.08	PT	Turning Circles added	PT
PL7 08.05.08	PT	Block A amendments	PT
PL6 24.04.08	SS	Block C basement amended	PT
PL5 15.04.08	SS	Lightwell amended	PT
PL4 26.03.08	SS	Consultation Amendments	PT
PL3 05.03.08	SS	Block A+B+C amendments	PT
PL2 22.08.07	RNH	Block B amendments	PT
PL1 31.07.07	RNH	Block A and B amendments	PT
PL		Planning submission	PT
P6		Block A and block B amendments	PT
P4		Block A amendments	PT
P3		GENERAL REVISION	JB
P2		GENERAL REVISION	JB

- revised in accordance with client's comments 18.08.05

Patel Taylor
53 Rawstone Street
London EC1V 7WZ
Tel: +44 (0) 20 7278 2323
Fax: +44 (0) 20 7278 6342
pta@pateltaylor.co.uk

Architecture Landscape Urban Design

Client
ST. PAUL'S SCHOOL

Project
ST. PAUL'S SCHOOL RESIDENTIAL

Title
GROUND FLOOR PLAN

Job No 317A | Drwg No PSD 20.002 | Rev PL9

Scale 1:200 @ A1 | Date 16.08.05 | Sheet A1

Drawn jb | Checked pt

Do not scale. All dimensions to be checked on site and errors to be reported to architect. Illustrated material subject to copyright.