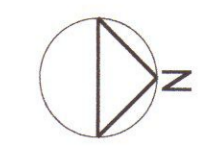
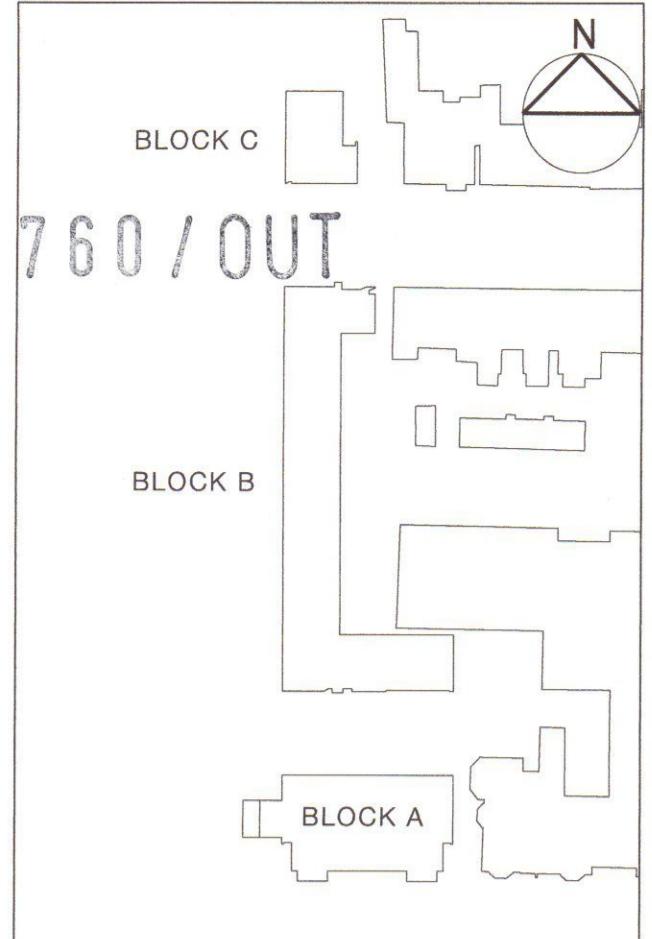


WEST PLAYING FIELDS

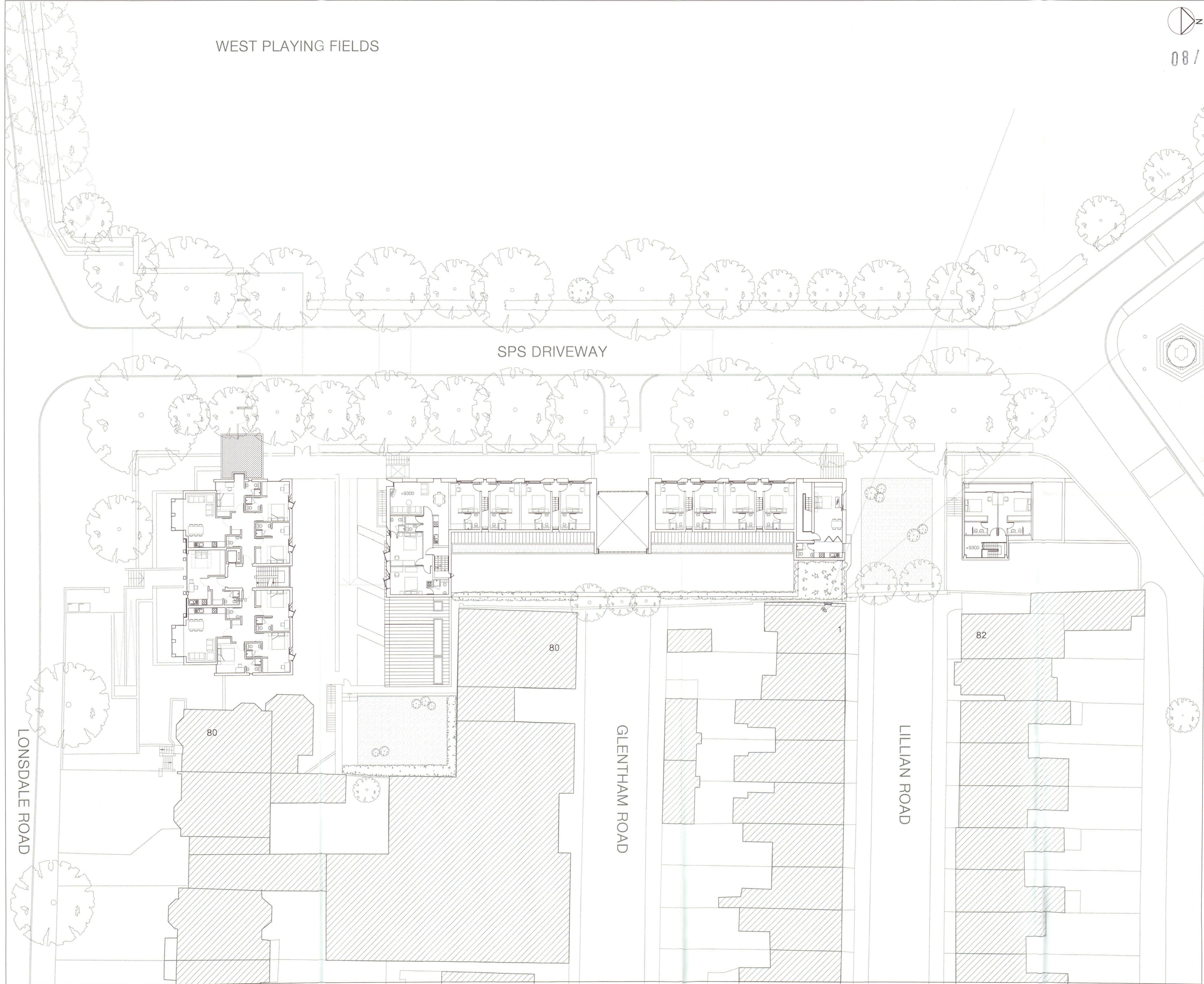


08/1760/OUT



Study Bedrooms	16
Studio Apartments	4
1 Bedroom Apartment	2
2 Bedroom Apartment	5
3 Bedroom Apartment	6
Car Parking Spaces	25
Secure Cycle Storage	54

SPS DRIVEWAY



RECEIVED  
21 JUL 2009  
PLANNING

PL7 18.07.08	PT	Block A light well revision	PT
PL6 08.05.08	PT	Block B amendments	PT
PL5 15.04.08	SS	Lightwell amendments	PT
PL4 26.03.08	SS	Consultation Amendments	PT
PL3 05.03.08	SS	Block A+B amendments	PT
PL2 22.08.07	RNH	Block B amendments	PT
PL1 31.07.07	RNH	Block A and block B amendments	PT
PL 11.05.07	LB	Planning submission	PT
P5 24.01.07	LB	Block A and block B amendments	PT
P4 07.12.06	RNH	Block A amendments	PT
P3 30.01.06	JB	GENERAL REVISION	JB
P2 01.09.05	JB	GENERAL REVISION	JB

- revised in accordance with client's comments 18.08.05

Patel Taylor  
53 Rawstone Street  
London EC1V 7NG  
Tel +44 (0) 20 7278 2323  
Fax +44 (0) 20 7278 9242  
pta@pateltaylor.co.uk

Architecture Landscape Urban Design  
Client  
ST. PAUL'S SCHOOL  
Project  
ST. PAUL'S SCHOOL RESIDENTIAL  
Title  
FIRST FLOOR PLAN

Job No 317A Drwg No PSD 20.003 Rev PL7  
Scale 1:200 Date 16.08.05 Sheet A1  
Drawn jb Checked pt

Do not scale. All dimensions to be checked on site and errors to be reported to architect. Illustrated material subject to copyright.

LONSDALE ROAD

GLENTHAM ROAD

LILLIAN ROAD