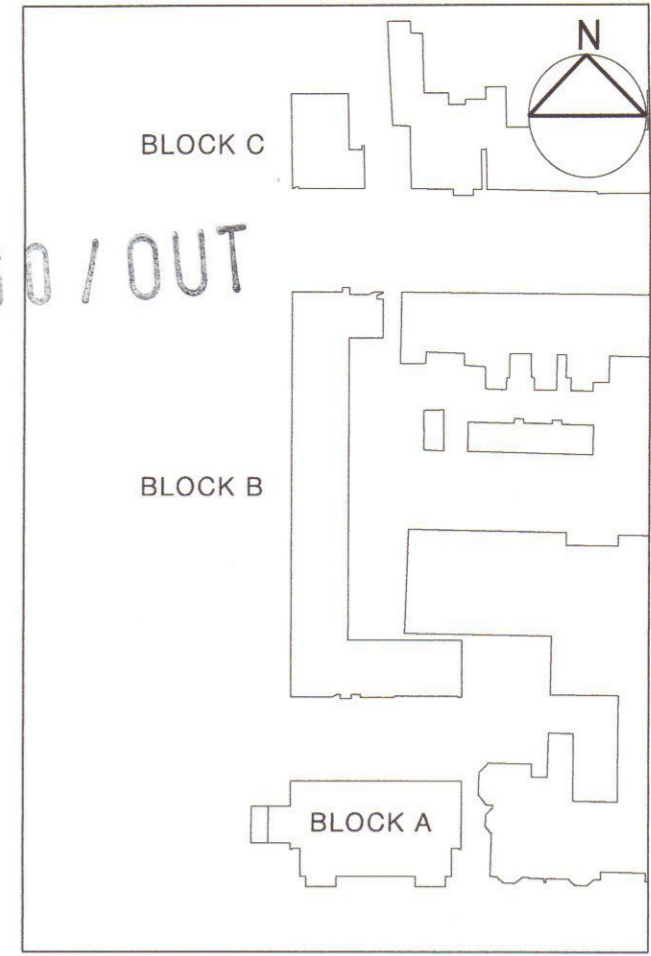


08/1760/OUT



Study Bedrooms	16
Studio Apartments	4
1 Bedroom Apartment	2
2 Bedroom Apartment	5
3 Bedroom Apartment	6
Car Parking Spaces	25
Secure Cycle Storage	54

RECEIVED  
21 JUL 2009  
PLANNING

PL7 18.07.08	SS	Block A light well revision	PT
PL6 07.05.08	SS	Block A revisions	PT
PL6 15.04.08	SS	Lightwell amendments	PT
PL4 26.03.08	SS	Consultation Amendments	PT
PL3 05.03.08	SS	Block A+B amendments	PT
PL2 22.08.07	RNH	Block B amendments	PT
PL1 31.07.07	RNH	Block A and block B amendments	PT
PL 11.05.07	LB	Planning submission	PT
P6 24.01.07	LB	Block A and block B amendments	PT
P4 07.12.06	RNH	Block A amendments	PT
P3 30.01.06	JB	GENERAL REVISION	JB
P2 01.09.05	JB	GENERAL REVISION	JB

- revised in accordance with client's comments 18.08.05

Patel Taylor  
53 Rawstone Street  
London EC1V 7JG  
Tel: +44 (0) 20 7278 2323  
Fax: +44 (0) 20 7278 6042  
pta@pateltaylor.co.uk

Architecture Landscape Urban Design  
Client  
ST. PAUL'S SCHOOL  
Project  
ST. PAUL'S SCHOOL RESIDENTIAL  
Title  
SECOND FLOOR PLAN

Job No	317A	Drwg No	PSD 20.004	Rev	PL7
Scale	1:200 @ A3	Date	16.08.05	Sheet	A1
Drawn	jb	Checked	pt		

Do not scale. All dimensions to be checked on site and errors to be reported to architect. Illustrated material subject to copyright.