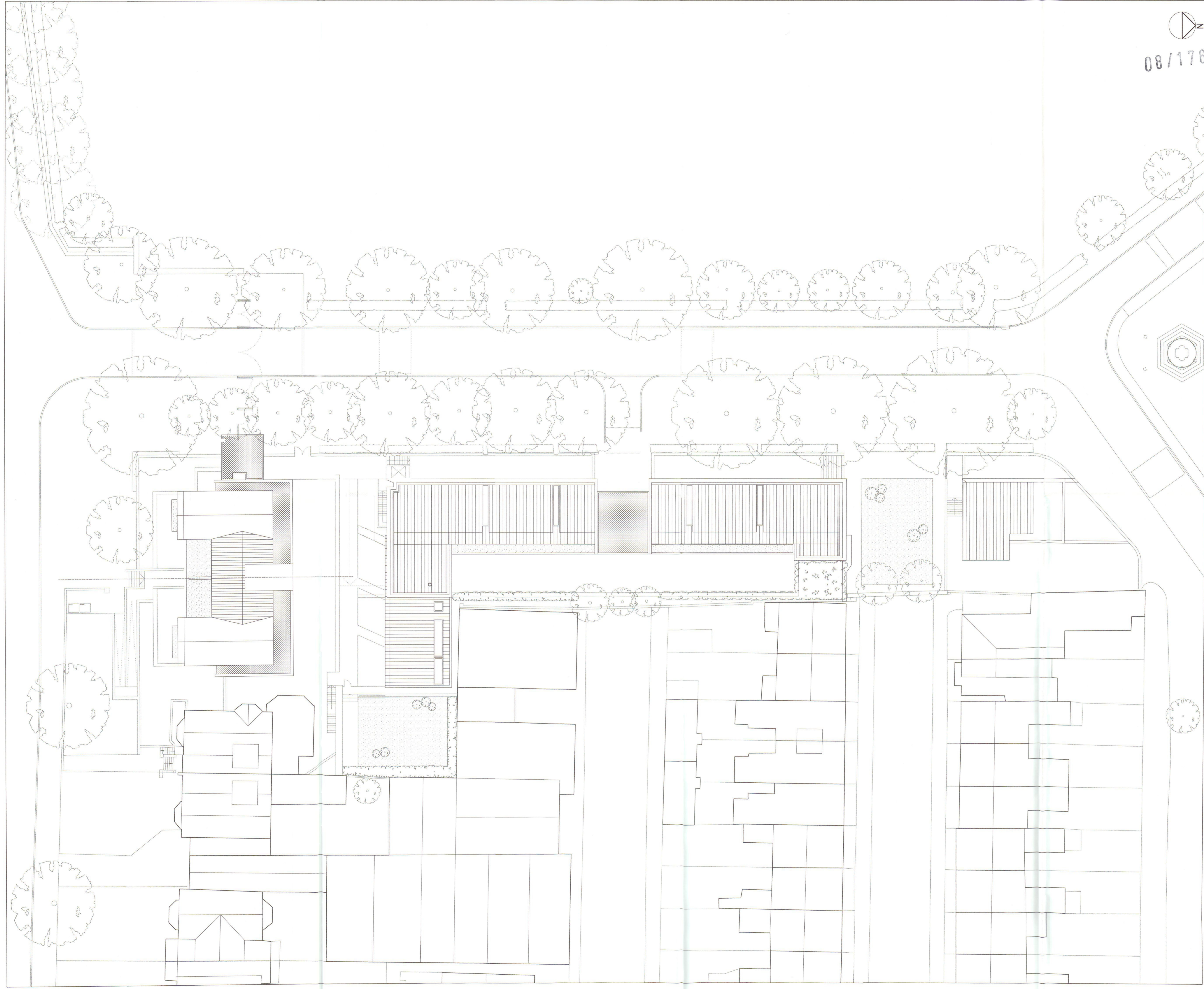


Study Bedrooms	16
Studio Apartments	4
1 Bedroom Apartment	2
2 Bedroom Apartment	5
3 Bedroom Apartment	6
Car Parking Spaces	25
Secure Cycle Storage	54



RECEIVED
21 JUL 2008
PLANNING

PL7 18.07.08	PT	Block A light well revision	PT
PL6 08.06.08	PT	Block A amendments	PT
PL5 15.04.08	SS	Lightwell amendments	PT
PL4 26.03.08	SS	Consultation Amendments	PT
PL3 12.02.08	SS	Block A amendments	PT
PL2 22.08.07	RNH	Block B amendments	PT
PL1 31.07.07	RNH	Block A and B amendments	PT
PL 11.05.07	LB	Planning submission	PT
P3 24.01.07	RNH	Block A and block B amendments	PT
P2 07.12.06	RNH	Block A amendments	PT

Patel Taylor
 53 Rawstone Street
 London EC1V 2ND
 Tel: +44 (0) 20 7278 2323
 Fax: +44 (0) 20 7278 0242
 pat@pateltaylor.co.uk

Architecture Landscape Urban Design
 Client
 ST. PAUL'S SCHOOL
 Project
 ST. PAUL'S SCHOOL RESIDENTIAL
 Title
 ROOF PLAN

Job No 317A Drwg No PSD 20.005 Rev PL7
 Scale 1:400 Date 16.08.05 Sheet A1
 Drawn jb Checked pt

Do not scale. All dimensions to be checked on site and errors to be reported to architect. Illustrated material subject to copyright.