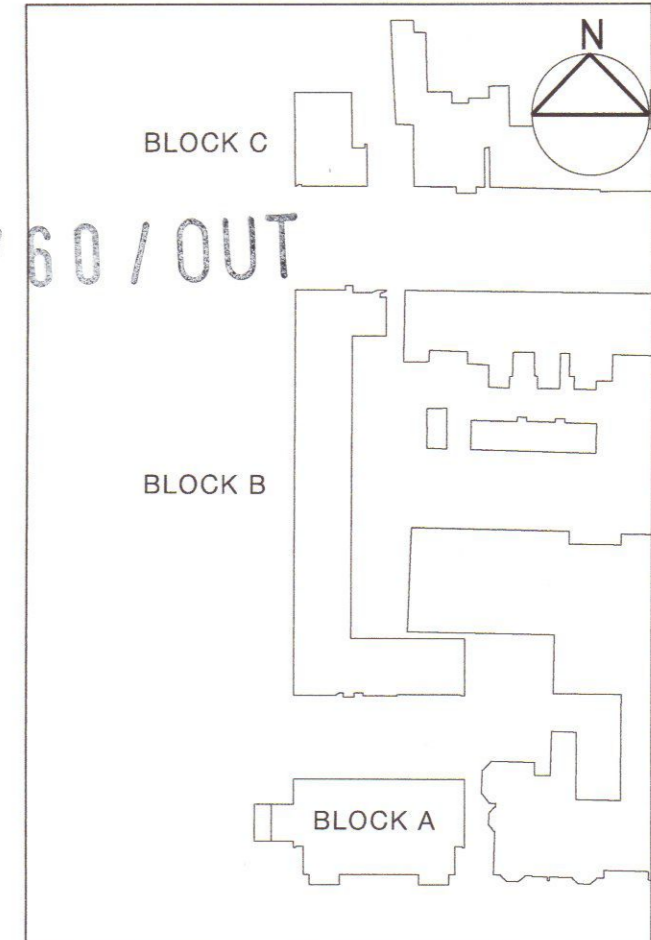




08/1760/OUT



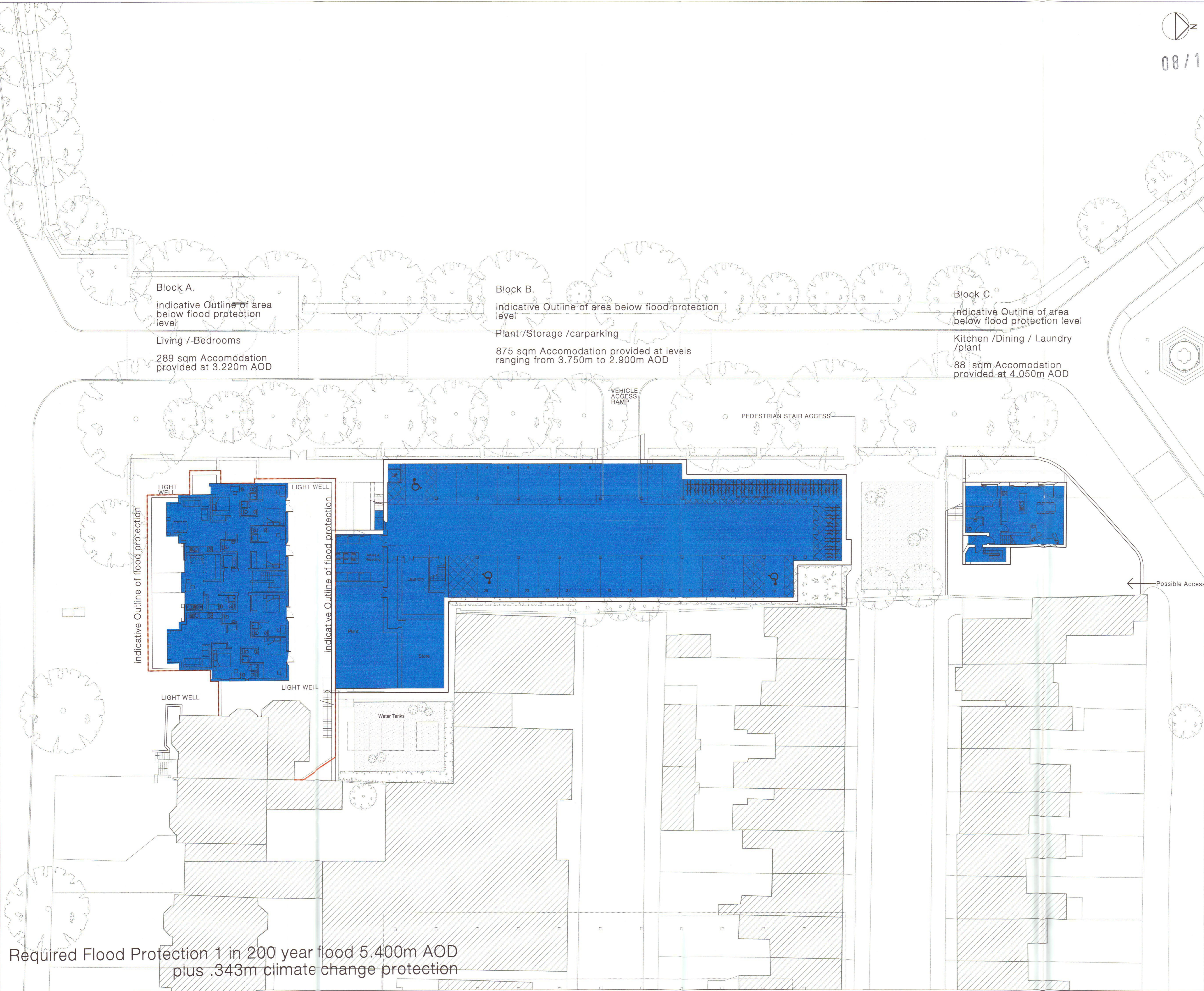
Block A.
Indicative Outline of area below flood protection level
Living / Bedrooms
289 sqm Accomodation provided at 3.220m AOD

Block B.
Indicative Outline of area below flood protection level
Plant / Storage / carparking
875 sqm Accomodation provided at levels ranging from 3.750m to 2.900m AOD

Block C.
Indicative Outline of area below flood protection level
Kitchen / Dining / Laundry / plant
88 sqm Accomodation provided at 4.050m AOD

Study Bedrooms	16
Studio Apartments	4
1 Bedroom Apartment	2
2 Bedroom Apartment	5
3 Bedroom Apartment	6
Car Parking Spaces	25
Secure Cycle Storage	54

Areas of Accommodation below flood defence datum
Indicative Outline of Flood Protection



Required Flood Protection 1 in 200 year flood 5.400m AOD plus .343m climate change protection

RECEIVED
21 JUL 2006
PLANNING

PL5 18.07.08	PT	Lightwell and flood protection line revision	PT
PL4 16.05.08	PT	Change area of blue	PT
PL3 15.04.08	SS	Lightwell amendments	PT
PL2 26.03.08	SS	Consultation Amendments	PT
PL1 06.03.08	SS	Block A+B+C amended	PT
PL 09.05.07	Ym	Planning Submission	PT
P1 07.12.06	RNH	Block A amendments	PT

Patel Taylor
53 Rawstone Street
London EC1V 7NS
Tel +44 (0) 20 7278 2323
Fax +44 (0) 20 7278 6842
pta@pateltaylor.co.uk

Architecture Landscape Urban Design
Client
ST. PAUL'S SCHOOL
Project
ST. PAUL'S SCHOOL RESIDENTIAL
Title
LOWER GROUND PLAN ACCOMMODATION BELOW FLOOD DEFENCE DATUM
Job No 317A Drwg No PSD 20.021 Rev PL5
Scale 1:200 @ A1 Date 28.06.06 Sheet A1
Drawn yy| Checked pt

Do not scale. All dimensions to be checked on site and errors to be reported to architect. Illustrated material subject to copyright