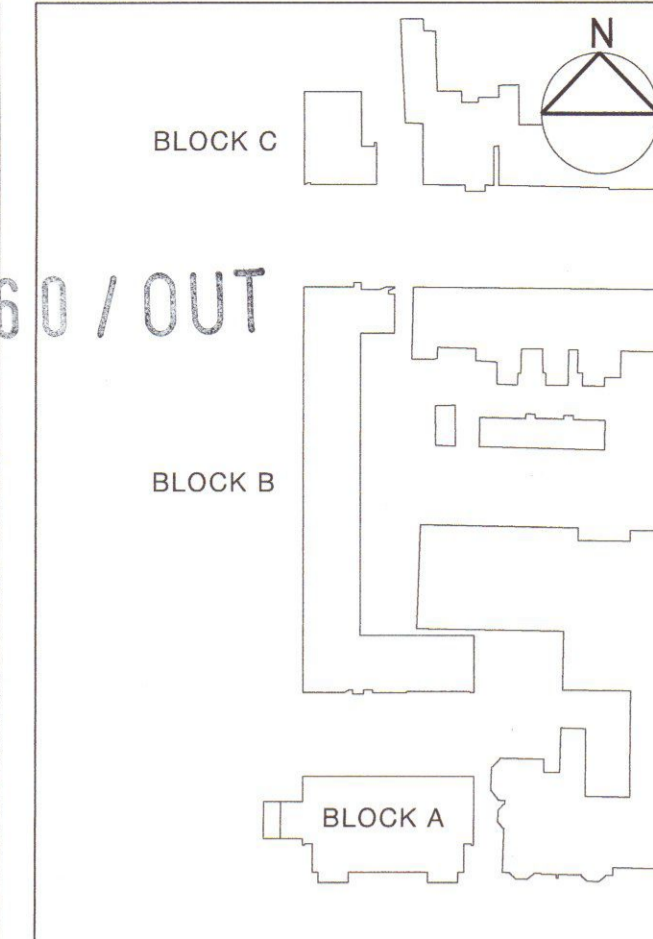


WEST PLAYING FIELDS



08/1760/OUT



Study Bedrooms	16
Studio Apartments	4
1 Bedroom Apartment	2
2 Bedroom Apartment	5
3 Bedroom Apartment	6
Car Parking Spaces	25
Secure Cycle Storage	54

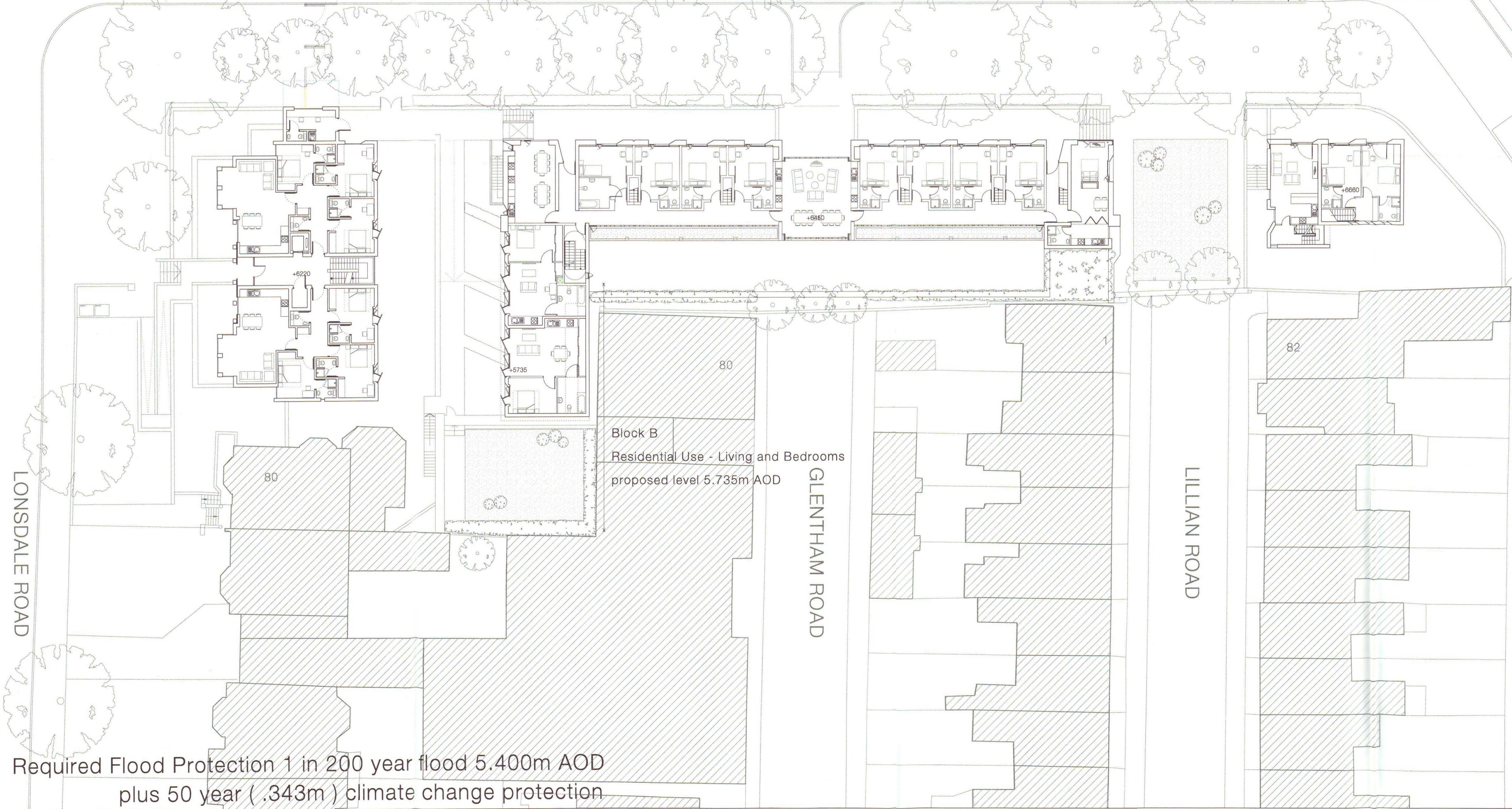
JOHN COLET SQUARE

Block A  
Residential Use - Living and Bedrooms  
proposed level 6.220m AOD

SPS DRIVEWAY

Block B  
Residential Use - Living and Bedrooms  
proposed level 6.450m AOD

Block C  
Residential Use - Living and Bedrooms  
Proposed level 6.660m AOD



LONSDALE ROAD

GLENTHAM ROAD

LILLIAN ROAD

Block B  
Residential Use - Living and Bedrooms  
proposed level 5.735m AOD

Required Flood Protection 1 in 200 year flood 5.400m AOD  
plus 50 year (.343m) climate change protection

RECEIVED  
21 JUL 2008  
PLANNING

PL4 18.07.08	SS	Lightwell Amendments	PT
PL3 15.04.08	SS	Lightwell Amendments	PT
PL2 26.03.08	SS	Consultation Amendments	PT
PL1 06.03.08	SS	Block A+B+C amended	PT
PL 09.05.07	Vm	Planning Submission	PT
P5 24.01.07	RNH	Block A and block B amendments	PT
P4 07.12.06	RNH	Block A amendments	PT
P3 05.06.06	Vm	Areas below flood defence datum	Vm
P2 01.09.05	JB	GENERAL REVISION	JB
- revised in accordance with client's comments 18.08.05			

Patel Taylor  
53 Hawstone Street  
London EC1V 7JG  
Tel: +44 (0) 20 7778 2323  
Fax: +44 (0) 20 7778 9242  
pta@pateltaylor.co.uk

Architecture	Landscape	Urban Design
Client	ST. PAUL'S SCHOOL	
Project	ST. PAUL'S SCHOOL RESIDENTIAL	
Title	GROUND FLOOR PLAN ACCOMMODATION BELOW FLOOD DEFENCE DATUM	
Job No	317A	Drwg No PSD 20.022 Rev PL4
Scale	1:200 @ A1 1:400 @ A3	Date 16.08.05 Sheet A1
Drawn	yyj	Checked pt

Do not scale. All dimensions to be checked on site and errors to be reported to architect. Illustrated material subject to copyright.